

# INDIO GRAND MARKETPLACE



COMING SOON

HIGH PROFILE RETAIL SHOPS & PADS AVAILABLE FRONTING ON HWY 111

# PROJECT HIGHLIGHTS

The transformation is underway—Haagen Company is redeveloping a former indoor mall into a vibrant, open-air shopping destination. Plans include a project footprint of approximately 40 acres. The planned mixed-use development includes an upscale market, value retail, residential, and hotel components.

## Key Highlights:

- Shops and pads available – 1,000 to 5,685 SF
- High visibility location on Hwy 111 with over 52,000 CPD
- Phase I of planned 40-acre mixed-use redevelopment strategically located along the HWY 111 corridor in Indio, CA coming soon
- Indio is the most populous city in The Valley and is projected to grow 35% by 2030
- Population exceeds 130,000 within a 10 minute drive and 200,000 within 15 minutes
- Less than 0.5 miles from College of the Desert campus with more than 4,000 students, with plans to expand to 8,000



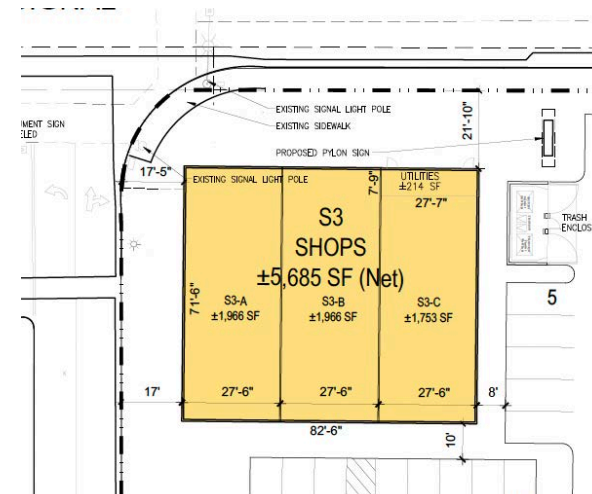
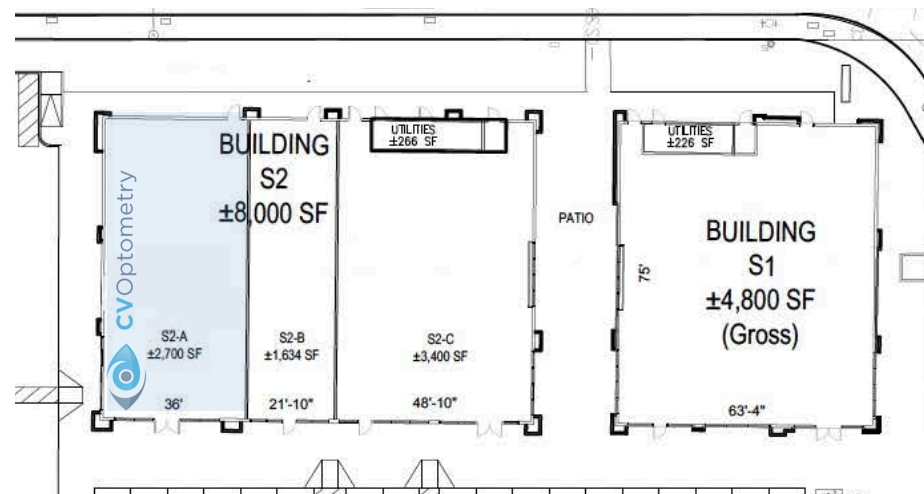
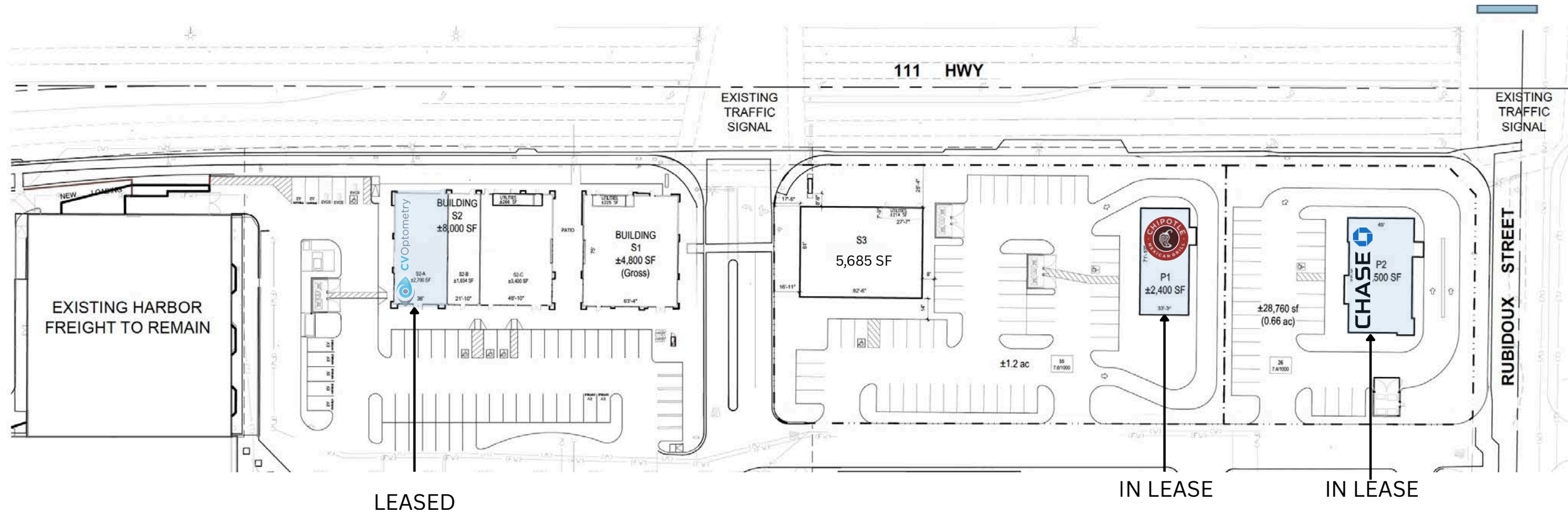


**PHASE I**

**PHASE II**

**PHASE I** - Coming Soon. Inline retail shops and pads fronting along Hwy. 111.

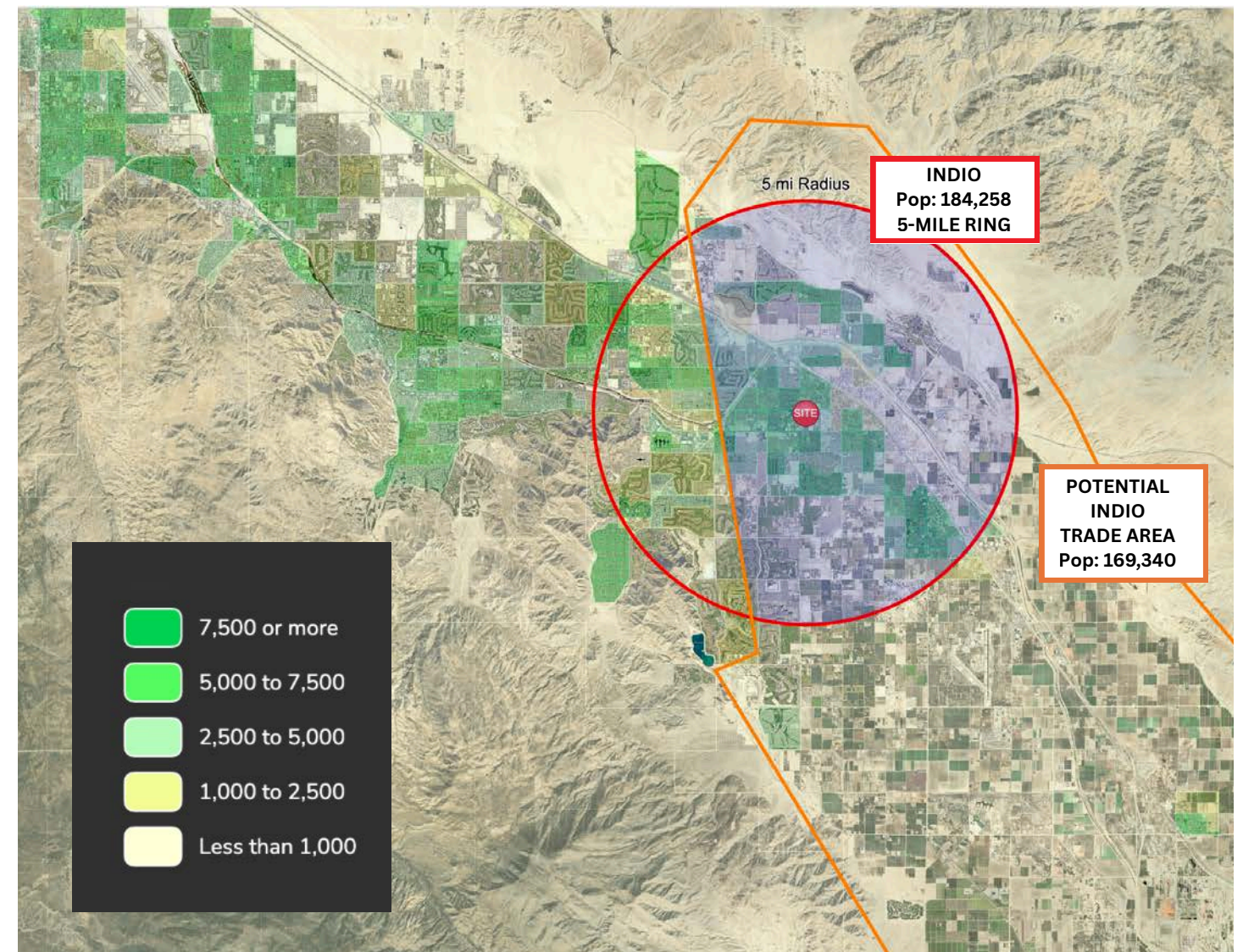
**PHASE II** - Indoor mall will be demolished. Existing anchor buildings to be renovated for a market, retail or entertainment.



**BUILDING S1: Up to 4,800 SF**  
**BUILDING S2: Up to 5,300 SF**  
**BUILDING S3: Up to 5,685 SF**

## GO WHERE THE PEOPLE ARE: POPULATION DENSITY WINS

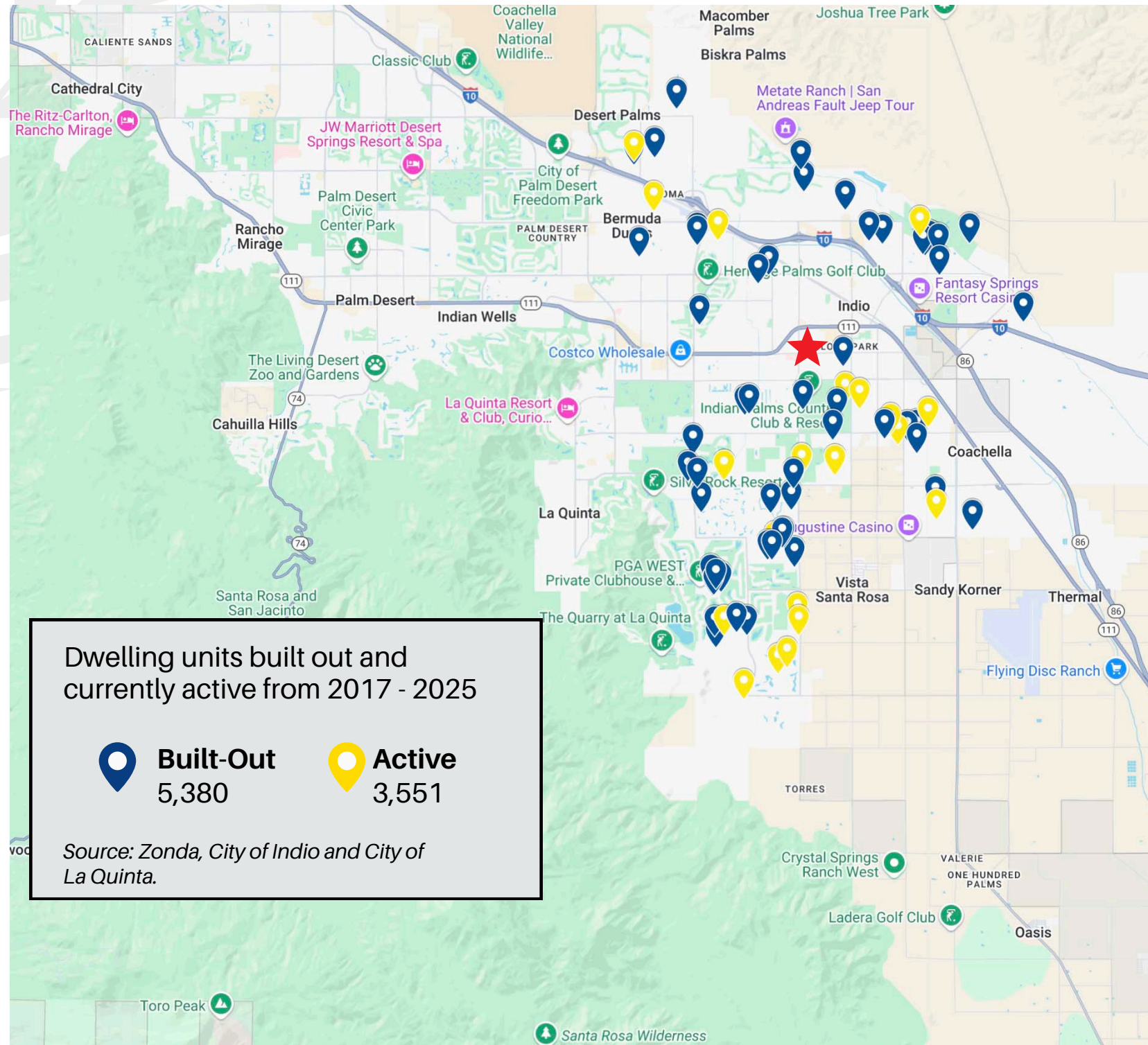
- **Indio Grand Marketplace (IGM)** has the most densely populated 5-mile trade area in the Coachella Valley — with **184,258 residents**.
- Nearly **84% of the potential trade area population lives south of I-10** - Right where IGM is located.
- IGM's trade area experiences a **seasonal population lift of 20-23%**.
- Average HH Income is **\$104,731** within a 3 mile radius.
- **Build where your customer already is.**

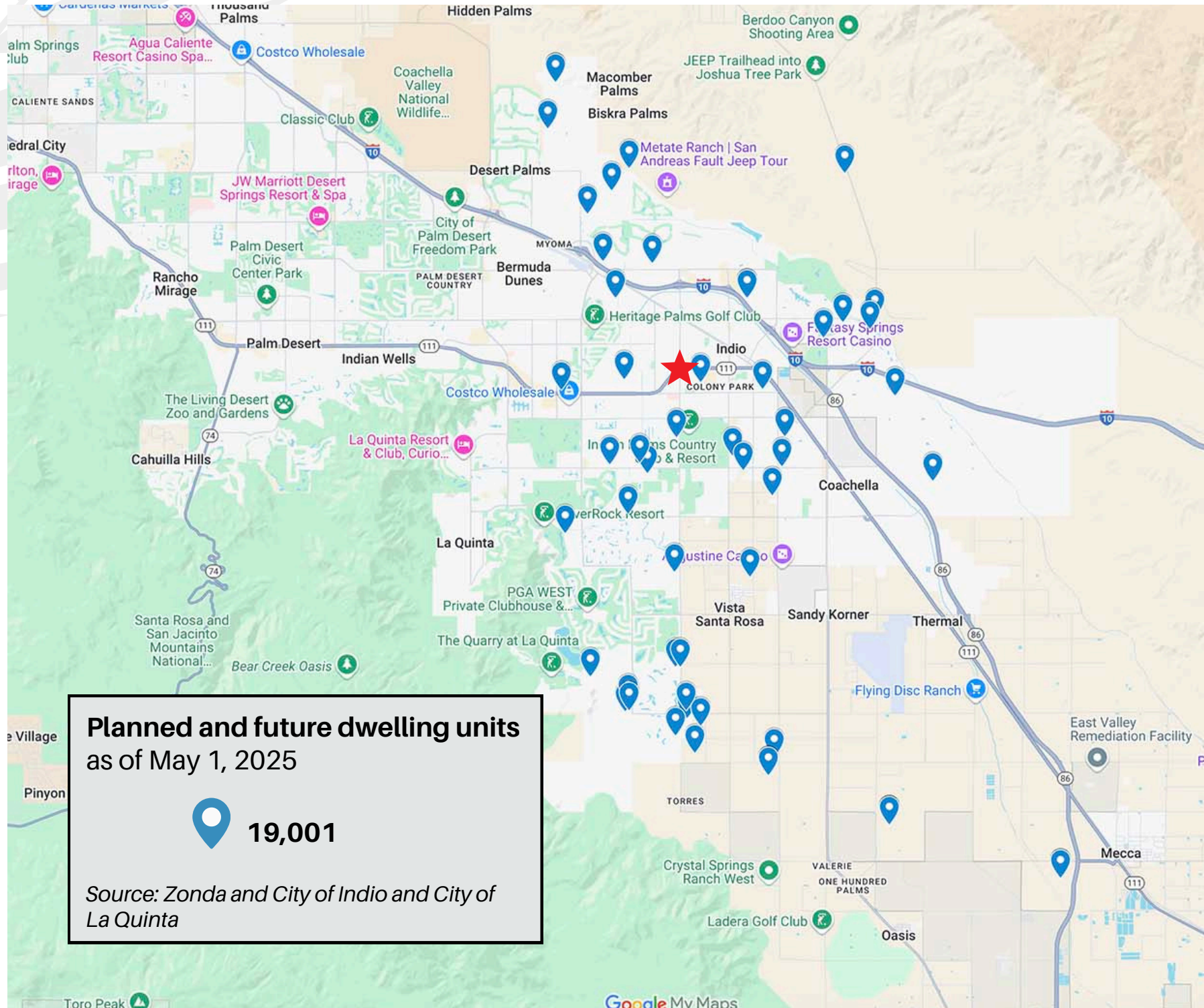


Population Density by block groups shown on aerial map in shades of green and yellow.

## Housing Growth and Population Trends Drive Long-Term Retail Demand

- **5,380 new dwelling units** have been built in the Indio trade area since 2017.
- **3,551 additional units** are currently under construction or in permitting.
- Combined, this activity reflects a strong, sustained demand for housing throughout the region.
- The City of Indio's population grew by over 10,000 residents from 2010 to 2020 (1.21% annual rate), and is projected to **increase to 96,000 by 2035**, up from 91,386 in 2024.
- New rooftops and steady population gains create a solid and growing customer base for national and regional retailers.



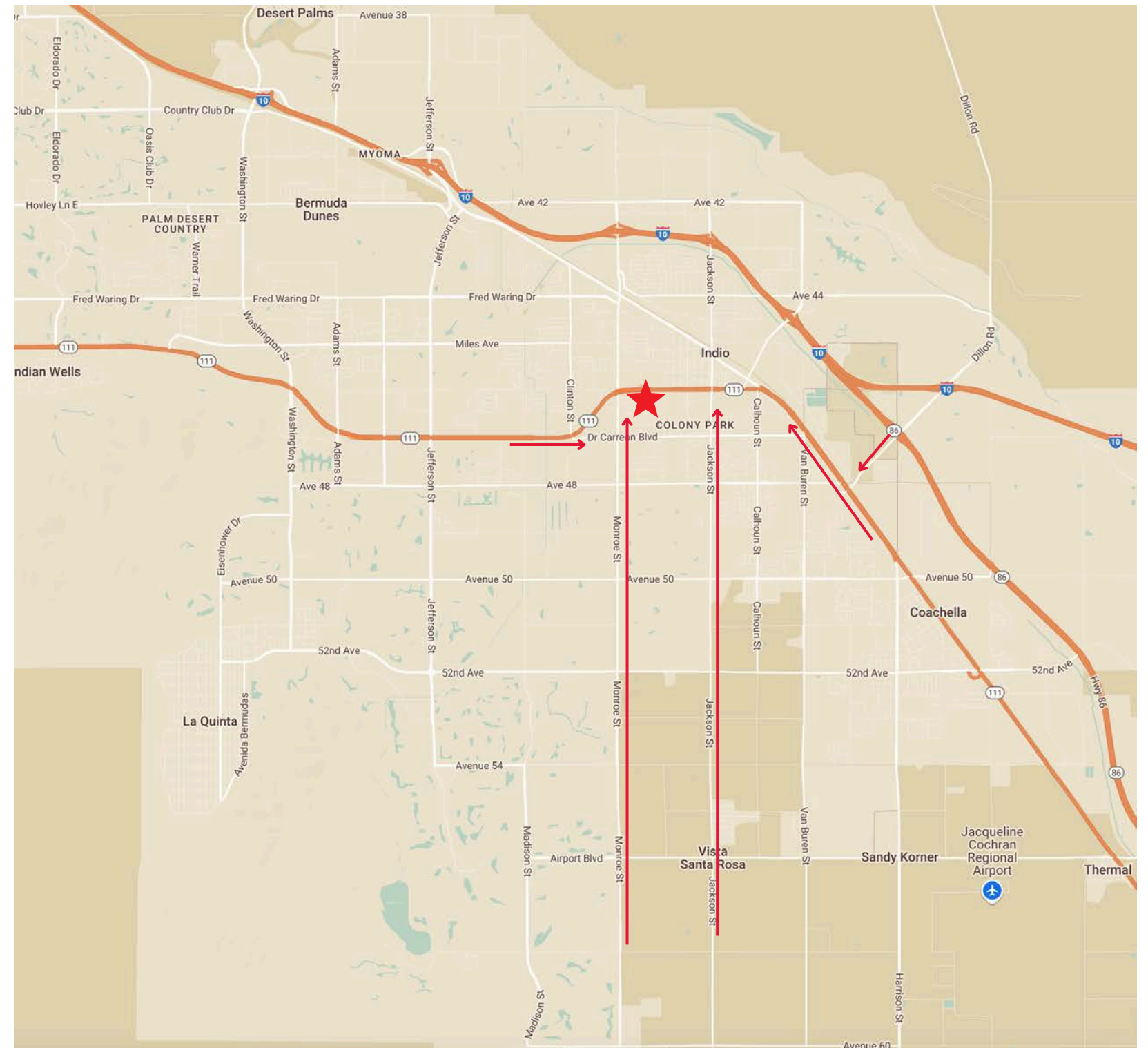


## Future Rooftops = Future Shoppers

- **19,001 future and planned dwelling units are in the pipeline across the IGM trade area**
- These new residential communities will rely on Hwy 111 for retail access, positioning IGM as their closest major commercial center
- Major north-south connectors like Jackson St. and Monroe St. provide direct access from growing residential communities to the south, linking future populations in Coachella, South La Quinta, and unincorporated Riverside County to IGM.
- The volume of planned housing ensures continued population growth and retail demand over the next 5-10 years

## PRIME REGIONAL ACCESS

- High-visibility corner with direct access from both Monroe St. and Hwy. 111.
- Monroe St. and Jackson St. are key north-south connectors linking neighborhoods from north of I-10 to South Indio, La Quinta, Coachella, and unincorporated Riverside County.
- Hwy. 111 is the Valley's primary east-west commuter and retail corridor, connecting Palm Springs to Coachella.
- California State Hwy 86 connects communities from the south and Salton Sea region to Hwy. 111.



**ACCESS TO INDIO GRAND MARKETPLACE**  
INDIO GRAND MARKETPLACE

82123-82229 HWY 111 | INDIO, CA 92201

## 2024 ESTIMATES

Past population Growth (2010–2020): From 78,997 to 89,137 in the City of Indio — an increase of over 10,000 residents at a 1.21% annual rate.

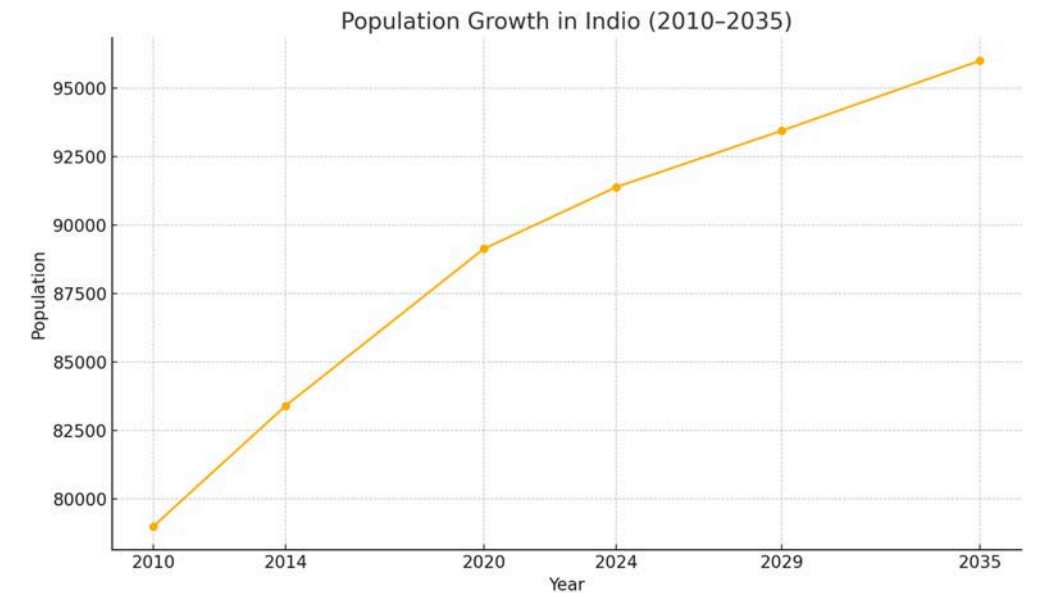
### Recent Forecasts City of Indio:

2024: 91,386

2029: 93,442

2035: 96,000

**Population Drivers:** Young families, new housing developments, and an increasing Latino population share. *Source: City of Indio*



INDIO GRAND MARKETPLACE 82227 HWY 111, Indio, CA 92201	1 MILE	3 MILES	5 MILES	POTENTIAL TRADE AREA
POPULATION	22,319	108,569	184,528	169,340
AVERAGE HH INCOME	\$68,681	\$104,731	\$117,150	\$97,550
HOUSEHOLDS	6,757	34,524	62,136	51,244
MEDIAN AGE	31.4	36.3	38.5	35.4



### TRAFFIC COUNTS

**52,149 CPD**

(27,400 CPD - Hwy. 111 and 25,323 CDP on Monroe St.)

## DEMOGRAPHICS & POPULATION

INDIO GRAND MARKETPLACE

82123-82229 HWY 111 | INDIO, CA 92201

## INDIO CALIFORNIA - A PRIME RETAIL DESTINATION

A City on the Rise Indio, CA is experiencing remarkable growth, fueled by a thriving tourism economy, increasing population, and a flourishing residential market. As the largest and fastest-growing city in the Coachella Valley, Indio boasts a diverse and expanding population with increasing demand for quality retail, dining, and services. With limited modern retail offerings in the immediate area, the Indio Grand Marketplace fills a critical gap in the market, creating a high-visibility, high-traffic destination for national and regional tenants.

The city's year-round sunshine, cultural attractions, and renowned events like the Coachella and Stagecoach festivals draw millions of visitors annually, while a strong local community provides consistent foot traffic beyond peak tourist seasons. Businesses locating within the Indio Grand Marketplace will benefit from a well-established customer base, exceptional visibility on Highway 111, and the synergy of a thoughtfully curated mixed-use environment.

There is a growing need for diverse dining concepts, wellness services, and everyday conveniences in the region. The Indio Grand Marketplace presents an exceptional opportunity for retailers, restaurants, fitness concepts, and service providers to tap into a vibrant and underserved market poised for continued expansion.





## NEW AREA DEVELOPMENTS

There are several new and up and coming civic developments in the immediate area, as well as commercial parcels which the City of Indio acquired and repackaged in the downtown area to attract developers for larger-scale revitalization.

- The newly expanded College of the Desert Indio Campus was completed in August 2024, and is expected to serve 8,000 to 10,000 students at full capacity.
- California Desert Trial Academy is the only law school in Riverside County, and will be accompanied by the expansion of the College of the Desert.
- Loma Linda University Children's Health opened in Indio in 2018, providing pediatric care, urgent care, and dental services.
- John J. Benoit Detention Center (now open) and Juvenile and Family Courthouse should be completed in next few years.
- New Library and City Hall opening in 2025/2026 enhances civic capacity
- Center Stage entertainment venue attracts thousands through monthly events like Second Saturdays, Chella, and food festivals in downtown Indio.



*College of the Desert Indio Campus.*



*Loma Linda University Children's Hospital Indio, CA Location.*

**INDIO GRAND MARKETPLACE**

# FOR MORE INFORMATION

**BRYAN NORCOTT**

Executive Managing Director  
NEWMARK  
t 213-298-3595  
bryan.norcott@nrmk.com  
CA RE Lic: #1200077

**GREG BRADBURY**

SVP of Leasing  
HAAGEN COMPANY  
Office : 310-820-1200 x114  
Cell: 610-662-6009  
gbradbury@haagenco.com

**LEA CLAY PARK**

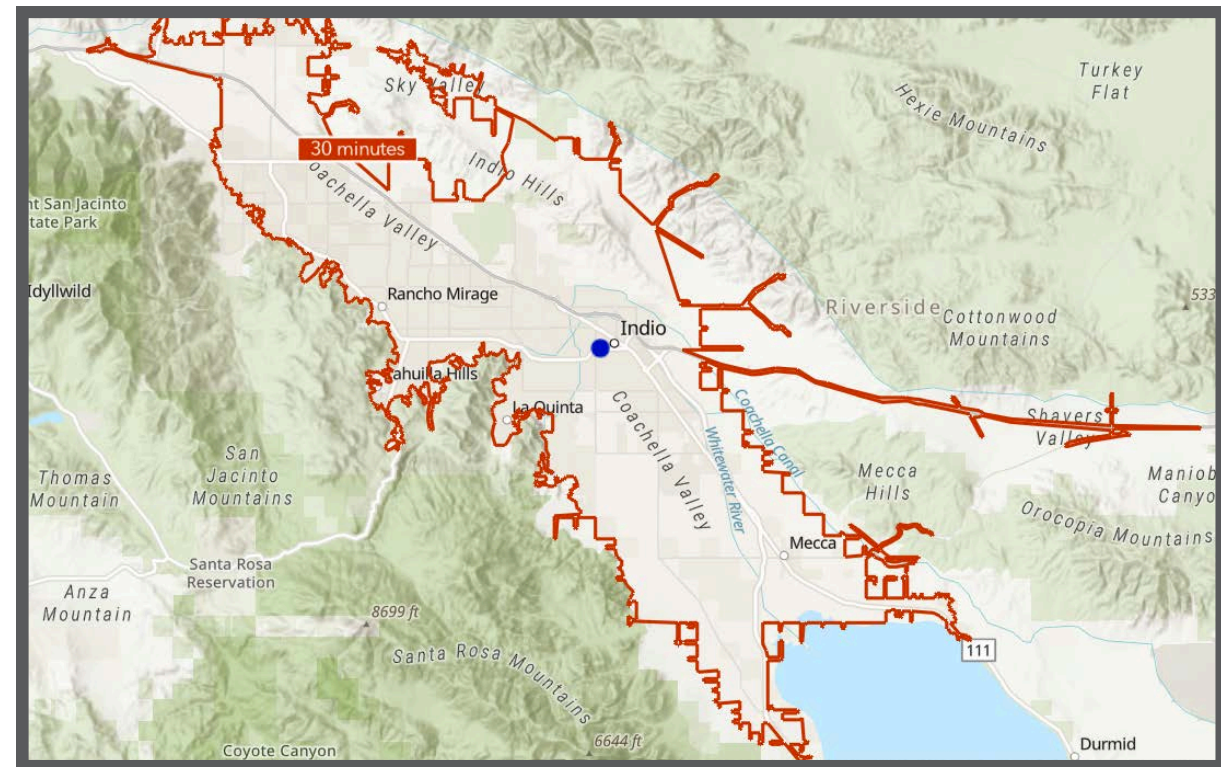
AXIOM RETAIL ADVISORS  
Office: 949-521-7437  
Cell: 949-922-8310  
lea@axiomra.com  
CA RE Lic: #01087365

**STEPHANIE SKRBIN**

AXIOM RETAIL ADVISORS  
Office: 949-521-7436  
Cell: 310-560-0131  
stephanie@axiomra.com  
CA RE Lic: #01405095



CONCEPT ONLY. SUBJECT TO CHANGE.



82123 - 82229 HWY 111, INDIO, CA 92201