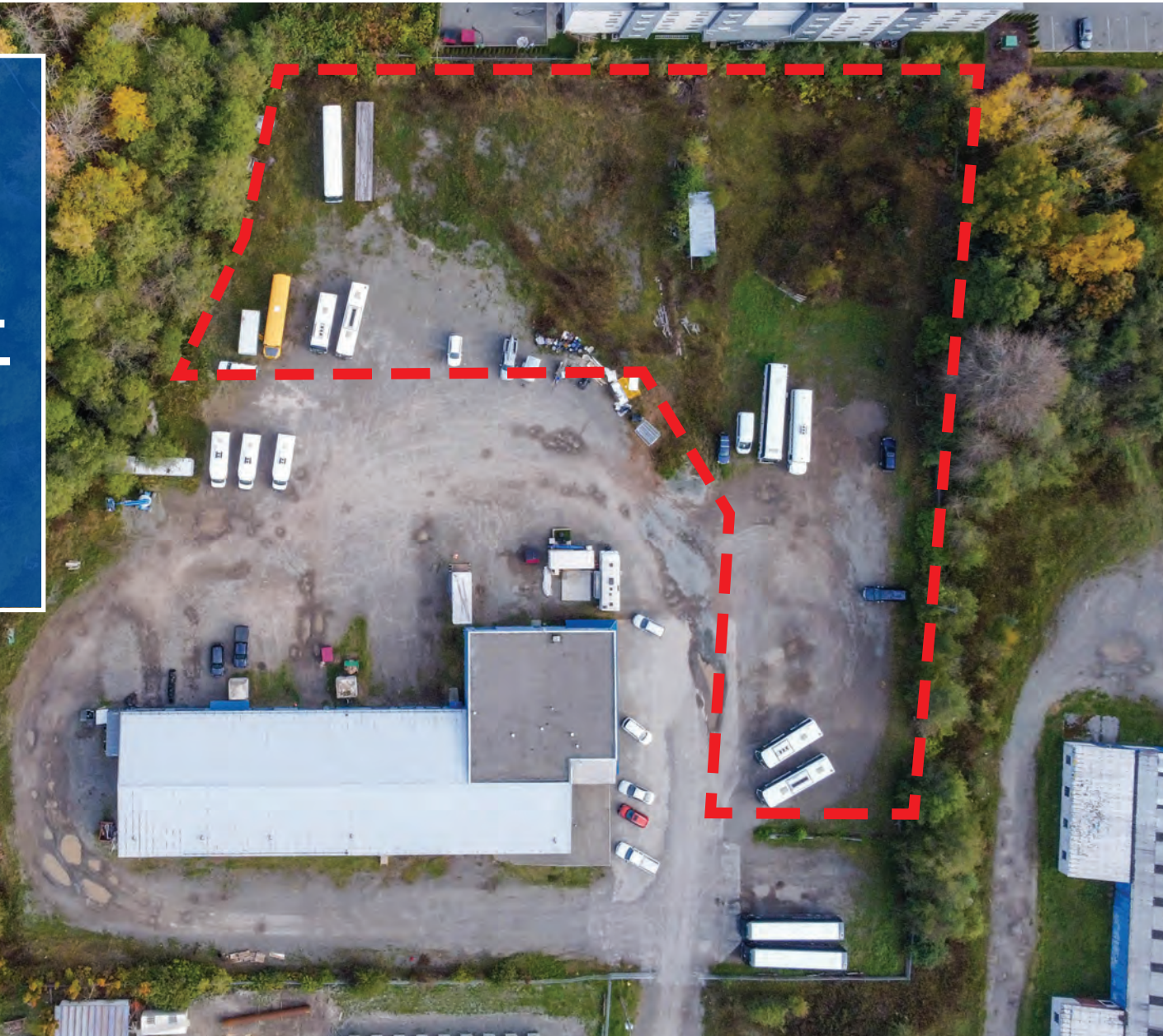


FOR LEASE

# YARD SPACE OR POTENTIAL BUILD-TO-SUIT

5130 Park Avenue  
Terrace, BC



**Kris McLaughlin Personal Real Estate Corporation**  
RE/MAX Commercial - RE/MAX Kelowna  
#100 - 1553 Harvey Ave, Kelowna, BC V1Y 6G1  
kris@commercialbc.com  
250.870.2165



*The Commercial  
Real Estate Experts*



# YARD SPACE FOR LEASE: 5130 Park Ave, Terrace, BC

## Property Details

### Civic Address:

5130 Park Avenue, Terrace, BC

### Location:

Located just off the northeast corner of Highway 16 (Yellowhead Hwy) and Kalum Lake Road

### Available Portion of Lot:

±1.55 Acres (±67,560 SF)

### Zoning:

C3 - Service Commercial

### Lease Rate:

\$1.50/SF + Additional Rents and Applicable Taxes

## Industrial Yard Space in Central Terrace, BC

### Opportunity:

RE/MAX Commercial - RE/MAX Kelowna presents this outstanding opportunity to lease yard space just off Kalum Lake Road, centrally located in Terrace, BC.

### Features:

Yard space to the rear of the building at 5130 Park Avenue.

- ▶ Approximately 1.55 acres of flat usable yard space with access over a pan-handle right-of-way off Kalum Lake Road
- ▶ Generally "L" shaped with the main portion being ±300 FT x ±140 FT
- ▶ Potential for a build-to-suit industrial type building
- ▶ Centrally located with easy access to Highway 16 and Highway 113 via Kalum Lake Rd
- ▶ For more information or to arrange a tour of this space contact Kris McLaughlin Personal Real Estate Corporation of RE/MAX Commercial - RE/MAX Kelowna at 250 870 2165 or by email at [kris@commercialbc.com](mailto:kris@commercialbc.com)



**YARD SPACE FOR LEASE: 5130 Park Ave, Terrace, BC**

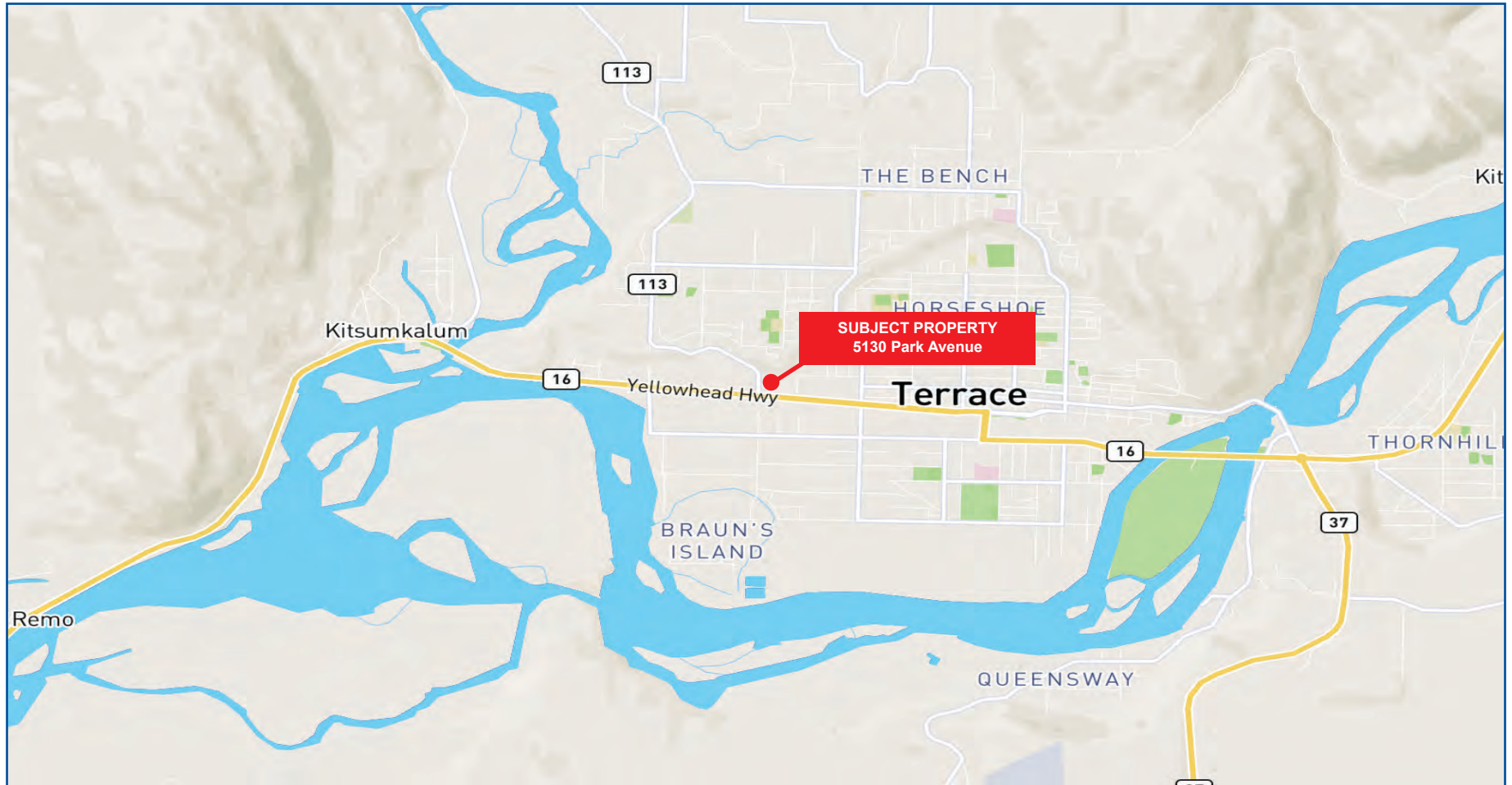


# YARD SPACE FOR LEASE: 5130 Park Ave, Terrace, BC

## Yard Photos



# YARD SPACE FOR LEASE: 5130 Park Ave, Terrace, BC



**Kris McLaughlin Personal Real Estate Corporation**  
**RE/MAX Commercial - RE/MAX Kelowna**  
#100 - 1553 Harvey Ave, Kelowna, BC V1Y 6G1  
kris@commercialbc.com  
250.870.2165



*The Commercial  
Real Estate Experts*



© Kris McLaughlin Personal Real Estate Corporation - All Rights Reserved.

This document/email has been prepared by Kris McLaughlin Personal Real Estate Corporation for advertising and general information only. Kris McLaughlin Personal Real Estate Corporation, RE/MAX Commercial or RE/MAX Kelowna makes no guarantees, representations or warranties of any kind, expressed or implied, regarding the information including, but not limited to warranties of content, accuracy and/or reliability. All information contained in this document has been obtained from sources believed to be reliable. It is the responsibility of the reader to independently confirm and verify the accuracy of the information and content of this document and to satisfy themselves as to its completeness. Any financial projects, assumptions, or estimates are used for example only and may or may not reflect the current or future performance of the property. This communication is not intended to cause or induce breach of an existing listing agreement.

