

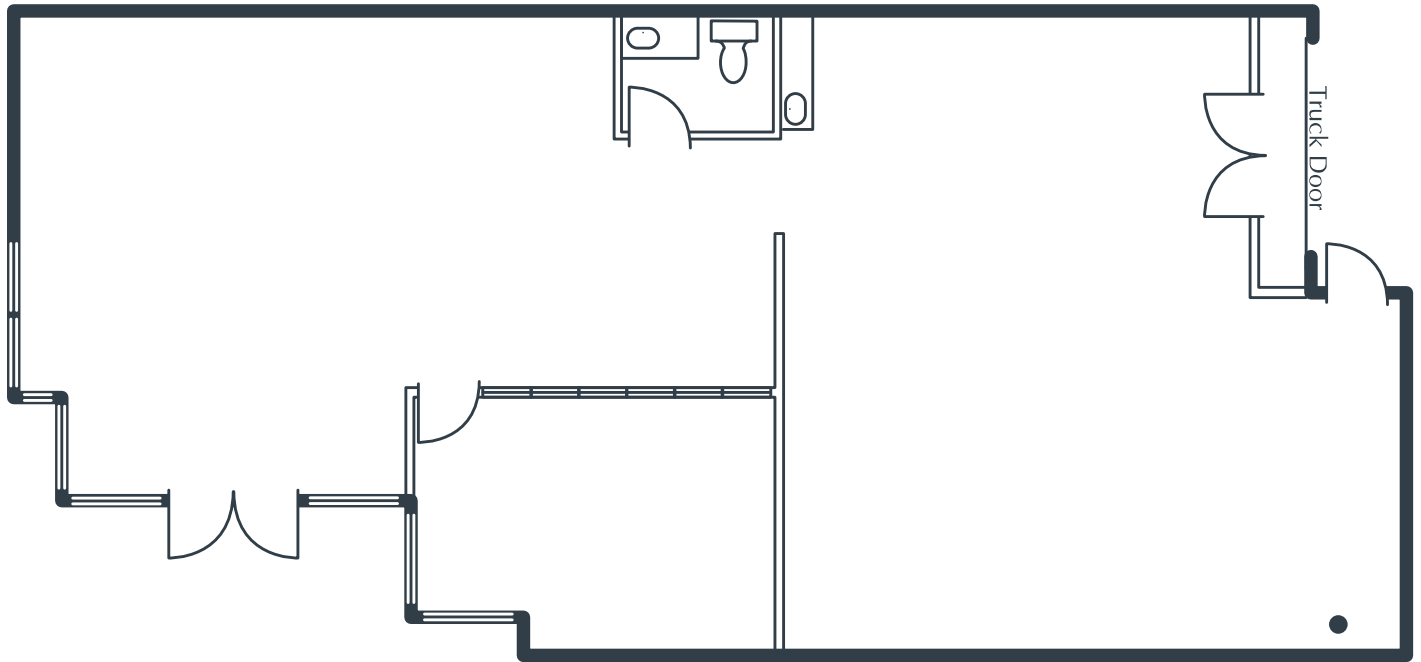
AMANECER BUSINESS PARK

940 Calle Amanecer, Suite P
San Clemente, CA

1,960 Square Feet

\$1.75 SF/MO

Triple Net



NOTES

- Reception
- Window Office
- Restroom
- Coffee Bar
- Large Open Work Area
- Ground-Level Truck Door
- Part of a Professionally Managed Business Park

Created by Olen Commercial Realty Corp., 2022.
Information is not to be published or copied without
written approval. Square footage and floor plans are
estimates and should be separately verified. All rates,
terms, floor plans, and building facts are subject to
change without notice.

© 02.11.2026

LAURA PRESTON-FAYERMAN

Senior Leasing Director

949.719.7205

lfayerman@olen.com



Seven Corporate Plaza

Newport Beach, CA

949.644.6536

www.olen.com