

821 Jupiter Park Drive

Jupiter, FL 33458

±35,782 OFFICE/WAREHOUSE ON ±3.25 ACRES AVAILABLE



Property Highlights

- + ±35,840 SF total - 2 separate freestanding buildings
- + 821 Building: ±9,566 SF office building
- + 831 Building: ±26,274 SF warehouse/manufacturing building
- + 3.25 acre site
- + Heavy power in the manufacturing area
- + 14' - 26' clear height in the manufacturing area
- + (3) grade level overhead doors: (2) 18' x 18' and (1) 12' x 12'
- + High capacity interior overhead cranes
- + Exterior 30' x 40' x 20' deep water testing tank with overhead crane
- + Zoned I-1 (Industrial Park, Light Industrial) - Town of Jupiter
- + Built in 1991
- + Campus-like setting with separate entrances for both buildings

Contact Us

Robert Smith
Executive Vice President
+1 561 707 5558
robert.c.smith@cbre.com

Kirk Nelson
Executive Vice President
+1 561 716 9936
kirk.nelson@cbre.com

Pricing - Call for Details

Additional Photos - Exterior



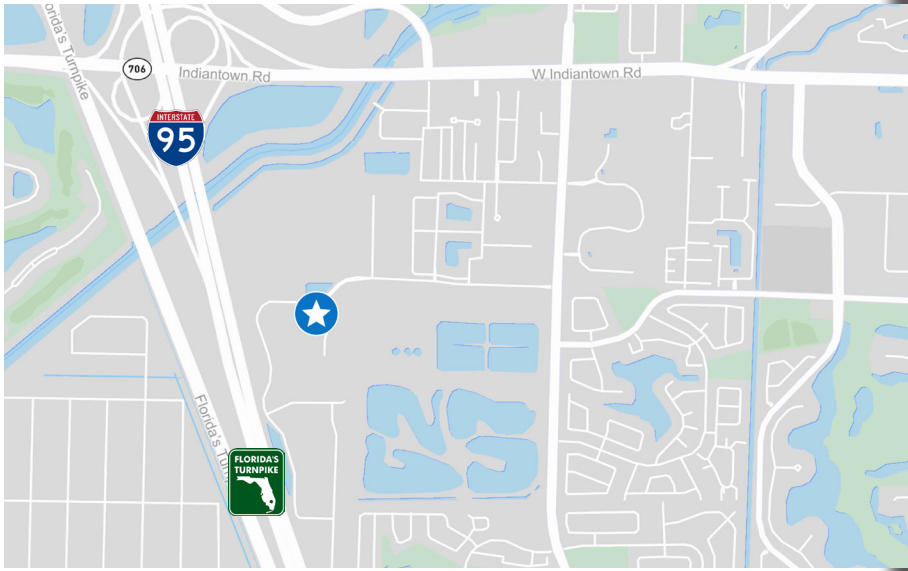
Additional Photos - Interior



821 Jupiter Park Drive
Jupiter, FL 33458

For Sale or Lease

Location Map



DRIVE DISTANCES

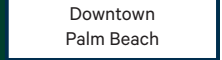
>1.0 Mile to



>1.0 Mile to



10.7 Miles to



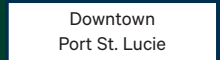
17.3 Miles to



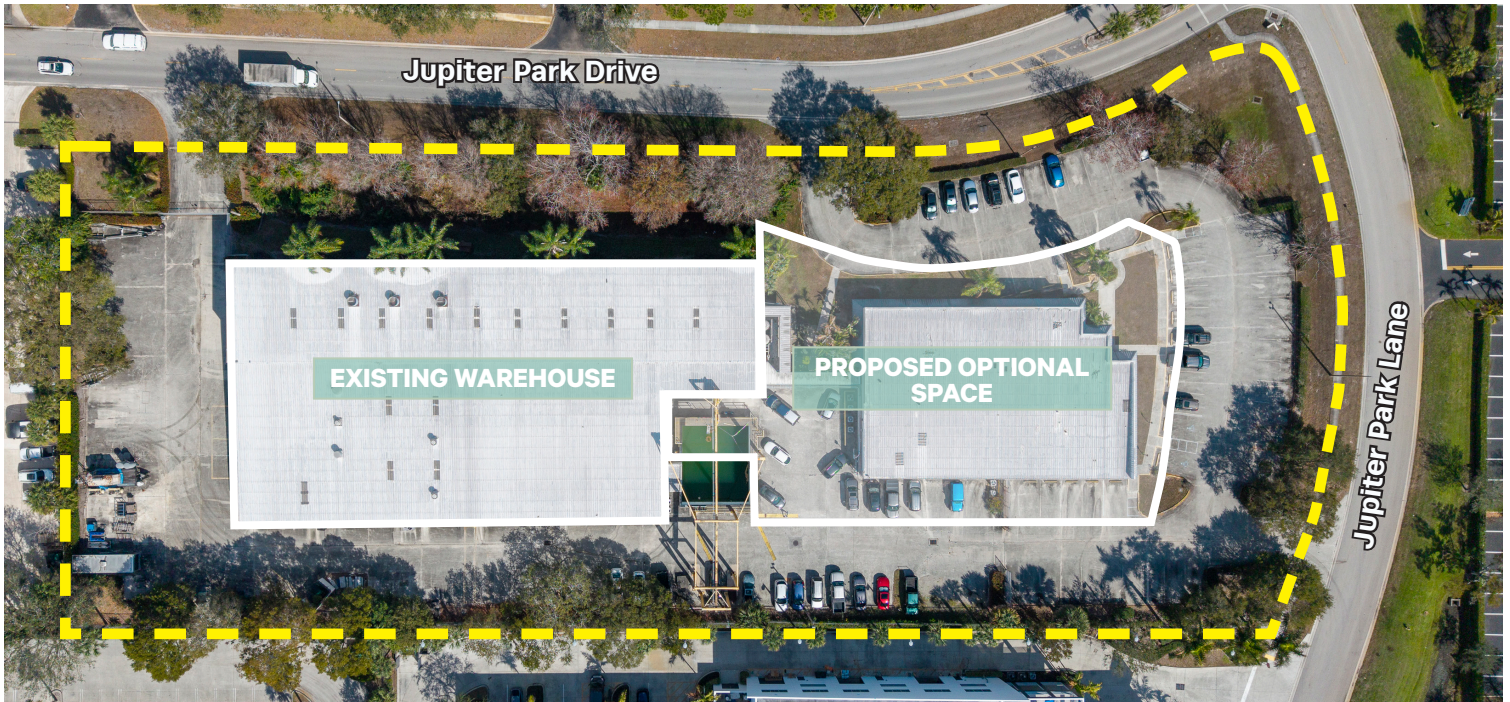
22.2 Miles to



32.1 Miles to



Aerial



Contact Us

Robert Smith
Executive Vice President
+1 561 707 5558
robert.c.smith@cbre.com

Kirk Nelson
Executive Vice President
+1 561 716 9936
kirk.nelson@cbre.com

© 2026 CBRE, Inc. All rights reserved. This information has been obtained from sources believed reliable, but has not been verified for accuracy or completeness. You should conduct a careful, independent investigation of the property and verify all information. Any reliance on this information is solely at your own risk. CBRE and the CBRE logo are service marks of CBRE, Inc. All other marks displayed on this document are the property of their respective owners, and the use of such logos does not imply any affiliation with or endorsement of CBRE. Photos herein are the property of their respective owners. Use of these images without the express written consent of the owner is prohibited.