



Donegan Smith Warehouses

Donegan Smith Warehouses offers a prime industrial and flex space solution with three multi tenant buildings encompassing a total of 105,380± sf of leasable area.

- 18 foot clear ceilings heights
- Multiple access points, including two entrances/exits on Smith Street
- Located less than one mile north of Downtown Kissimmee with easy access to Osceola Parkway, Orange Blossom Trail, Irlo Bronson Hwy and John Young Parkway

Get more information

Lisa Bailey, SIOR
Principal
+1 407 440 6645
lisa.bailey@avisonyoung.com

Warehouse for Lease

Donegan Smith Warehouses
2420 - 2450 Smith Street, Kissimmee, FL 34744



Lisa Bailey, SIOR
Principal
+1 407 440 6645



Warehouse for Lease

Donegan Smith Warehouses
2420 - 2450 Smith Street, Kissimmee, FL 34744



Population	1 Mile	3 Miles	5 Miles
Total Population - 2024	13,503	94,544	230,483
Projected 2029 Population	15,031	115,725	276,949

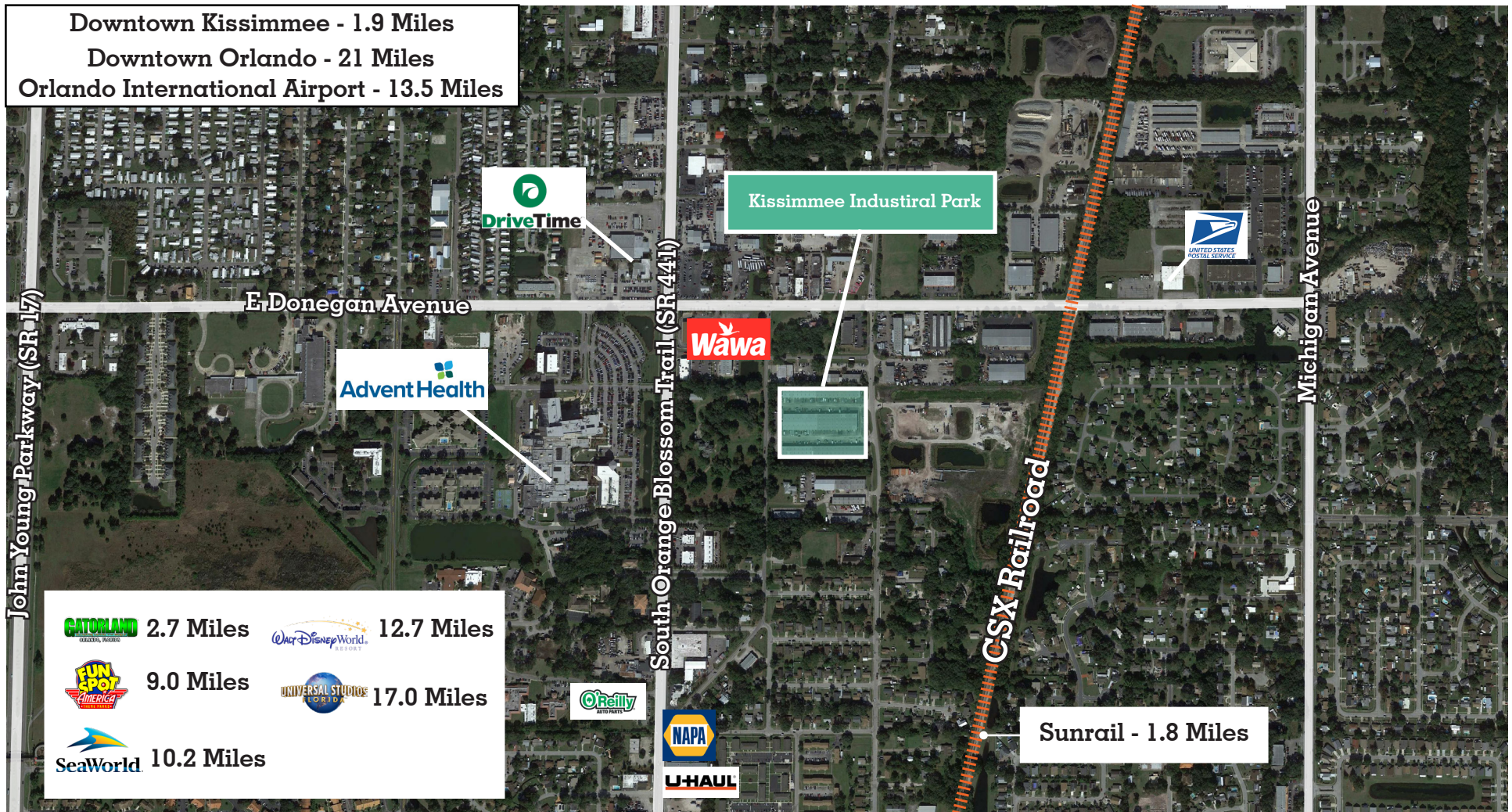
Households & Income	1 Mile	3 Miles	5 Miles
Total Households	4,704	34,285	81,763
# of Persons Per HH	2.82	2.91	3.02
Average HH Income	\$65,855	\$83,990	\$96,683

Businesses	1 Mile	3 Miles	5 Miles
Total Businesses	918	5,260	9,012
Total Employees	6,186	38,882	67,364

Lisa Bailey, SIOR
Principal
+1 407 440 6645



Donegan Smith Warehouses
2420 - 2450 Smith Street, Kissimmee, FL 34744



Get more
information

Lisa Bailey, SIOR
Principal
+1 407 440 6645

**AVISON
YOUNG**

2420 | Suites G | 1,512± sf

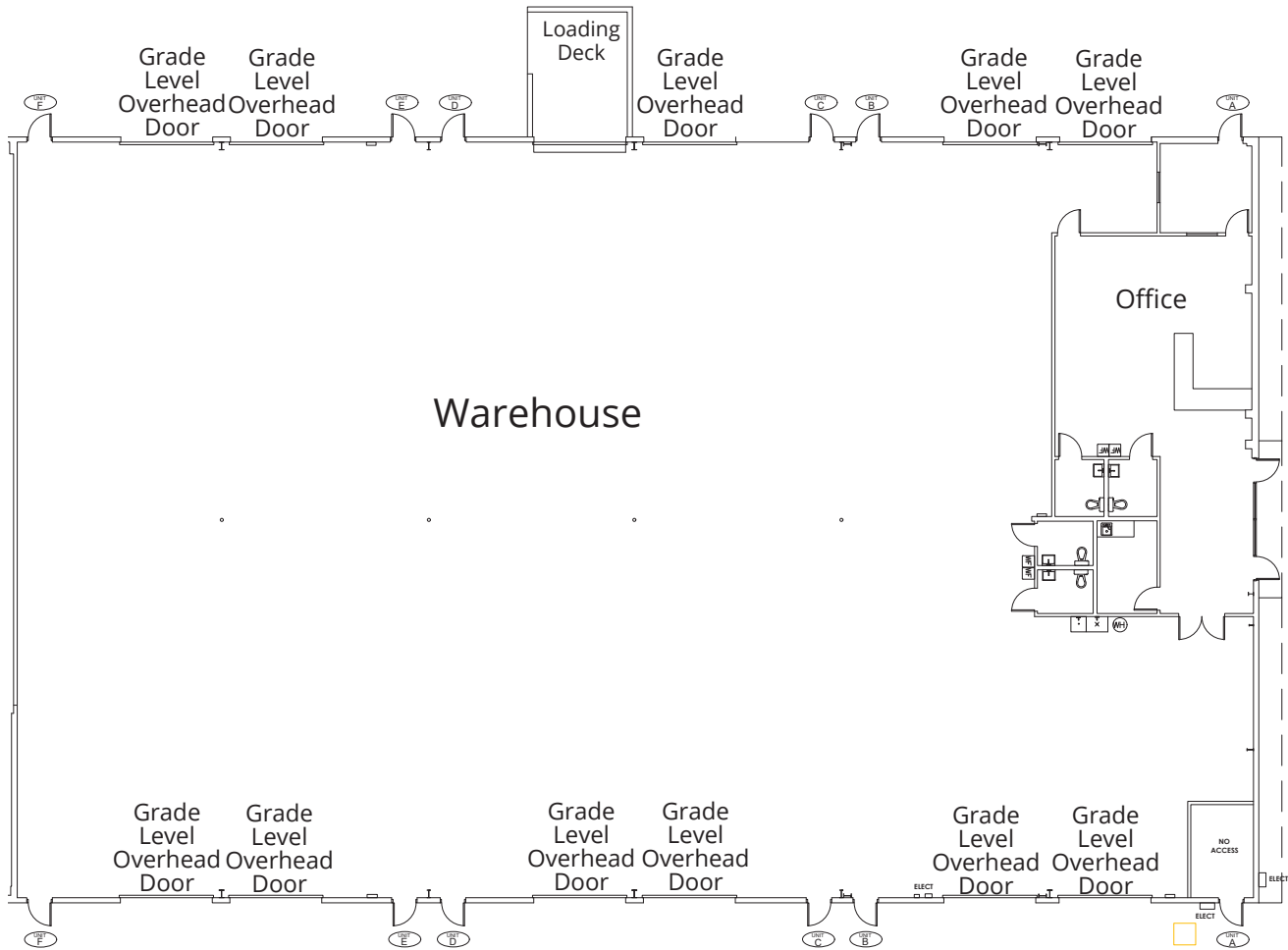


**Get more
information**

Lisa Bailey, SIOR
Principal
+1 407 440 6645



2440 | Suites A-F | 16,228± sf

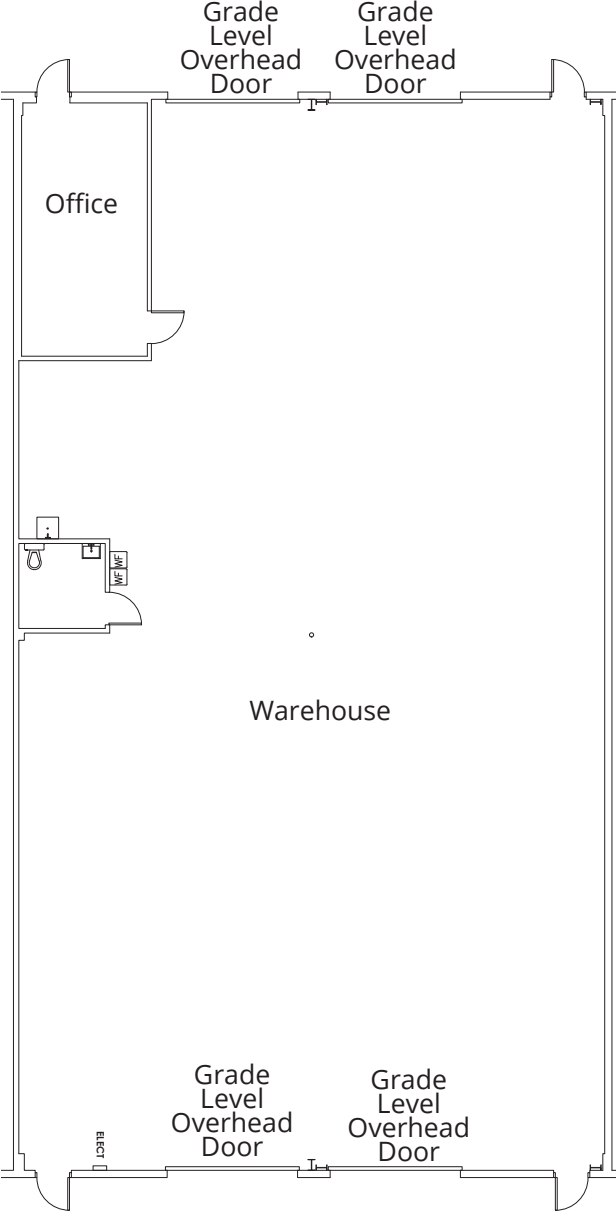


**Get more
information**

Lisa Bailey, SIOR
Principal
+1 407 440 6645



2440 | Suites G-H | 5,452± sf

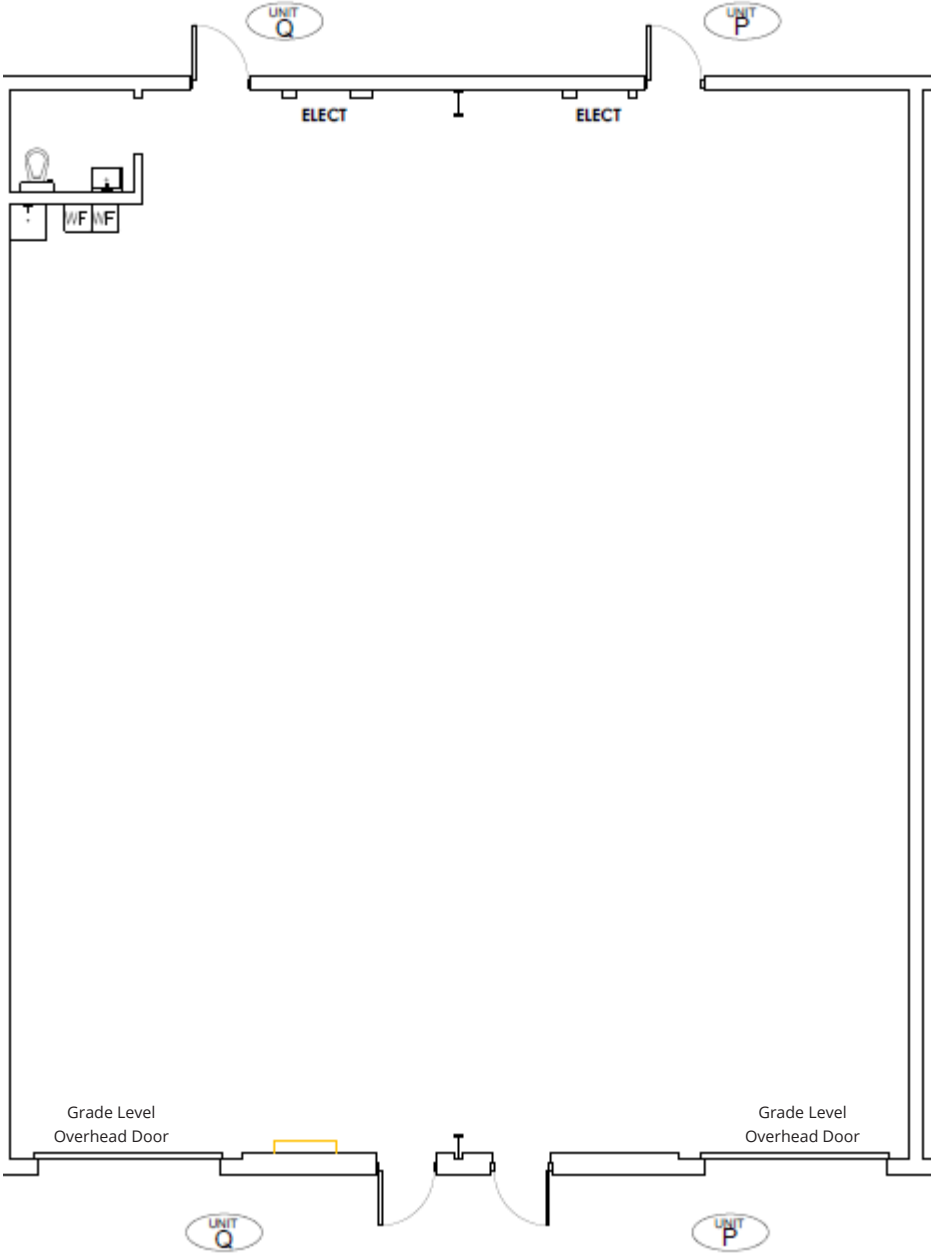


**Get more
information**

Lisa Bailey, SIOR
Principal
+1 407 440 6645



2450 | Suites P-Q | 3,022± sf

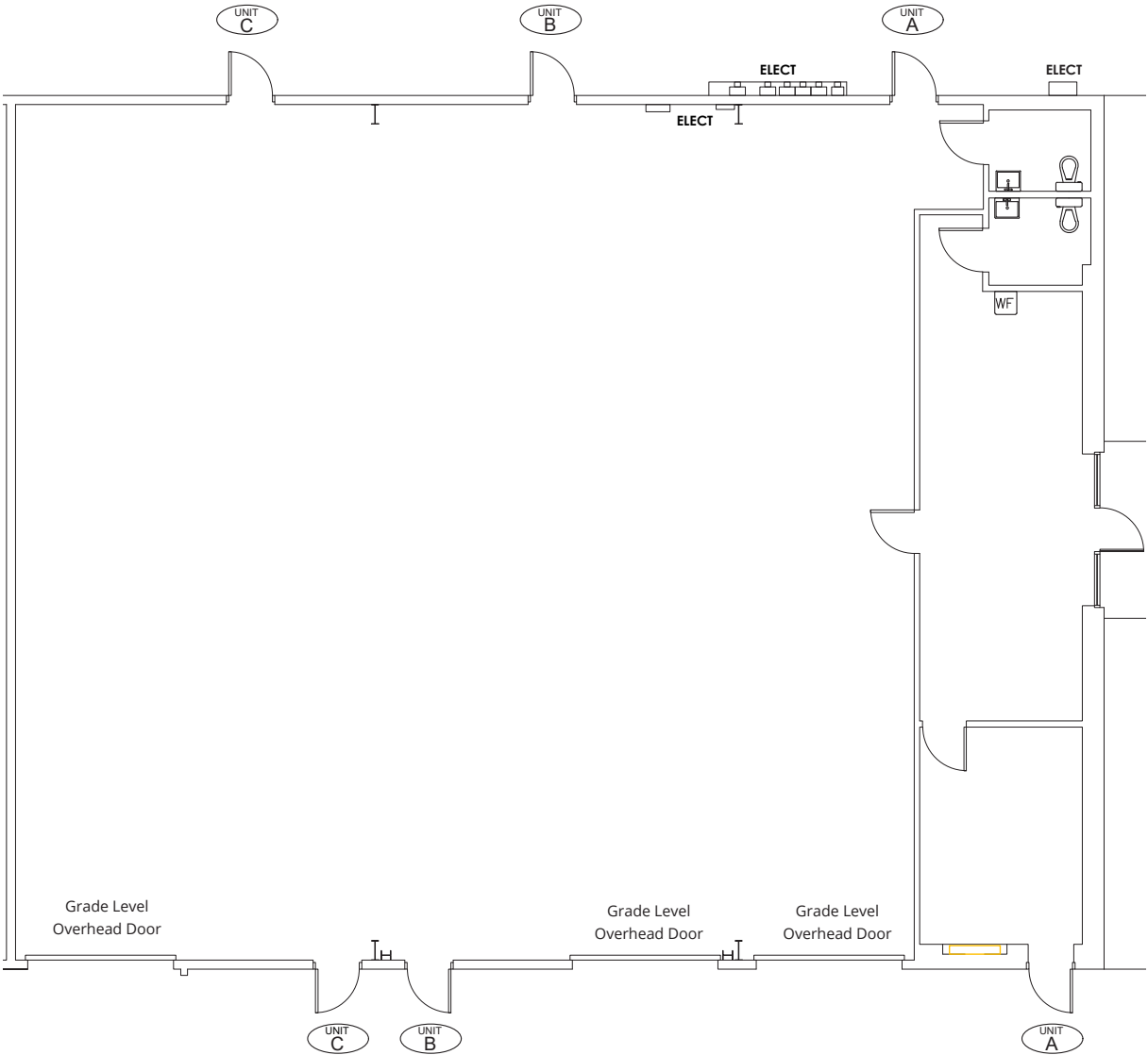


**Get more
information**

Lisa Bailey, SIOR
Principal
+1 407 440 6645



2450 | Suites A-C | 4,499± sf



**Get more
information**

Lisa Bailey, SIOR
Principal
+1 407 440 6645

