

Midtown Retail Space Available For Lease
2030 Thomasville Road
Tallahassee, Florida 32308



Exclusively Offered By
Jeff Billingsley
Broker-Associate
850 668-3333 or 850 556-2147
jbillingsley@johnnyblurealty.com

While this information is deemed to be correct, no guarantee is given as to its accuracy. Buyer should independently verify all information.

All Photos are the Property of Craig Commercial Realty and shall not be used or reproduced without permission.

Executive Summary

2030 Thomasville Road Tallahassee, Florida



2030 Thomasville Road/Glendale Square is a boutique retail center located in the popular Betton/Midtown Area. The available space is a hard to find 1,452 square foot end cap retail unit. The center has excellent visibility on Thomasville Road, and the site is surrounded by popular and affluent neighborhoods. The Midtown/Betton area is one of Tallahassee's most desired retail areas and is well known for dining, nightlife, and boutique shopping.



- **1,452 Sq. Ft. End Cap Unit**
- **Additional Mezzanine Space of 735 sq. ft.**
- **Frontage/Signage on Thomasville Road**
- **Excellent Access and Visibility with a Traffic Count of 34,000 Cars Per Day**
- **Average HH Income of \$85,664 within 1 mile.**
- **Large Showroom/Display Area**
- **2 Bathrooms**
- **Ample Parking**
- **Located in Popular and Growing Midtown Area**
- **One of the most Visible Suites in the Center**
- **Ideal for Gift Shop, Specialty Clothing, Jewelry Store, Specialty Furniture, or Office Concepts Needing Retail Frontage etc.**

Lease Rate: \$20.00 per sq. ft. Plus CAM

Craig Commercial Realty 3360 Capital Circle Northeast, Suite A, Tallahassee, Florida 32308
Phone: (850) 668-3333 Fax: (850) 668-4756

While this information is deemed correct, no guarantee is given as to its accuracy. Buyer should verify information.

2030 Thomasville Road Exterior



2030 Thomasville Road

Unit Exterior



2030 Thomasville Road Monument
Sign



2030 Thomasville Road
Unit Interior



2030 Thomasville Road
Unit Interior



2030 Thomasville Road

Unit Interior



2030 Thomasville Road

Unit Interior



2030 Thomasville Road

Unit Interior



2030 Thomasville Road
Unit Interior



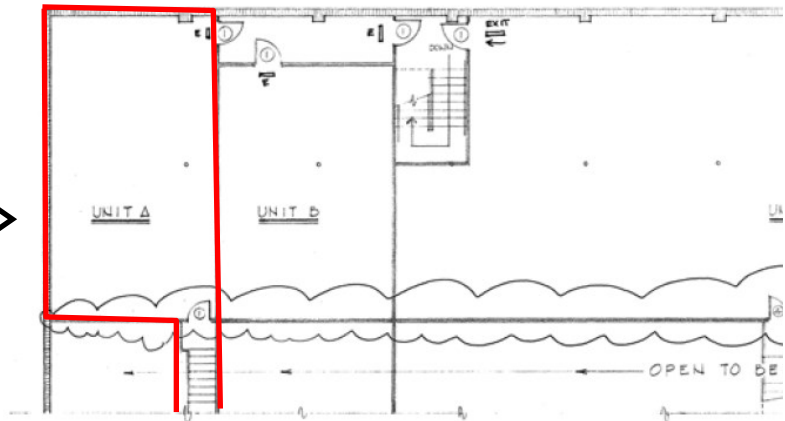
2030 Thomasville Road
Unit Stairwell to 2nd Floor Mezzanine



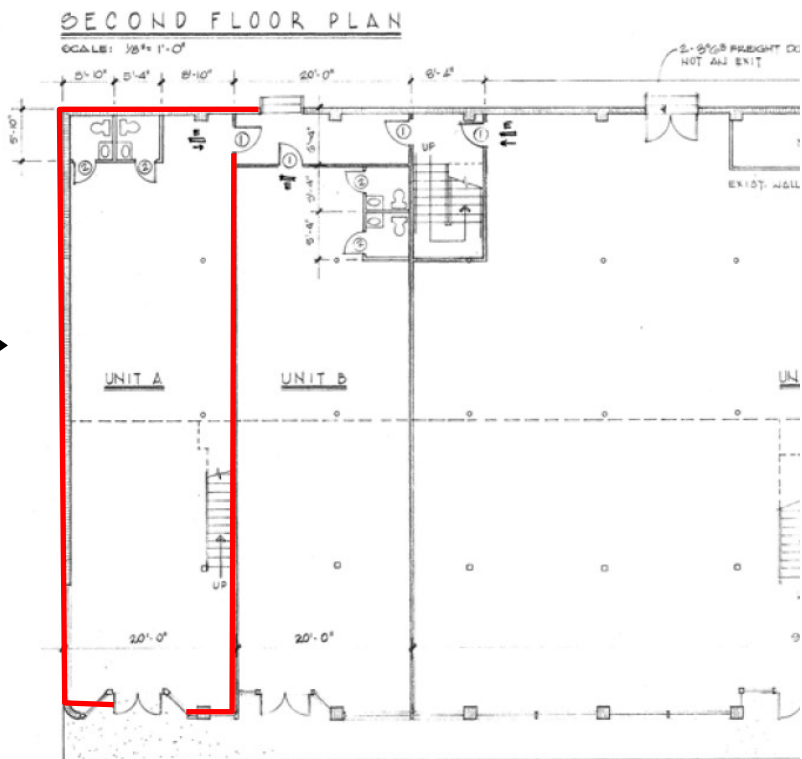
2030 Thomasville Road
Unit Interior-Bathroom



Mezzanine →



First Floor →



FIRST FLOOR PLAN
SCALE: 1/8" = 1'-0"

- DOOR SCHEDULE
- ① 3' 0" B-LABEL, ONE-HOUR STEEL CLAD, INSULATED DOOR
 - ② 2' 0" INTERLOCK