

50

ALDERLEY
ROAD

The Property

50 Alderley Road is a well-positioned, glazed-fronted building located in the heart of Wilmslow town centre. The property benefits from a good level of on-site parking, with additional local car parking facilities available nearby.

The building is on the doorstep of Wilmslow town centre, offering a diverse mix of independent retailers, traditional food and drink outlets, and national retailers.

The first-floor office space benefits from excellent natural light, enhanced by floor-to-ceiling glazing. The floorplate extends to 4,034 sq ft and is currently under review for refurbishment, with improvements coming soon.



Building Specification



PARKING



MEETING ROOMS



LED LIGHTING



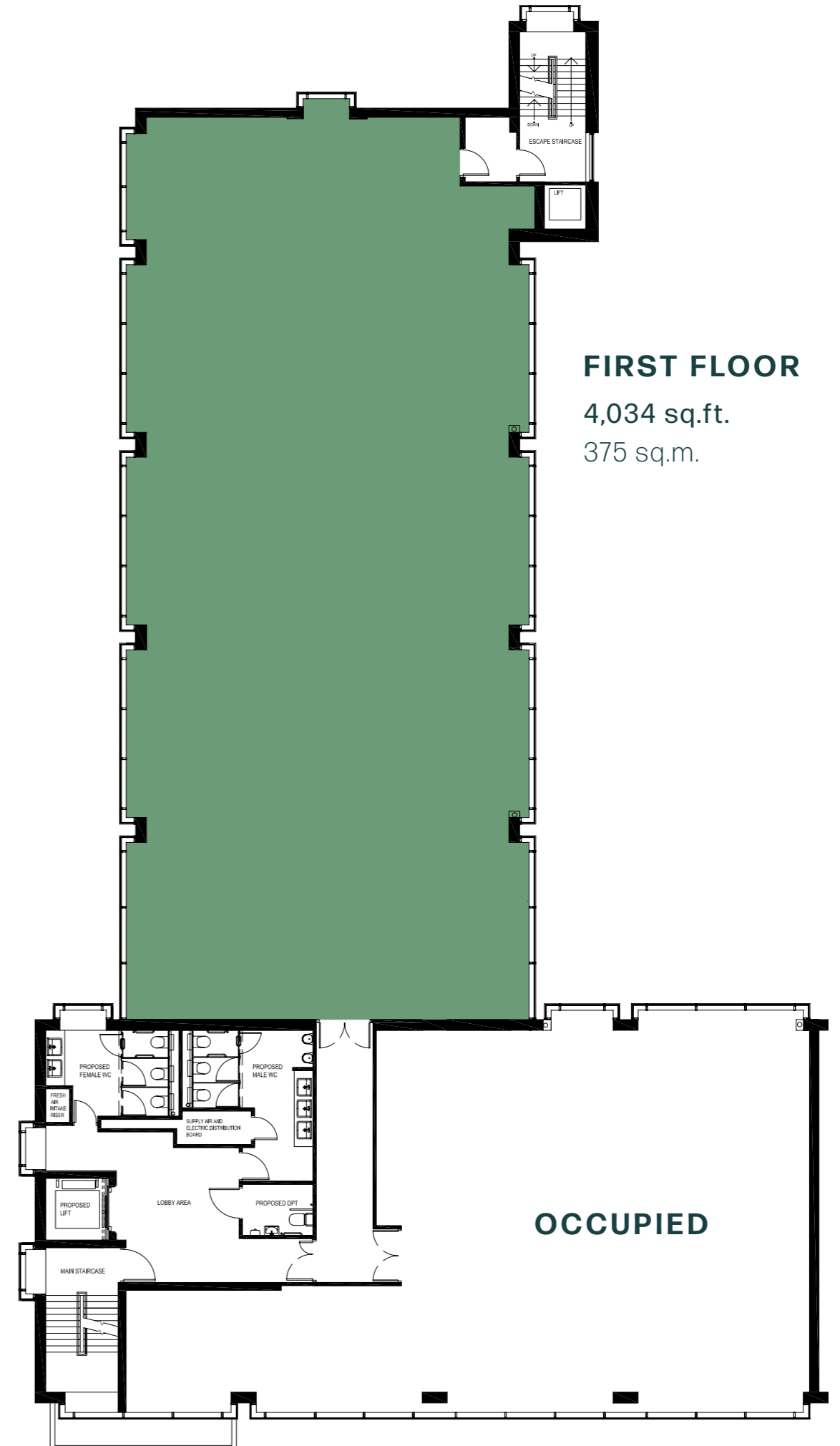
TOWN CENTRE LOCATION



KITCHEN FACILITIES



BUILDING MANAGER



Commuting made easy

Wilmslow benefits from being close to the A34 bypass which runs past the town connecting to the M60 and Manchester City Centre, whilst the M6 and M56 are a short car journey away.

Manchester Airport is within a 10 minute drive to Wilmslow (via the A555) which offers flights to over 200 destinations worldwide.

Wilmslow train station offers direct and frequent services to Manchester Piccadilly (27 minute travel time), Stockport (13 minute travel time) and London Euston (1 hour 55 minute travel time).



DRIVING



Sandfield House

A34
2 Mins

A555
5 Mins

Manchester Airport
10 Mins

M60
12 Mins

M56
13 Mins

Manchester City Centre
25 Mins

M6
28 Mins

Chester
50 Mins

Liverpool
1 Hour



1 HOUR



TRAIN



Wilmslow

Alderley Edge
3 Mins

Chelford
7 Mins

Cheadle Hulme
7 Mins

Manchester Airport
8 Mins

Stockport
13 Mins

Manchester Piccadilly
27 Mins

Crewe
28 Mins

Stafford
40 Mins

London Euston
1 Hour 55 Mins



2 HOURS

50

ALDERLEY
ROAD

50 ALDERLEY ROAD, WILMSLOW, SK9 1NY

Orbit
Developments

01625 588200
www.orbit-developments.co.uk

DISCLAIMER: Whilst the statements contained in these particulars are given in good faith and as a general guide to the property, they do not form any part of an offer or contract. Neither the Lessor or their Agents can accept responsibility for them. Interested parties must satisfy themselves by inspection, or otherwise, as to the correctness of these particulars. Orbit Investments (Properties) Limited Co. No. 2274745. Registered in England and Wales. (1225)