

FOR LEASE | UNIQUE OFFICE SPACE

950 DUPONT STREET

TORONTO | ON





DETAILS

Location North Side of Dupont Street, just West of Ossington Avenue [Click Here for Map](#)

Building Details	<u>Unit</u>	<u>Size</u>
	Main Floor	3,500 - 12,000 SF
	Second Floor	3,500 - 11,278 SF

*Note – All measurements are approximate and will be confirmed prior to offering

Term 3 - 10 Years

Possession 30 to 60 Days

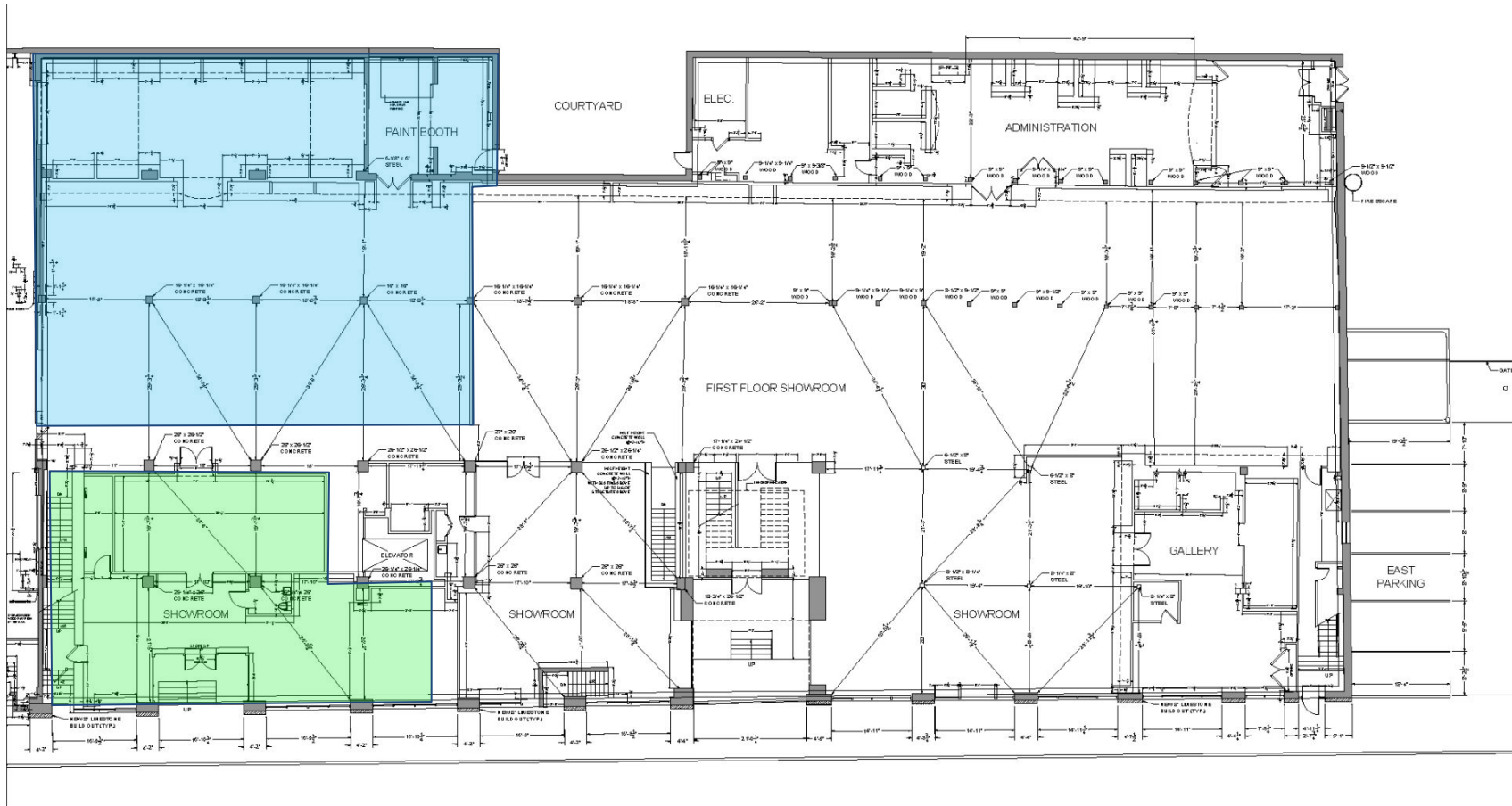
Rental Rate Call Agent

FEATURES

- Prestige Brick and Beam Building
- Abundant Natural Light
- 14 to 16 Foot Ceilings
- Variety of Office Sizes and Types Available to Accommodate a Variety of Business Needs
- 15 Minute Walk from Ossington TTC Subway Station



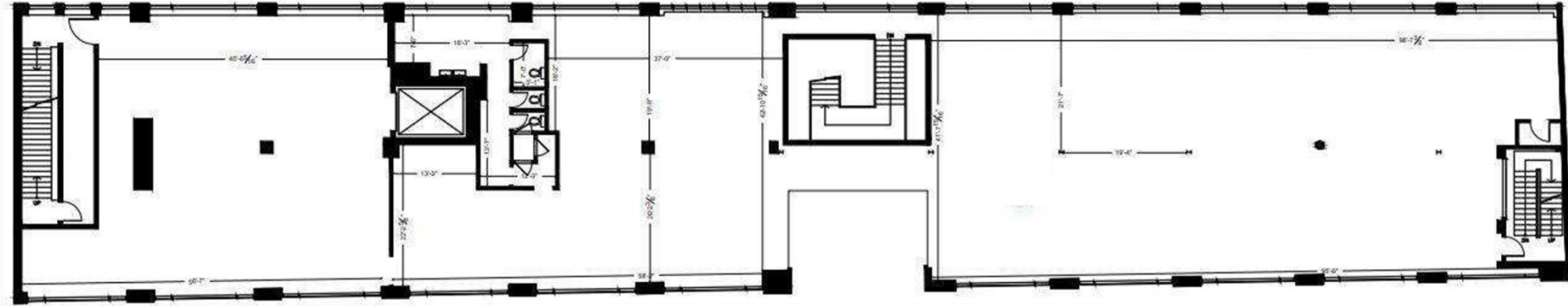
Main Floor



FLOOR PLAN



Second Floor



FLOOR PLAN

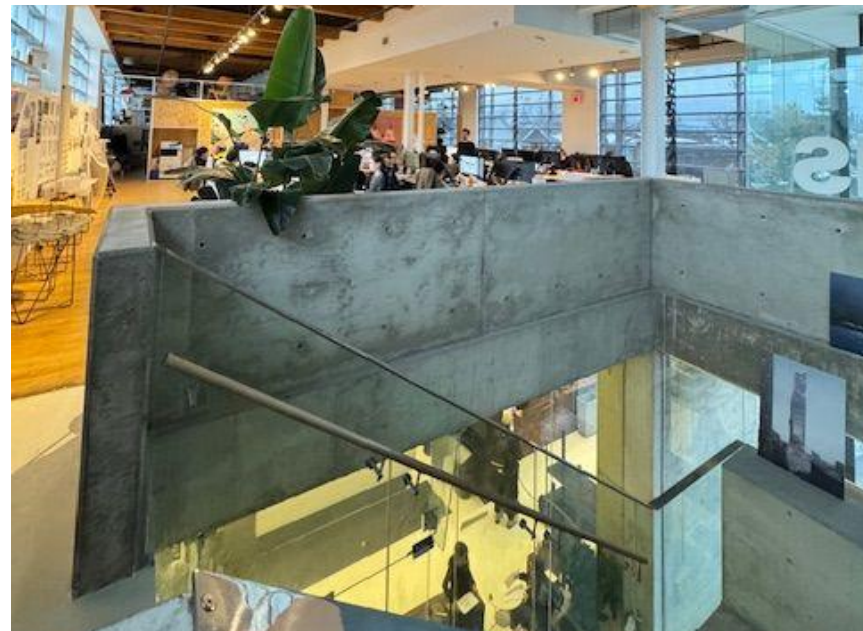
Main Floor



BASEMENT UNIT PICTURES

950 DUPONT STREET | FOR LEASE

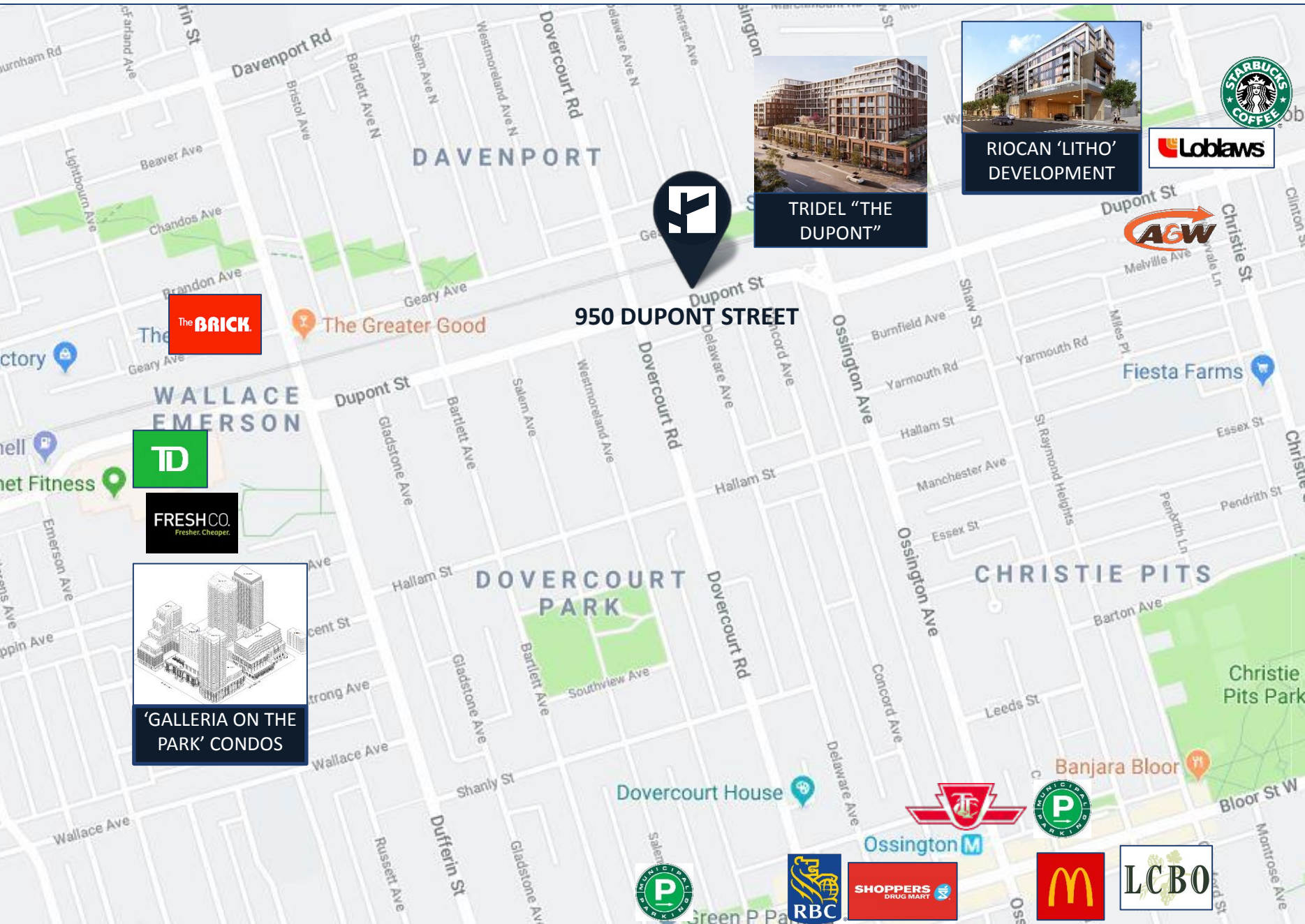
Second Floor



950 DUPONT STREET | FOR LEASE



BASEMENT UNIT PICTURES



AREA MAP

950 DUPONT STREET | FOR LEASE

CONTACT

TIM NOVAK*

Senior Vice President

416.703.6621 Ext. 246

Tim.novak@cbmetcom.com



370 KING STREET WEST, UNIT 802

TORONTO, ON | M5V 1J9

416.703.6621

WWW.CBMETCOM.COM