



## 873 sf retail lease available on busy Woolwich Street

**Chris Valeriote**  
Sales Representative, Principal  
+1 226 366 9014  
chris.valeriote@avisonyoung.com

**Mason Sinkeldam**  
Sales Representative  
+1 226 366 9070  
mason.sinkeldam@avisonyoung.com



## Property details

Fantastic retail opportunity on Guelph's busy main artery. The unit is fully built-out and features entrances both on Woolwich as well as off the rear parking lot.

CC zoning allows for a wide array of permitted uses, including Day Care Centre. See following page for permitted uses.



**873 sf**  
Available space



**Common**  
Parking type



**Immediate access**  
Public transit



**CC**  
Zoning



**Available**  
Signage



**\$16.50 psf**  
Asking net rate



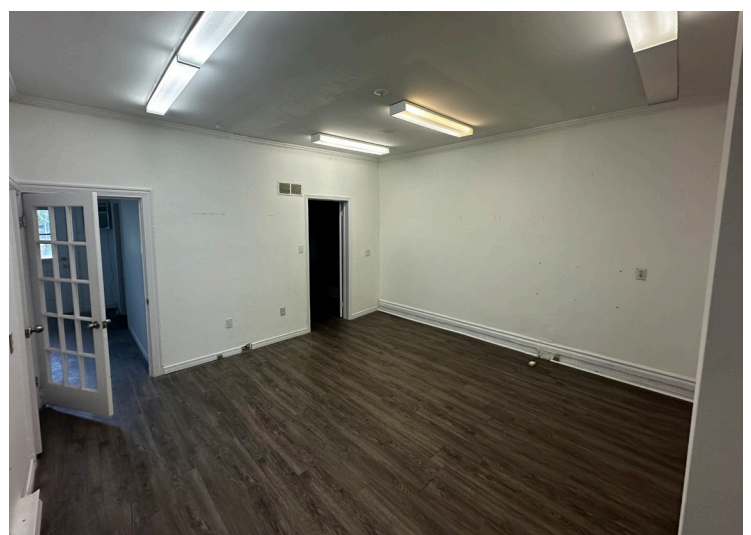
**\$9.15 psf**  
Additional rent

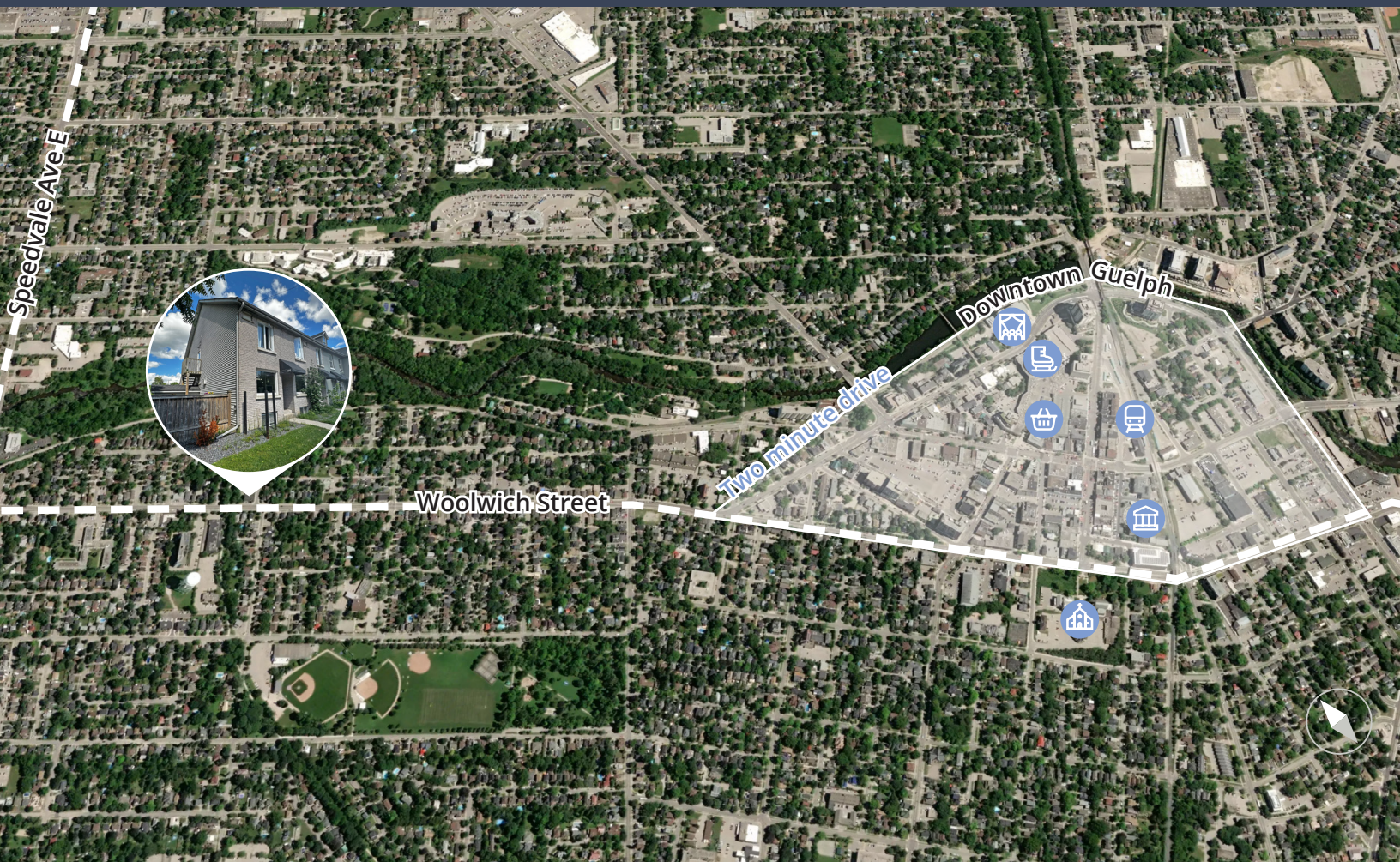
**153,809** Population of Guelph

**167,685** Daytime Population

**\$123,171** Avg. Household Income

**38.3** Median Age





## Permitted uses

### CC Zone

- Live-work unit
- Mixed-use building
- Convenience store
- Day care centre
- Food vehicle
- Restaurant, take-out
- Service establishment
- Accessory use (in accordance with Section 4.21)
- Outdoor display and sales area

## Get more information

### Chris Valeriote

Sales Representative, Principal

+1 226 366 9014

[chris.valeriote@avisonyoung.com](mailto:chris.valeriote@avisonyoung.com)

### Mason Sinkeldam

Sales Representative

+1 226 366 9070

[mason.sinkeldam@avisonyoung.com](mailto:mason.sinkeldam@avisonyoung.com)

**Avison Young** Commercial Real Estate Services, LP, Brokerage  
231 Shearson Crescent, Suite 102, Cambridge ON N1T 1J5  
T +1 226 366 9090 F +1 866 541 9755

