

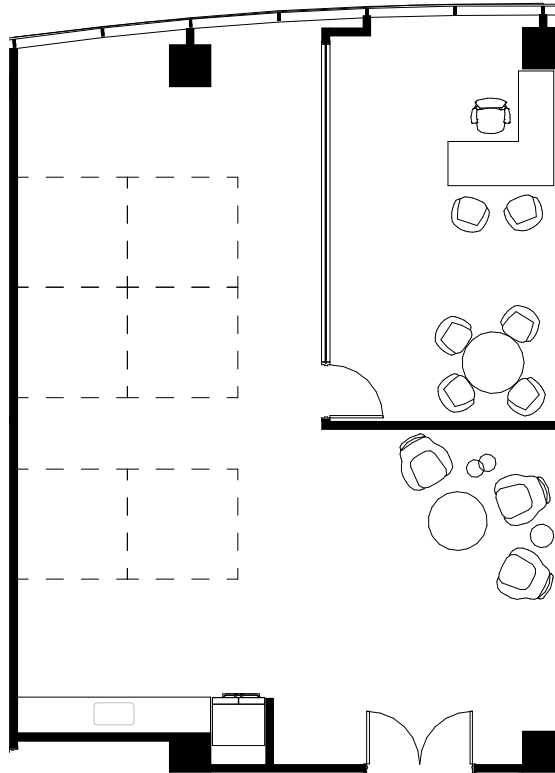
3 Hutton Centre

Santa Ana, CA

Suite 650

~1,596 RSF

Hypothetical Spec Suite



Leasing Agents:

ANDREW ROBBEN

Managing Director
CA RE Lic. #01372891
t 949-608-2073
andrew.robben@nrmk.com

GREG PUCCINELLI

Senior Managing Director
CA RE Lic. #01215693
t 949-608-2036
greg.puccinelli@nrmk.com

GEORGE THOMSON

Executive Managing Director
CA RE Lic. #00947200
t 949-608-2037
george.thomson@nrmk.com

RAYLEE OVERTON

Transaction Manager
CA RE Lic. #02082860
t 949-608-2012
raylee.overton@nrmk.com

18401 Von Karman Avenue, Suite 150, Irvine, CA 92612 | Corporate License #01355491

The distributor of this communication is performing acts for which a real estate license is required. The information contained herein has been obtained from sources deemed reliable but has not been verified and no guarantee, warranty or representation, either express or implied, is made with respect to such information. Terms of sale or lease and availability are subject to change or withdrawal without notice.