

35 East Elizabeth Avenue Bethlehem, PA 18018

Office Space in Downtown Bethlehem, PA

Located in the heart of Downtown Bethlehem, this 5 story professional office/medical building is the perfect new home for your business!

Offering a range of leasing choices from shared office spaces to private suites, all featuring top amenities.

- Prime downtown location
- Off-street parking lot
- Office and medical intensive layout
- Professional & serene work environment



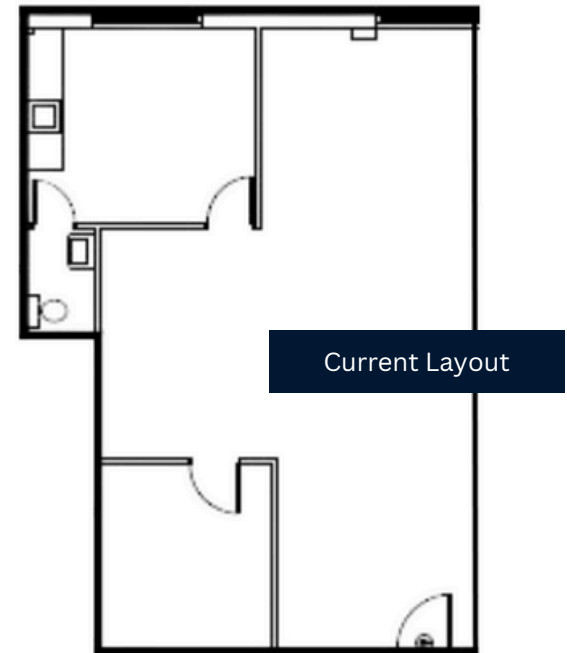
Herald Property Management
212-516-1100 | office@heraldmgmt.com

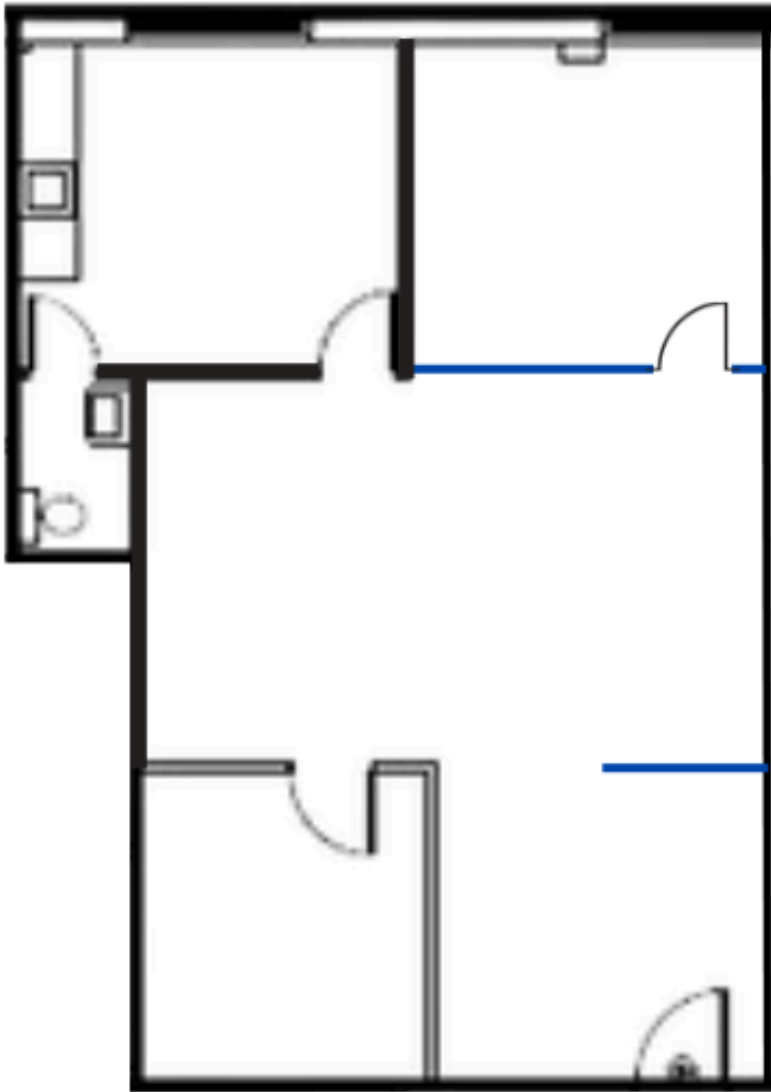
Suite 309

The suite currently features an open floor plan with an en-suite bathroom, a break room, and an office. The current design is perfect for collaborative workspaces.

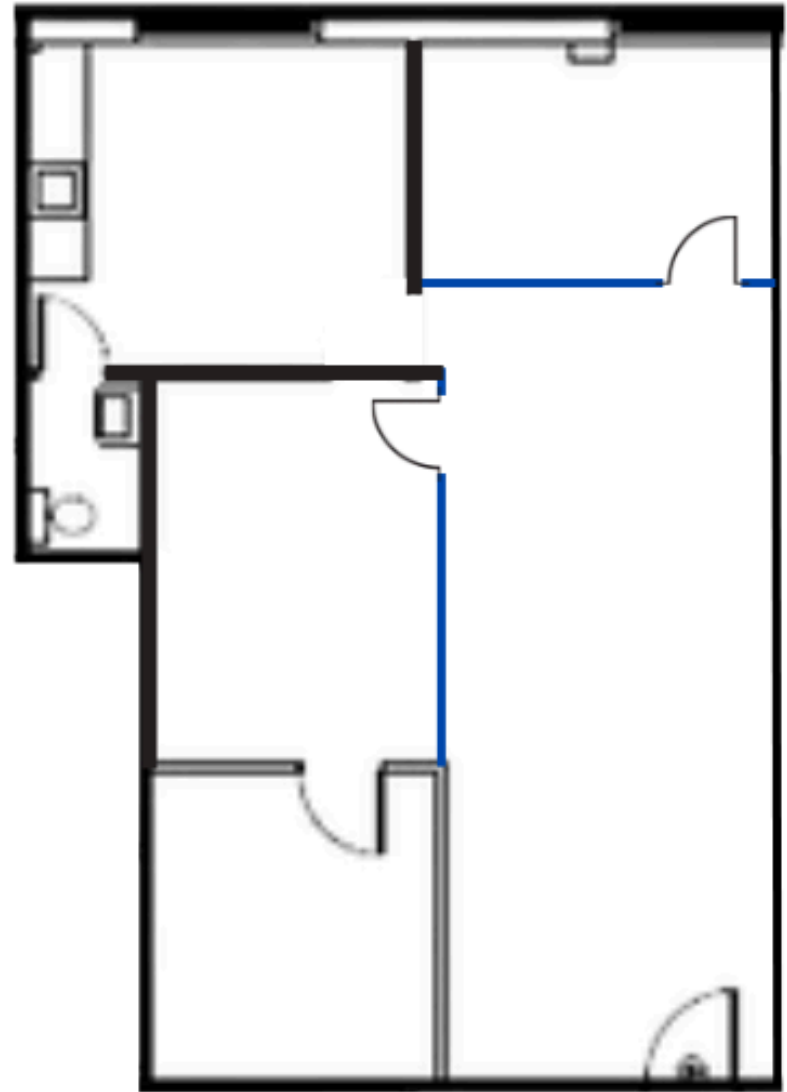
Tenant-specific renovations for a fit-out are available to cater to your business needs, with various layout options offered below as suggestions.

Fit-outs and rental terms are negotiable.





Suggested Layout #1



Suggested Layout #2