

# PENN 2

24TH FLOOR PRE-BUILT + FURNISHED SUITES

**VORNADO**  
REALTY TRUST

# PENN 2: PRE-BUILT + FURNISHED SUITES

## 24th Floor Plan

**Suite D**  
12,116 RSF  
42 people

**Suite E**  
7,858 RSF  
26 people

**Suite F**  
5,284 RSF  
20 people

**Suite G**  
7,510 RSF  
30 people



**Suite H**  
9,968 RSF  
43 people

# PENN 2: PRE-BUILT SUITES

## 24th Floor Plan - Option to Combine Suites E+F and Suites G+H

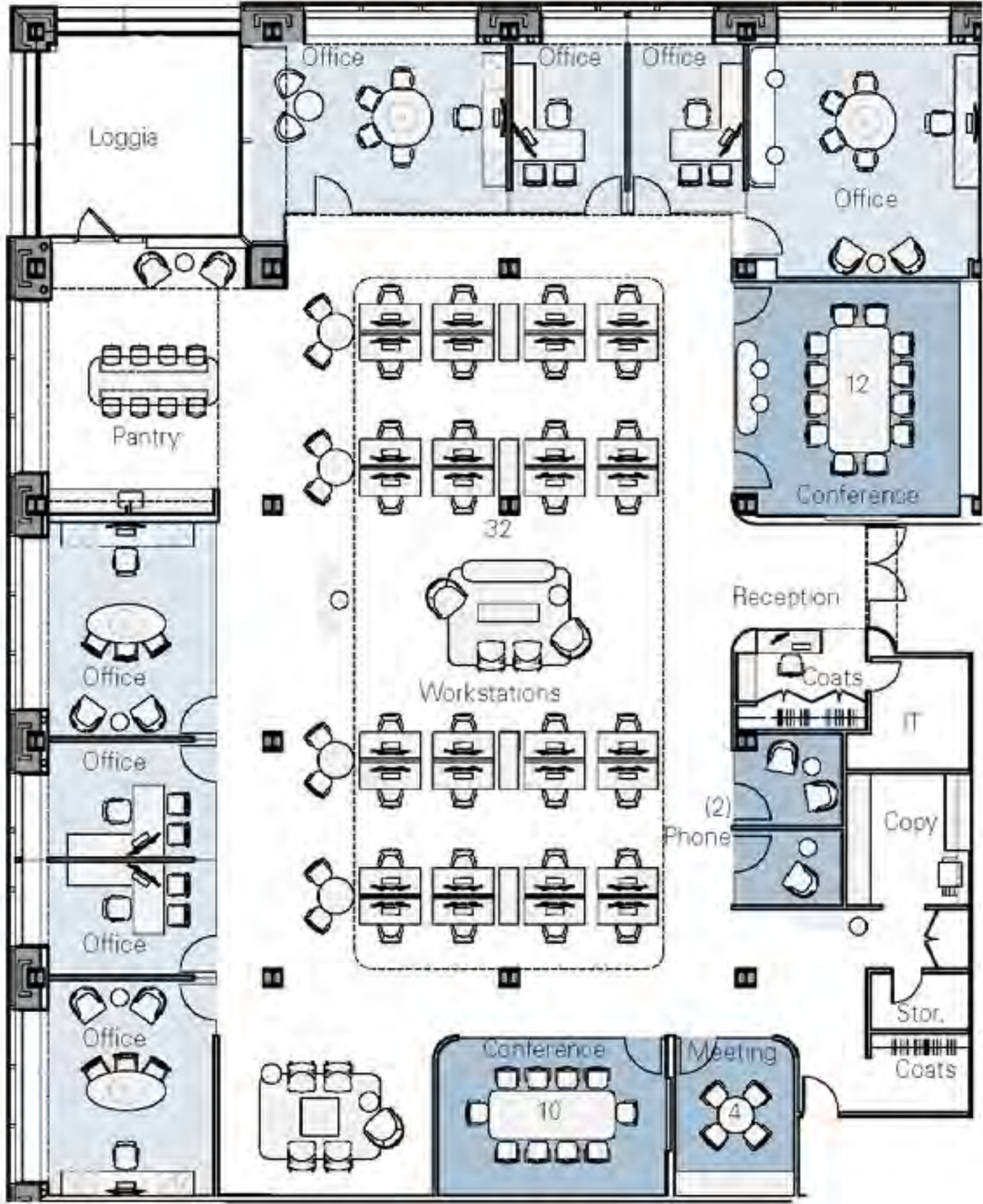
**Suite D**  
12,116 RSF  
42 people

**Suites E+F**  
13,142 RSF  
46 people

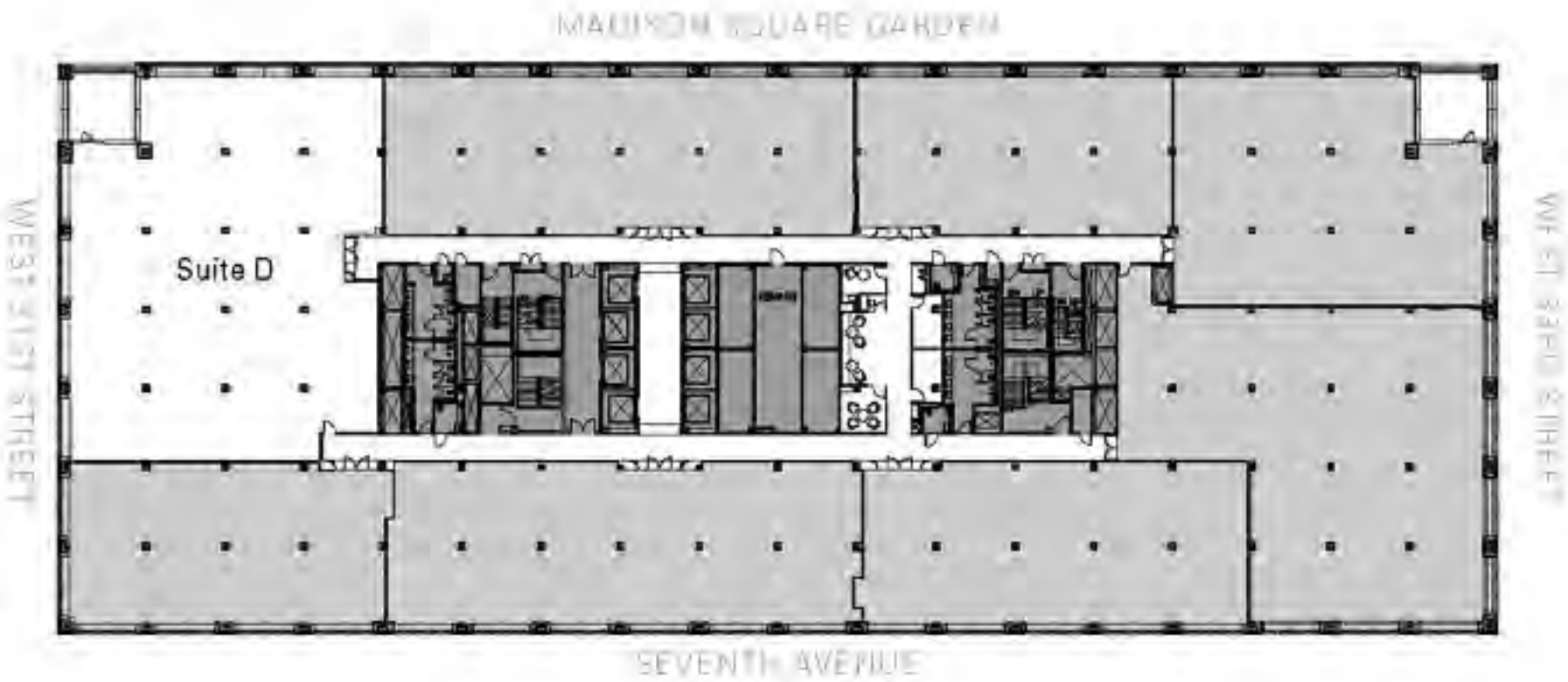
**Suites G+H**  
17,478 RSF  
76 people



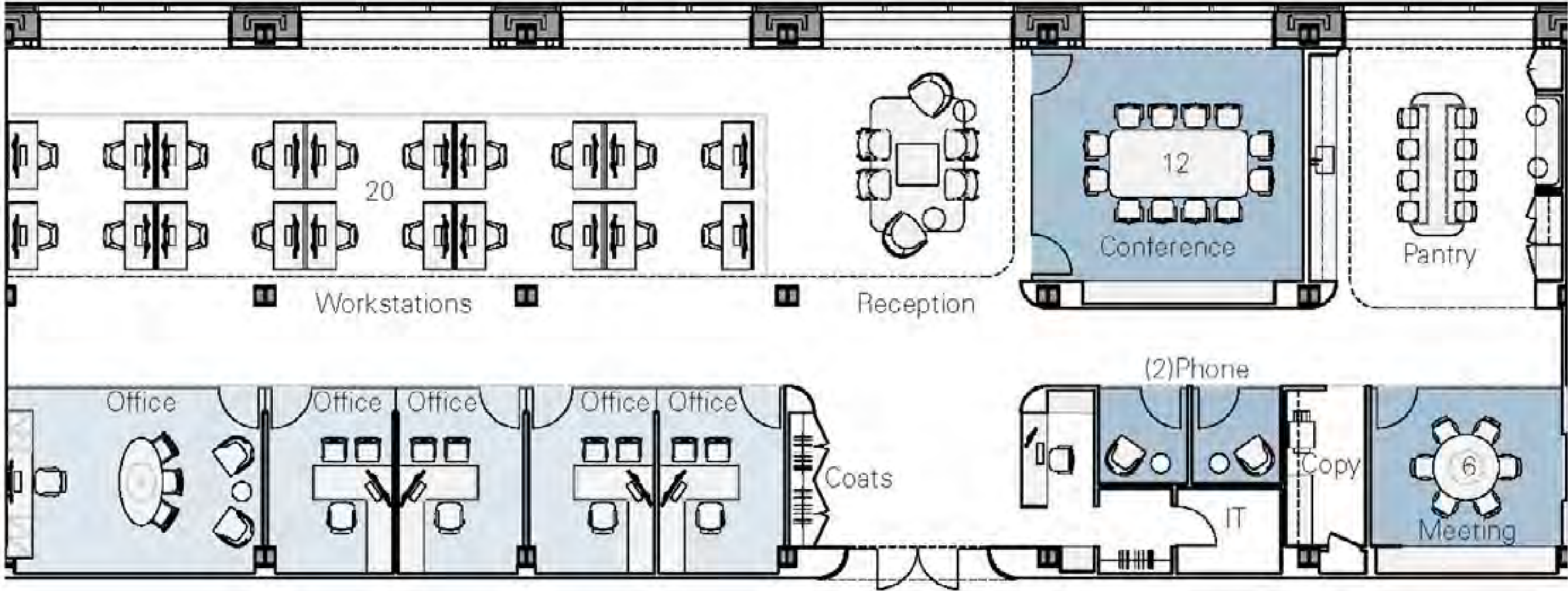
# SUITE D: 12,116 RSF



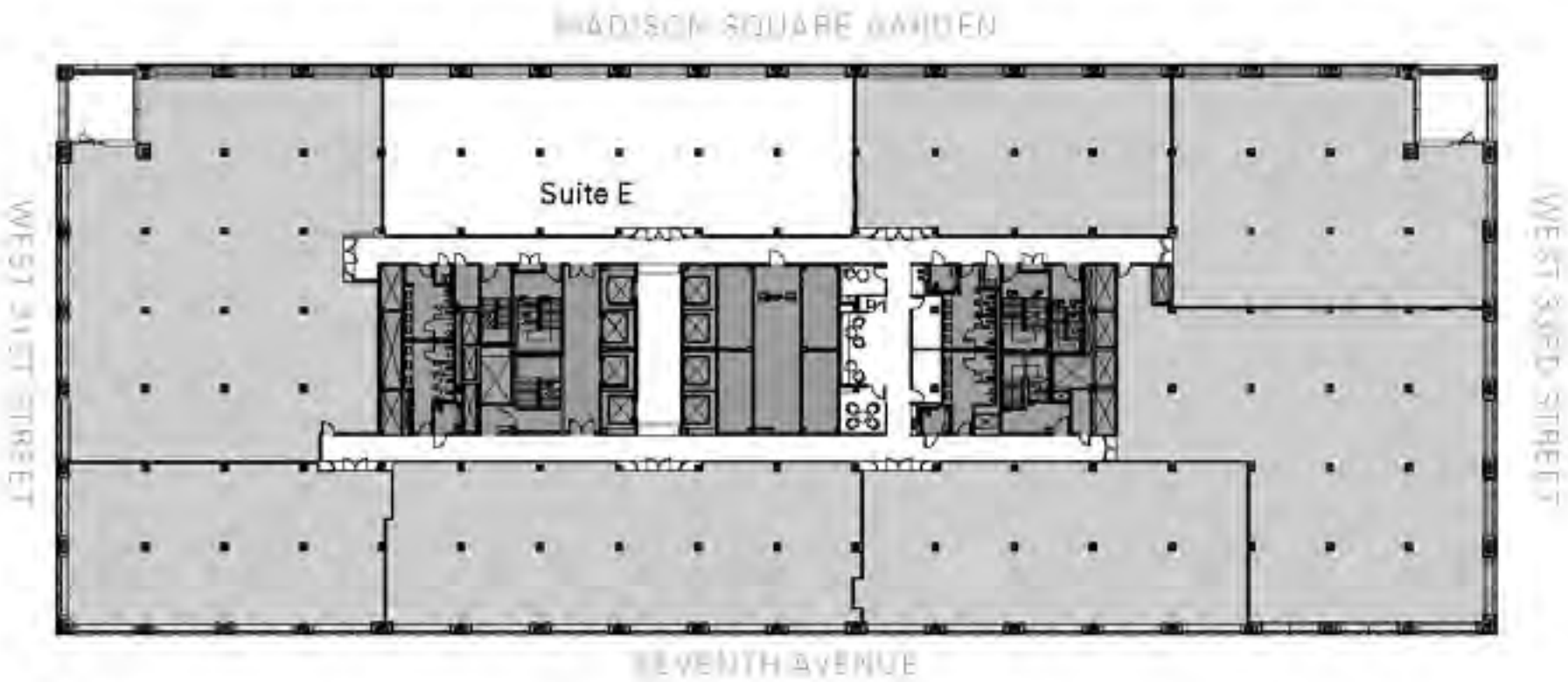
Suite D (12,116 RSF)	
Private Offices	3
Receptionist	1
Workstations (30"x72")	32
<b>Total</b>	<b>42</b>
Meeting Rooms	3
Phone Rooms	2



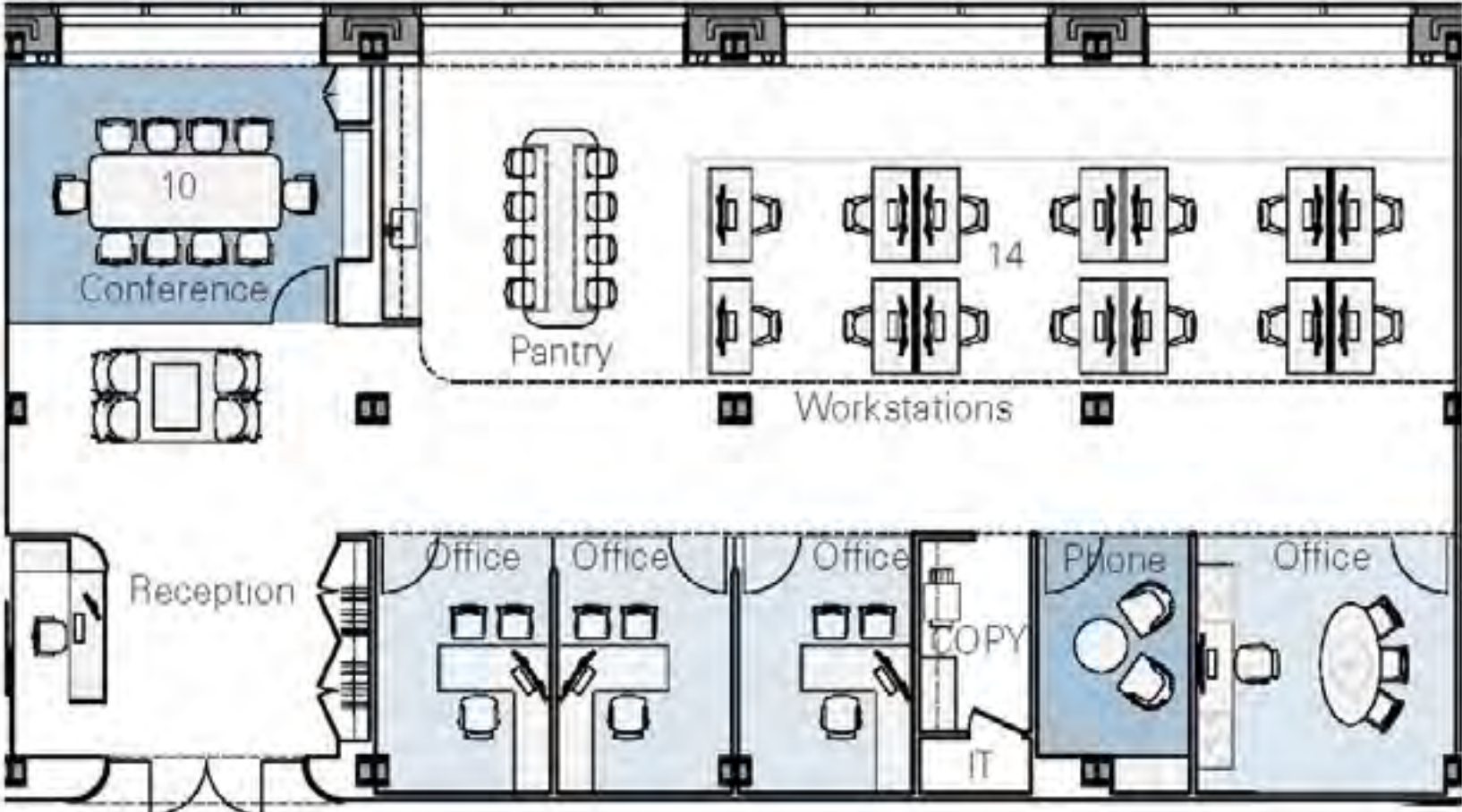
# SUITE E: 7,858 RSF



Suite E (7,858 RSF)	
Private Offices	5
Receptionist	1
Workstations (30"x72")	20
<b>Total</b>	<b>26</b>
Meeting Rooms	2
Phone Rooms	2



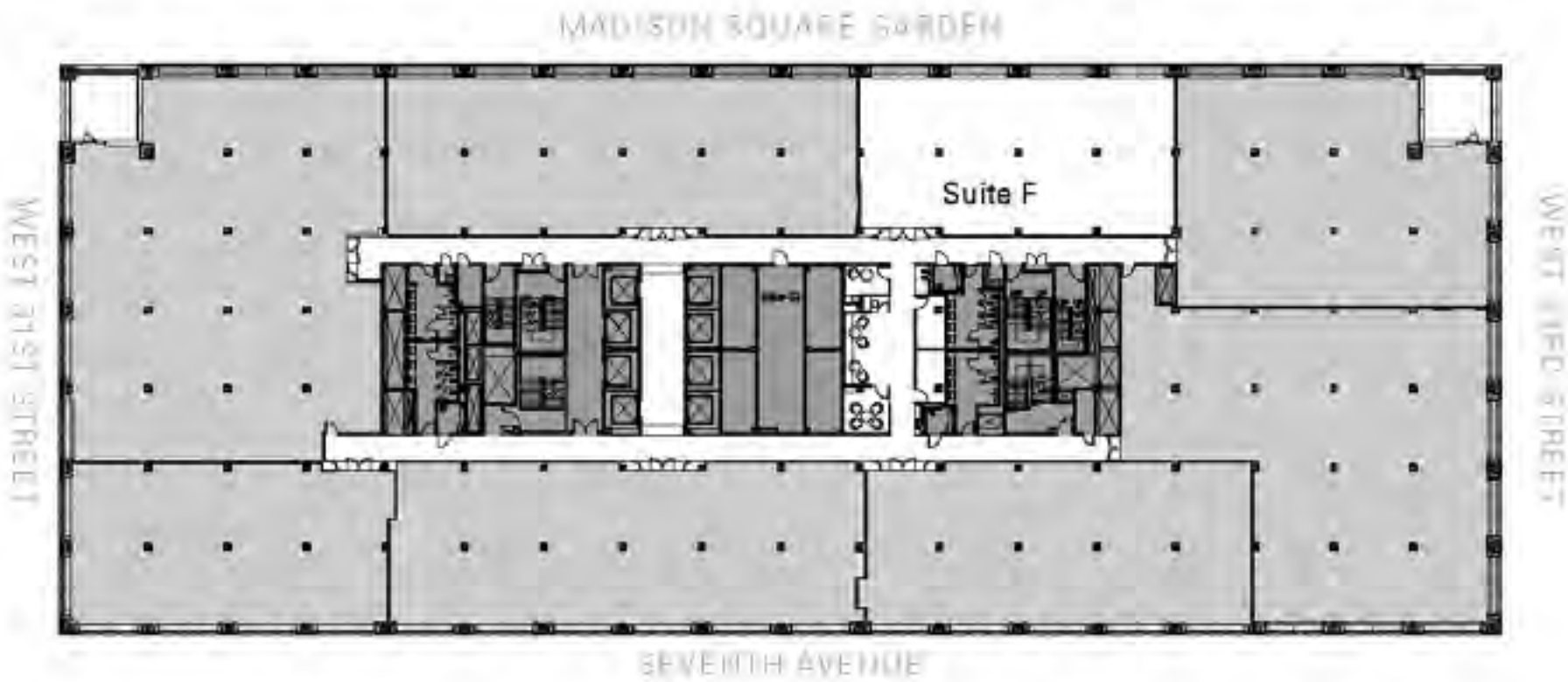
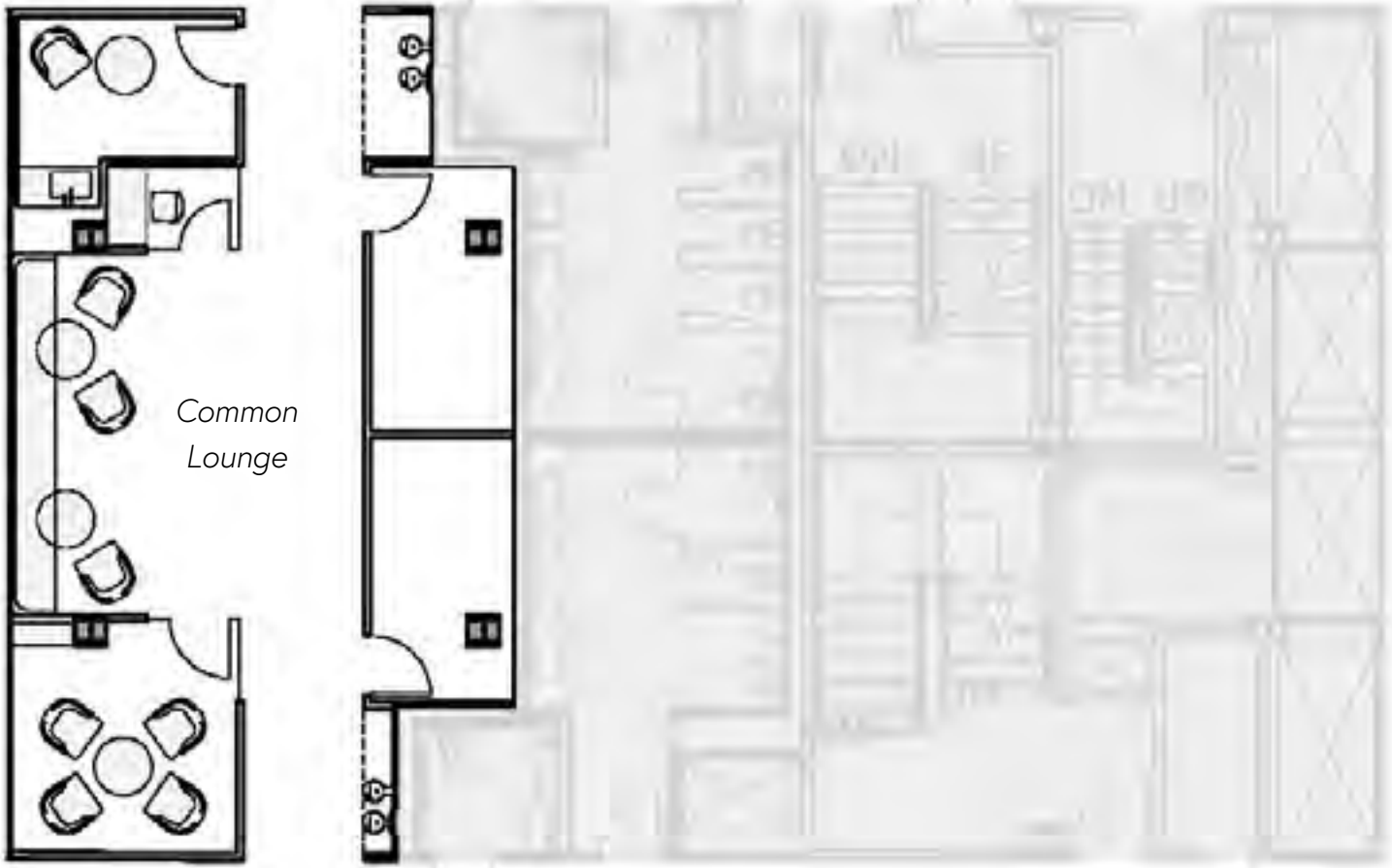
# SUITE F: 5,284 RSF



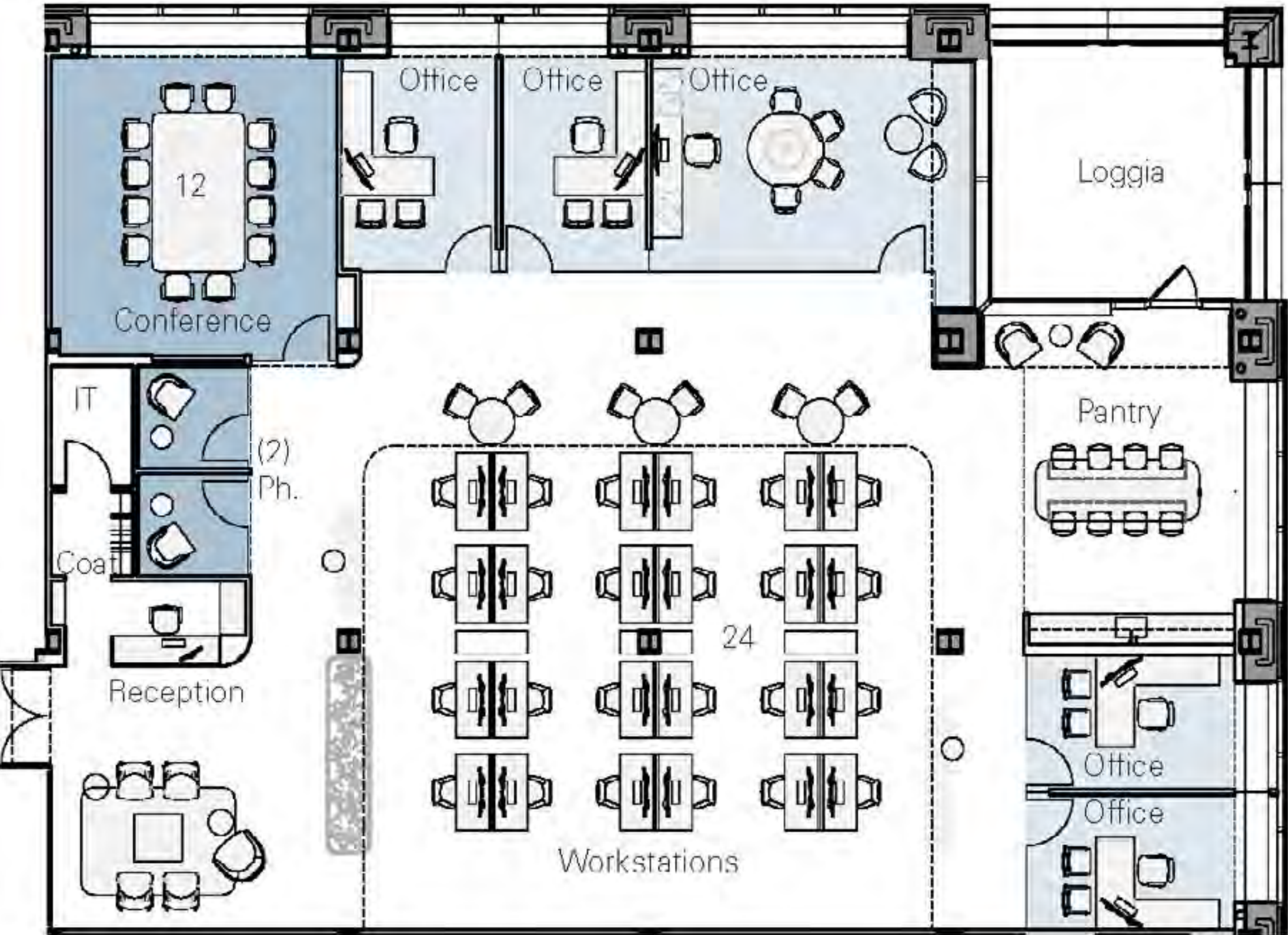
Suite F (5,284 RSF)	
Private Offices	4
Receptionist	1
Workstations (30"x72")	14
<b>Total</b>	<b>20</b>

Meeting Room	1
Phone Room	1



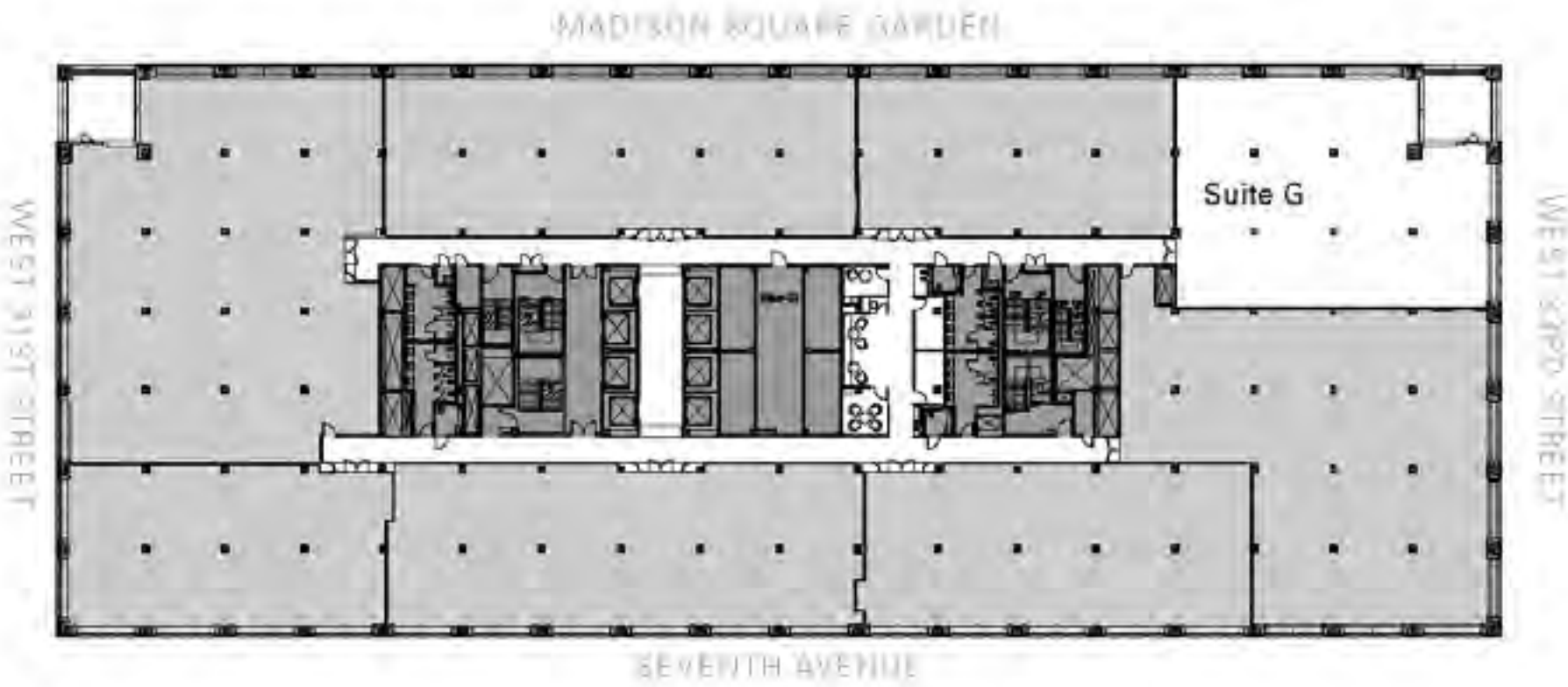
# SUITE G: 7,510 RSF



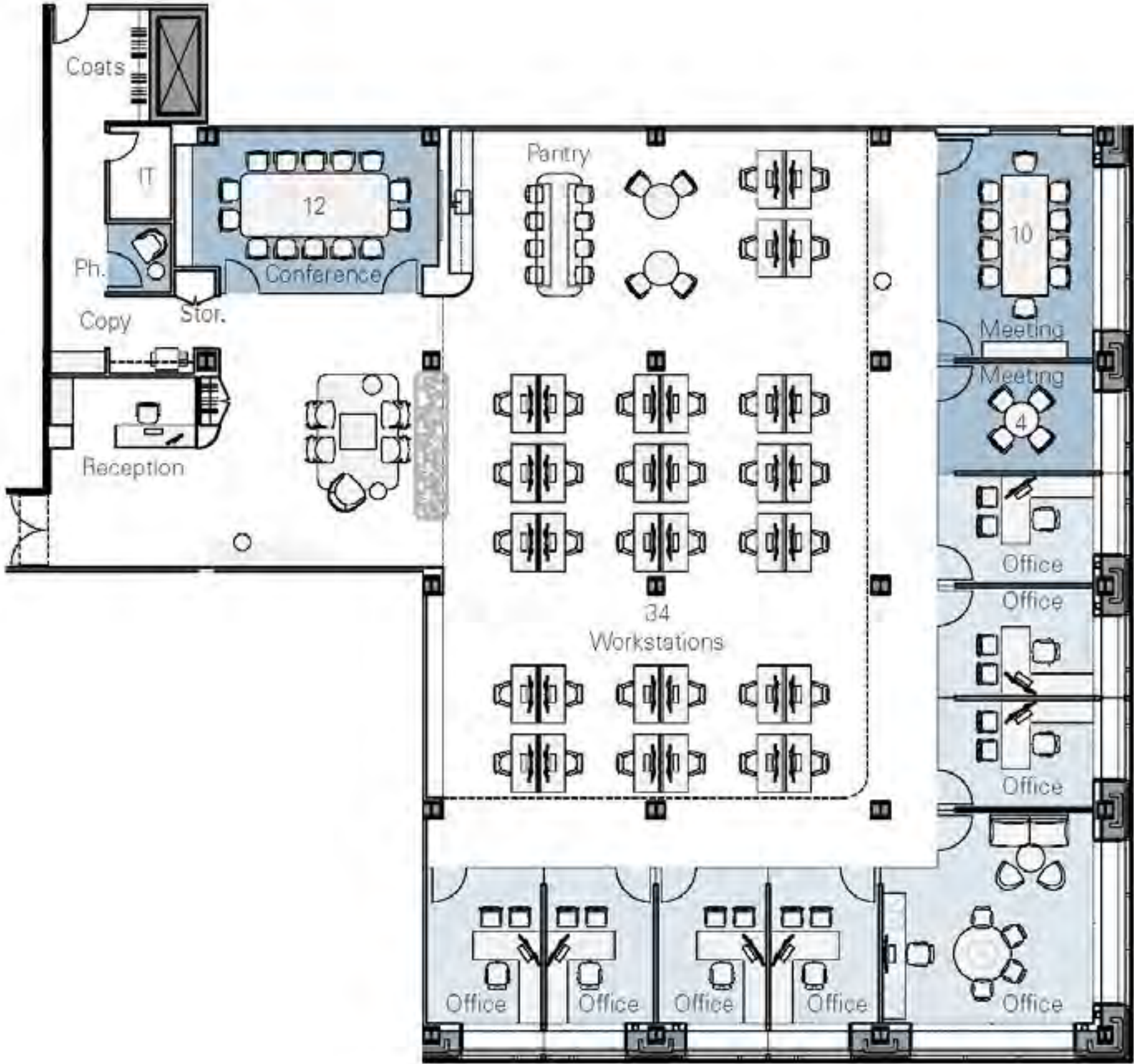
Suite G (7,510 RSF)	
Private Offices	5
Receptionist	1
Workstations (30"x72")	24
<b>Total</b>	<b>30</b>

Meeting Room	1
Phone Rooms	2



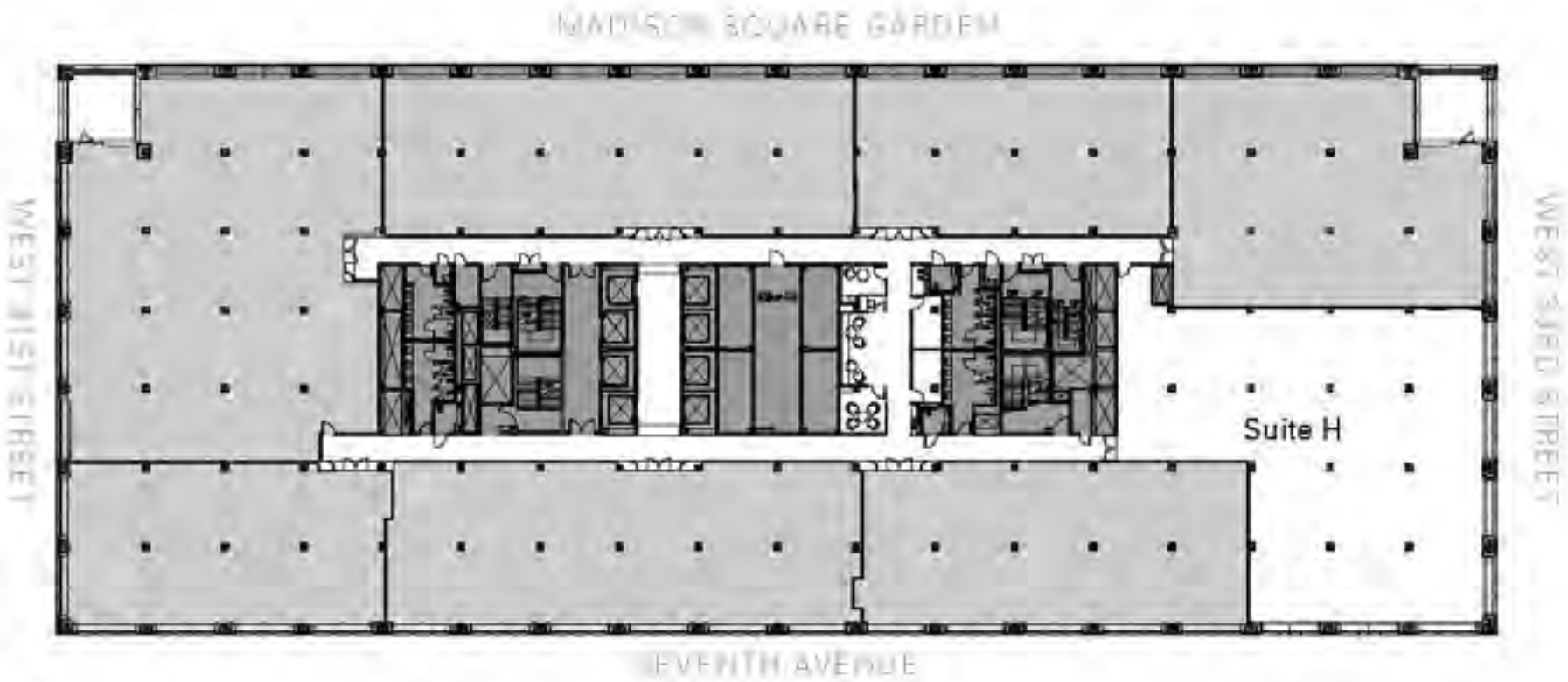
# SUITE H: 9,968 RSF



Suite H (9,968 RSF)	
Private Offices	8
Receptionist	1
Workstations (30"x72")	34
<b>Total</b>	<b>43</b>

Meeting Rooms	3
Phone Room	1



Elevator Lobby



Reception



Meeting Room



Pantry



Open Work Area



Open Work Area



Open Work Area + Private Offices



Pantry and Meeting Room



Common Lounge & Meeting Room  
*Accessible to all Suites*



Common Phone Rooms  
*Accessible to all Suites*





**Bruce Mosler**

Chairman, Global Brokerage  
Bruce.Mosler@cushwake.com  
212-841-7900

**Josh Glick**

Executive Vice President  
Director of PENN DISTRICT Leasing  
JGlick@vno.com  
(212) 894-7413

**Josh Kuriloff**

Executive Vice Chair  
josh.kuriloff@cushwake.com  
212 841 7894

**Jared Silverman**

Senior Vice President  
JSilverman@vno.com  
(212) 894-7458

**Matthias Li**

Executive Managing Director  
matthias.li@cushwake.com  
(212) 841-7712

**Anthony Cugini**

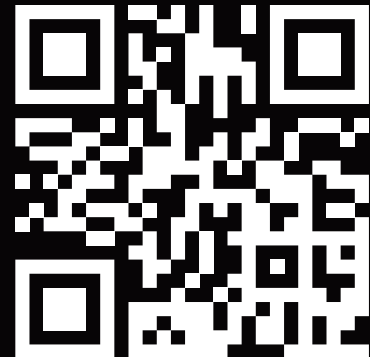
Managing Director  
ACugini@vno.com  
(212) 894-7425

**Theodora Livadiotis**

Senior Director  
theodora.livadiotis@cushwake.com  
212-841-7648

**Eric Hazen**

Senior Director  
eric.hazen@cushwake.com  
212-841-7809



[www.vnopenn2.com](http://www.vnopenn2.com)

Scan to View the  
PENN 2 Video Online