

100 Lafayette Street

Located Next to Canal & Broadway

Sido

NEW YORK REAL ESTATE



SIZE
RATE
TERM
AVAILABILITY

4,000 RSF
Upon Request
Negotiable
Immediate

NOTES

- Front Facing Corner Office
- Landlord to modify or build-out
- Partial 5th Floor with Private Restrooms
- 24/7 Doorman
- One block from all transit lines
- Space is currently being demolished for an open layout.

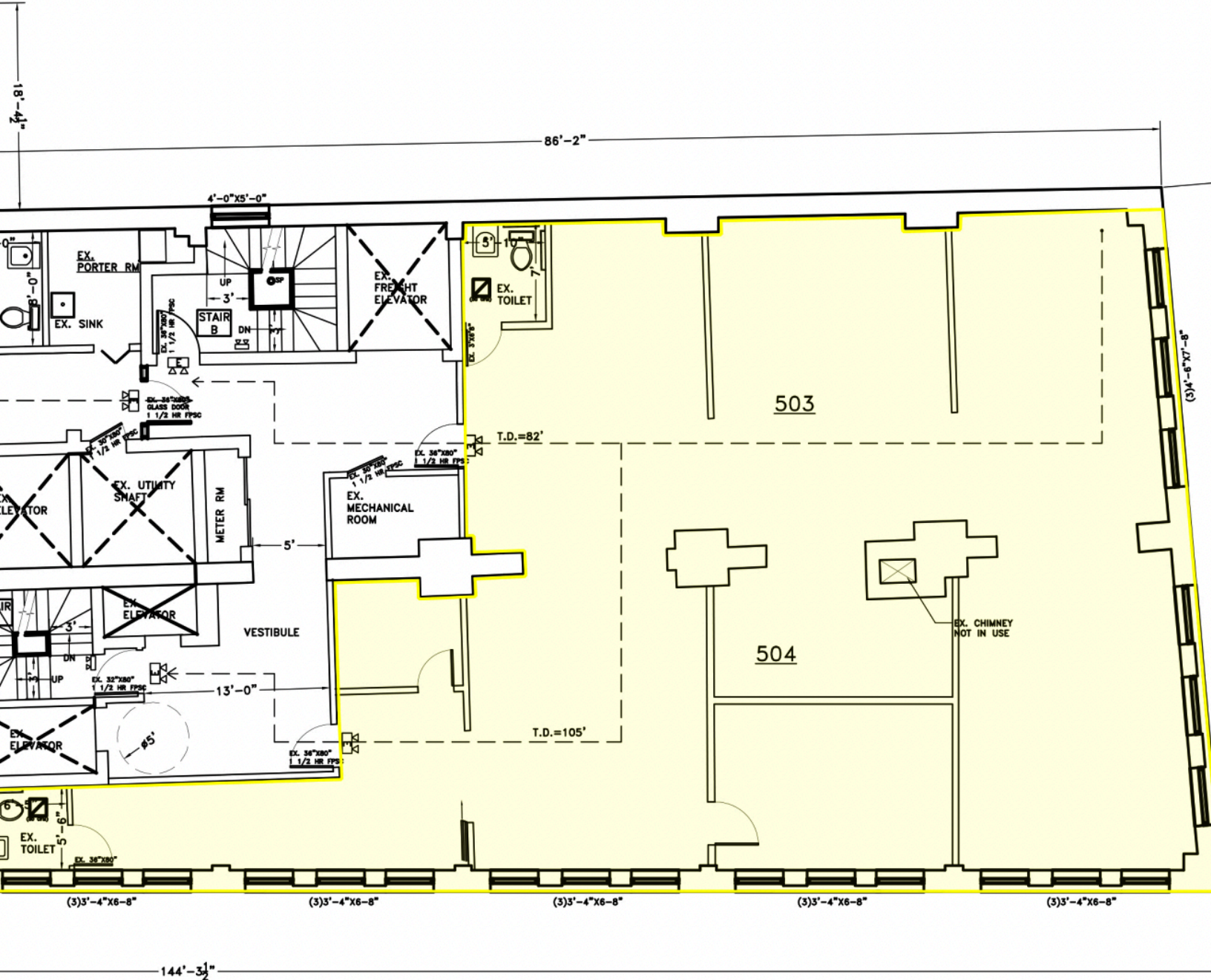


John Akleh
Jakleh@sidonyre.com
917-594-7641

147 W 35th Street, #402
New York, NY 10001
www.sidonyre.com

100 Lafayette Street

Partial 5th Floor



FLOOR PLAN

1/16" = 1'-0"