

# STANDALONE CREATIVE OFFICE BUILDING FOR LEASE

± 5,600 SF

3003 PENNSYLVANIA AVE  
SANTA MONICA, CA 90404





# Property Information

- PREMISES** ± 5,600 RSF
- RENT** \$3.95/SF Modified Gross
- OCCUPANCY** Immediate
- TERM** 3 - 5 Years
- FEATURES**
- Standalone Creative Office Building
  - 4 Offices, Conference Room, Open Area & Kitchen
  - Glass Roll Up Doors
  - Polished Concrete Throughout
  - Beautiful Space With Ample Natural Light
  - Fantastic West Side Location
  - 10 Min Walk From Expo Line (Bergamont Station)
  - Easy Access to 10 and 405 Freeways

**CONTACTS**

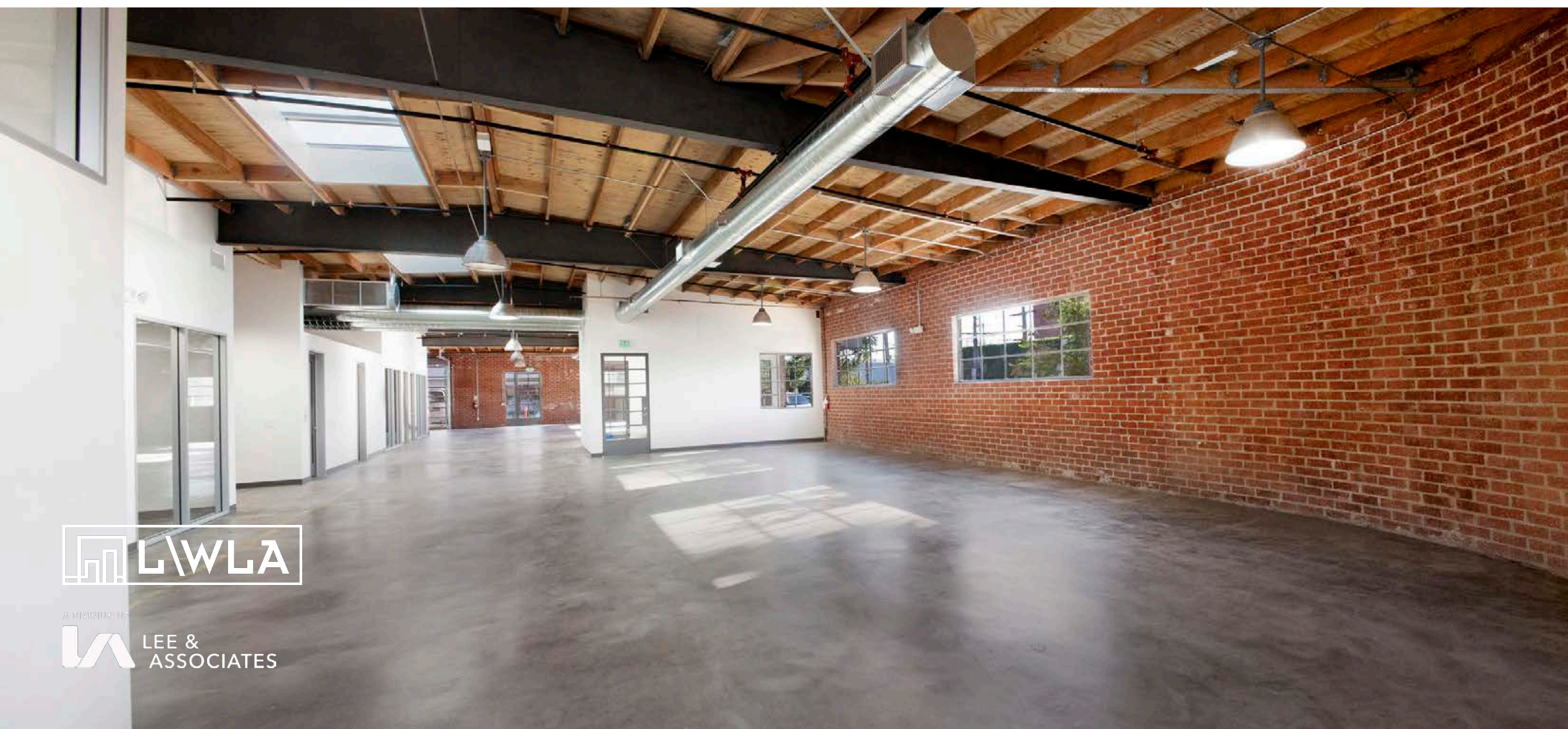
<b>Aleks Trifunovic, SIOR</b> 310.899.2721 atrifunovic@leewestla.com BKR DRE 01363109	<b>Tommy Isola</b> 310.899.2709 tisola@leewestla.com AGT DRE 01974024
<b>Keith Fielding</b> 310.899.2719 kfielding@leewestla.com AGT DRE 01729915	<b>Tibor Lody, SIOR</b> 310.899.2720 tlody@leewestla.com AGT DRE 01261129



1508 17th Street, Santa Monica, CA | 310.899.2700

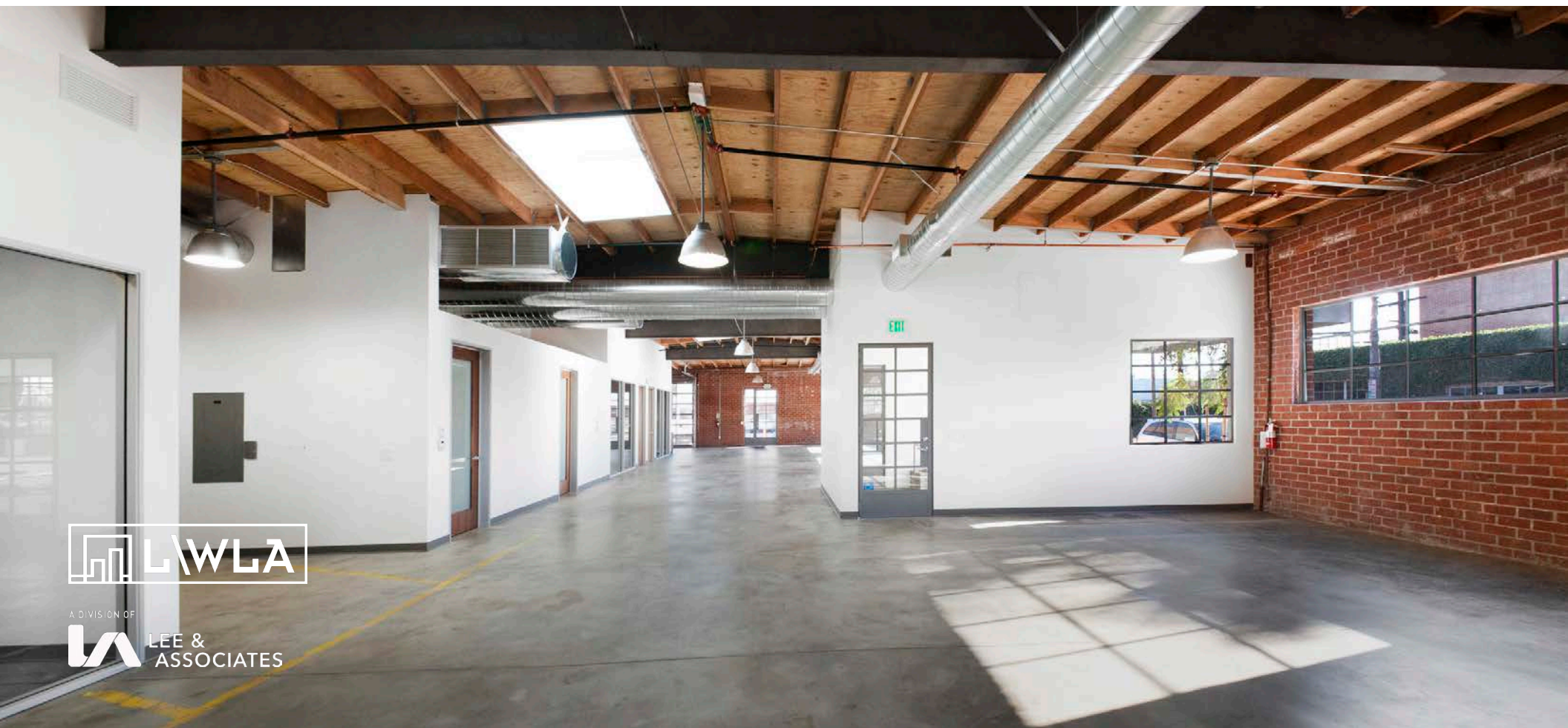
WWW.LEEWESTLA.COM | DRE 01222000

No warranty or representation is made to the accuracy of the foregoing information.  
Terms of sale or lease are subject to change or withdrawal without notice.



A DIVISION OF

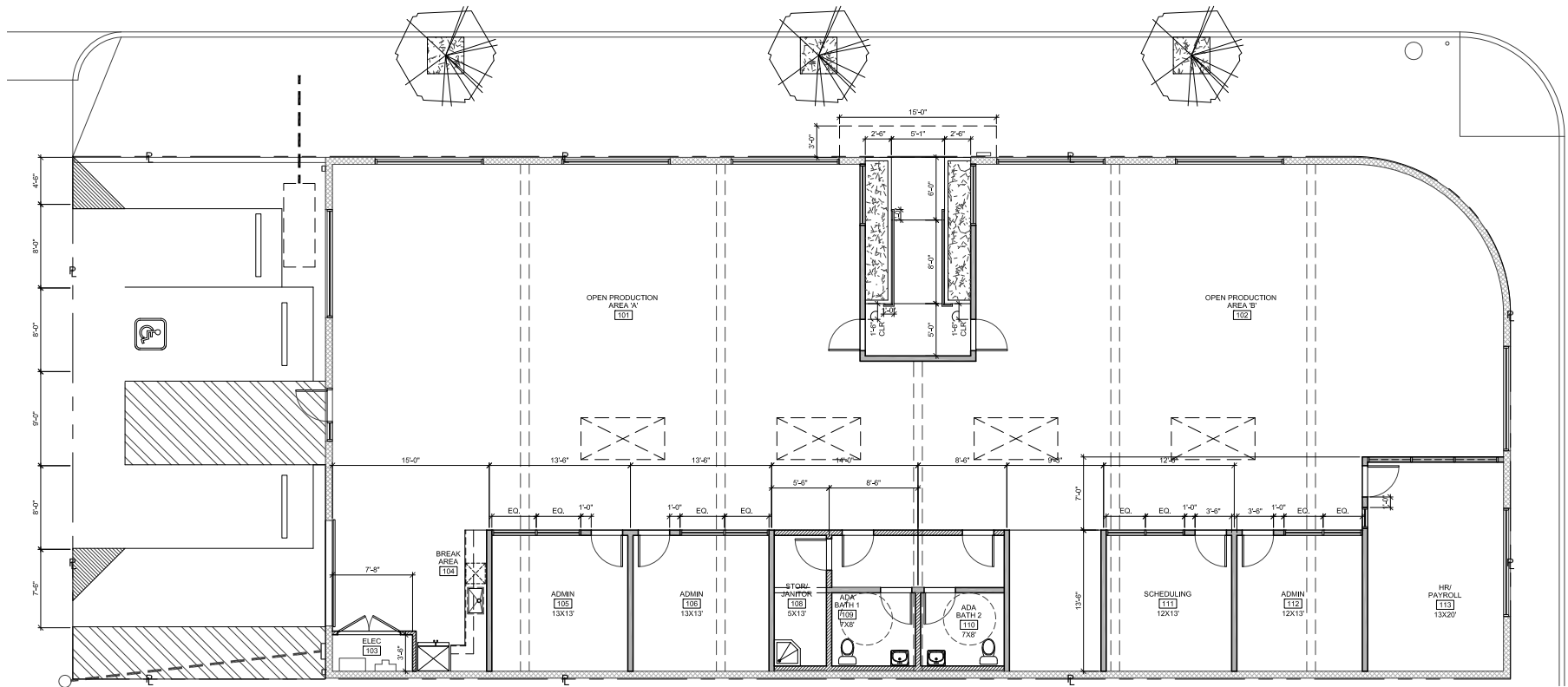




 LWLA

A DIVISION OF  
 LEE & ASSOCIATES

# Floor Plan



A DIVISION OF



# Aerial Photo



A DIVISION OF  
**LEE & ASSOCIATES**





**Aleks Trifunovic, SIOR**

Principal  
310.899.2721  
atrifunovic@leewestla.com  
BKR DRE 01363109

**Tommy Isola**

Principal  
310.899.2709  
tisola@leewestla.com  
AGT DRE 01974024

**Keith Fielding**

Principal  
310.899.2719  
kfielding@leewestla.com  
AGT DRE 01729915

**Tibor Lody, SIOR**

Principal  
310.899.2720  
tlody@leewestla.com  
AGT DRE 01261129

**Adam Levine**

Senior Associate  
310.899.2703  
alevine@leewestla.com  
AGT DRE 02104830

Lee & Associates Los Angeles West, Inc.  
1508 17th Street, Santa Monica, CA  
310.899.2700 | www.leewestla.com | DRE 01222000

No warranty or representation is made to the accuracy of the foregoing information.