

705-707

PIER VIEW WAY

Oceanside, CA 92054



COASTAL OFFICE SUITE FOR LEASE



CHRISTIAN THOMPSON
760.481.1016 | BRE #02105771
cthompson@lee-associates.com

TRENT FRANCE
760.929.7838 | BRE #00984842
tfrance@lee-associates.com

JEFF ABRAMSON
760.929.7835 | BRE #00956805
jabramson@lee-associates.com



BUILDING HIGHLIGHTS

*Under New ownership *Building rehab completed

- 0.5 miles from the Beach & the Oceanside Pier
- Across from City Hall & Oceanside Art Museum
- On Site Parking

SUITE A & SUITE B

- 500 RSF Available
- Lease Rate: \$1,600/mo + Expenses (est. \$509)
- Available with 60 Day Notice

SUITE E

- 77 RSF Available
- Lease Rate: \$300/mo

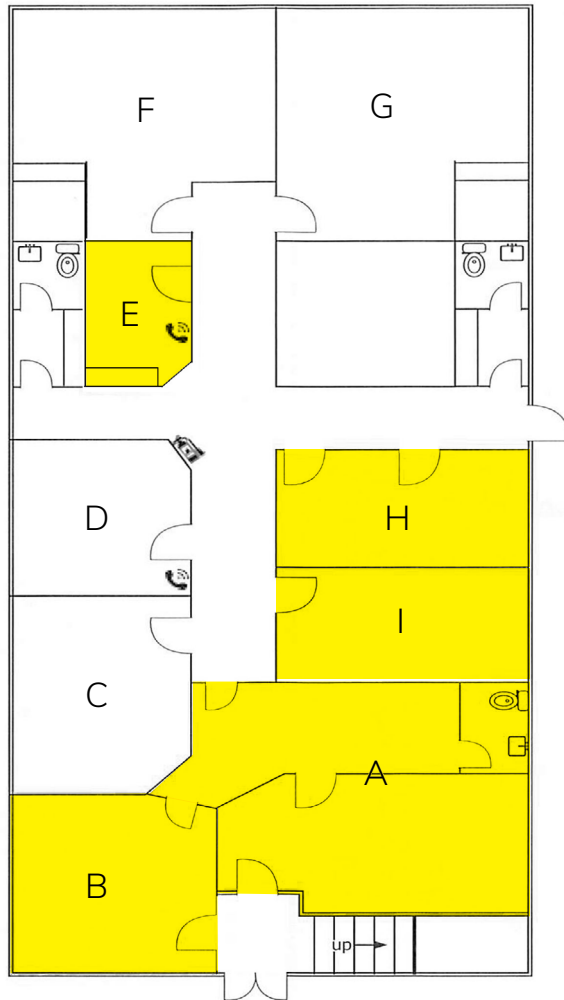
SUITE I

- 157 RSF Available
- Lease Rate: \$565/mo + Expenses (est. \$160)


SUITE H

- 140 RSF Available
- Lease Rate: \$504/mo + Expenses (est. \$142)
- Available with 60 Day Notice

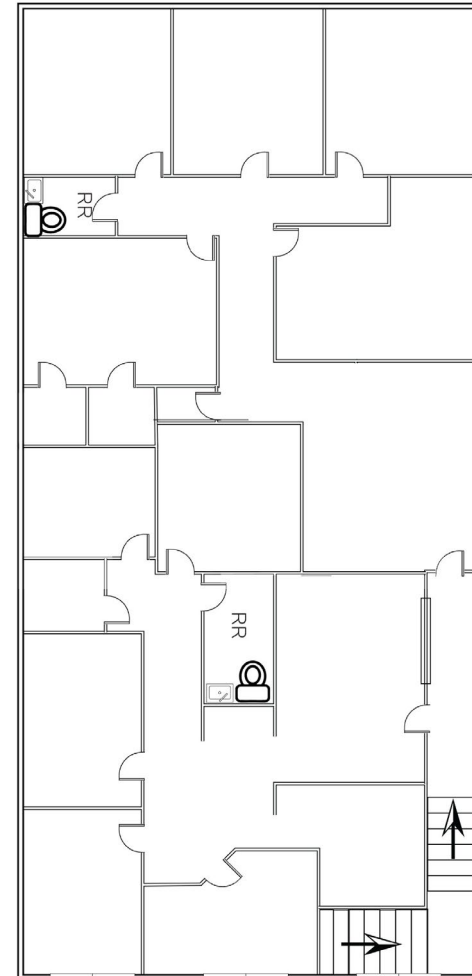
FIRST FLOOR



KEY

 Available Now

SECOND FLOOR



SITE LOCATION

705-707 PIER VIEW WAY
Oceanside, CA 92054



705-707

PIER VIEW WAY

Oceanside, CA 92054

CHRISTIAN THOMPSON
760.481.1016 | BRE #02105771
cthompson@lee-associates.com

TRENT FRANCE
760.929.7838 | BRE #00984842
tfrance@lee-associates.com

JEFF ABRAMSON
760.929.7835 | BRE #00956805
jabramson@lee-associates.com



COMMERCIAL REAL ESTATE SERVICES

All information furnished regarding property for sale, rental or financing is from sources deemed reliable, but no warranty or representation is made to the accuracy thereof and same is submitted to errors, omissions, change of price, rental or other conditions prior to sale, lease or financing or withdrawal without notice. No liability of any kind is to be imposed on the broker herein.

1902 Wright Place, Suite 180 | Carlsbad, CA 92008 | 760.929.9700 | www.lee-associates.com/sandiegonth