

# 26054 Acero

Mission Viejo, CA 92691

## Property Features

- + Suite 100: ±3,750 SF of first story office
- + Fully furnished “Plug & Play”
- + Mix of private offices and open area
- + Small conference room
- + ±4:1,000 parking ratio
- + Walking distance to retail amenities
- + Extensive landscaping
- + Minutes to the shops at Mission Viejo
- + Close proximity to the 5 freeway

## Contact Us

### Keith Black

Vice President

+1 949 725 8633

keith.black@cbre.com

Lic. 01266477

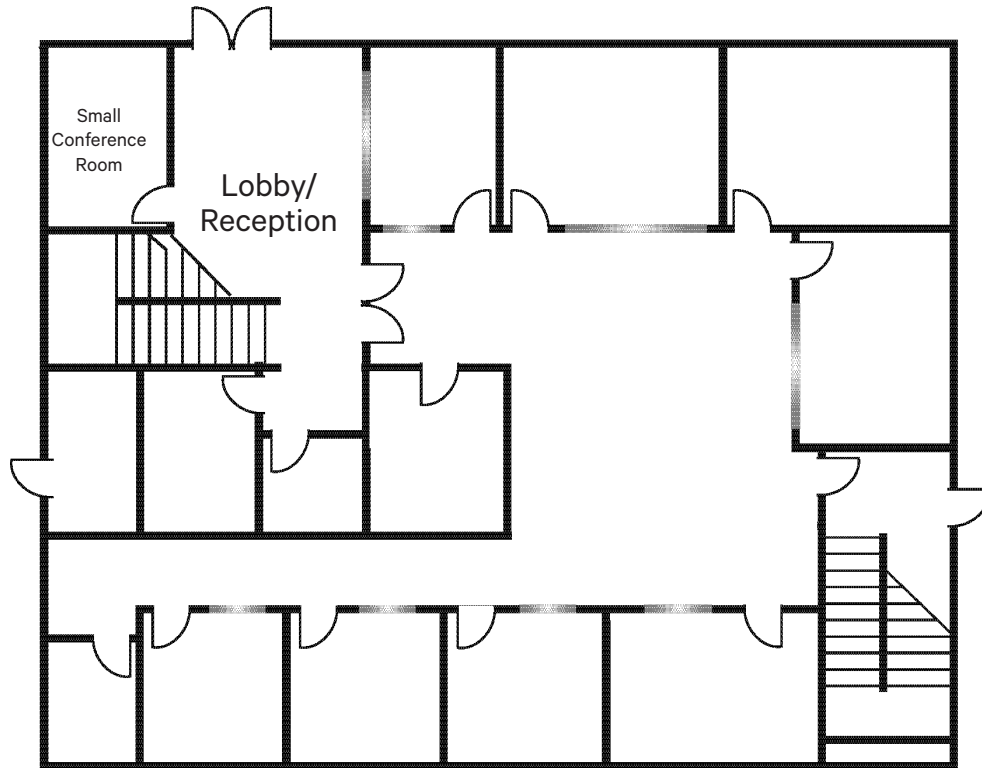


Alicia Park  
26054 Acero, Suite 100 | Mission Viejo, CA 92691

For Lease

# Floor Plan

First Floor



# Location Map



**Alicia Park**

26054 Acero, Suite 100 | Mission Viejo, CA 92691

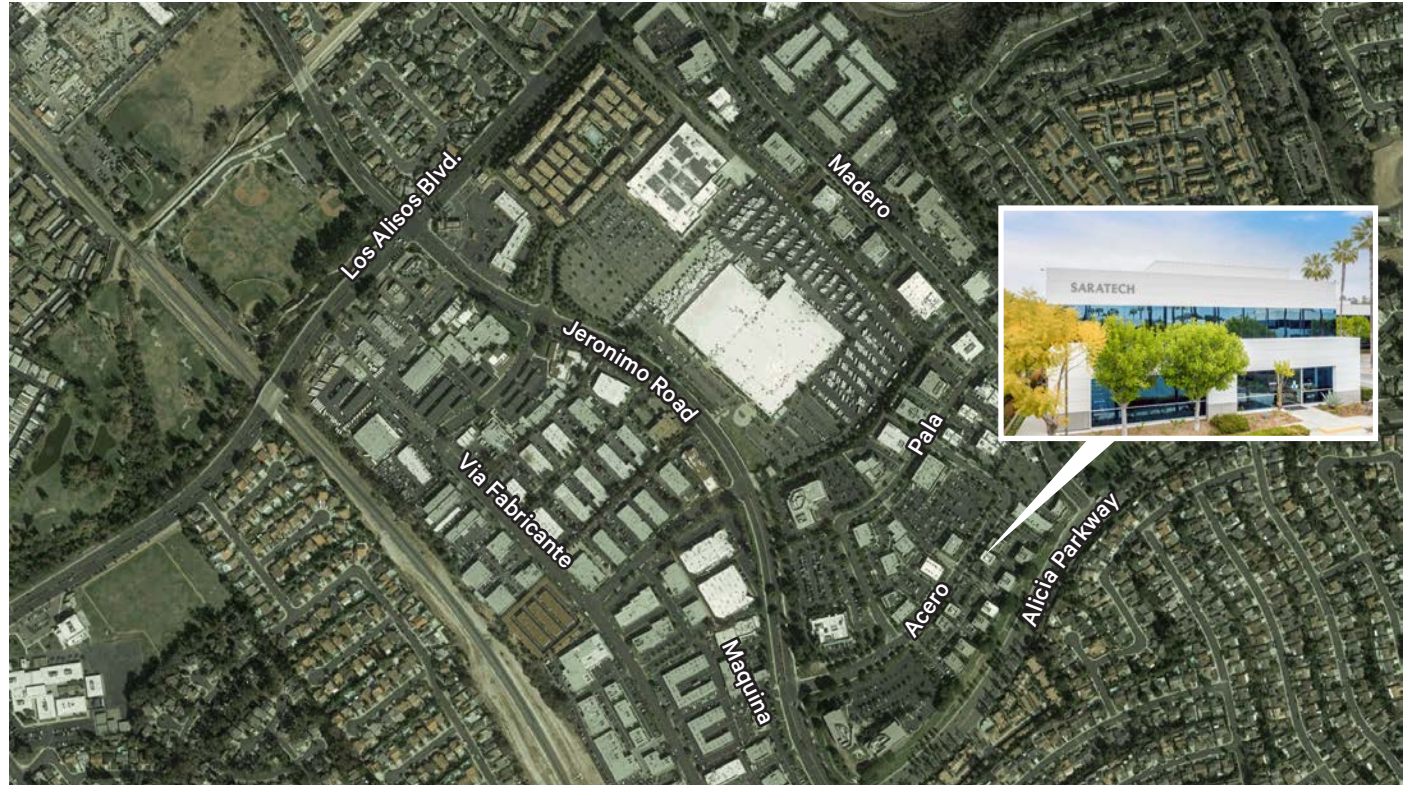
For Lease



## Alicia Park

26054 Acero, Suite 100 | Mission Viejo, CA 92691

For Lease



## Contact Us

### Keith Black

Vice President  
+1 949 725 8633  
keith.black@cbre.com  
Lic. 01266477

© 2024 CBRE, Inc. All rights reserved. This information has been obtained from sources believed reliable but has not been verified for accuracy or completeness. CBRE, Inc. makes no guarantee, representation or warranty and accepts no responsibility or liability as to the accuracy, completeness, or reliability of the information contained herein. You should conduct a careful, independent investigation of the property and verify all information. Any reliance on this information is solely at your own risk. CBRE and the CBRE logo are service marks of CBRE, Inc. All other marks displayed on this document are the property of their respective owners, and the use of such marks does not imply any affiliation with or endorsement of CBRE. Photos herein are the property of their respective owners. Use of these images without the express written consent of the owner is prohibited.

**CBRE**