

150

E PALMETTO PARK ROAD

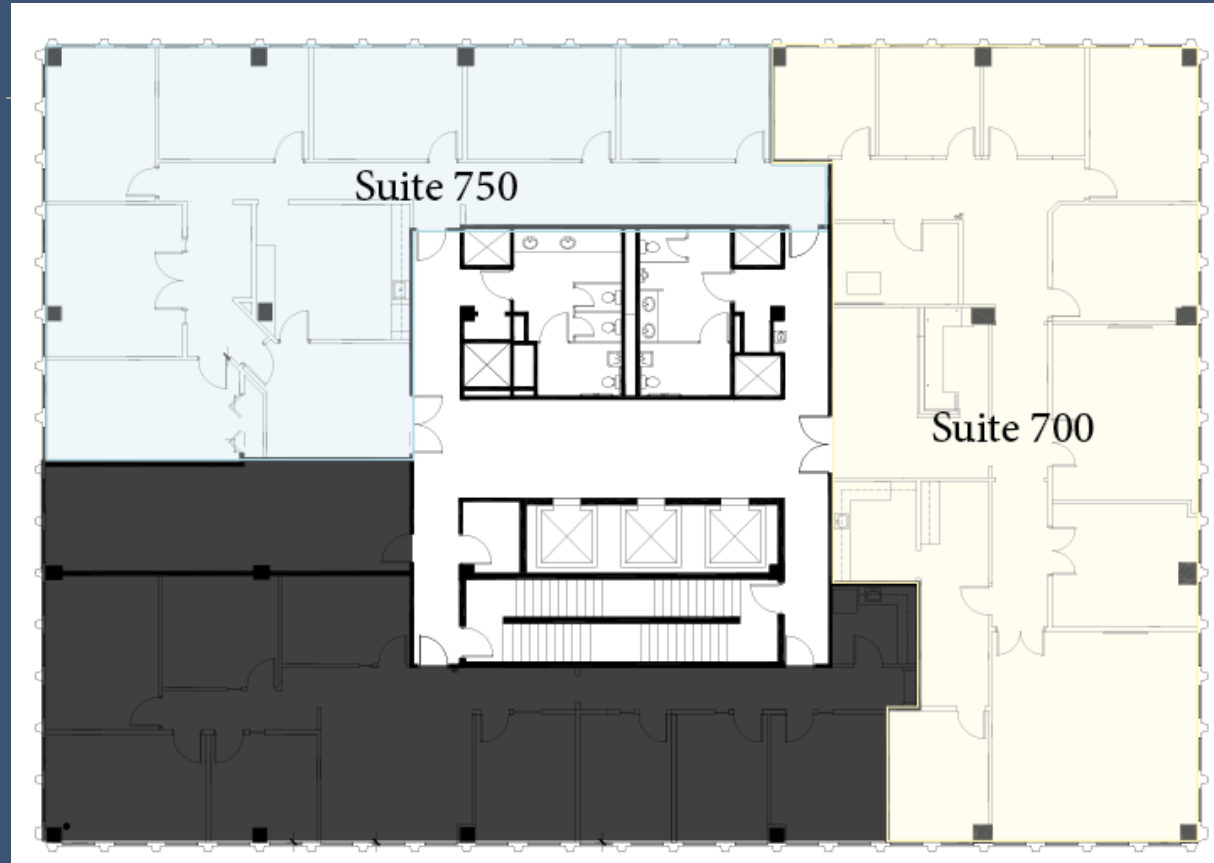
NEW OWNERSHIP | NEW MANAGEMENT | NEW LEASING

7th Floor

Suite 700 - 3,092 SF

Suite 750 - 3,763 SF

Total: 6,855 SF



FOR MORE INFORMATION, PLEASE CONTACT:

John Criddle

Executive Vice President

M +1 561 283 5176

john.criddle@cbre.com

Joseph Freitas

Senior Vice President

M +1 561 512 8844

joe.freitas@cbre.com

Max Pawk

First Vice President

M +1 561 393 1670

max.pawk@cbre.com

Nicholas Mulligan

Associate

M +1 561 393 1680

nicholas.mulligan@cbre.com



GROVER CORLEW

CBRE