

# 211-227 GRANITE RUN DRIVE

GRANITE RUN CORPORATE CENTER  
LANCASTER, PA 17601



TOTAL BUILDING: 62,782 SF  
AVAILABLE: 227 Granite Run Drive  
Suite 110: 5,462 SF at \$14.25/SF

OPERATING EXPENSES: 2024 Operating Expenses (including CAM & Real Estate Taxes) are estimated at \$4.10/SF, paid monthly with base rent.

TERM: 3-5 Years.

LOCATION: Granite Run Corporate Center at Rts. 283, 72, & Fruitville Pike  
Manheim Township

PARKING: 4 spaces per 1,000 SF

DEVELOPER: Granite Properties

ELECTRICITY: Units are separately metered.

PROPERTY MANAGEMENT: Horst Realty



FOR FURTHER INFORMATION CONTACT:

**Michelle Ebert or Wilay Boensch**

205 Granite Run Drive, Suite 280 • Lancaster, PA 17601  
(717) 735-6100 • [info@horstrealty.com](mailto:info@horstrealty.com) • [www.horstrealty.com](http://www.horstrealty.com)

**717-735-6100**

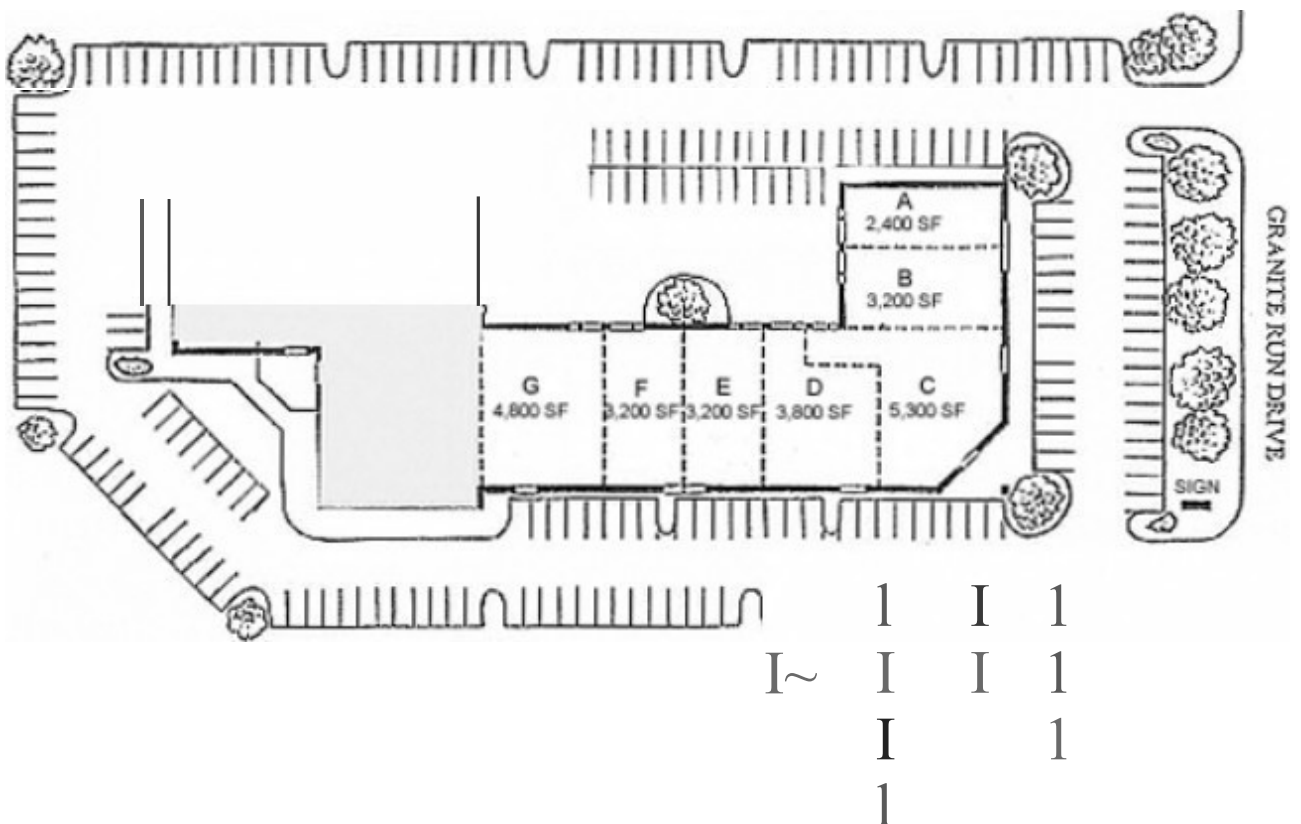
# 211 GRANITE RUN DRIVE

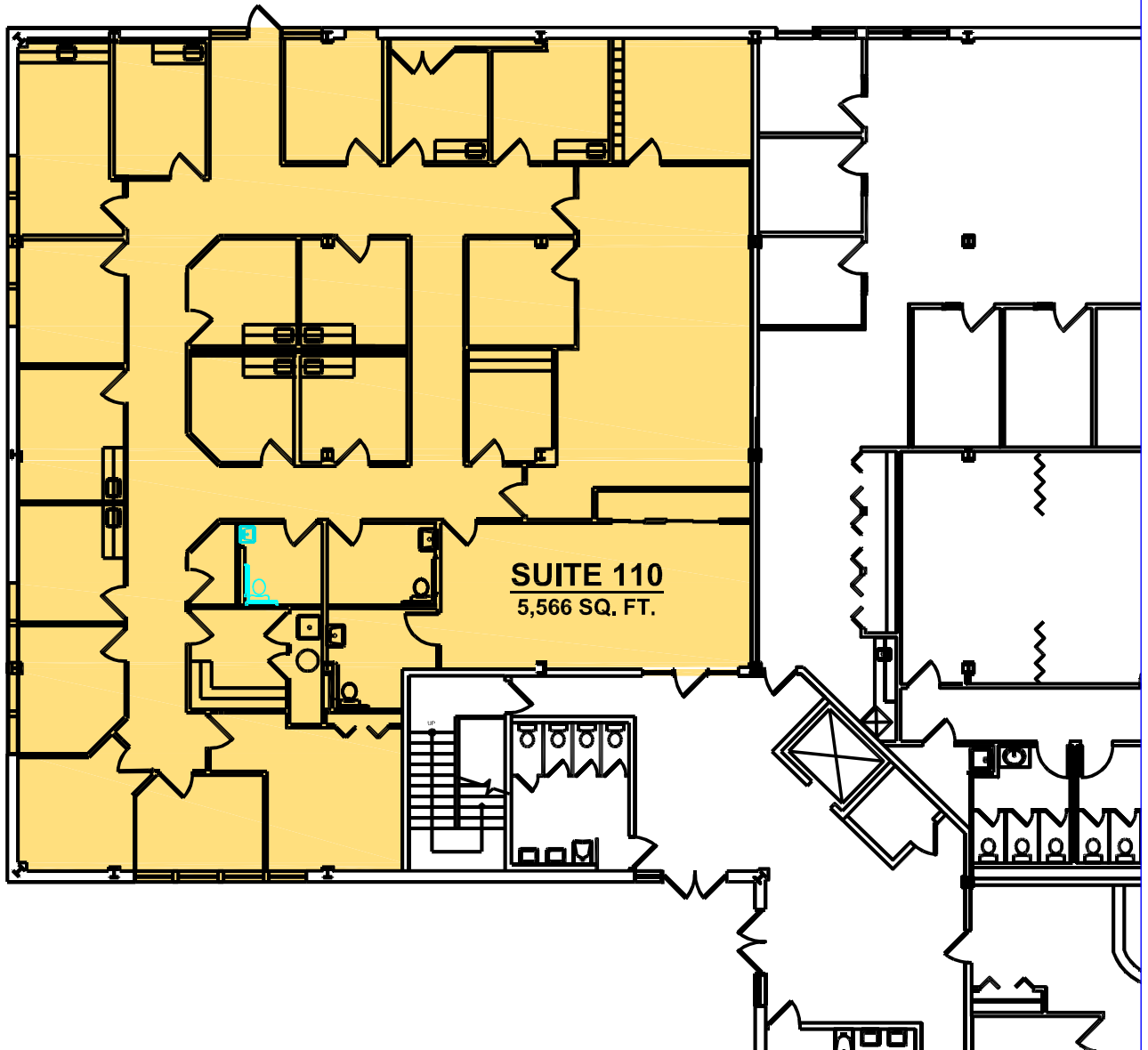
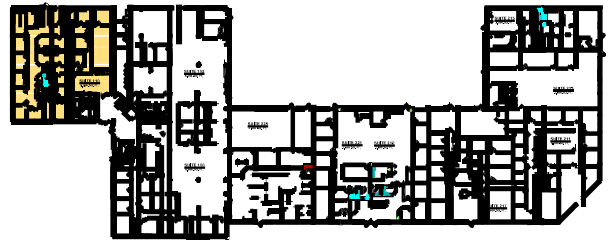
Lancaster PA

Site MAP



# 211-227 GRANITE RUN DRIVE Lancaster PA





BUILDING NAME	GRD 211	 <b>GRANITE</b> CORPORATE CENTER RUN	
ADDRESS	211 Granite Run Drive, Suite 110, Lancaster, PA 17601		
SQUARE FEET	5,566		Revision Date:
DRAWING NAME	211 GRD Suite 110		May 7, 2009
SCALE	1/16" = 1' - 0"		