

10-11

# Grosvenor Place, SW1

*Unique 2,755 sq ft penthouse duplex with private terrace*

10

11



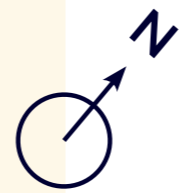
A stunning penthouse duplex office, featuring a spectacular private terrace with unique views over Belgravia.



This 2,755 sq ft workspace is designed to inspire with an abundance of natural light.

# 5

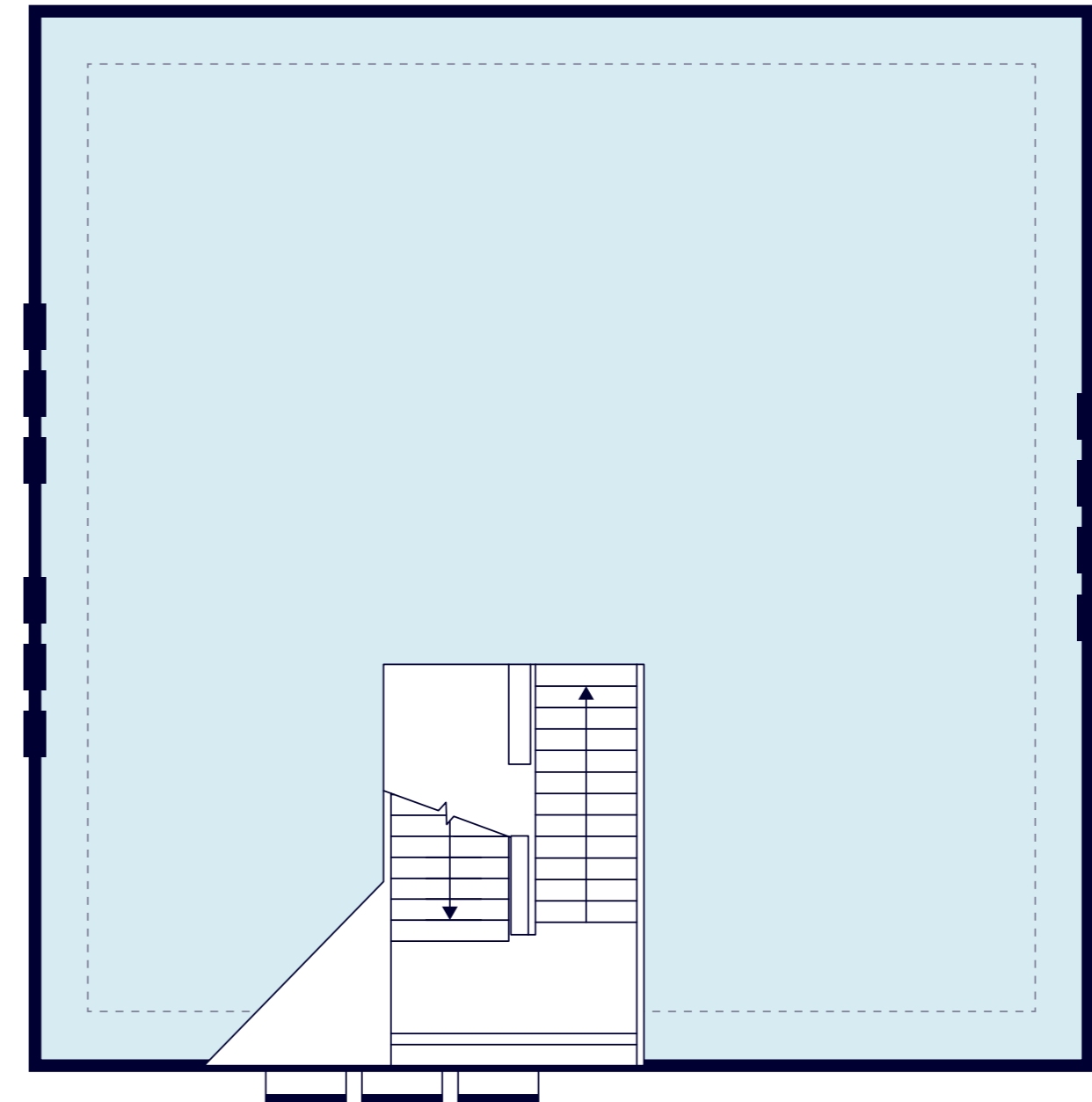
5th Floor / 1,542 sq ft



Views overlooking Belgravia

6th Floor / 1,213 sq ft

# 6



Views overlooking Buckingham Palace Garden

## Specification



Self-contained unit



Newly refurbished staffed reception



Air conditioning



Cycle and shower facilities



Raised floors



Automatic passenger lift



New LED lighting



Openable windows for airflow

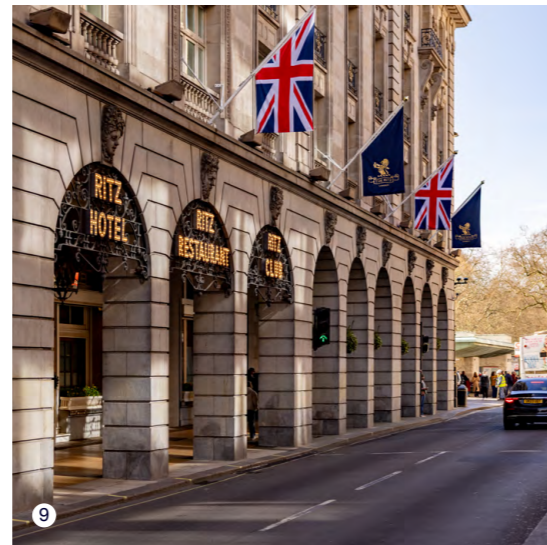
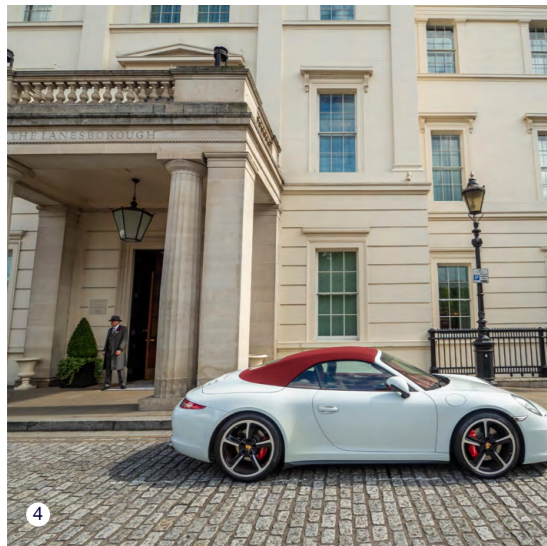


Demised WCs



Private roof terrace





**1) The Serpentine**  
Hyde Park

**4) The Lanesborough**  
Hyde Park Corner, SW1X 7TA

**7) Mosimann's**  
11B W Halkin St, SW1X 8JL

**2) Harrods**  
87-135 Brompton Rd, SW1X 7XL

**5) Buckingham Palace**  
SW1A 1AA

**8) The Goring Hotel**  
15 Beeston Pl, SW1W 0JW

**3) Pantechicon**  
19 Motcomb St, SW1X 8LB

**6) The Peninsula London**  
1 Grosvenor Pl, SW1X 7HJ

**9) The Ritz**  
150 Piccadilly, W1J 9BR



**10-11 Grosvenor Place**

*2,755 Sq Ft*

Unique  
penthouse  
office with  
terrace  
overlooking  
**Belgravia**

**CROSSLAND  
| OTTER HUNT |**

**Charlotte Steele**

*07503 625 481  
charlotte@coh.eu*

**Nick Sinclair**

*07970 511 730  
nick@coh.eu*

**Phil Frenay**

*07818 566 174  
phil@coh.eu*

**Tuckerman**

**Jamie Christian**

*07561 852 667  
jchristian@tuckerman.co.uk*

**Scott Fisher**

*07890 572 225  
sfisher@tuckerman.co.uk*

**Jade Henson-Amphlett**

*07921 452 727  
jhensona@tuckerman.co.uk*

VIEWINGS: strictly through the joint letting agents. TERMS: upon application.

*Misrepresentations Act 1967 – whilst all the information in this brochure is believed to be correct, neither the agent nor the client guarantee its accuracy nor is it intended to form any part of any contract. All areas quoted are approximate. October 2025.*