

125 Maiden Lane



FIDI | BUILT OUT WITH NON-VENTED KITCHEN

RETAIL SPACE FOR LEASE

± 1356 RSF

Ground Floor

NEW YORK, NEW YORK

Next to Lobby

Built Out with Non-Vented Kitchen

Unit: **Ground Floor**

RSF: **1356 RSF**

Avail: **Immed**

Price: **\$165 / RSF**

Key \$: **\$0**

Frontage: **36'9"**

Combine: **for 3846 RSF**

Scott Klatsky
(212)206-6155

sklatsky@timeequities.com



NYC RETAIL
BY TIME EQUITIES INC

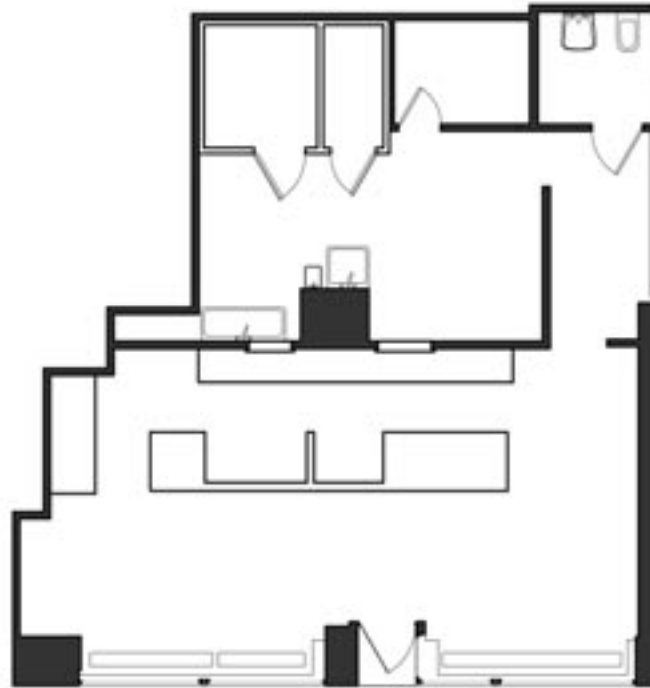
Licensed Real Estate Broker

Scott Schneidman
(212)206-6163

sschneidman@timeequities.com

125 Maiden Lane

1356 RSF
Ground
Floor



← 36'9" →

MAIDEN LANE

FIDI | BUILT OUT WITH NON-VENTED KITCHEN

RETAIL SPACE FOR LEASE

± 1356 RSF

Ground Floor

NEW YORK, NEW YORK



No warranty, or representation is made as to the accuracy of the above information and same is submitted subject to errors, omissions, change of price, rental or other conditions, prior lease or withdrawal without notice, and to any special listing conditions, including the rate and manner of payment of commissions for particular offering, the terms of which are available to duly licensed brokers. This listing is subject to the aforesaid conditions and is not to be deemed an employment nor a binding contract of any kind unless or until our brokerage agreement is fully executed.

Scott Klatsky
(212)206-6155

sklatsky@timeequities.com



Licensed Real Estate Broker

Scott Schneidman
(212)206-6163

sschneidman@timeequities.com

55 FIFTH AVE | 15TH FLOOR | NEW YORK, NY | 10003-4398 | 212-206-6000 | TIMEEQUITIES.COM