



# PINEAPPLE PROFESSIONAL CENTER

2425 Pineapple Ave, Suite 108, Melbourne, FL 32935

2,011 SF Riverfront Office Suite | \$18/SF/YR Modified Gross Plus Electric

\$18/SF/YR Modified Gross

Plus Electric

## PROPERTY HIGHLIGHTS

- Riverfront Office Suite in Melbourne
- 2,011 SF Office with Kitchenette, Private Restroom, Reception Area, Large Open Work Spaces, and Two Private Offices
- Peaceful Setting in a Multi-Tenant Property
- Local and Responsive Owner
- Quick Access to US 1, The Eau Gallie Causeway, & The Eau Gallie Arts District (EGAD)
- Adjacent to Popular Restaurant The Brevardian
- \$18/SF/YR Modified Gross Plus Electric

## PROPERTY DESCRIPTION

Discover a unique leasing opportunity just steps from the Eau Gallie Arts District. This riverfront office suite offers approximately 2,011 SF of functional office space featuring two private offices, a reception area, large open work spaces, kitchenette, and direct access to one of Melbourne's most desirable business environments.

### Nicole Reed

Broker Associate

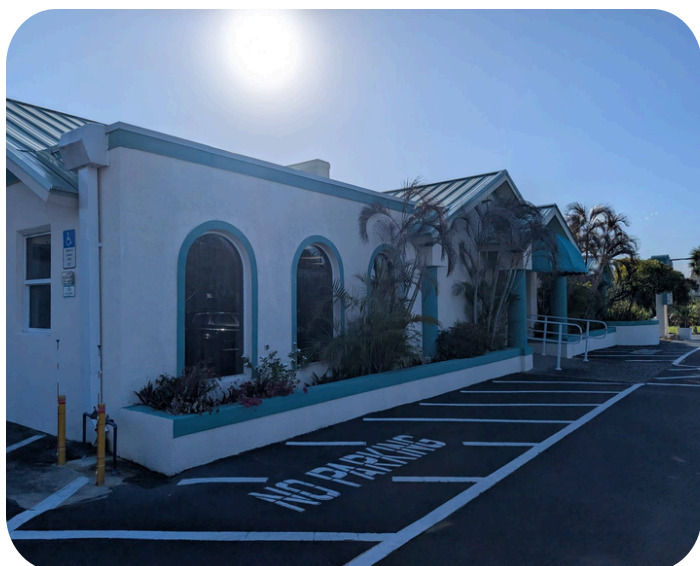
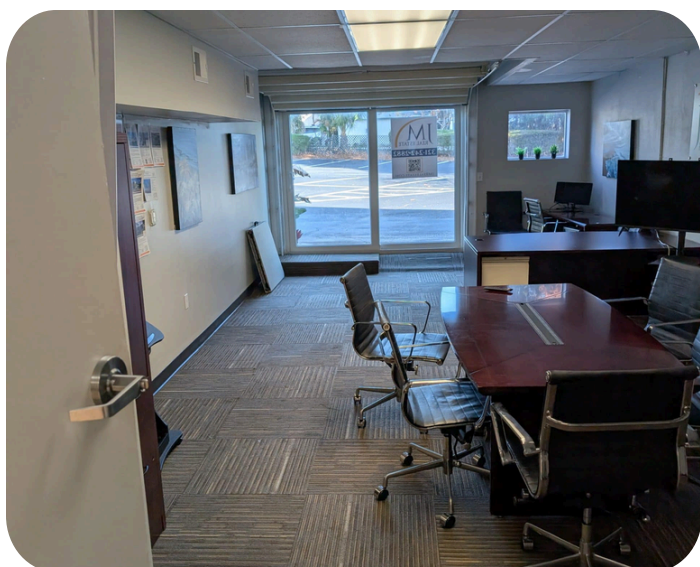
Cell: 314.795.4339 | Nicole@JMRealEstate.com

### Michael Corbitt

Licensed Commercial Agent

Cell: 404.376.3374 | Michael@JMRealEstate.com

**PINEAPPLE PROFESSIONAL CENTER | SUITE 108**

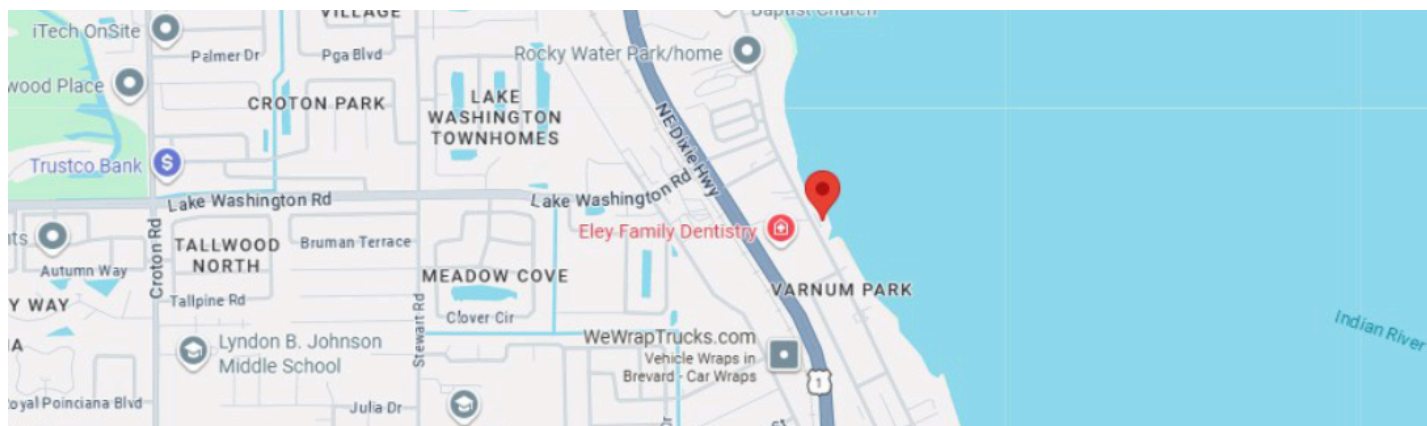


## SUITE 108 FLOOR PLAN



- Reception Area
- Private Office 1
- Private Office 2
- Large Open Work Spaces
- Private Restroom
- Kitchenette
- ADA Restroom

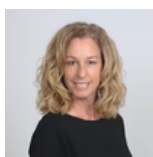
## LOCATION MAP



## LOCATION HIGHLIGHTS

- Eau Gallie Arts District (EGAD)
- Indian River Frontage
- Adjacent to The Brevardian
- Central Melbourne Location
- Easy Access to US-1

## CONTACT



### **Nicole Reed**

Broker Associate

Cell: 314.795.4339

Nicole@JMRealEstate.com

JMRealEstate.com



### **Michael Corbitt**

Licensed Commercial Agent

Cell: 404.376.3374

Michael@JMRealEstate.com

JMRealEstate.com