

NORSOUTH BUSINESS PARK

2222 VERUS STREET
SAN DIEGO, CA 92154

+7,339 RSF
SHOWROOM/WAREHOUSE
FOR LEASE



CURT PERRY | Vice President
858.458.3304 | cperry@voitco.com | Lic. #01466077

Voit
REAL ESTATE SERVICES

NORSOUTH 2222 VERUS STREET #A-B
BUSINESS PARK SAN DIEGO, CALIFORNIA 92154



±15,865 RSF
TOTAL BUILDING SIZE

±7,339 RSF
AVAILABLE SIZE

1985
YEAR BUILT

1.00/1,000 RSF
PARKING

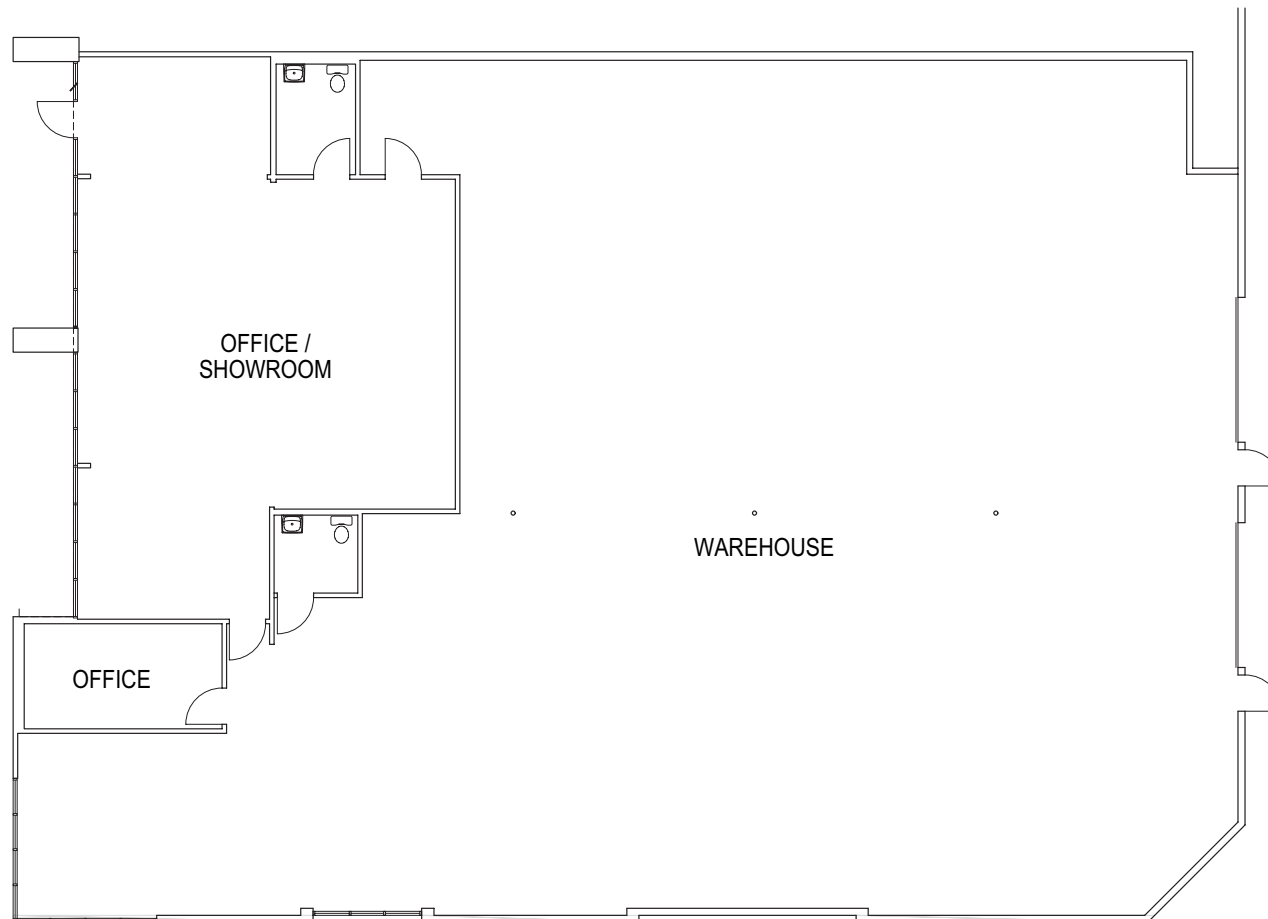
±0.65 ACRES
TOTAL LAND SIZE

±16'
CLEAR HEIGHT

SUITES A & B: ±7,339 RSF

\$1.50 PSF + \$0.05 CAM

- » 20% Office and Showroom, Balance Warehouse
- » Ideal Uses: Wholesale/Warehouse/Manufacturing
- » Excellent I-5 Freeway Access
- » HUB Zone Qualified
- » Two (2) Ground Level Loading Doors
- » Two (2) Restrooms
- » Zoning: IL-2-1 – City of San Diego



NORSOUTH BUSINESS PARK



CURT PERRY | Vice President | 858.458.3304 | cperry@voitco.com | Lic. #01466077

4180 La Jolla Village Drive, Suite 100, La Jolla, CA 92037 | 858.453.0505 | 858.408.3976 F | Lic #01991785 | www.voitco.com

Licensed as Real Estate Salesperson by the DRE. The information contained herein has been obtained from sources we deem reliable. While we have no reason to doubt its accuracy, we do not guarantee it.

©2024 Voit Real Estate Services, Inc. All Rights Reserved.

Voit
REAL ESTATE SERVICES