

FOR LEASE

1537 E ADAMS BLVD
LOS ANGELES, CA 90011

±6,425 SF

INDUSTRIAL BUILDING
WITH FENCED PARKING



For more information, please contact:

Daniel Park

(213) 446-0396

Danielpark777@hotmail.com

DRE# 01227056



Park Industrial Realty
800 McGarry St, 5th Floor
Los Angeles, CA 90021
Corporation DRE# 01983713

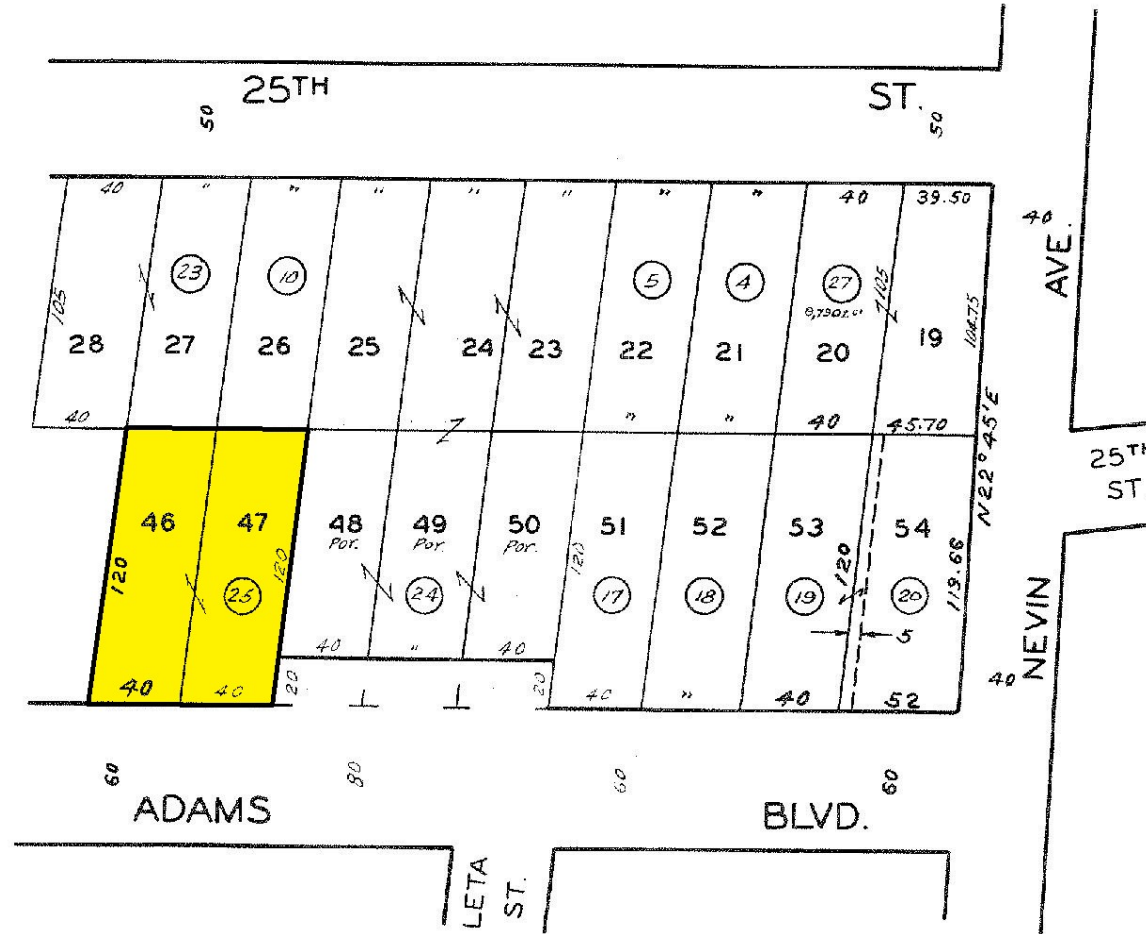
Building SF:	6,425 SF	• Freestanding industrial facility just minutes from Downtown LA and major freeways
Land SF:	9,583 SF	• Large office area
Office SF:	2,100 SF	• 16' minimum clear height
Year Built:	1964	• Secure fenced & gated yard for parking and loading
Clear Height:	16'	• Excellent for variety of industrial, manufacturing, warehouse or e-commerce uses
Power:	100a, 240v, 1p	• Newly painted and refurbished
Loading:	1 GL	
# Parking:	8	
Zoning:	M1	
Lease Rate:	\$8,000 (\$1.25/SF) Gross	

All information has been furnished from sources which we deem reliable, but for which we assume no liability. All measurements are approximate. Broker/Owner do not warrant its accuracy. Buyer/Lessee must verify all information.

5118 | 18

1996

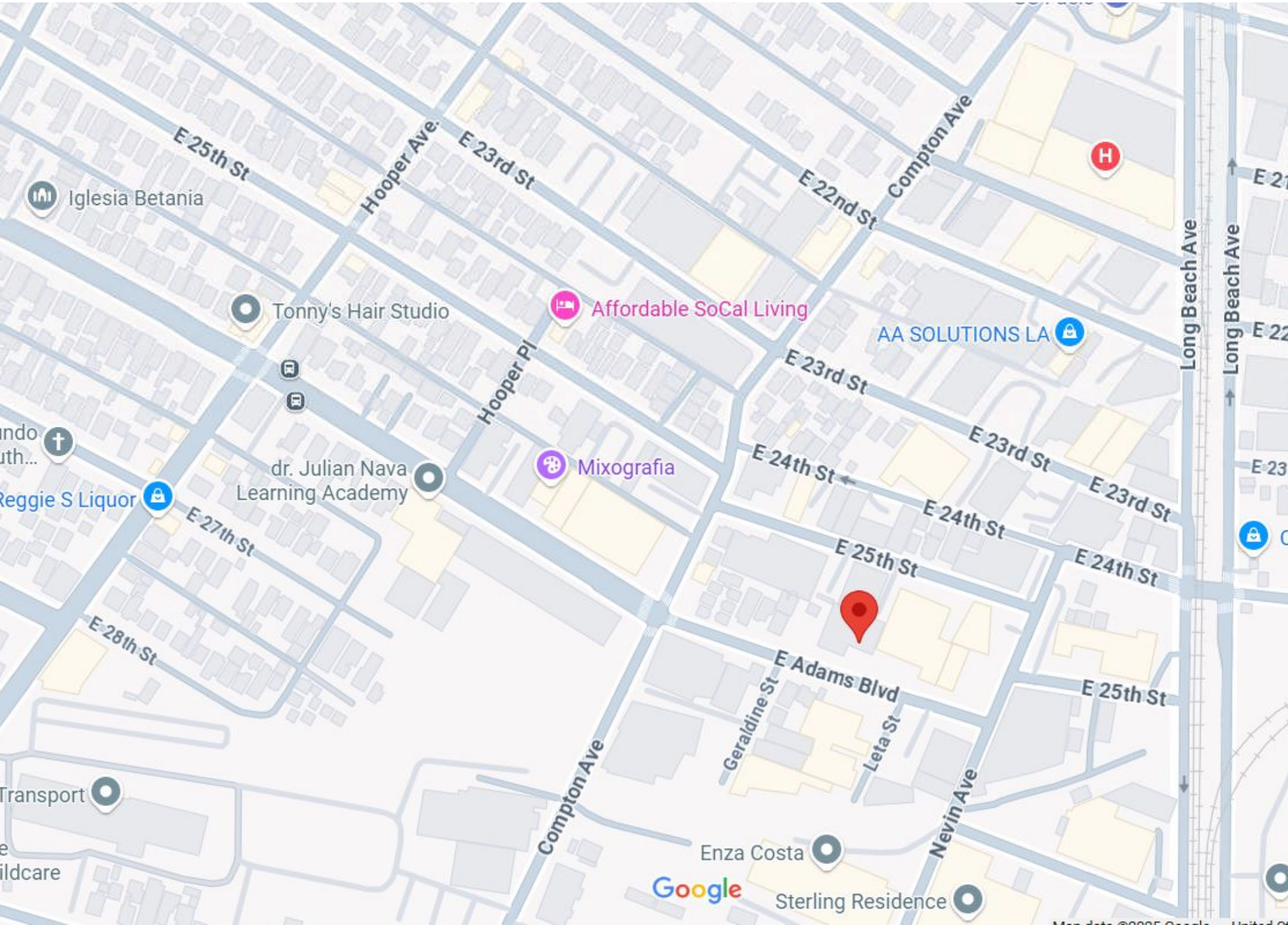
SCALE 1" = 60'



HARBERT & BUTTERWORTH'S
ADAMS ST. TRACT

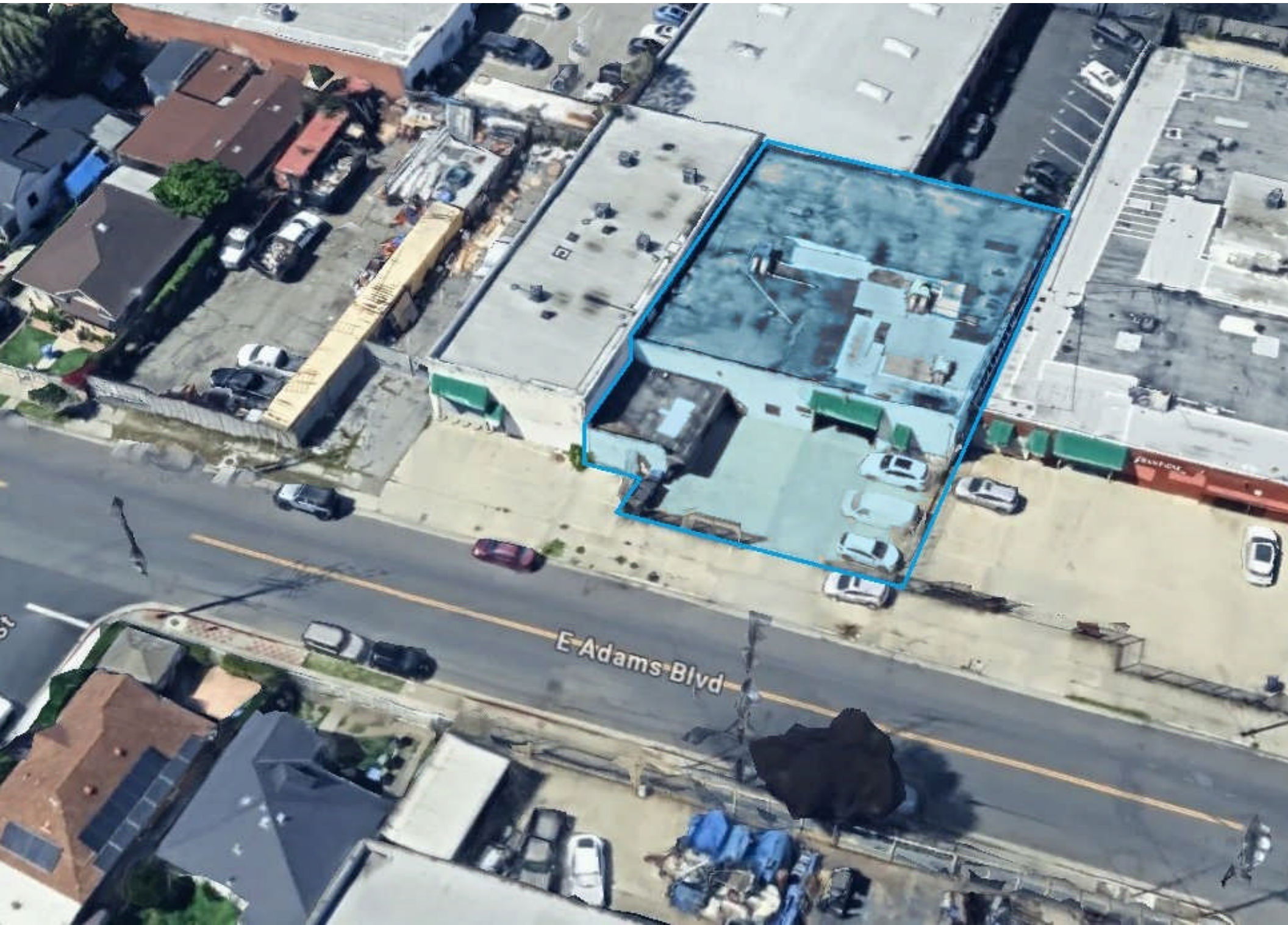
M.B. 3-52

CODE
6658



FOR LEASE | ±6,425 SF INDUSTRIAL BUILDING

1537 E ADAMS BLVD













FOR LEASE | ±6,425 SF INDUSTRIAL BUILDING

1537 E ADAMS BLVD

