



FOR LEASE – AVAILABLE 6/01/2027

103 – 109 Gibraltar Road

Horsham, PA 19044

Property Highlights

- 18,000 SF flex space available 6/01/2027
 - Three (3) tailgate loading docks
 - Four (4) van height loading doors
 - 16' clear height
 - 100% climate controlled
 - LED lighting
 - 600-amp / 225-amp / 200-amp / 150-amp service panels at 120/208V 3 phase 4 wire
 - Three (3) private offices
- Monument signage available
- Within a mile from the Willow Grove/Horsham Exit 343 of the PA Turnpike



For information, please contact:

Patrick Nowlan

Senior Managing Director
t 610-755-6965
patrick.nowlan@nmrk.com

Justin Bell

Senior Managing Director
t 610-755-6979
justin.bell@nmrk.com

1000 Continental Drive
Suite 200
King of Prussia, PA 19406
t 610-265-0600

nmrk.com

NEWMARK

Licensed in Pennsylvania as Newmark Real Estate

The information contained herein has been obtained from sources deemed reliable but has not been verified and no guarantee, warranty or representation, either express or implied, is made with respect to such information. Terms of sale or lease and availability are subject to change or withdrawal without notice.



**555 FLATS
LUXURY LIVING
0.6 MILES AWAY**



**SHOPPING AT THE
UPPER DUBLIN
PROMENADE
1.8 MILES AWAY**



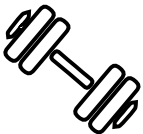
**FIVE DAYCARE
FACILITIES UNDER
5 MINUTES FROM
THE OFFICE**



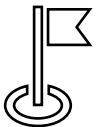
**NUMEROUS DINING
ESTABLISHMENTS
NEARBY**



**MULTIPLE SEPTA BUS
STOPS WITHIN THE
PARK**



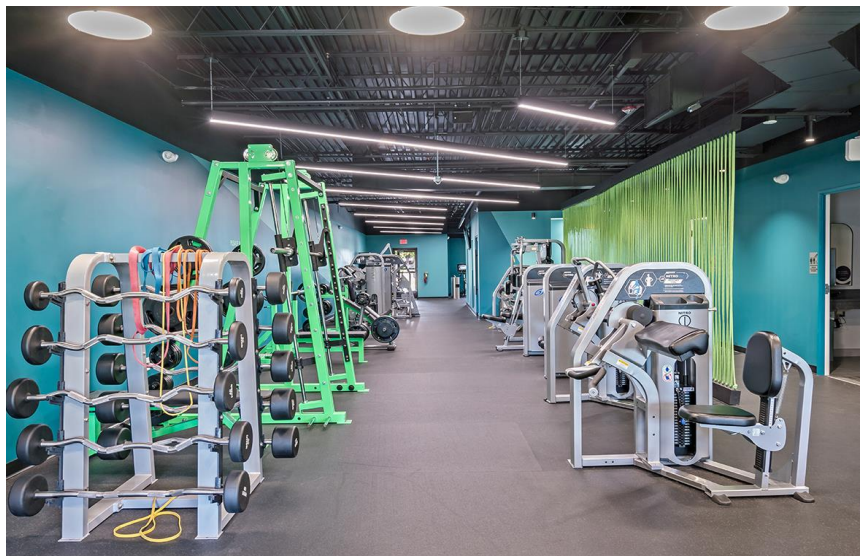
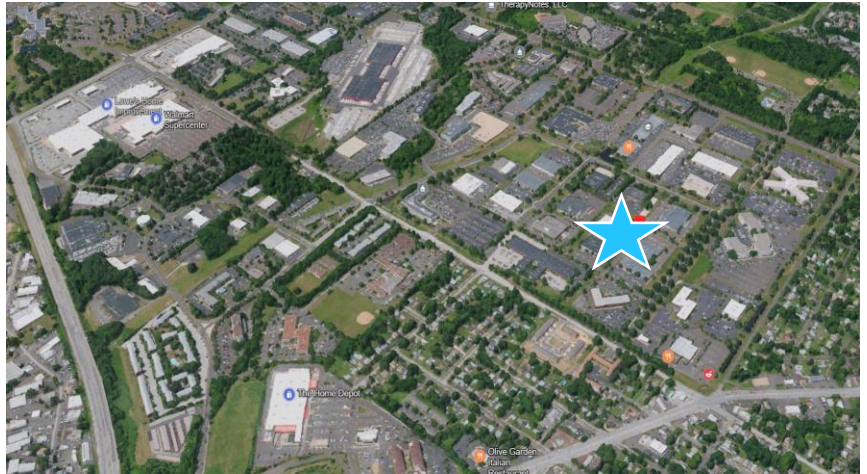
**ACCESS TO OUR
FITNESS CENTER
LOCATED AT 100
LAKESIDE DRIVE**

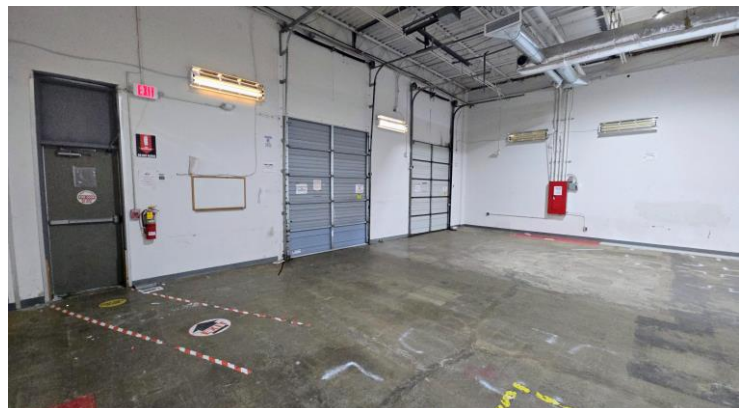
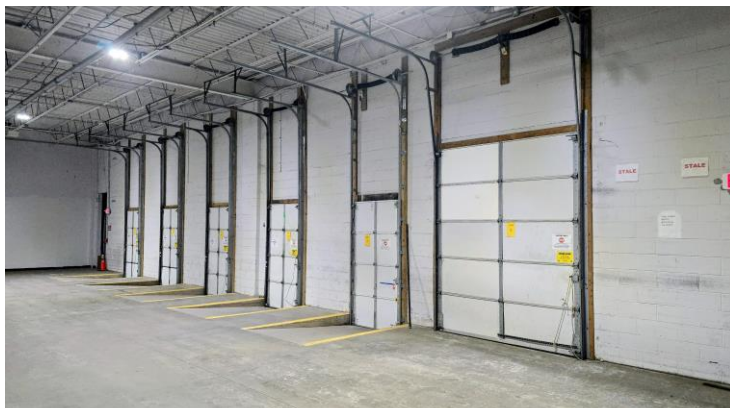
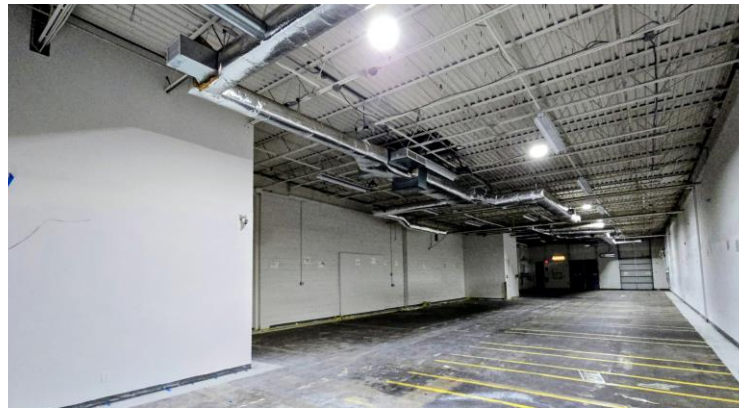
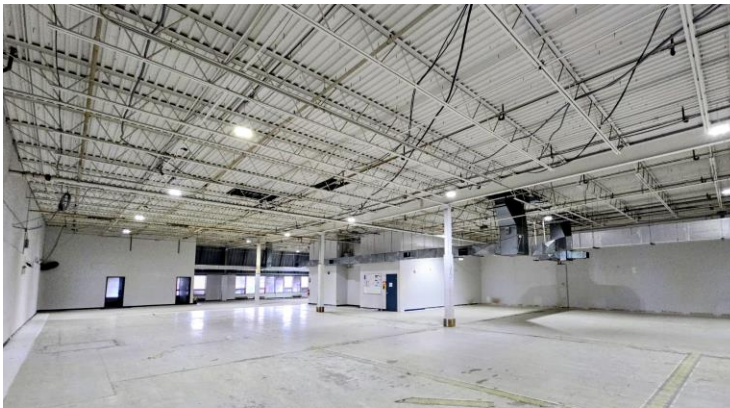


**QUICK ACCESS TO
THE PA TURNPIKE,
ROUTES 611 AND 63**



**ACCESS TO THE 5-MILE
HORSHAM POWERLINE
TRAIL WITH OUTDOOR
CIRCUITS**





Suites 105 & 108 - 18,000 SF

