

FOR LEASE



2208 7TH STREET | LOS ANGELES, CALIFORNIA

OFFERING SUMMARY

Lease Rate:	\$2.00 SF/month (NNN)
Available SF:	7,000 SF

PROPERTY HIGHLIGHTS

- Former Medical Office
- Hard Corner Opportunity
- Parking on Site in Rear
- Located in Macarthur Park Area
- Street Parking Also Available
- High Density Neighborhood
- High Disposable Income Neighborhood

EXCLUSIVELY LISTED BY:

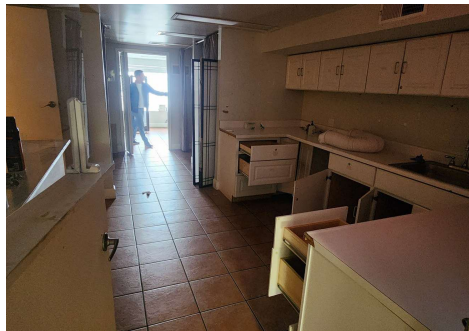
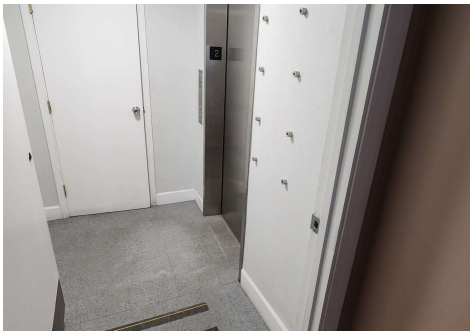
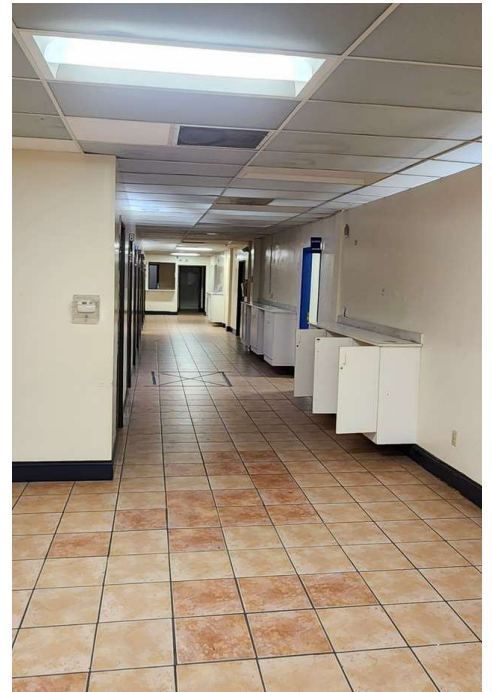
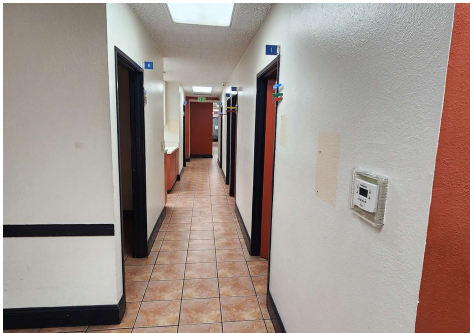
Patrick Ortiz

Senior Vice President
310.806.6105 Direct
portiz@naicapital.com
CA DRE #01756382

NAICapital
COMMERCIAL REAL ESTATE SERVICES, WORLDWIDE

www.naicapital.com

PROPERTY PHOTOS



Patrick Ortiz
Senior Vice President
310.806.6105 Direct
portiz@naicapital.com

CA DRE #01756382

No warranty, express or implied, is made as to the accuracy of the information contained herein. This information is submitted subject to errors, omissions, change of price, rental or other conditions, withdrawal without notice, and is subject to any special listing conditions imposed by our principals. Cooperating brokers, buyers, tenants and other parties who receive this document should not rely on it, but should use it as a starting point of analysis, and should independently confirm the accuracy of the information contained herein through a due diligence review of the books, records, files and documents that constitute reliable sources of the information described herein. Logos are for identification purposes only and may be trademarks of their respective companies. NAI Capital Commercial, Inc. CAL DRE Lic. #02130474

NAI Capital | 15821 Ventura Blvd. | Suite 320 | Encino, CA 91436