

62,252 SF FOR LEASE



912

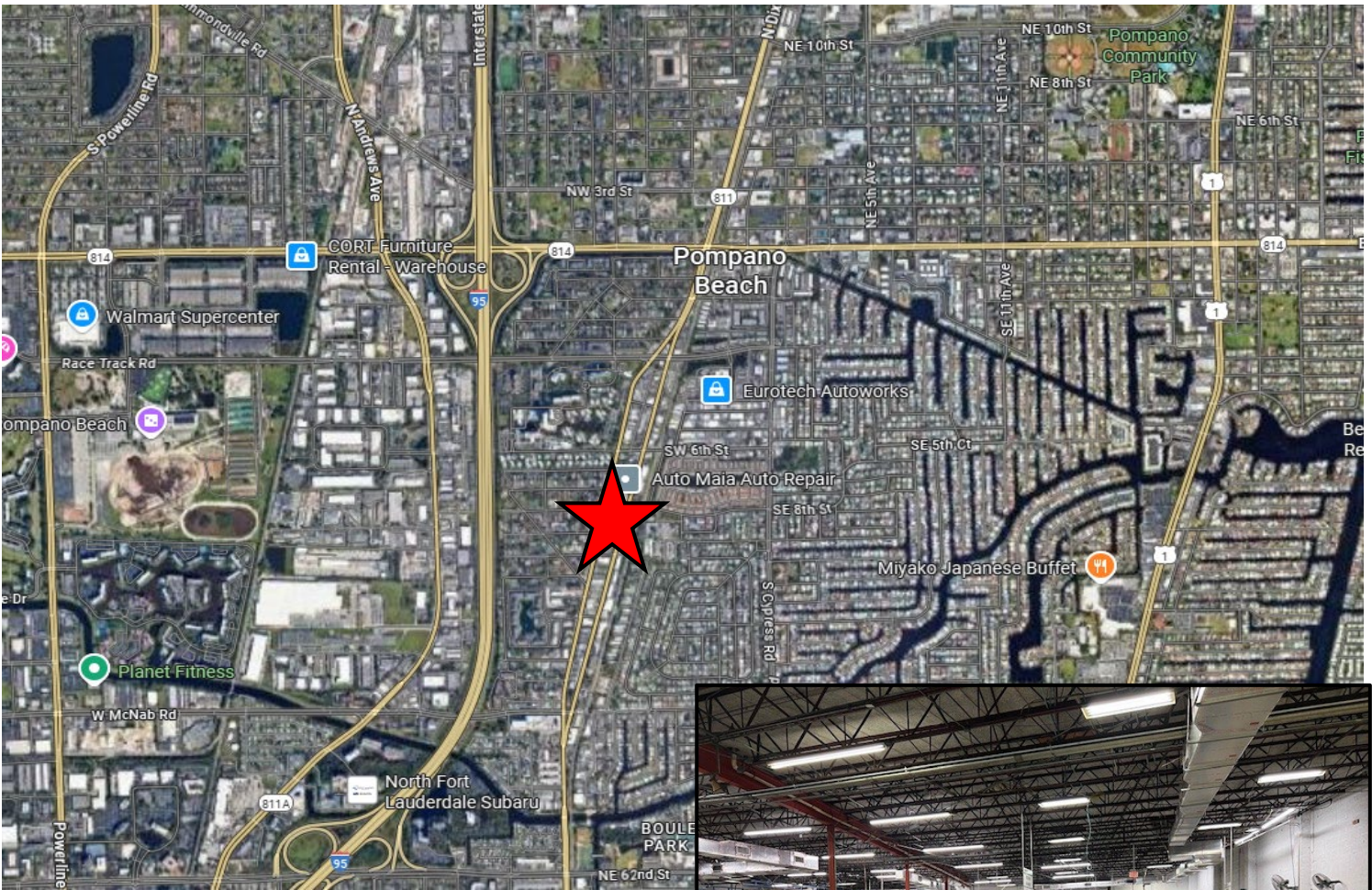
# S Dixie Highway

Pompano Beach, Florida



CUSHMAN & WAKEFIELD

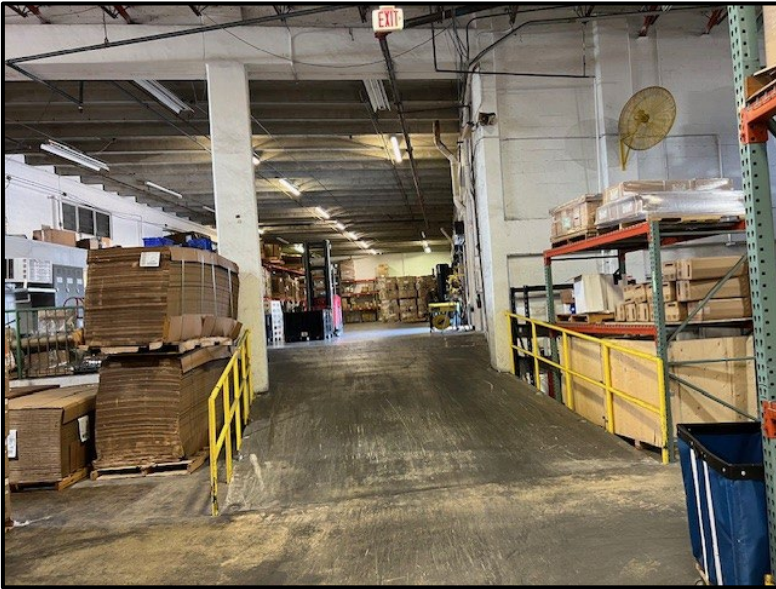




## PROPERTY FEATURES

- 62,252 SF Building
  - 3.528 Acres
  - Fire Sprinklered
  - Oversized Drive-In Doors
  - 3 Dock High Doors with Pit Levelers
  - Dock Platform with Van Height loading
  - Clear Ceiling Height: Varies from 12' to 27'
  - Partially Air-Conditioned Warehouse
  - Power Drops throughout
  - Compressed Air throughout
  - Street Parking plus an 88 Space Secured Parking Lot
  - Zoning: Building- B-4 and Parking Lot- B-3
- Electrical Service:
    - South Side: 400 Amps / 240 Volt / 3 phase
    - South Side: 1200 Amps / 240 Volt / 3 phase
    - East Side/North End: 600 Amps / 480 Volt / 3 phase

# PHOTOS



## CONTACT:

Chris Metzger, SIOR  
Vice Chairman  
+1 954 415 9155  
[Chris.metzger@cushwake.com](mailto:Chris.metzger@cushwake.com)