



**HLC**

HAMPTON LOGISTICS CENTER

**FOR LEASE**

**Two Class A  
Logistics Buildings**

**506,559 SF Total**



**Both Buildings Available for  
Immediate Occupancy**

## Hampton Logistics Center

**Building #1** 1012 North Campus Parkway, Hampton VA 23666

**Building #2** 1008 North Campus Parkway, Hampton VA 23666

<b>SIZE</b>	<b>Building 1</b> - 230,874 SF <b>Building 2</b> - 275,685 SF	<b>LOADING</b>	<b>Building 1</b> - 46 Dock Doors and 2 Grade <b>Building 2</b> - 57 Dock Doors and 2 Grade
<b>LAND</b>	31.9 acres	<b>FLOORING</b>	7" Concrete system
<b>TYPE</b>	Rear-loaded industrial	<b>HEATING</b>	Gas (Cambridge units)
<b>CEILING</b>	36' clear	<b>SPRINKLERS</b>	ESFR sprinklers with K25 heads
<b>DEPTH</b>	268 Ft.	<b>OFFICE</b>	Glass storefront adjacent to parking
<b>TRUCK COURT</b>	185 Ft.	<b>LOCATION</b>	North Campus Pkwy. and Neil Armstrong Pkwy, Hampton, VA
<b>COLUMNS</b>	52'x52' with 60' speed bay	<b>DESIGNATIONS</b>	LEED® Gold
<b>PARKING</b>	1 Car park per 1,500 SF 1 Truck park per 4,700 SF		

**Website**



LEASING BY

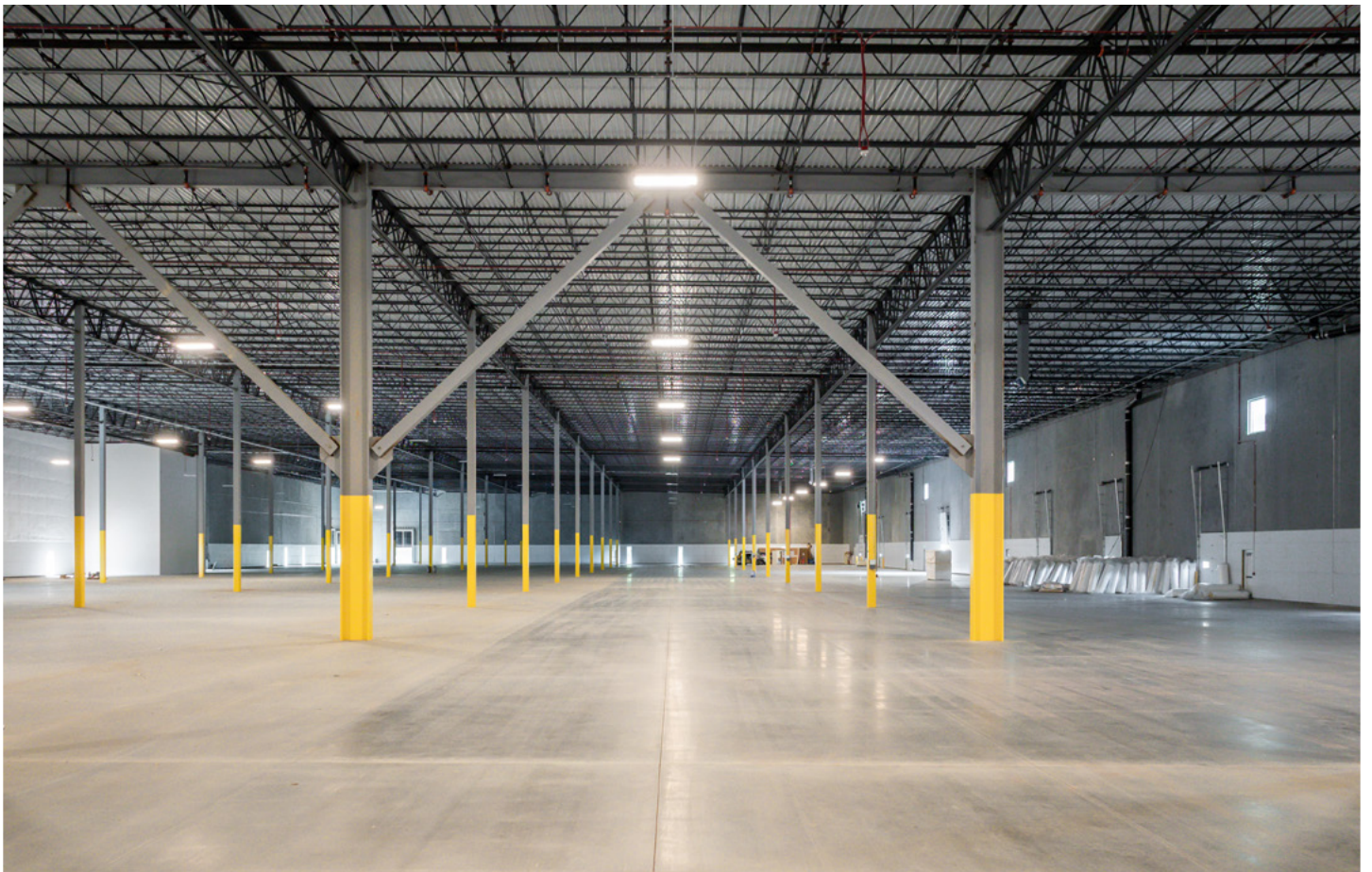
**Gregg Christoffersen**

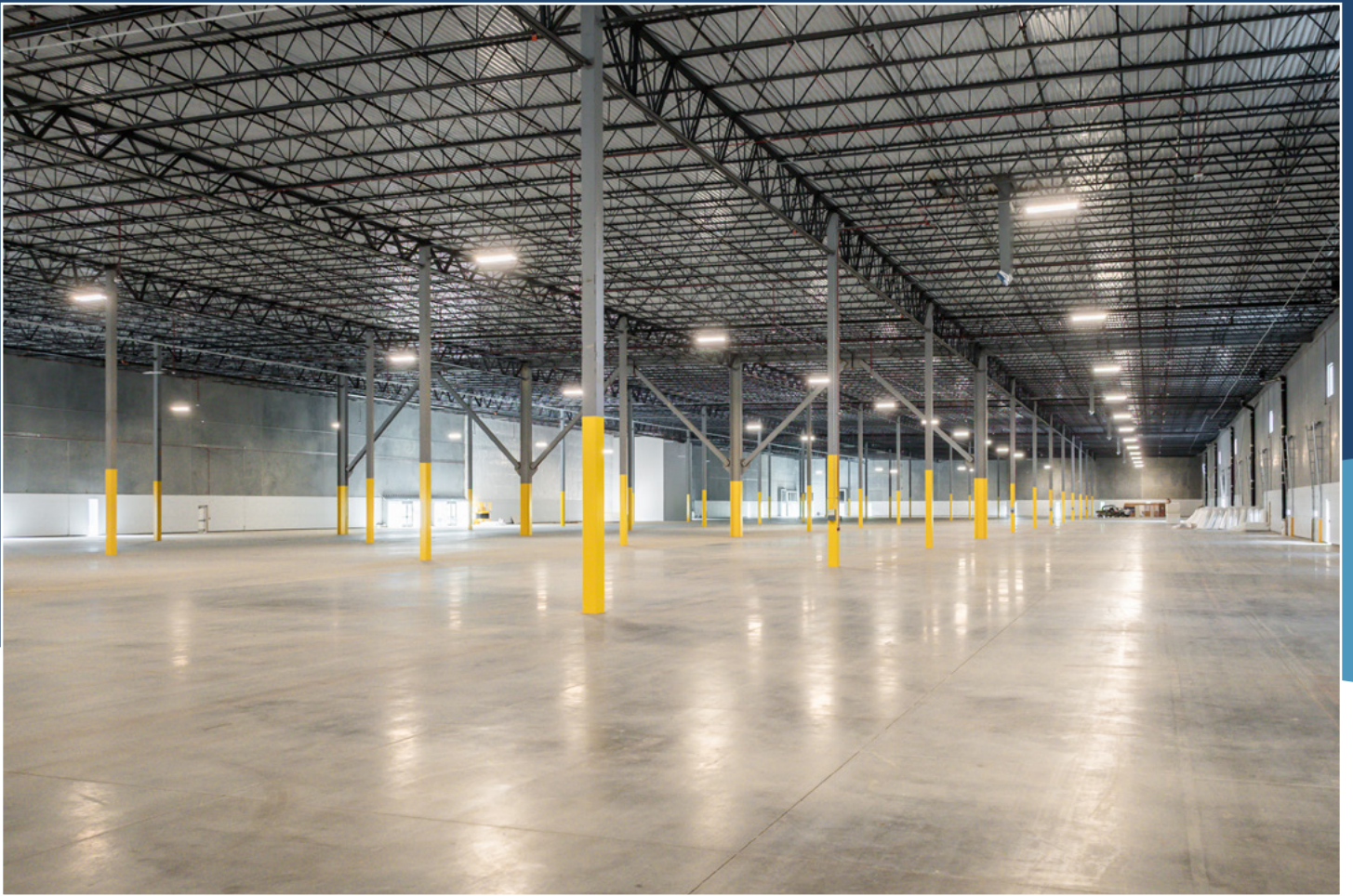
Managing Director  
757 348 1477  
gregg.christoffersen@jll.com

**Todd Scholsohn**

Senior Associate  
757 938 1562  
todd.scholsohn@jll.com

Visit website: [www.hamptonlogisticscenter.com](http://www.hamptonlogisticscenter.com)







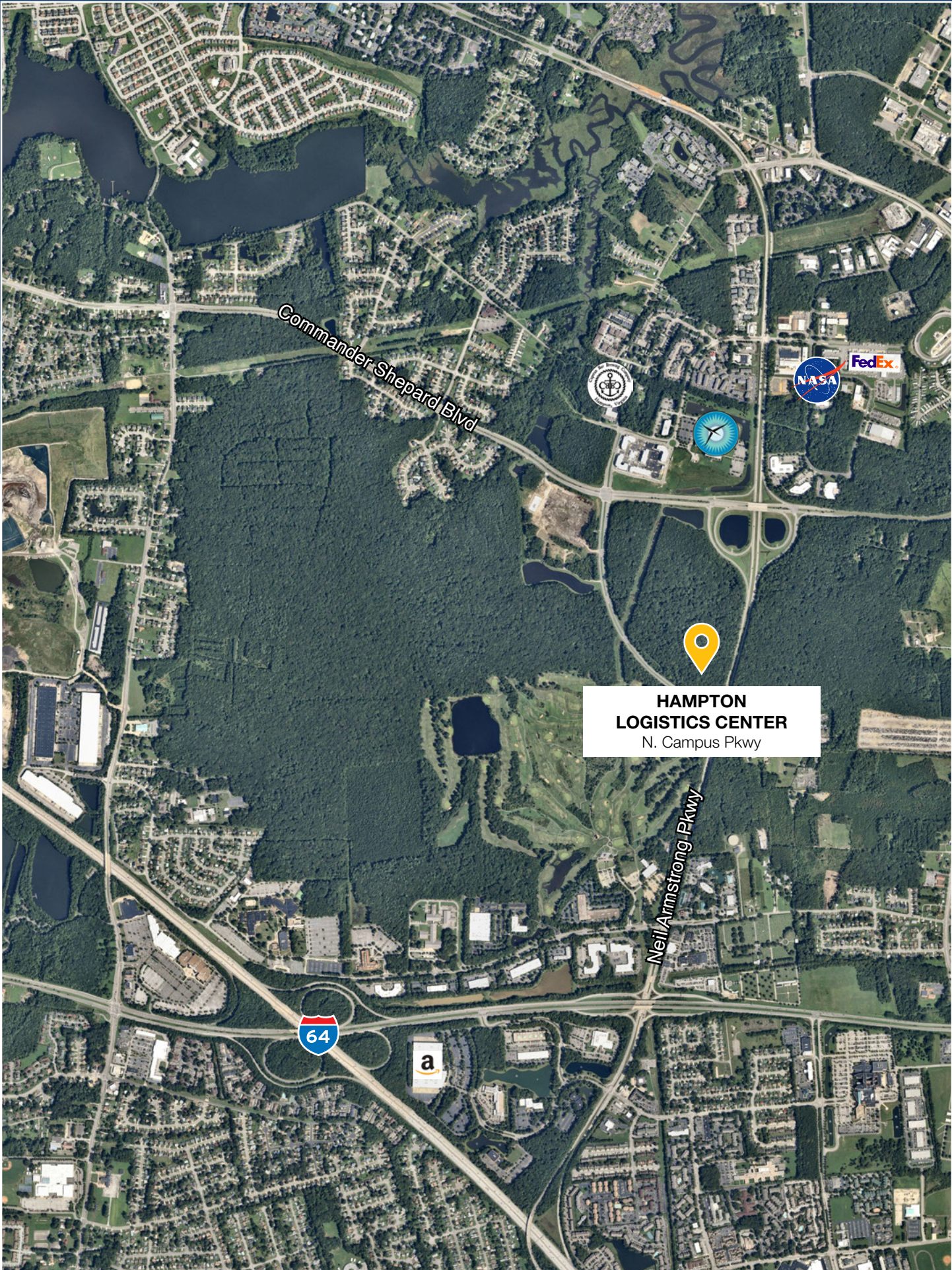
**Building 1**  
230,874 SF

**Building 2**  
275,685 SF



**Building 2**  
275,685 SF

**Building 1**  
230,874 SF



Commander Shepard Blvd

**HAMPTON  
LOGISTICS CENTER**  
N. Campus Pkwy

Neil Armstrong Pkwy

64

a

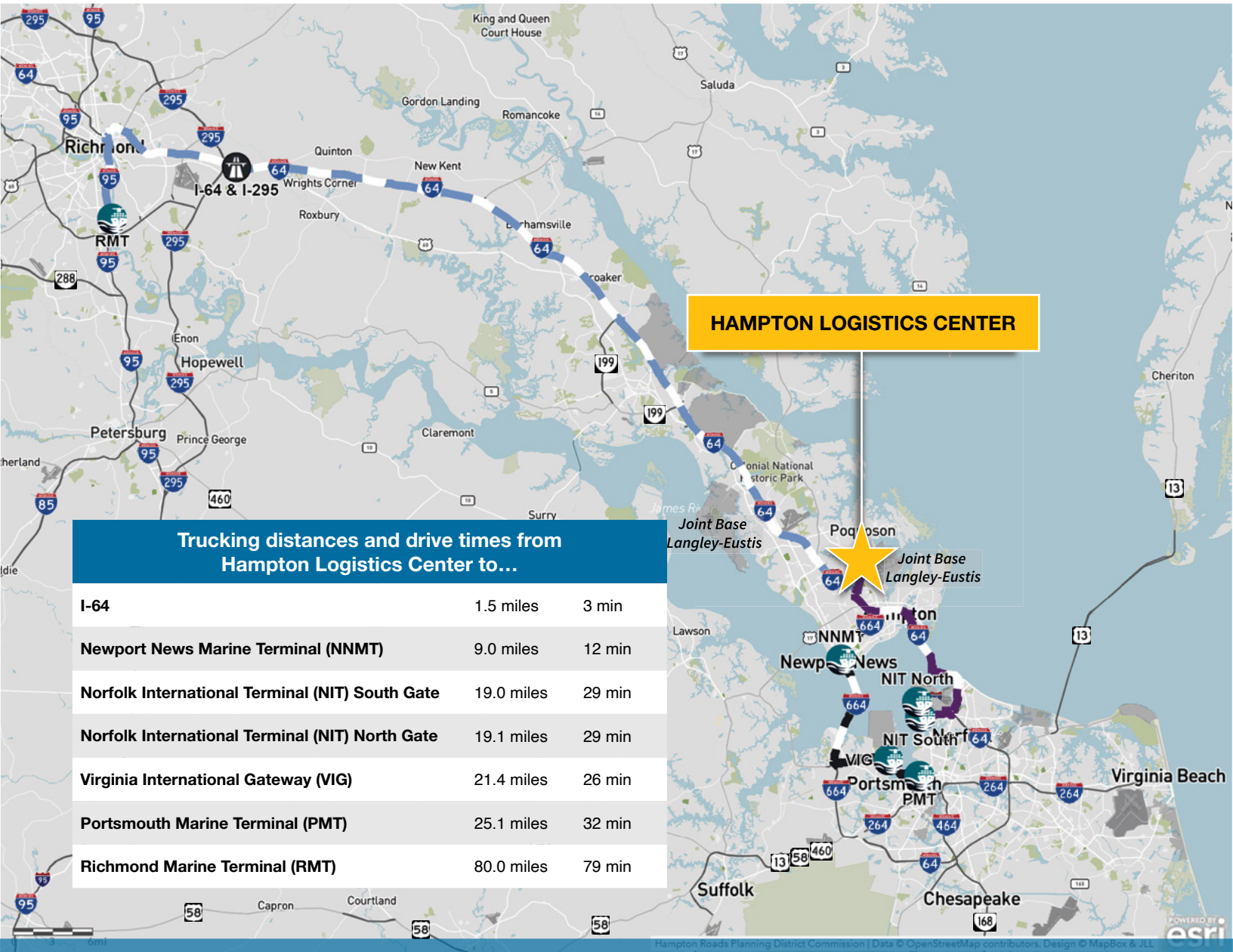


FedEx



# Hampton Logistics Center

North Campus Pkwy., and Neil Armstrong Pkwy.,  
Hampton, VA 23666



## GREGG CHRISTOFFERSEN

Managing Director  
757 348 1477  
gregg.christoffersen@jll.com

## TODD SCHOLSOHN

Senior Associate  
757 938 1562  
todd.scholsohn@jll.com

LEASING BY



DEVELOPED BY



Although information has been obtained from sources deemed reliable, JLL does not make any guarantees, warranties or representations, express or implied, as to the completeness or accuracy as to the information contained herein. Any projections, opinions, assumptions or estimates used are for example only. There may be differences between projected and actual results, and those differences may be material. JLL does not accept any liability for any loss or damage suffered by any party resulting from reliance on this information. If the recipient of this information has signed a confidentiality agreement with JLL regarding this matter, this information is subject to the terms of that agreement.  
©2025 Jones Lang LaSalle Brokerage, Inc. All rights reserved.