

### PROPERTY DETAILS

- 97,430 SF Industrial Park
- Industrial, Office, and Flex Units Available For Lease
- Triple Net Leases
- Conveniently located south of Copans on Powerline
- Excellent access to I-95 and Florida Turnpike

### ABOUT PROPERTY



#### PRICE

\$15.95 - 16.95 / SF / Yr (NNN)



#### YEAR BUILT

1986



#### AVAILABLE SF

1,000+ SF



#### PARKING

Surface



#### LOCATION

Pompano Beach, FL

For more information:

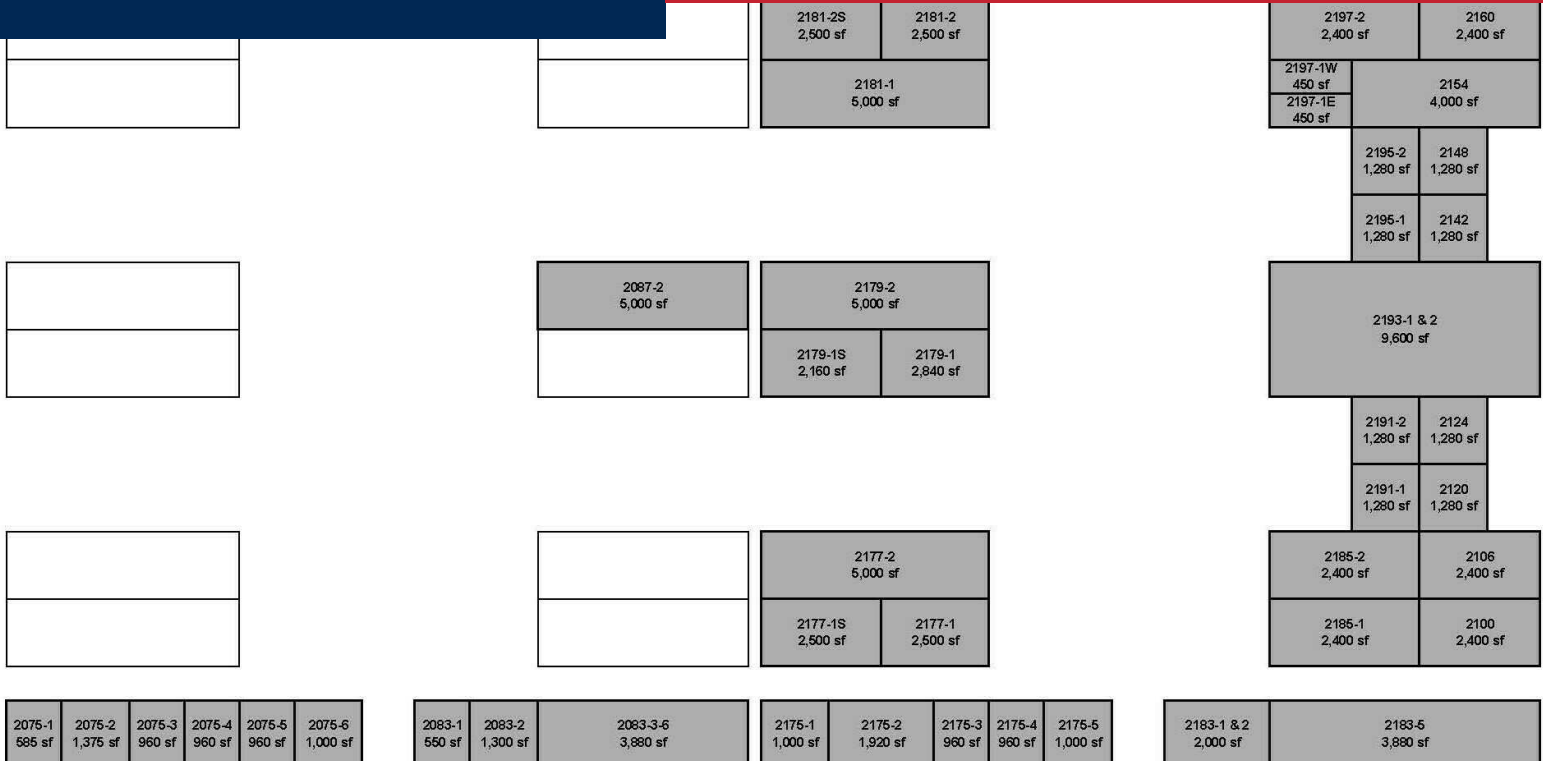
**Calder Alfano**

954.652.2041 | [Calfano@Bergercommercial.Com](mailto:Calfano@Bergercommercial.Com)  
[bergercommercial.com](http://bergercommercial.com)

**Jordan Beck**

954.652.2033 | [Jbeck@Bergercommercial.Com](mailto:Jbeck@Bergercommercial.Com)





**LEASE INFORMATION**

Lease Type:	NNN	Lease Term:	3 Years
Total Space:	1,000 - 2,920 SF	Lease Rate:	\$15.95 - \$16.95 SF/yr

**AVAILABLE SPACES**

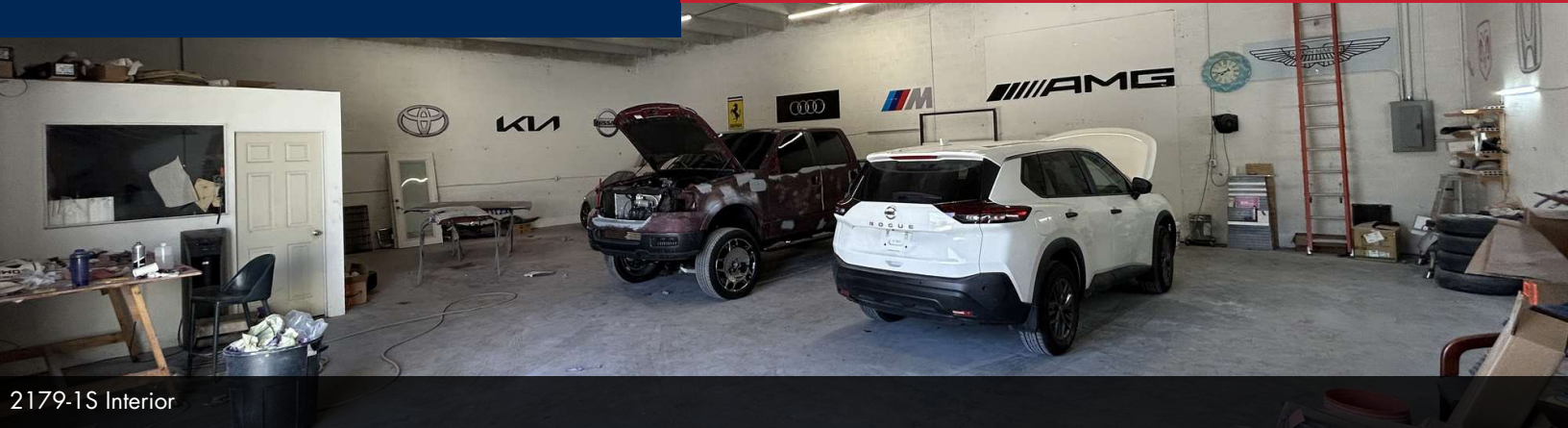
SUITE	TENANT	SIZE (SF)	LEASE TYPE	LEASE RATE	DESCRIPTION
2075-1	-	585 SF	NNN	\$15.95 SF/yr	-
2075-6	-	1,000 SF	NNN	\$16.00 SF/yr	-
2120	Available	1,280 - 2,560 SF	NNN	\$15.95 SF/yr	50% Warehouse / 50% Office
2124	Available	1,280 - 2,560 SF	NNN	\$15.95 SF/yr	20% Warehouse / 80% Office
2142	-	1,280 SF	NNN	\$15.95 SF/yr	-
2175-3	Available	1,000 - 2,920 SF	NNN	\$16.95 SF/yr	100% Office
2179-1S	Available	2,160 SF	NNN	\$15.95 SF/yr	100% Warehouse
2181-2S	-	2,500 - 2,950 SF	NNN	\$14.95 SF/yr	-
2197-1W	-	450 - 2,950 SF	NNN	\$14.95 SF/yr	-

For more information:

**Calder Alfano**  
 954.652.2041 | Calfano@Bergercommercial.Com  
 bergercommercial.com

**Jordan Beck**  
 954.652.2033 | Jbeck@Bergercommercial.Com





2179-1S Interior



2120 Exterior



2124 Exterior

For more information:

**Calder Alfano**

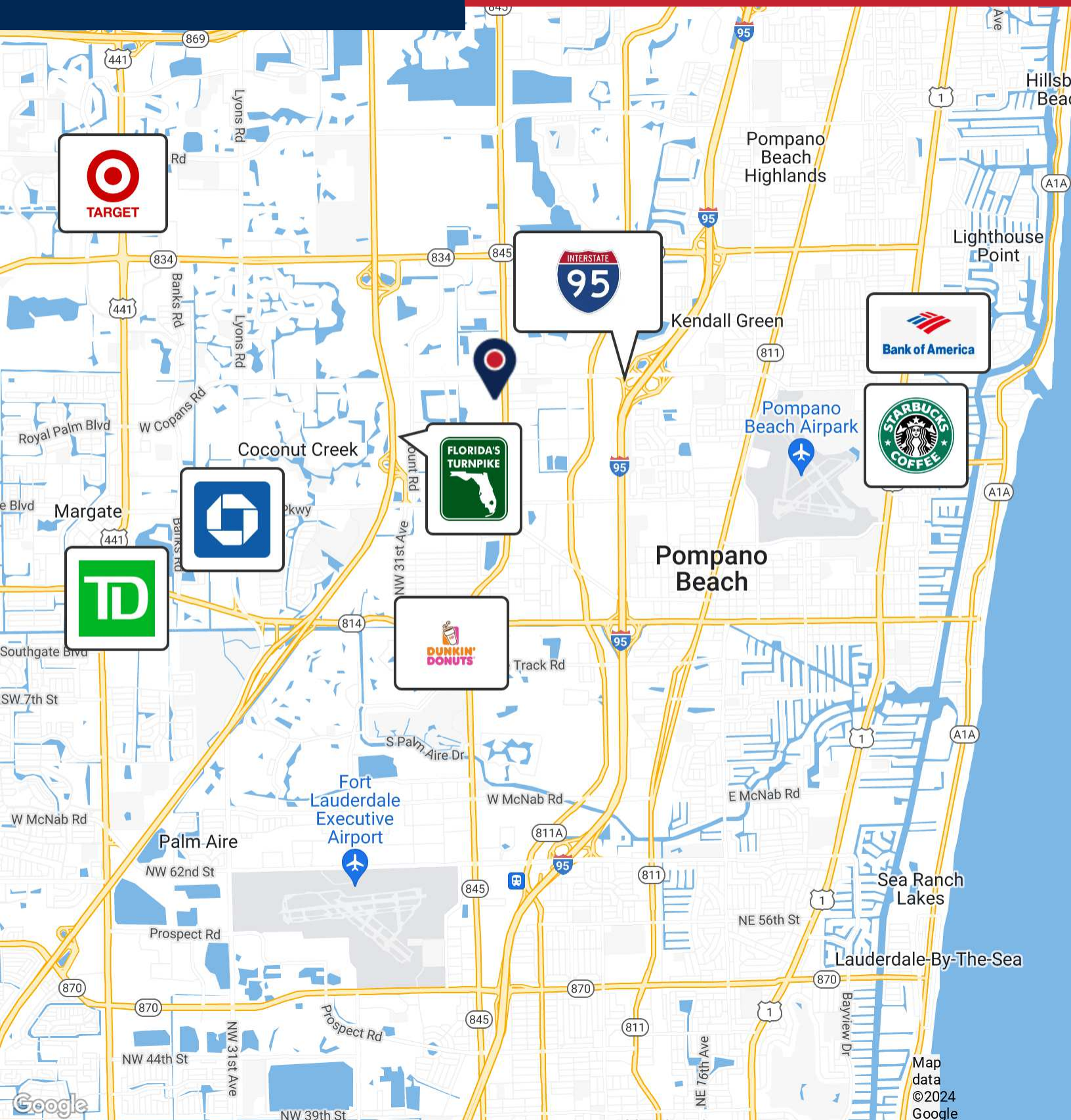
954.652.2041 | [Calfano@Bergercommercial.Com](mailto:Calfano@Bergercommercial.Com)  
[bergercommercial.com](http://bergercommercial.com)

**Jordan Beck**

954.652.2033 | [Jbeck@Bergercommercial.Com](mailto:Jbeck@Bergercommercial.Com)



COMMERCIAL BROKERAGE AND PROPERTY MANAGEMENT



For more information:

**Calder Alfano**

954.652.2041 | [Calfano@Bergercommercial.Com](mailto:Calfano@Bergercommercial.Com)  
[bergercommercial.com](http://bergercommercial.com)

**Jordan Beck**

954.652.2033 | [jbeck@Bergercommercial.Com](mailto:jbeck@Bergercommercial.Com)



COMMERCIAL BROKERAGE AND PROPERTY MANAGEMENT