

2155-2157 SE OCEAN BLVD, STUART, FL 34996

OFFICE SUITES  
IN SMITHFIELD  
PLAZA

FOR LEASE



ALEX AYDELOTTE  
Broker | Principal  
O: 772.223.3646 C: 772.263.1130  
E: alex@florida-commercial.net

800 SF -  
1,250 SF

1-2 SUITES  
STUART, FL

309 SE Osceola Street #104 • Stuart, FL 34994 • 772.223.3646 • florida-commercial.net

©Florida Commercial 2021 • This offering is subject to errors, prior to sale/lease, withdrawal, or change in price, terms or conditions without notice.

# EXECUTIVE SUMMARY

2155-2157 SE OCEAN BLVD, STUART, FL 34996 | OFFICE SUITES IN SMITHFIELD PLAZA

## SPECS

Suite #2155 Size:	800 SF (or 2,028 for both spaces)
Suite #2157 Size:	1,250 SF (or 2,028 for both spaces)
Price:	\$15 Per SF / NNN + \$5.50 CAM
Term:	3-5 Years
Building Size:	14,103
Zoning:	B-1
Renovated:	2007

## PROPERTY OVERVIEW

Smithfield Plaza is a well-positioned medical, professional office, and retail center located at the signalized intersection of East Ocean Boulevard and Monterey Road in Stuart, Martin County, Florida. The property benefits from strong visibility and traffic exposure along one of the area's primary corridors and is conveniently situated southeast of Martin Memorial North Hospital, with close proximity to downtown Stuart and the surrounding affluent communities of Sewall's Point, Sailfish Point, and Hutchinson Island. The plaza offers ample on-site parking, security cameras, and monitored common areas, and is home to a strong mix of established medical, financial, and service-oriented tenants. Available space features prominent glass storefronts and a central plaza location, offering excellent visibility and natural light. Suites 2155-2157 can be leased individually or combined, with one restroom per space (two total). The layout is mostly open with selective divider walls, plus rear storage. Ideal for medical or professional users seeking a flexible, efficient workspace in a high-traffic center.



**ALEX AYDELLOTTE**  
Broker | Principal  
O: 772.223.3646 C: 772.263.1130  
E: alex@florida-commercial.net

**800 SF -  
1,250 SF**

**1-2 SUITES  
STUART, FL**



**FC** FLORIDA  
COMMERCIAL  
REAL ESTATE COMPANY



**FC** FLORIDA  
COMMERCIAL  
REAL ESTATE COMPANY



**FC** FLORIDA  
COMMERCIAL  
REAL ESTATE COMPANY



**FC** FLORIDA  
COMMERCIAL  
REAL ESTATE COMPANY

**FC** FLORIDA  
COMMERCIAL  
REAL ESTATE COMPANY



**ALEX AYDELOTTE**  
Broker | Principal  
O: 772.223.3646 C: 772.263.1130  
E: alex@florida-commercial.net

**800 SF -  
1,250 SF**

**1-2 SUITES  
STUART, FL**

309 SE Osceola Street #104 • Stuart, FL 34994 • 772.223.3646 • florida-commercial.net

©Florida Commercial 2021 • This offering is subject to errors, prior to sale/lease, withdrawal, or change in price, terms or conditions without notice.



**FC** FLORIDA  
COMMERCIAL  
REAL ESTATE COMPANY



**FC** FLORIDA  
COMMERCIAL  
REAL ESTATE COMPANY



**FC** FLORIDA  
COMMERCIAL  
REAL ESTATE COMPANY



**FC** FLORIDA  
COMMERCIAL  
REAL ESTATE COMPANY



**FC** FLORIDA  
COMMERCIAL  
REAL ESTATE COMPANY

**FC** FLORIDA  
COMMERCIAL  
REAL ESTATE COMPANY



**ALEX AYDELOTTE**  
Broker | Principal  
O: 772.223.3646 C: 772.263.1130  
E: alex@florida-commercial.net

**800 SF -  
1,250 SF**

**1-2 SUITES  
STUART, FL**



**FC** **FLORIDA  
COMMERCIAL**  
REAL ESTATE COMPANY



**ALEX AYDELLOTTE**  
Broker | Principal  
O: 772.223.3646 C: 772.263.1130  
E: alex@florida-commercial.net

**1,014 SF -  
2,028 SF**

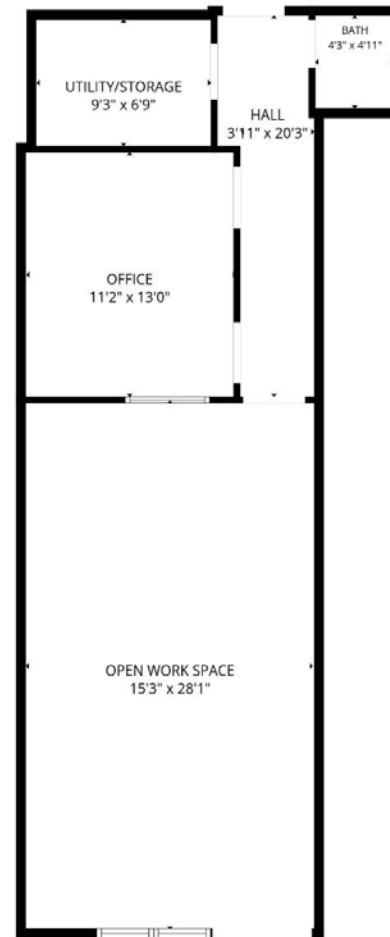
**1-2 SUITES  
STUART, FL**

309 SE Osceola Street #104 • Stuart, FL 34994 • 772.223.3646 • florida-commercial.net

©Florida Commercial 2021 • This offering is subject to errors, prior to sale/lease, withdrawal, or change in price, terms or conditions without notice.

# FLOOR PLAN - UNIT 2155

2155-2157 SE OCEAN BLVD, STUART, FL 34996 | OFFICE SUITES IN SMITHFIELD PLAZA



FLOOR PLAN CREATED BY CUBICASA APP. MEASUREMENTS DEEMED HIGHLY RELIABLE BUT NOT GUARANTEED.



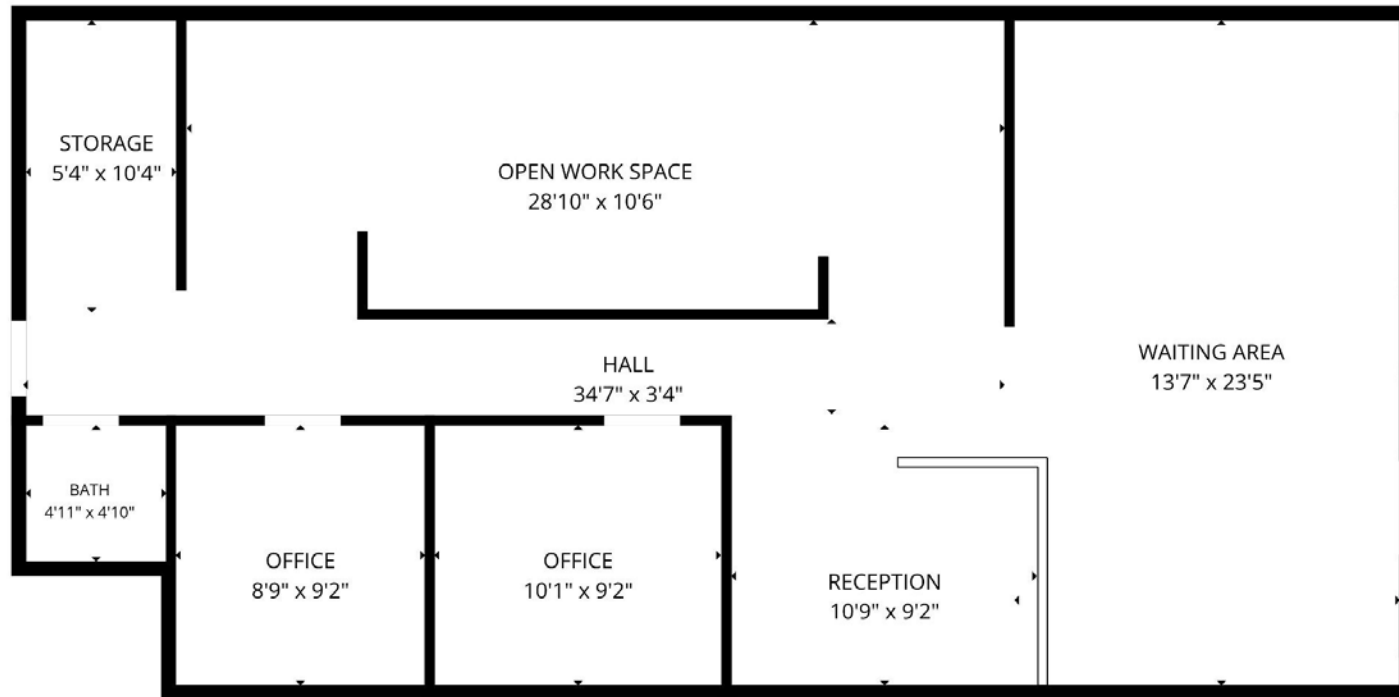
**ALEX AYDELOTTE**  
Broker | Principal  
O: 772.223.3646 C: 772.263.1130  
E: alex@florida-commercial.net

**800 SF -  
1,250 SF**

**1-2 SUITES  
STUART, FL**

# FLOOR PLAN - UNIT 2157

2155-2157 SE OCEAN BLVD, STUART, FL 34996 | OFFICE SUITES IN SMITHFIELD PLAZA



FLOOR PLAN CREATED BY CUBICASA APP. MEASUREMENTS DEEMED HIGHLY RELIABLE BUT NOT GUARANTEED.



**ALEX AYDELOTTE**  
Broker | Principal  
O: 772.223.3646 C: 772.263.1130  
E: alex@florida-commercial.net

**800 SF -  
1,250 SF**

**1-2 SUITES  
STUART, FL**

# MAP & REPORT

2155-2157 SE OCEAN BLVD, STUART, FL 34996 | OFFICE SUITES IN SMITHFIELD PLAZA



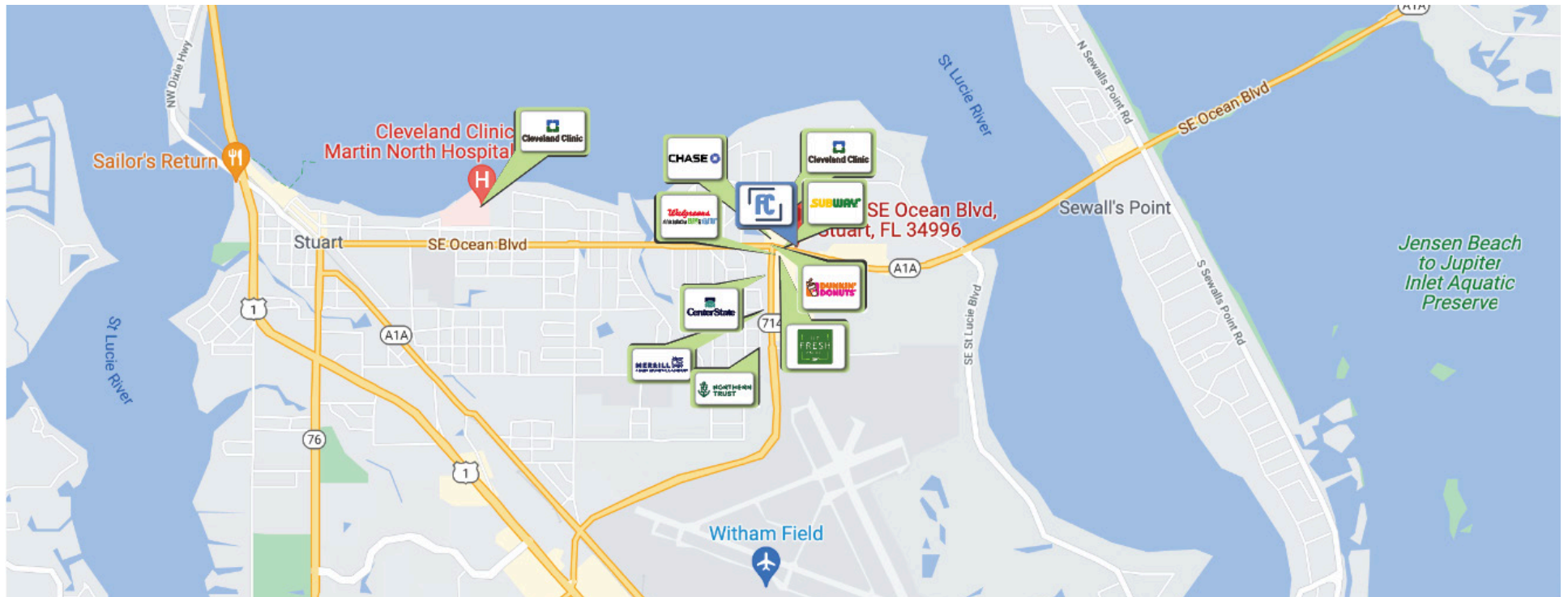
## POPULATION

	1 MILE	3 MILES	5 MILES
Population	5,280	35,671	86,521
Median age	57.2	48.7	48.4



## HOUSEHOLDS & INCOME

	1 MILE	3 MILES	5 MILES
Total households	2,586	29.5K	68.1K
# of persons per HH	2.0	2.2	2.3
Average HH income	\$66,465	\$69,619	\$78,520



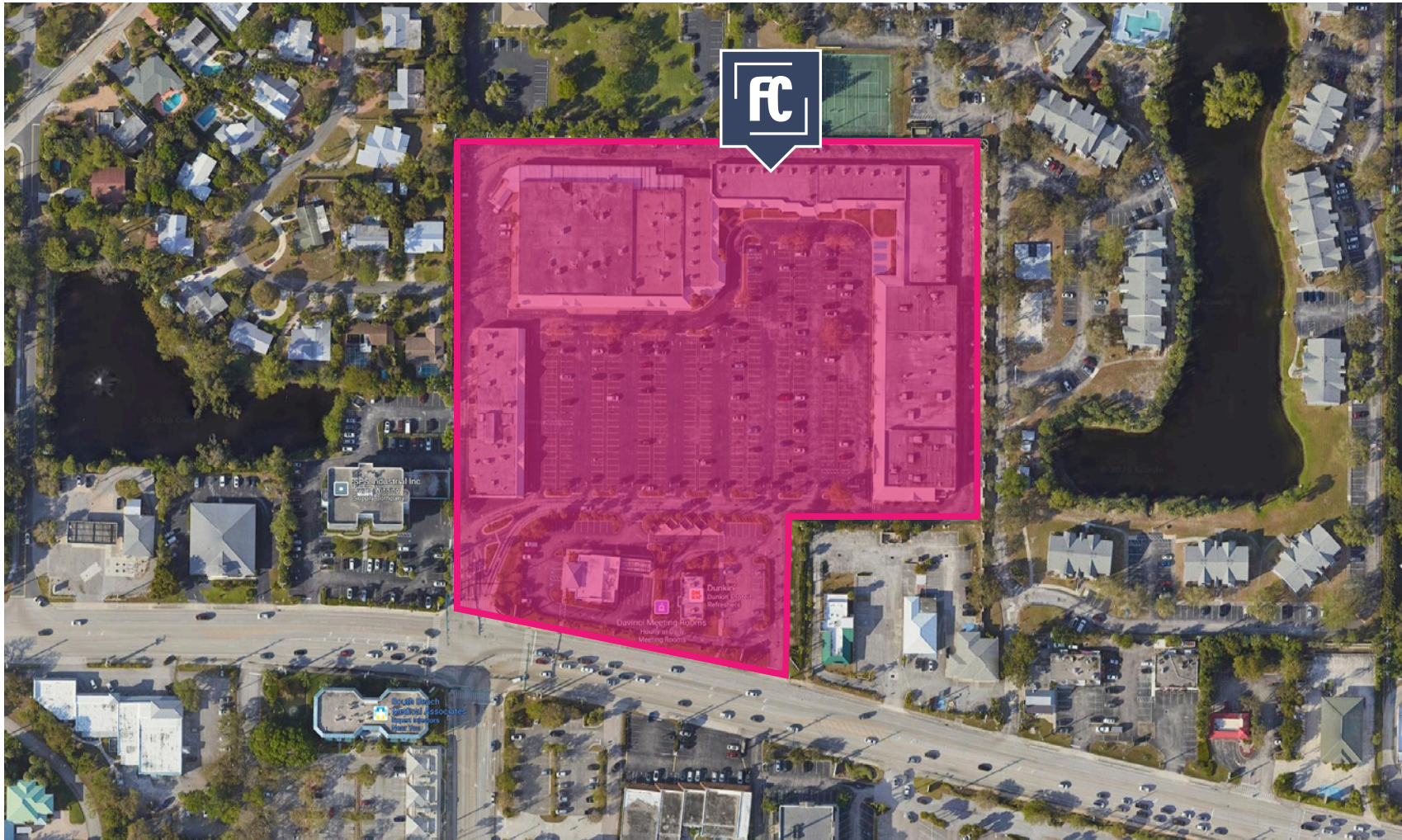
**ALEX AYDELOTTE**  
 Broker | Principal  
 O: 772.223.3646 C: 772.263.1130  
 E: alex@florida-commercial.net

**800 SF -  
 1,250 SF**

**1-2 SUITES  
 STUART, FL**

# LOCATION

2155-2157 SE OCEAN BLVD, STUART, FL 34996 | OFFICE SUITES IN SMITHFIELD PLAZA



**ALEX AYDELLOTTE**  
Broker | Principal  
O: 772.223.3646 C: 772.263.1130  
E: alex@florida-commercial.net

**800 SF -  
1,250 SF**

**1-2 SUITES  
STUART, FL**