

TAMPA INTERNATIONAL BUSINESS CENTER

 W Idlewild Avenue | Tampa, FL 33634

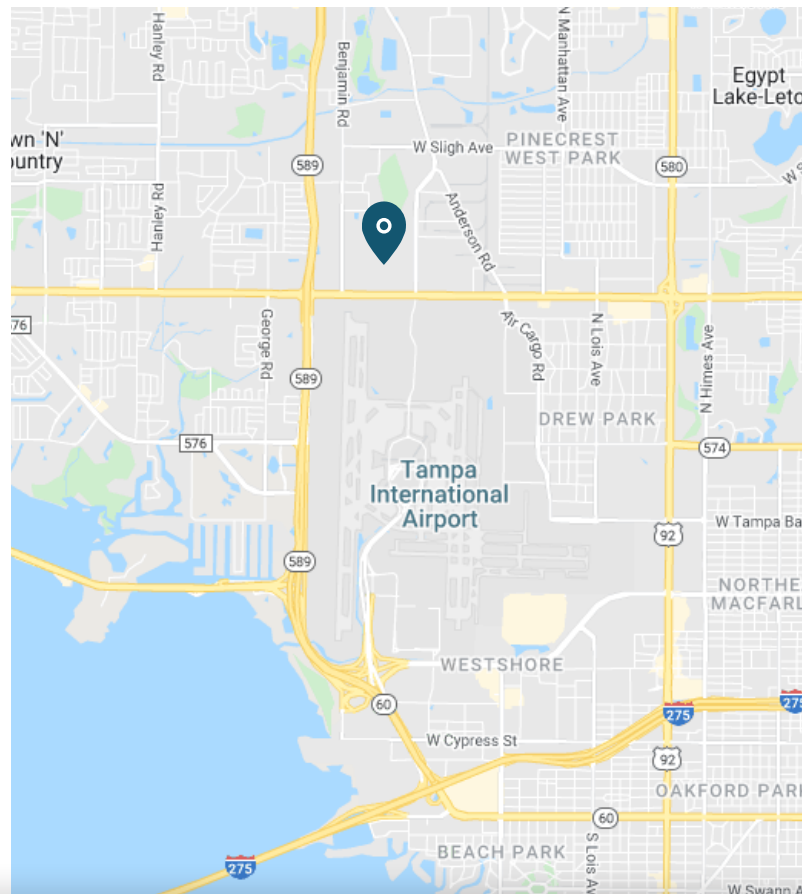
Flex Office Space For Lease



PROPERTY HIGHLIGHTS

[5550 W Idlewild Avenue - Building D:](#)
[Suite 150: 29,845 SF](#)

- 5.00/1,000 SF parking ratio
- Westshore / NW Tampa Submarket
- Less than a mile to the Veteran's Expressway and across from Tampa International Airport
- Convenient to Westshore, major malls, retail and restaurants
- Traffic signal at Hoover & W Idlewild provides direct access to property
- On-site management and building engineers



MATT ALEXANDER | Senior Director
813.559.2006 | Matthew.Alexander@FranklinSt.com

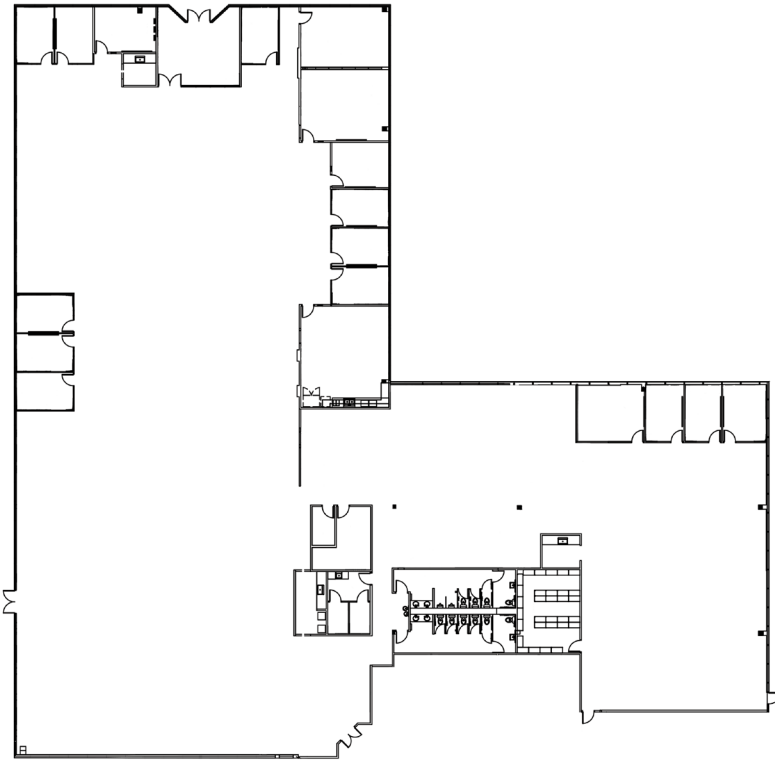
NICK POLO | Senior Associate
813.682.6194 | Nick.Polo@FranklinSt.com



LICENSED REAL ESTATE BROKER | FranklinSt.com

FLOOR PLAN - BUILDING D

Suite 150: 29,845 SF



SITE PLAN

