

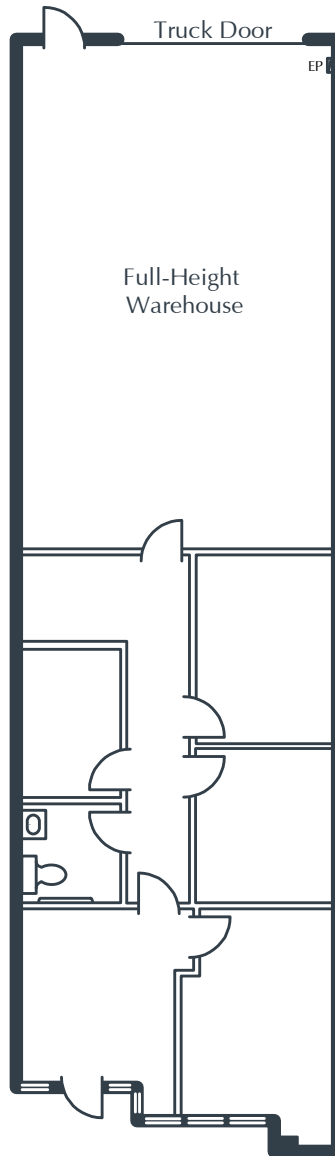
# MISSION VIEJO COMMERCE PARK

23382 Madero, Suite H  
Mission Viejo, CA

1,440 Square Feet

\$1.65 SF/MO

Triple Net



## NOTES

- Reception
- Window Office
- 2 Interior Offices
- Restroom
- Storage Room
- Large Open Work Area
- Ground-Level Truck Door
- Approximately 660 sq. ft. of Full-Height Warehouse
- Part of a Professionally Managed Business Park

Created by Olen Commercial Realty Corp., 2022.  
Information is not to be published or copied without  
written approval. Square footage and floor plans are  
estimates and should be separately verified. All rates,  
terms, floor plans, and building facts are subject to  
change without notice.

ea 01.07.2026

## ELLYSSA DERRY

Senior Leasing Director  
949.719.7204  
ederry@olen.com



Seven Corporate Plaza  
Newport Beach, CA  
949.644.6536  
www.olen.com