

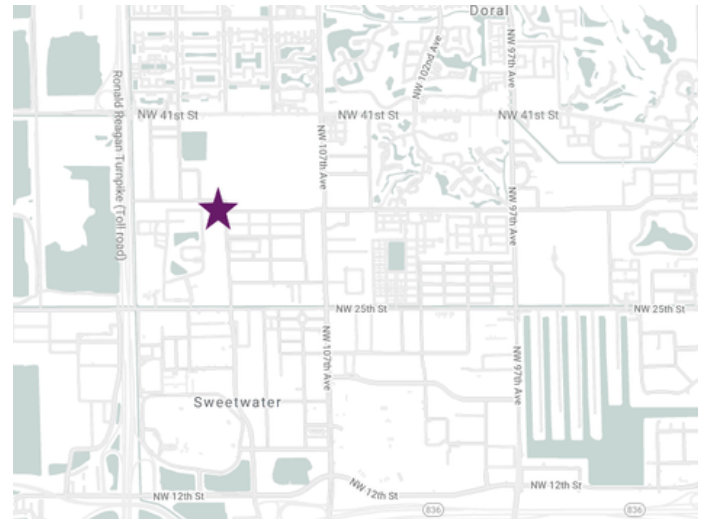
SAKHIL CENTER AT DORAL CONDO OFFICE **AVAILABLE FOR LEASE**

3300 NW 112 AVENUE, UNIT #13, DORAL, FL 33172 | +/- 200-1000 SF



PROPERTY HIGHLIGHTS

~ 200-1,000 SF OFFICE SPACES
AVAILABLE
OFFICE SPACE ON 1ST FLOOR
PRIVATE OFFICES
CONFERENCE AREA
LARGE BULLPEN AREA
CLOSE PROXIMITY TO FL TURNPIKE &
DOLPHIN EXPY



LEASE RATE:
\$19.00 PSF

FULL SERVICE (NET OF JANITORIAL)
PLUS FL SALES TAX



Reshma Parvani, SIOR
Broker
305-342-9576
rparvani@parvanigroup.com

Vishal Parvani, SIOR
Associate
786-205-5579
vparvani@parvanigroup.com

NOTE: This offering subject to errors, omissions, prior sale or withdrawal.

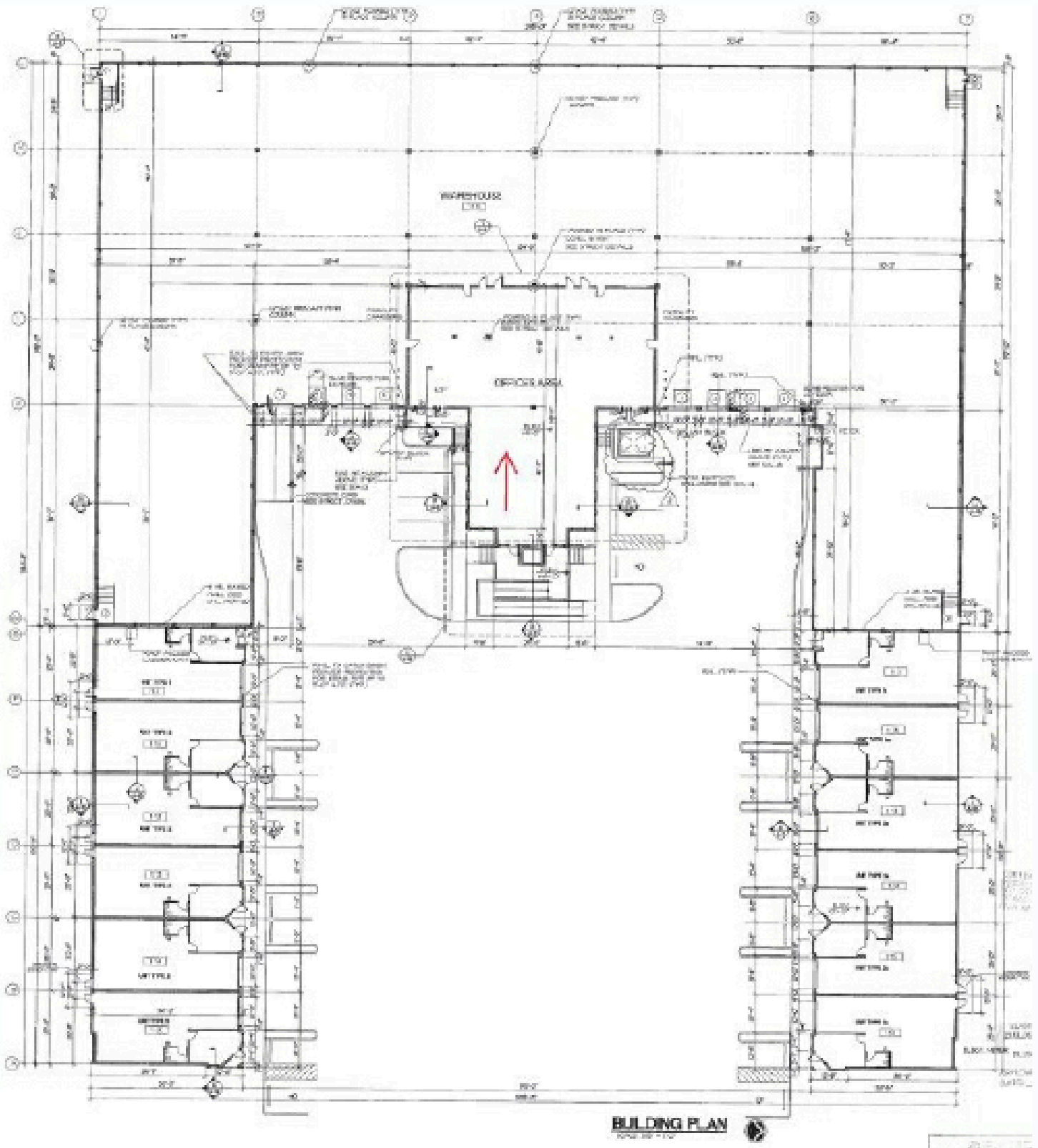
PHOTOS



Reshma Parvani, SIOR
Broker
305-342-9576
rparvani@parvanigroup.com

Vishal Parvani, SIOR
Associate
786-205-5579
vparvani@parvanigroup.com

PLANS



Reshma Parvani, SIOR
Broker
305-342-9576
rparvani@parvanigroup.com

Vishal Parvani, SIOR
Associate
786-205-5579
vparvani@parvanigroup.com