

7 SWALLOW PLACE

W1

Fully fitted offices 5,200 - 12,660 sq ft
Available now

Workplaces | THE CROWN
ESTATE

Welcome to Swallow Place

Swallow place offers fully fitted, flexible office space – available now.

Tucked away on a quiet street just moments from Oxford Circus, Swallow Place offers a rare opportunity to lease high-quality, plug-and-play office space in one of London's most dynamic West End locations.

Available from 5,200 to 12,660 sq. ft, the fully fitted and furnished workspace is ready for immediate occupation – complete with meeting rooms, breakout areas, and collaborative spaces designed for modern working.

Positioned between Soho, Fitzrovia, Mayfair and Regent Street, Swallow Place puts world-class retail, restaurants, and transport connections at your doorstep. Whether you're entertaining clients, attracting top talent, or simply seeking a vibrant location with practical flexibility, this is workspace that works for you.

Flexible lease terms available. Arrange a viewing through our agents today.





4th Floor

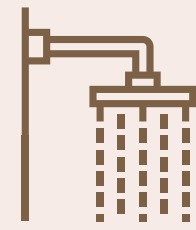


4th Floor

Specification



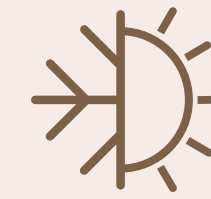
Concierge
Reception



Shower and
Changing Facilities*



Break Out
Space*



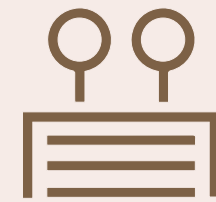
Air Conditioning



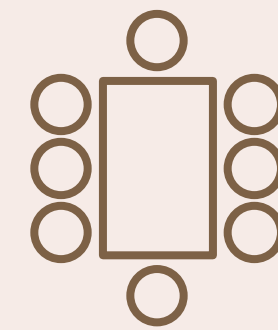
EPC C



Fibre Ready and Wifi
in Common Areas



Communal Roof
Terrace*



Complimentary
Bookable Meeting
Rooms*



Fully Fitted
and Furnished



Cycle Storage-
Including Brompton
Bike Lockers*

*At Swallow Place

7 Swallow Place

Area Schedule

FLOOR	NIA SQ. FT.	NIA SQ. M.	AVAILABILITY
6	5,238	487	Available Now
4	7,422	690	Available Now

LEASE

Flexible leases available from The Crown Estate

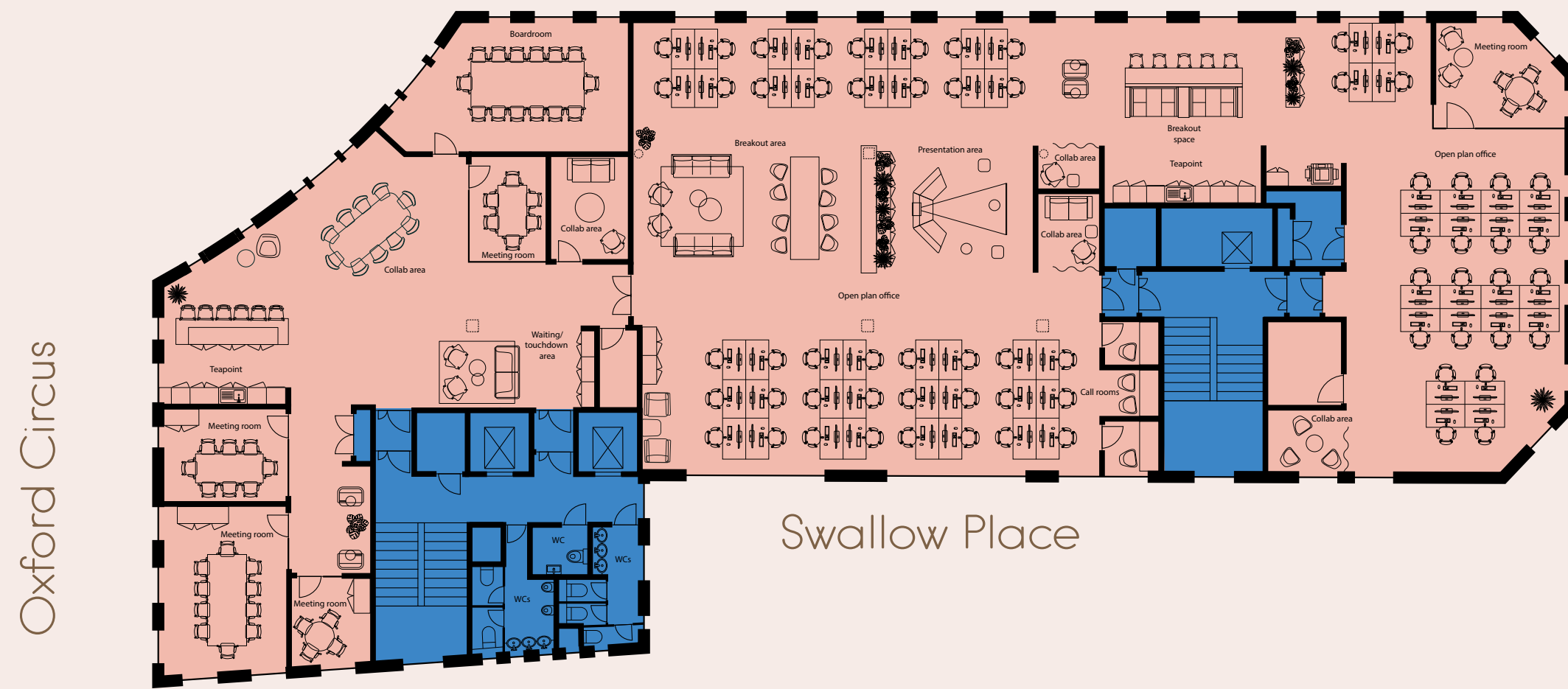
RENT

Rent £65 psf - 6th Floor
Rent £75 psf - 4th Floor



4th Floor

Regent Street



Swallow Place

Oxford Circus

64

DESKS

Current layout

5

MEETING ROOMS

2

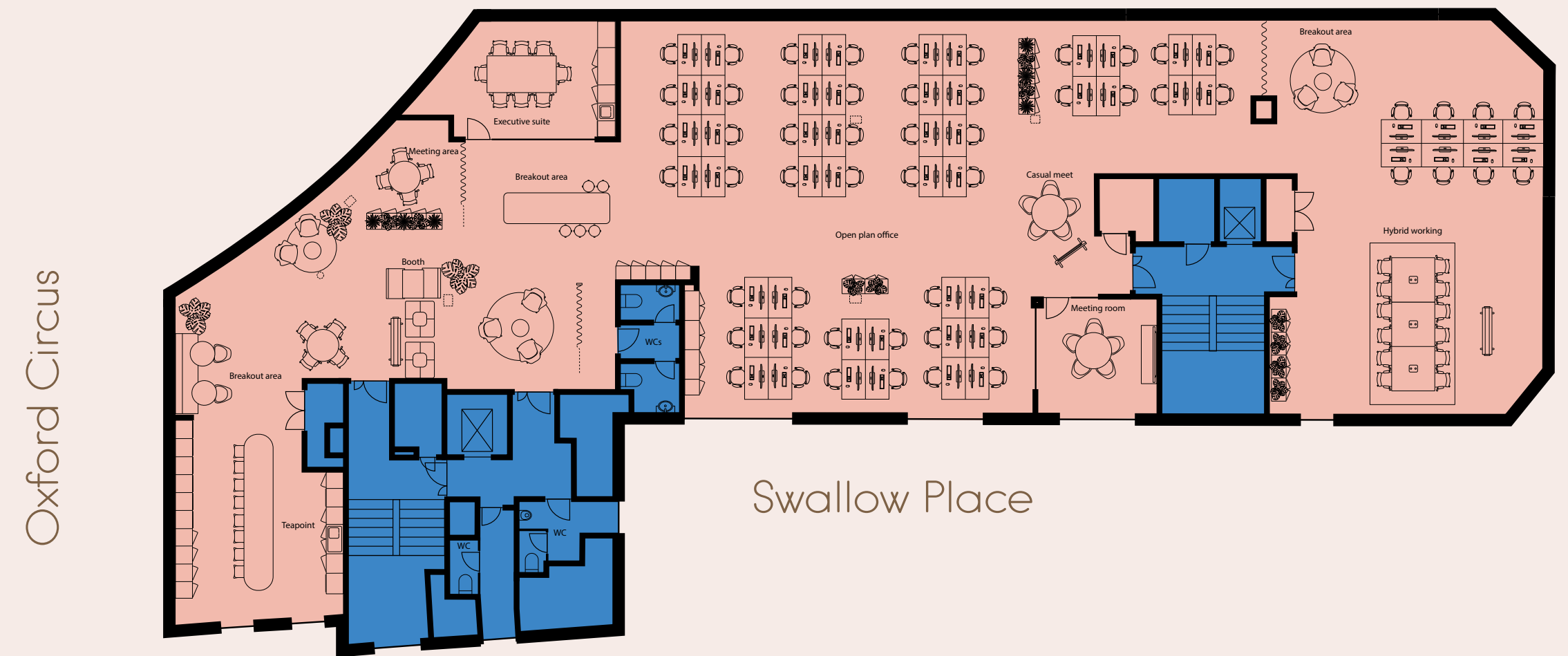
TEA POINTS

2

1 PERSON WORK BOOTHS

6th Floor

Regent Street



Swallow Place

Oxford Circus



56

DESKS

Current layout

2

MEETING ROOMS

1

TEA POINT

3

BREAKOUT DESKS

12

HYBRID WORKING DESKS

Core
Office Area

Communal Club Lounge & Terrace

- Bookable for private events
- Complimentary refreshments
- Bookable on-site meeting rooms
- Generous roof terraces overlooking Oxford Street







Local Amenities

A richly served cosmopolitan neighbourhood



Local Amenities & Connectivity

RESTAURANTS

1. Little Social
2. Goodman, Mayfair
3. Beast
4. Sketch
5. The MAINE, Mayfair
6. The Cocktail Club, Oxford Circus
7. Artesian
8. Burger & Lobster, Bond Street
9. LPM Restaurant & Bar
10. KIN Cafe
11. Ergon Deli
12. Willows On The Roof Restaurant
13. Market Halls Oxford Street

GYMS

1. Marshall St. Spa & Leisure Centre
2. Fitness First
3. Barry's SOHO
4. The Gym Group
5. ROWBOTS Fitzrovia
6. West 1 Health
7. 1Rebel
8. F45 Little Portland Street

HOTELS

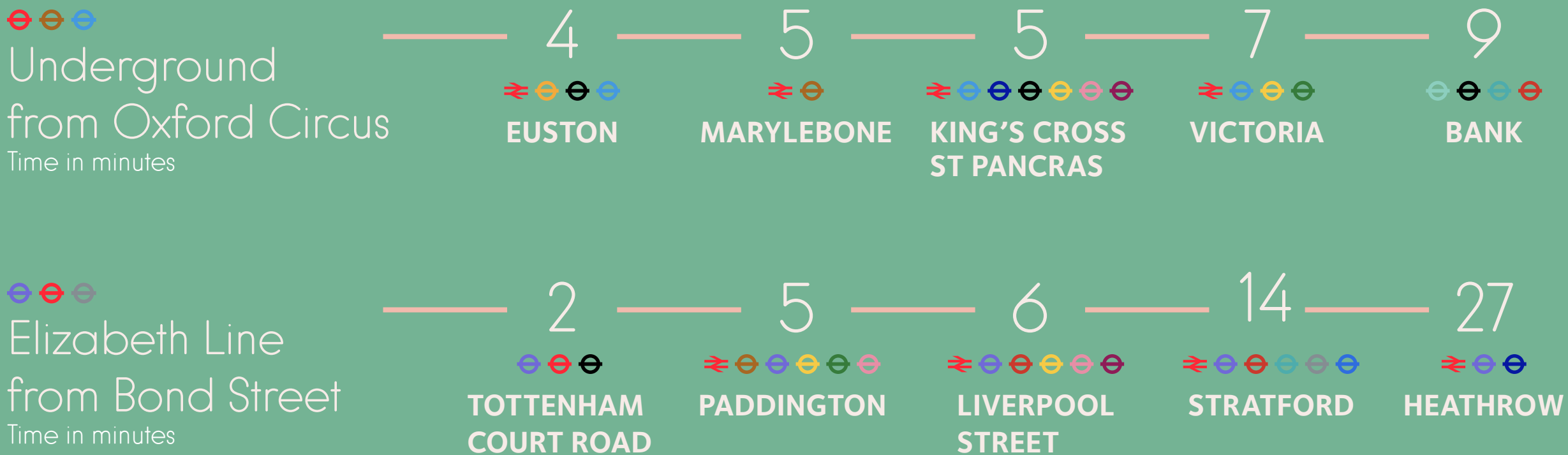
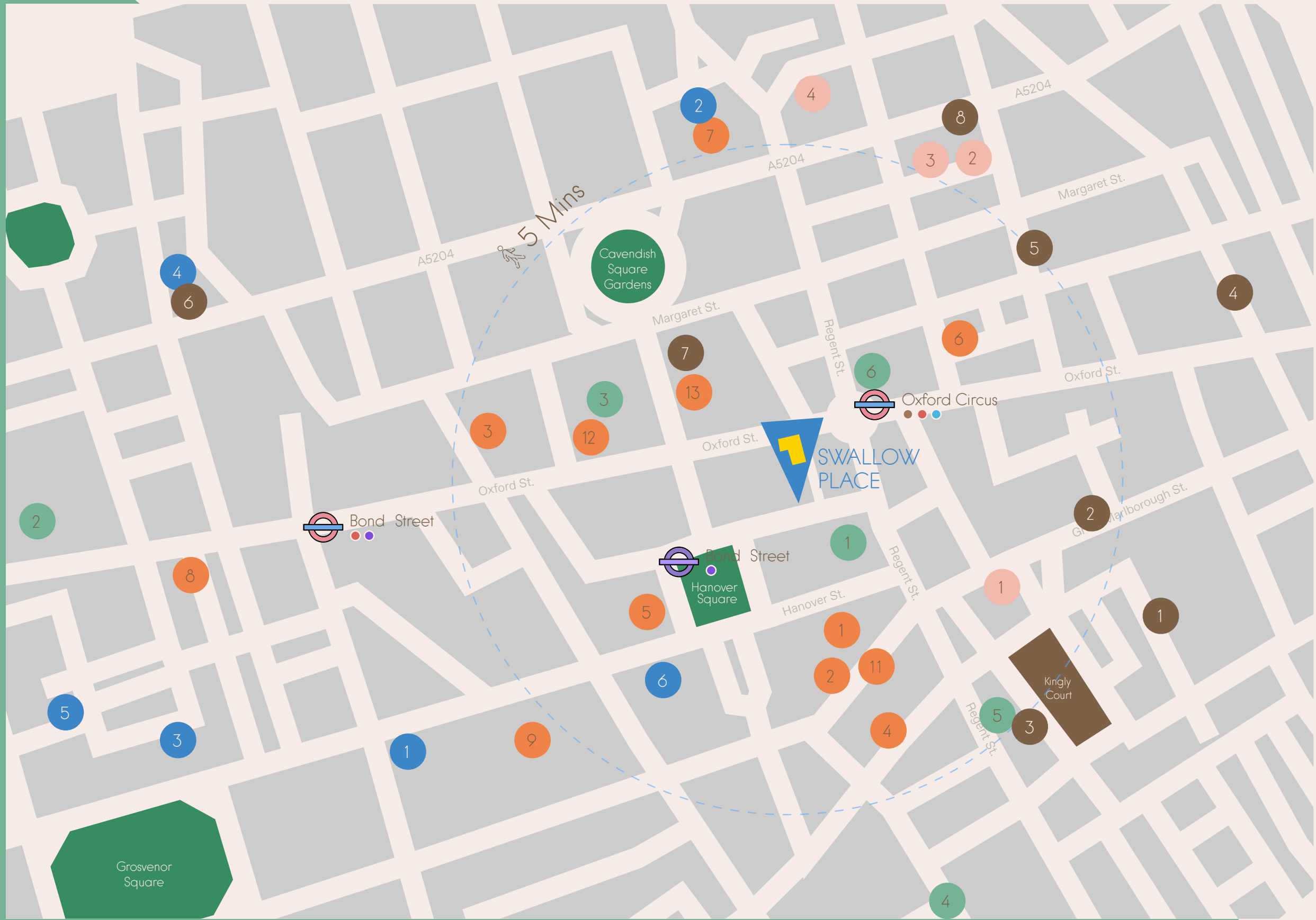
1. Claridge's
2. The Langham, London
3. London Marriott Hotel
4. The Mandeville Hotel
5. The Beaumont
6. Mandarin Oriental, Mayfair

SHOPS

1. Apple Regent Street
2. Selfridges
3. John Lewis & Partners
4. Savile Row
5. Hamleys
6. Nike Town

OUR FAVOURITES

1. Liberty London
2. F45 Oxford Circus
3. Burger & Lobster Oxford Circus
4. The Nest



For more information:

Workplaces |  THE CROWN ESTATE

George Walker

07783 770 849

george.walker@thecrownestate.co.uk

Alka Jotangia

07826 946 336

alka.jotangia@thecrownestate.co.uk

Sarah Stanley

07407 290 651

sarah.stanley@thecrownestate.co.uk

Samantha Jones

07353 112 979

samantha.jones@thecrownestate.co.uk

CBRE

Georgina Willoughby

07788 706 031

georgina.willoughby@cbre.com

Eimhear Mccosker

07353 897 681

eimhear.mccosker@cbre.com

Misrepresentation Disclaimer

1. Particulars: These particulars are not an offer or contract, nor part of one. You should not rely on statements by CBRE and Workplaces in the particulars or by word of mouth or in writing ("information") as being factually accurate about the property, its condition or its value. Neither CBRE and Workplaces nor any joint agent has any authority to make any representations about the property, and accordingly any information given is entirely without responsibility on the part of the agents, seller(s) or lessor(s). 2. Photos/GCI's etc: The photos/GCI's show only certain parts of the property as they appeared at the time they were taken. Areas, measurements and distances given are approximate only. 3. Regulations etc: Any reference to alterations to, or use of, any part of the property does not mean that any necessary planning, building regulations or other consent has been obtained. A buyer or lessee must find out by inspection or in other ways that these matters have been properly dealt with and that all information is correct. 4. VAT: The VAT position relating to the property may change without notice. July 2025