

Lincoln Park

37 Richard Way SW

Katie Sapiha
Vice President
+1 403 750 0529
katie.sapiha@cbre.com

Stuart Watson
Senior Vice President
+1 403 750 0540
stuart.watson@cbre.com



Lincoln Park

37 Richard Way SW
Calgary, AB

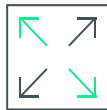
Property Information

Year Built	2000
Available Area	Suite 302: 1,400 SF
Date Available	Immediately
Operating Costs	\$17.95 per SF
Basic Rent	Market
Parking Ratio	1 stall per 259 SF <i>Surface</i>
Parking Rate	\$35 per stall per month <i>Surface</i>

Property Highlights



"A" Class office space
in Southwest Calgary



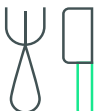
Demising options
available



Can accommodate
medical uses



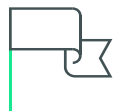
Easy access to
Crowchild and
Glenmore Trail



Multiple food and
drink amenities in
immediate area



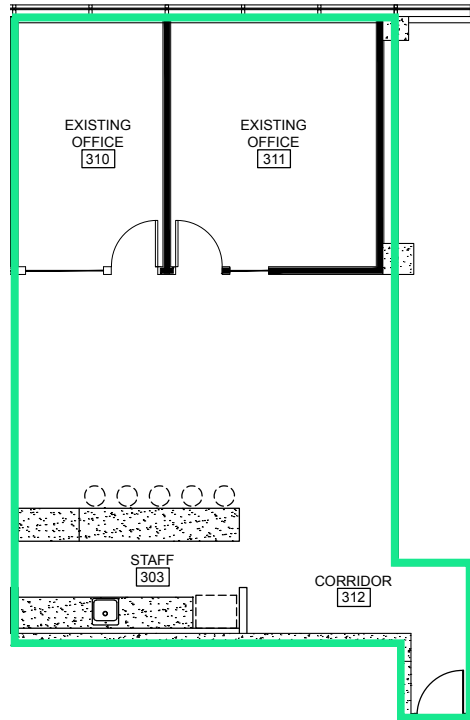
Additional on-site
parking available



Building signage
visible from Glenmore
Trail West

Show Suite

Suite 302: 1,400 SF



Lincoln Park

37 Richard Way SW | Calgary, AB

For Lease



- Subject Property:**
37 Richard Way SW
- Amenities**
- 1 Starbucks
- 2 Sushi Hanami
- 3 7-Eleven
- 4 Pho Express
- 5 Weasel Head Bar & Grill
- 6 Clever Daycare
- 7 Mount Royal University
- 8 Calgary Drug Mart
- 9 Tim Hortons
- 10 Gong Cha Bubble Tea
- 11 Logix Hair Salon
- 12 Spot On Kitchen & Bar
- 13 Pita Pit
- 14 Domino's Pizza
- 15 Freshii
- 16 Wild Rose Brewery
- 17 Flames Community Arenas

Contact Us

Stuart Watson

Senior Vice President

+1 403 750 0540

stuart.watson@cbre.com

Katie Sapiha

Vice President

+1 403 750 0529

katie.sapiha@cbre.com

This disclaimer shall apply to CBRE Limited, Real Estate Brokerage, and to all other divisions of the Corporation; to include all employees and independent contractors ("CBRE"). All references to CBRE Limited herein shall be deemed to include CBRE, Inc. The information set out herein, including, without limitation, any projections, images, opinions, assumptions and estimates obtained from third parties (the "Information") has not been verified by CBRE, and CBRE does not represent, warrant or guarantee the accuracy, correctness and completeness of the Information. CBRE does not accept or assume any responsibility or liability, direct or consequential, for the Information or the recipient's reliance upon the Information. The recipient of the Information should take such steps as the recipient may deem necessary to verify the Information prior to placing any reliance upon the Information. The Information may change and any property described in the Information may be withdrawn from the market at any time without notice or obligation to the recipient from CBRE. CBRE and the CBRE logo are the service marks of CBRE Limited and/or its affiliated or related companies in other countries. All other marks displayed on this document are the property of their respective owners. All Rights Reserved.

www.cbre.ca

