



OFFICE BUILDING FOR LEASE

HARBOUR BREEZE PROFESSIONAL CENTER

1500 - 1540 BREEZEPORT WAY, SUFFOLK, VA 23435



HARBOUR BREEZE PROFESSIONAL CENTER

1500 - 1540 BREEZEPORT WAY, SUFFOLK, VA 23435

PROPERTY OVERVIEW



OFFERING SUMMARY

Available SF:	1,288 SF
Lease Rate:	\$18.00 SF/yr (NNN)
Building Size:	50,506 SF

AVAILABLE SPACES

Building 3/Suite 400	1,288 SF
----------------------	----------

PROPERTY HIGHLIGHTS

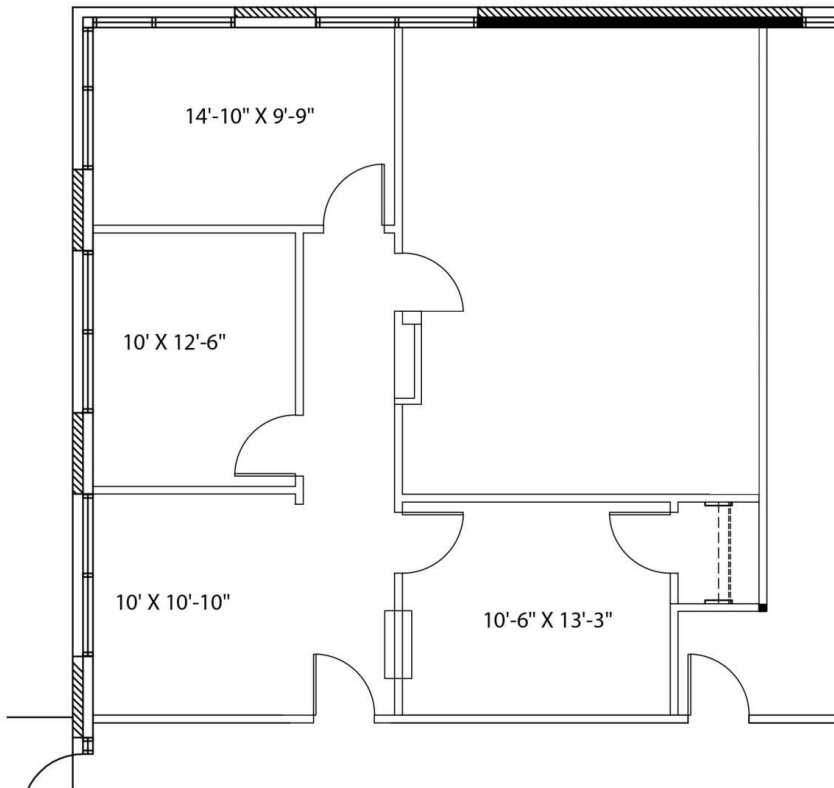
- 4 Class-A single story buildings constructed of brick veneer and glass totaling 62,000 SF
- 4 parking spaces per 1000 RSF

DEMOGRAPHICS	1 MILE	3 MILES	5 MILES
Total Households	2,902	19,464	36,773
Total Population	6,886	50,514	95,913
Average HH Income	\$127,937	\$119,382	\$122,391
Daytime Population	17,704	83,624	118,913

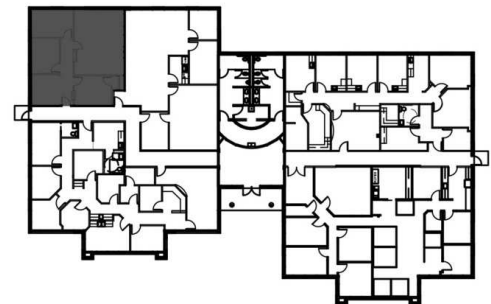
HARBOUR BREEZE PROFESSIONAL CENTER

1500 - 1540 BREEZEPORT WAY, SUFFOLK, VA 23435

BUILDING 3 | SUITE 400 | 1,288 SF



SUITE 400
1,288 SF

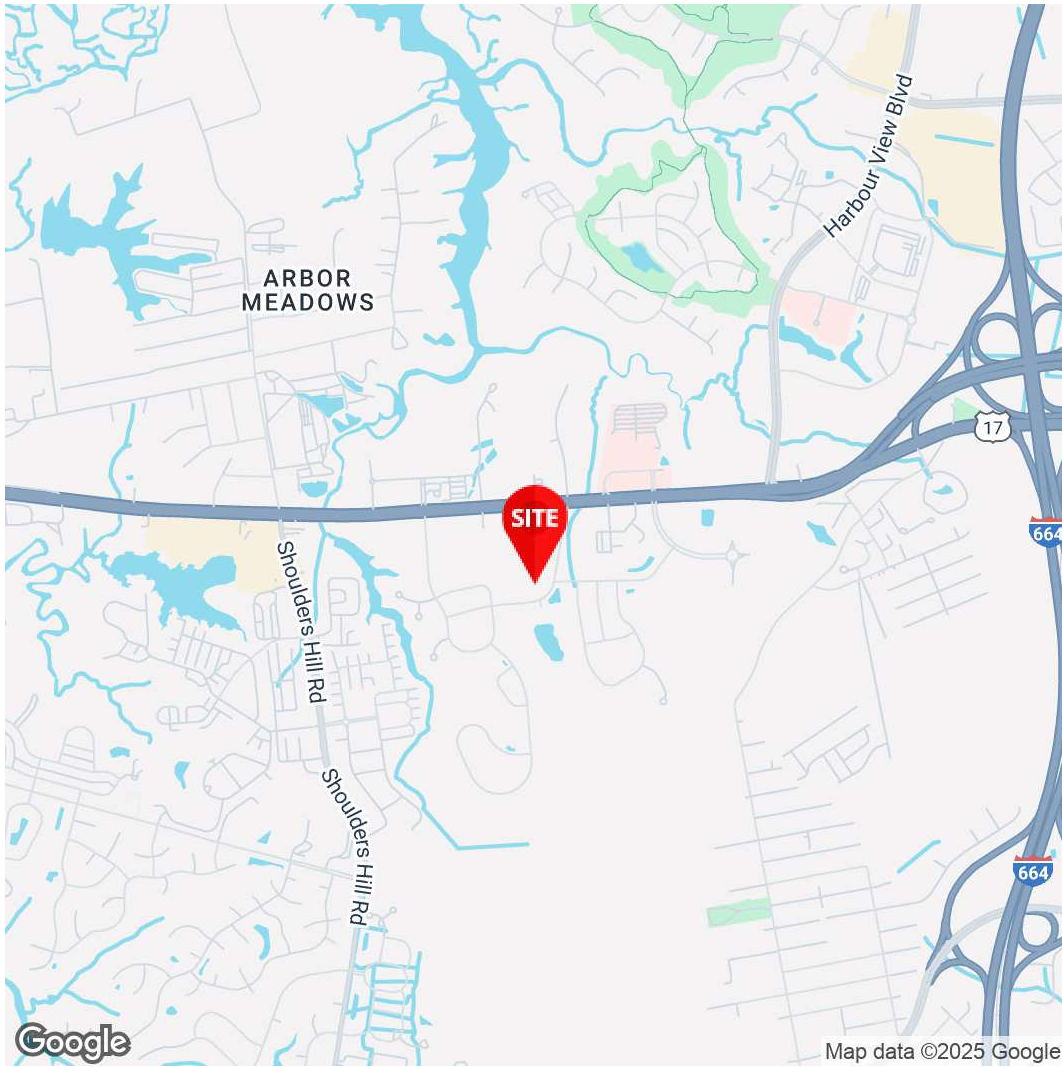


HARBOUR BREEZE PROFESSIONAL CENTER

1500 - 1540 BREEZEPORT WAY, SUFFOLK, VA 23435

SITE PLAN





Krista Costa
Executive Vice President
757.333.4356
Kcosta@Divaris.Com



The information contained herein should be considered confidential and remains the sole property of Divaris Real Estate, Inc. at all times. Although every effort has been made to ensure accuracy, no liability will be accepted for any errors or omissions. Disclosure of any information contained herein is prohibited except with the express written permission of Divaris Real Estate, Inc.