



FOR LEASE

PROFESSIONAL OFFICE | MEDICAL SPACES

THE COURTYARD

27349 JEFFERSON AVE
TEMECULA, CA 92590

KYLE FRIED, CCIM, MBA

951.553.0012

kyle@seawaypropertiesCRE.com

Lic # 02200647

EMILY LEVANDUSKI

951.639.4230

emily@seawaypropertiesCRE.com

Lic # 02207533

CRAIG W. WAY

951.237.7866

seawayproperties@aol.com

Lic # 01336376

THE COURTYARD

27349 JEFFERSON AVE
TEMECULA, CA 92590

THE COURTYARD is a ±36,474 rentable square foot professional and medical office property located in the City of Temecula. The property features attractive architecture, high-quality interior improvements, efficient layouts with no core or load factor, elevator service, and a landscaped courtyard garden. Suites are fully improved, move-in ready, and available for professional office, medical, or dental users.

THE COURTYARD benefits from its location near Jefferson Avenue and Winchester Road, with immediate access to Interstate 15 (0.25 miles) and The Promenade regional shopping center (0.35 miles). Surrounded by major retailers, restaurants, and stable housing growth, Temecula remains a strong professional and medical hub.

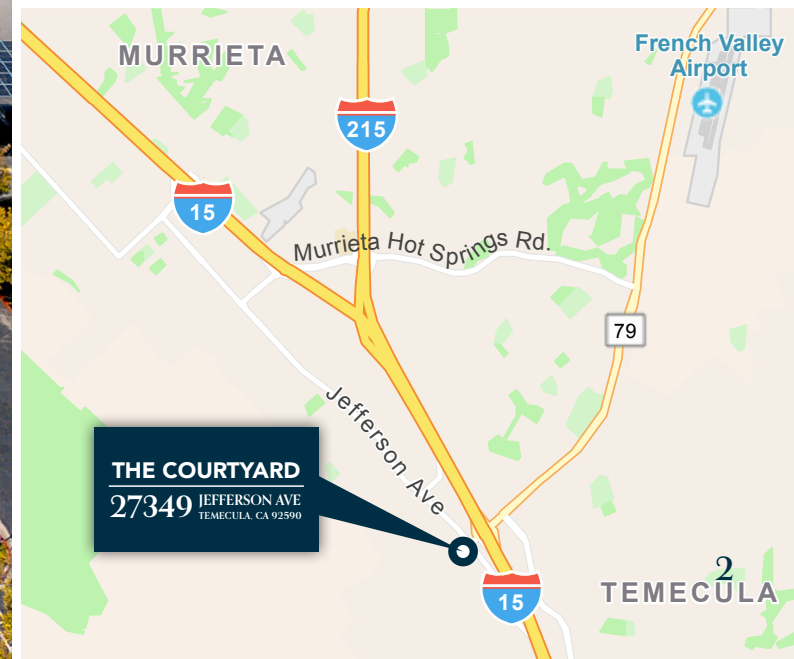
Historically, the property has maintained high occupancy and steady lease performance, driven by its suite flexibility, accessibility, and desirable location.



PROPERTY INFO

Address	27349 Jefferson Ave Temecula, CA 92590
Lot Size	2.41 Acres
Parking Ratio	4/1,000
Year Built	1989
Zoning	CC

- 1,624 SF - 1,721 SF Professional/Medical Offices Available
- Prime Location
- Outstanding Demographics
- Multi Discipline Office / Medical Tenant Mix

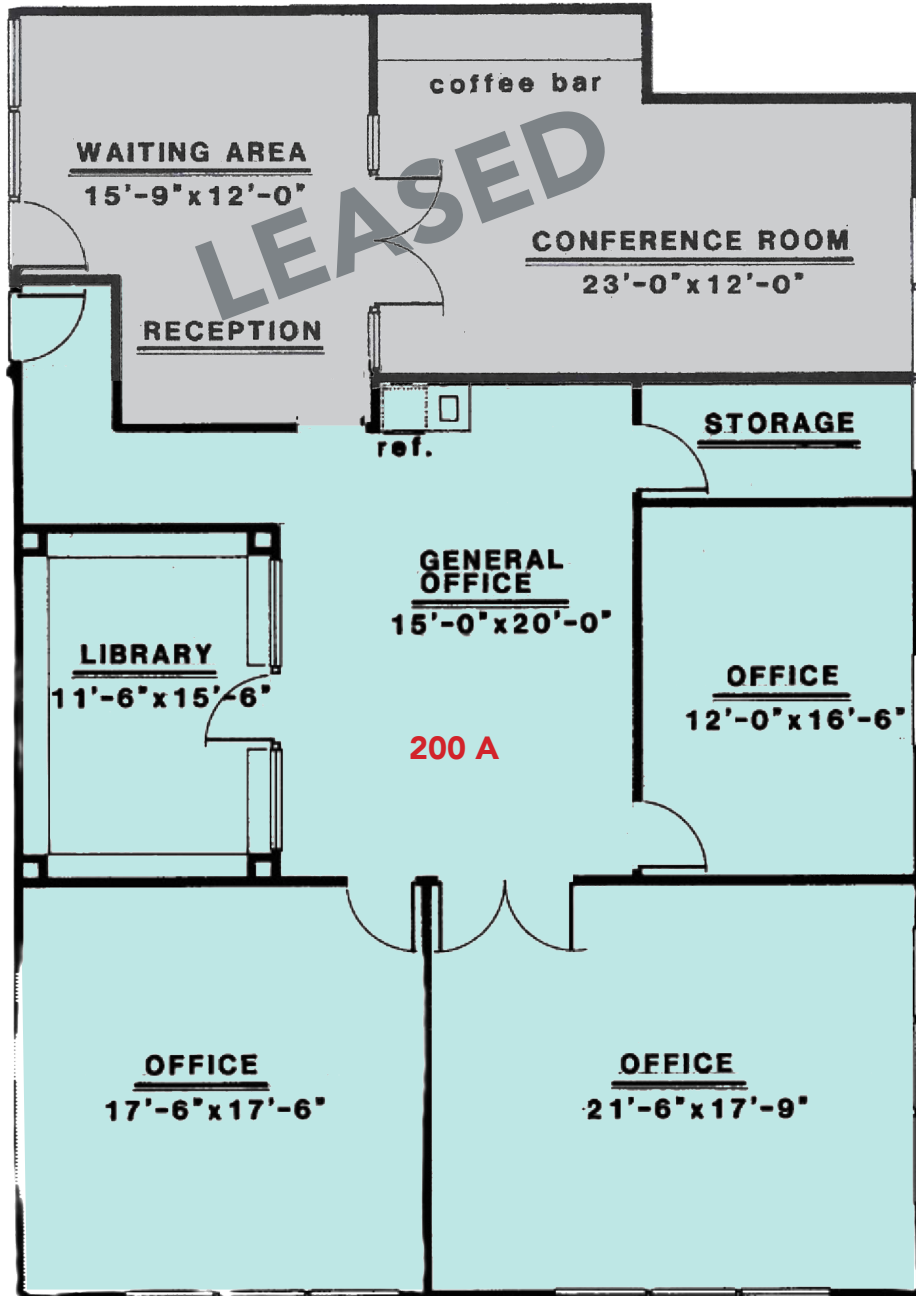


THE COURTYARD

27349 JEFFERSON AVE
TEMECULA, CA 92590

PROPERTY PHOTOS

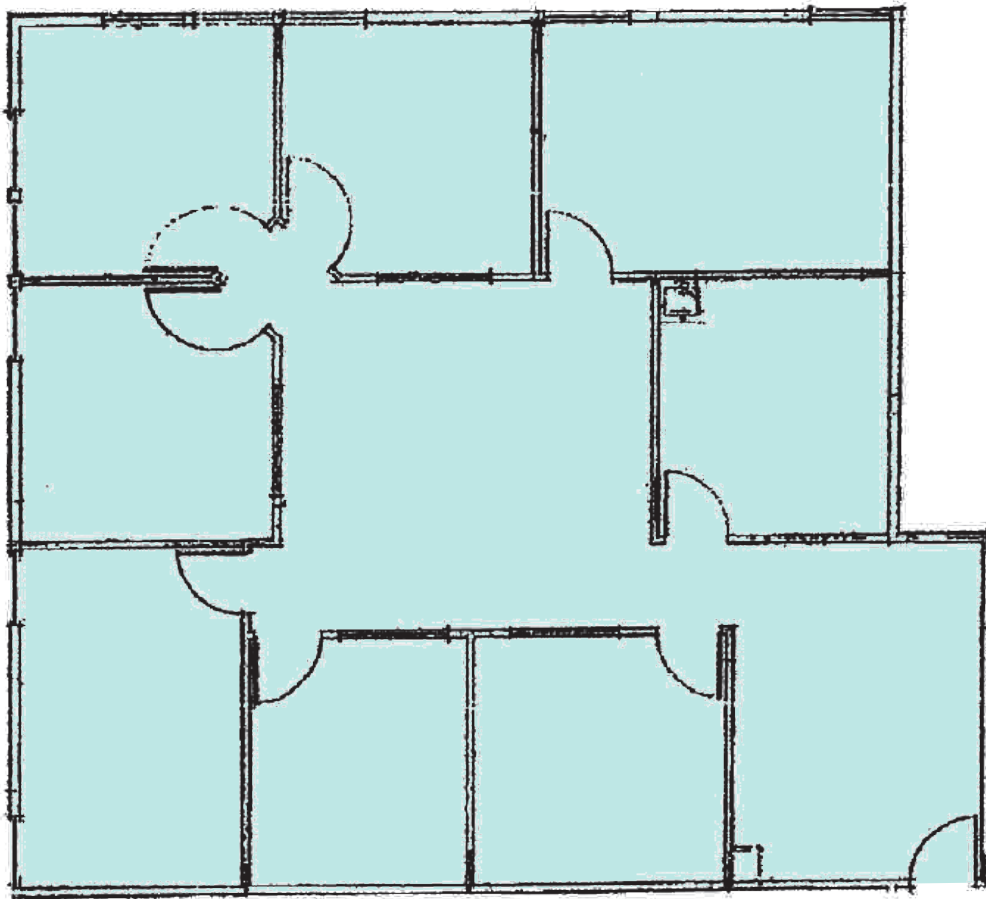




2ND FLOOR AVAILABILITY

SUITE	SIZE	MONTHLY RENT	DESCRIPTION
200 A	1,721 SF	\$1.65 PSF	Contiguous with private offices, kitchen, bullpen

213



2ND FLOOR AVAILABILITY

SUITE	SIZE	MONTHLY RENT	DESCRIPTION
213	1,624 SF	\$1.70 PSF	General office and administration

THE COURTYARD

27349 JEFFERSON AVE
TEMECULA, CA 92590

LOCATION MAP



TRADER JOE'S
WinCo
FOODS

BUSHFIRE
KITCHENS

PROMENADE
PROPERTIES

macy's
COSTCO
WHOLESALE

DICK'S
SPORTING GOODS
REGAL & ASSOCIATED
ROUNDTOWN

Apple
BENIHANA
JCPenney

REGAL
ENTERTAINMENT
GROUP

HOBBY LOBBY
FOOD 4 LESS

at home
TJ-maxx



181,008 CPD

Jack
in the box

STAYBRIDGE
SUITES

WINCHESTER RD (30,207 CPD)

JEFFERSON AVE (30,734 CPD)

THE COURTYARD
27349 JEFFERSON AVE
TEMECULA, CA 92590

TEMECULA

Population	112,502
Average Household Income	\$138,962 (1 Mile Radius)
Average Household Income	\$140,433 (5 Mile Radius)
Est. Households	57,506 (5 Mile Radius)
Total Businesses	9,828 (5 Mile Radius)

FOR LEASE

PROFESSIONAL OFFICE | MEDICAL SPACES

THE COURTYARD

27349 JEFFERSON AVE
TEMECULA, CA 92590



KYLE FRIED, CCIM, MBA
951.553.0012
kyle@seawaypropertiesCRE.com
Lic # 02200647

EMILY LEVANDUSKI
951.639.4230
emily@seawaypropertiesCRE.com
Lic # 02207533

CRAIG W. WAY
951.237.7866
seawayproperties@aol.com
Lic # 01336376



Seaway Properties Real Estate, Inc.
www.seawaypropertiesCRE.com

No warranty or representation has been made to the accuracy of the foregoing information. Terms of sale and availability are subject to change or withdrawal without notice. Seaway Properties Real Estate, Inc. 28545 Old Town Front St. Ste 203, Temecula CA 92590