

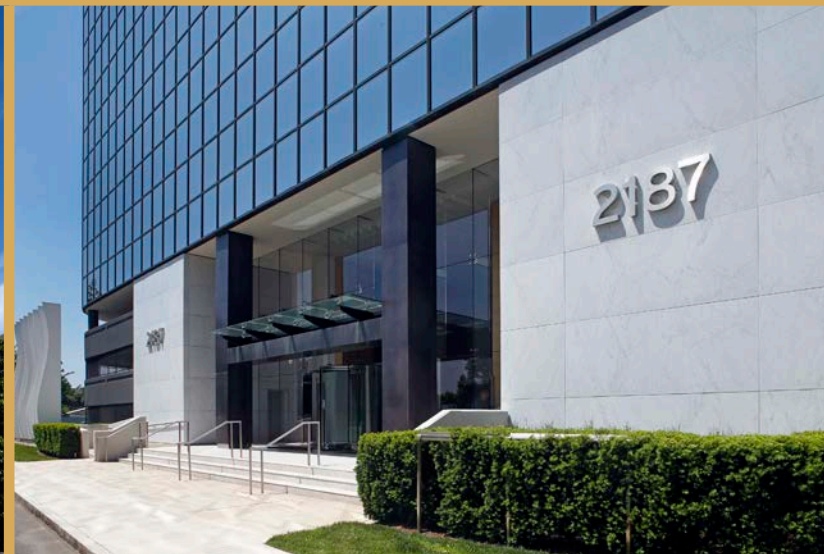


W E L C O M E T O H A R B O R P O I N T

# 2187

ATLANTIC / STREET

STAMFORD, CONN.



**NEWMARK**

# HARBOR POINT LIVE. WORK. PLAY.



**2+**

Miles of waterfront boardwalk

**4**

Marinas

**15+**

Restaurants

**20+**

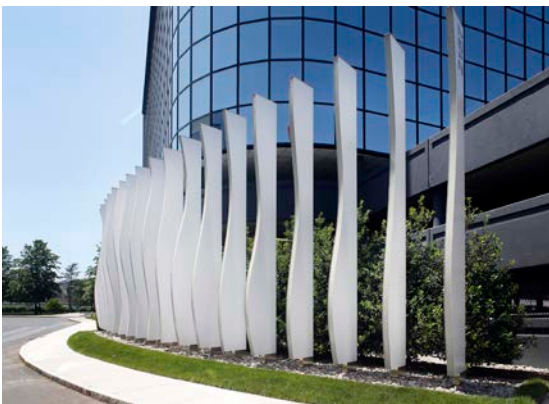
Acres of actively programmed parks

**4K+**

Apartments



2187



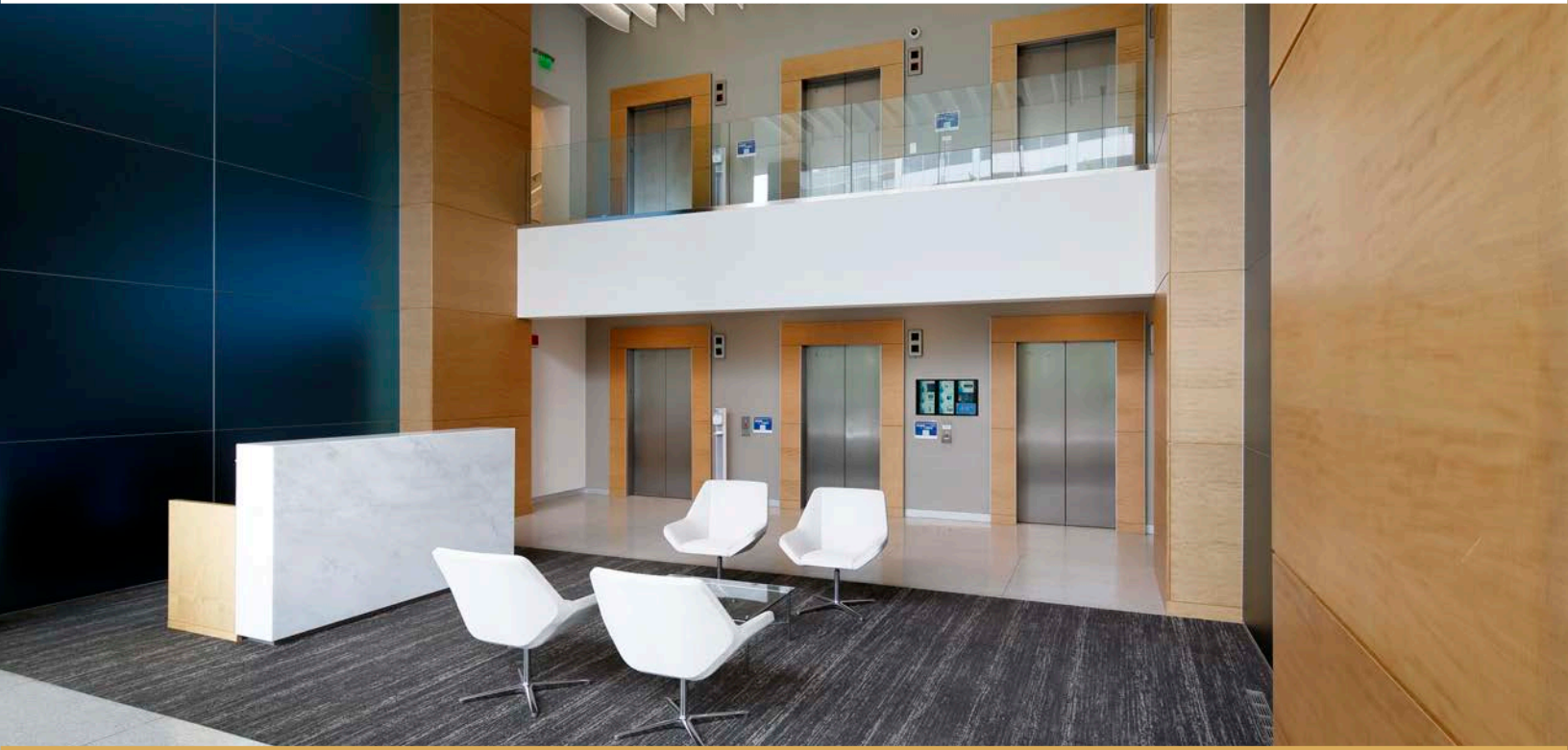
## PROPERTY HIGHLIGHTS

- Located in the heart of Harbor Point
- Surrounded by retail & restaurants
- 5 minute walk to train
- 53 minute ride to New York City
- Spectacular water views
- Shuttle rides to the train station
- Fully equipped fitness center

## AVAILABLE SPACES

Floor	Size	Condition	Delivery
Partial 4th	7,599 SF	High-end 2 <sup>nd</sup> generation buildout	Immediate
Partial 5th	3,092 SF	2022 pre-build	Feb. 2026
Partial 5th	3,260 SF	High-end 2 <sup>nd</sup> generation buildout	Feb. 2026

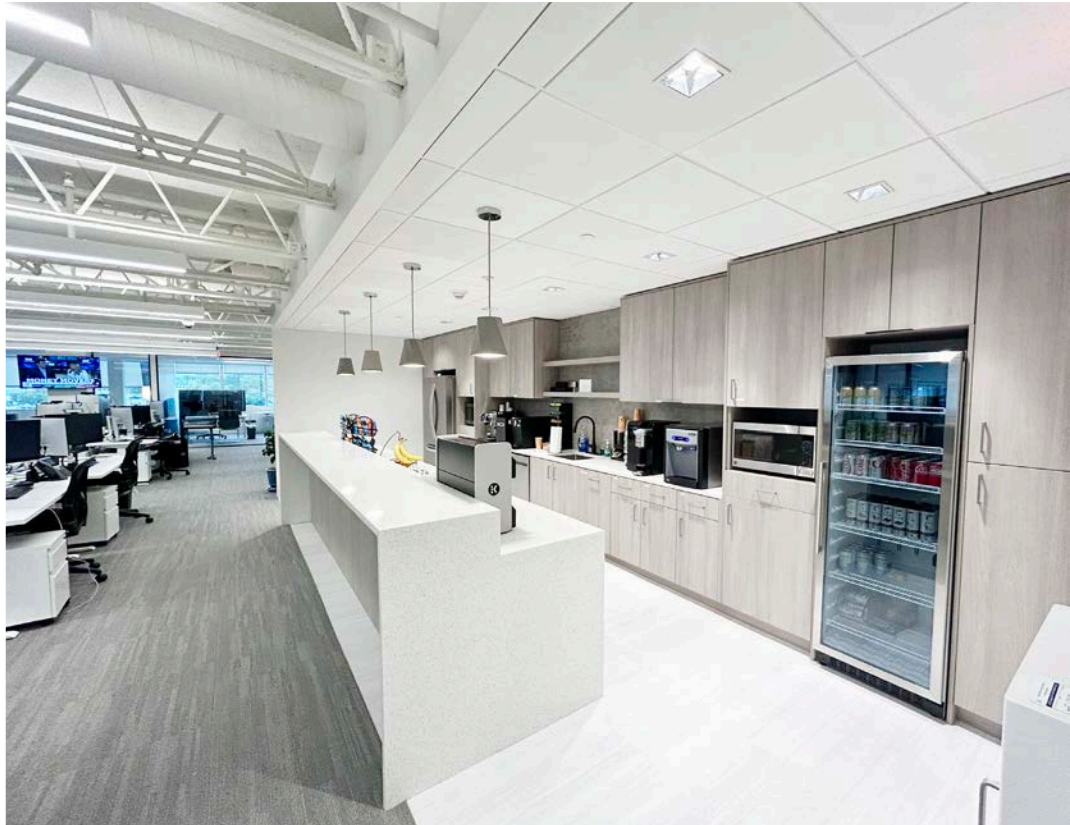
# BRAND NEW MODERN LOBBY



# PRE-BUILD FINISHES



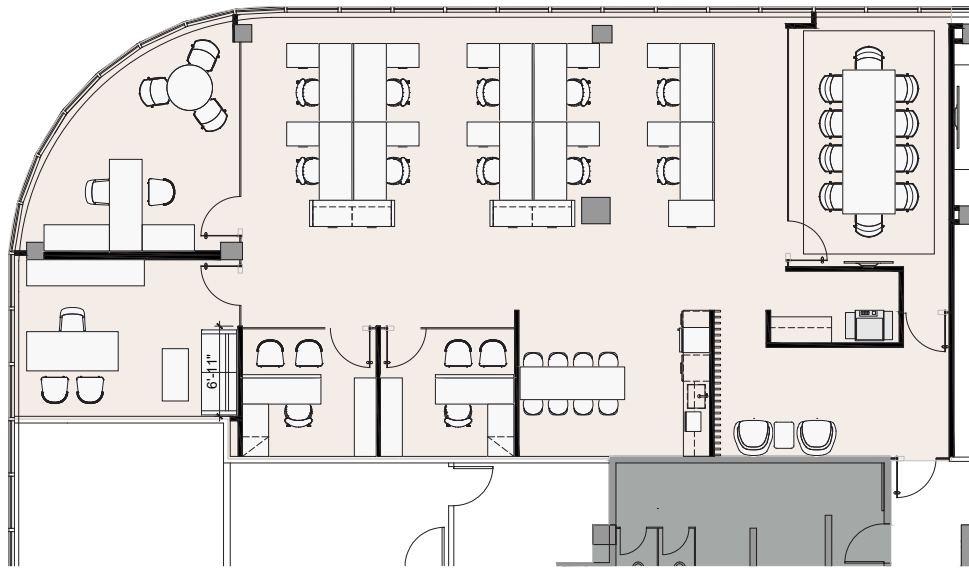
# PRE-BUILD FINISHES





## PARTIAL 5<sup>TH</sup> FLOOR: 3,092 SF

2022 PRE-BUILD / FEBRUARY DELIVERY



## PARTIAL 5<sup>TH</sup> FLOOR: 3,260 SF

HIGH-END 2<sup>ND</sup> GENERATION BUILDOUT

