

COMING 2026: 14,626 SF AT 19 BRIGHAM STREET

BRIGHAM CROSSING

MARLBOROUGH, MA

AVAILABLE 7/1/2026

- 16' ceiling heights
- 3 Private tailboard loading/drive-in docks
- Close proximity to I-495, I-90/Mass Pike & Route 9
- Opportunity to expand/contract within park



Lincoln

53 State Street, 8th Floor
Boston, MA 02109

www.lpc.com

James Tambone
978.578.6111
jtambone@lpc.com

Tim Latham
857.212.6314
tlatham@lpc.com

Chris Devaux
617.951.4124
cdevaux@lpc.com

Will Greer
617.951.4119
wgreer@lpc.com



BUILDING DETAILS

BUILDING SIZE 62,760 SF

CEILING HEIGHT 16'

PARKING 104 spaces

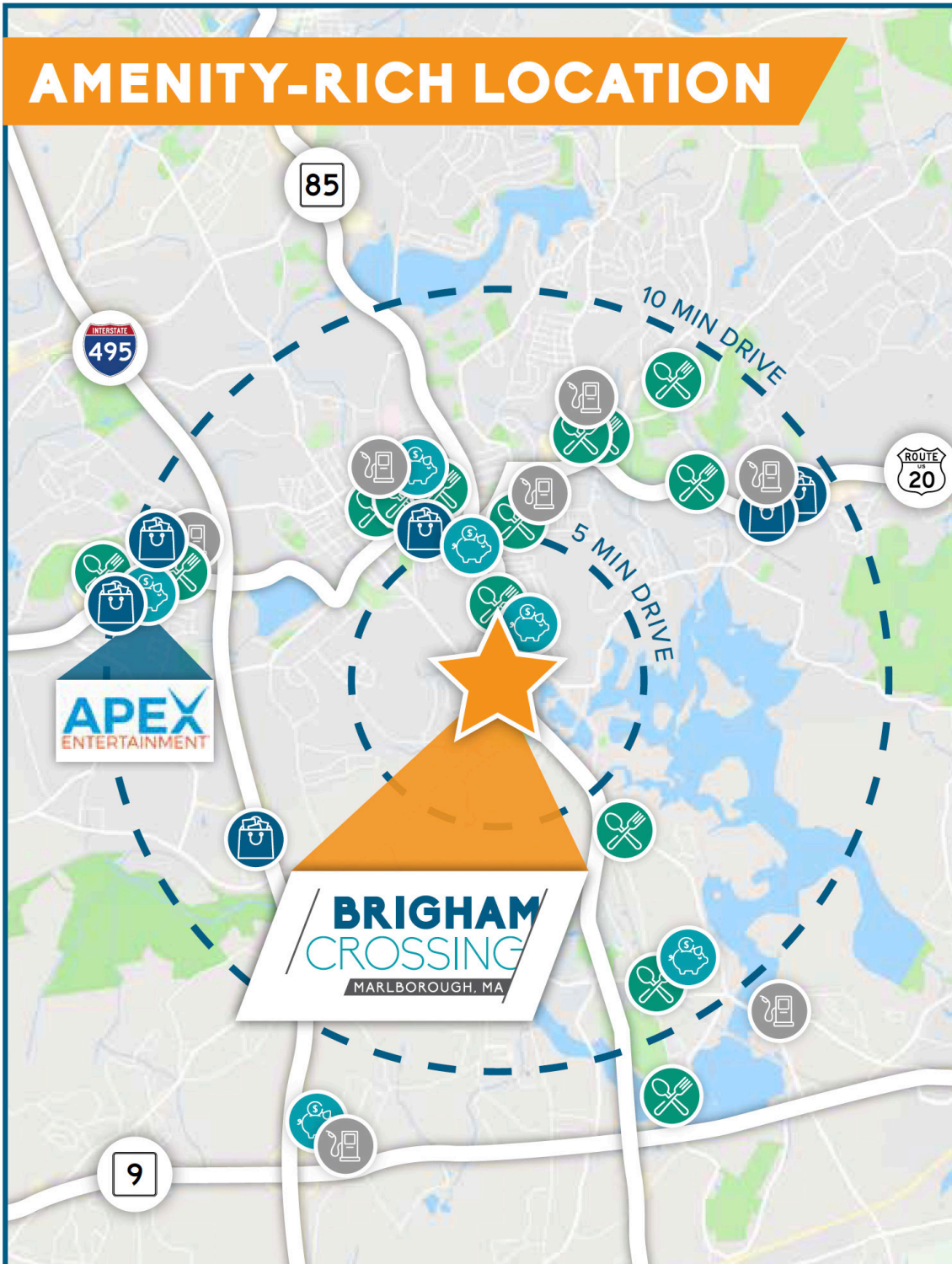
LOADING 12 tailboard docks (8' x 10')
(all units have private tailboard docks)

ELECTRICAL 2000 amps/208 volts, 3 phase,
4-wire feed

HVAC Gas FHA heat; electric rooftop AC
for front office areas

WATER/SEWER City of Marlborough

AMENITY-RICH LOCATION



Walgreens



CVS
pharmacy



TARGET



Ninety 99 Nine
RESTAURANT & PUB



I-495

2 miles

Mass Pike/I-90

4 miles

Route 128/I-95

17 miles

Route 9

2 miles

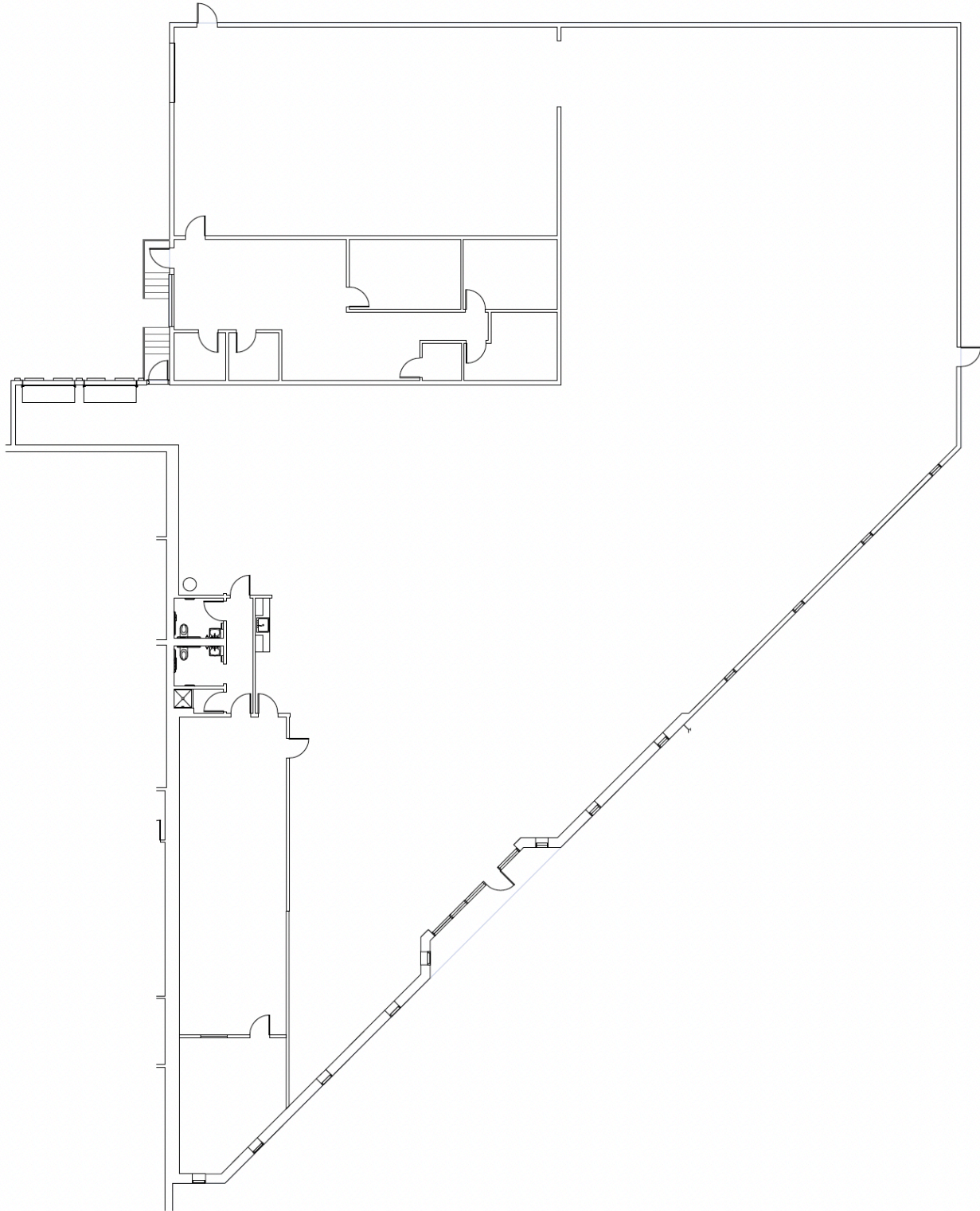
Worcester

18 miles

Boston

25 miles

14,626 SF AVAILABLE 7/1/2026



Lincoln

53 State Street, 8th Floor
Boston, MA 02109

www.lpc.com

James Tambone
978.578.6111
jtambone@lpc.com

Tim Latham
857.212.6314
tlatham@lpc.com

Chris Devaux
617.951.4124
cdevaux@lpc.com

Will Greer
617.951.4119
wgreer@lpc.com