

COMMERCIAL SPACE

**2901 M STREET
GEORGETOWN
Washington, DC**



FOR LEASE

Office/Retail space on M Street

AVAILABILITY | **EARLY FALL 2025**

SPACE | **2ND FLOOR – 3,870 SF
LOWER LEVEL – 3,456 SF**

LOCATION

- Highly visible sought-after M Street location at the East End of Georgetown at the intersection of M Street, 29th Street and Pennsylvania Avenue
- Across from the Four Seasons Hotel and the upcoming 2900 M retail block redevelopment; a block from the newly proposed José Andrés hotel+restaurants

SPACE

- Available for the first time since Building construction, spectacular 2nd floor office suite in the heart of Georgetown.
- One-of-a-kind single tenant 2nd floor space, with windows on 3 sides, at a busy Georgetown intersection of Pennsylvania Avenue, 29th and M Streets
- Dedicated 29th Street entrance
- Spectacular views down Pennsylvania Avenue and M Street (see Old Post Office Tower from the corner office)
- Surface parking of up to 5 spaces available in a gated parking lot adjacent to the Building
- Lower Level space available for lease for BOH needs

CONTACT

Alex Green
202.607.7736
agreen@jstcommercial.com

Anastasia Kharchenko
703.587.6290
ak@jstcommercial.com



COMMERCIAL SPACE

2901 M STREET
GEORGETOWN
Washington, DC

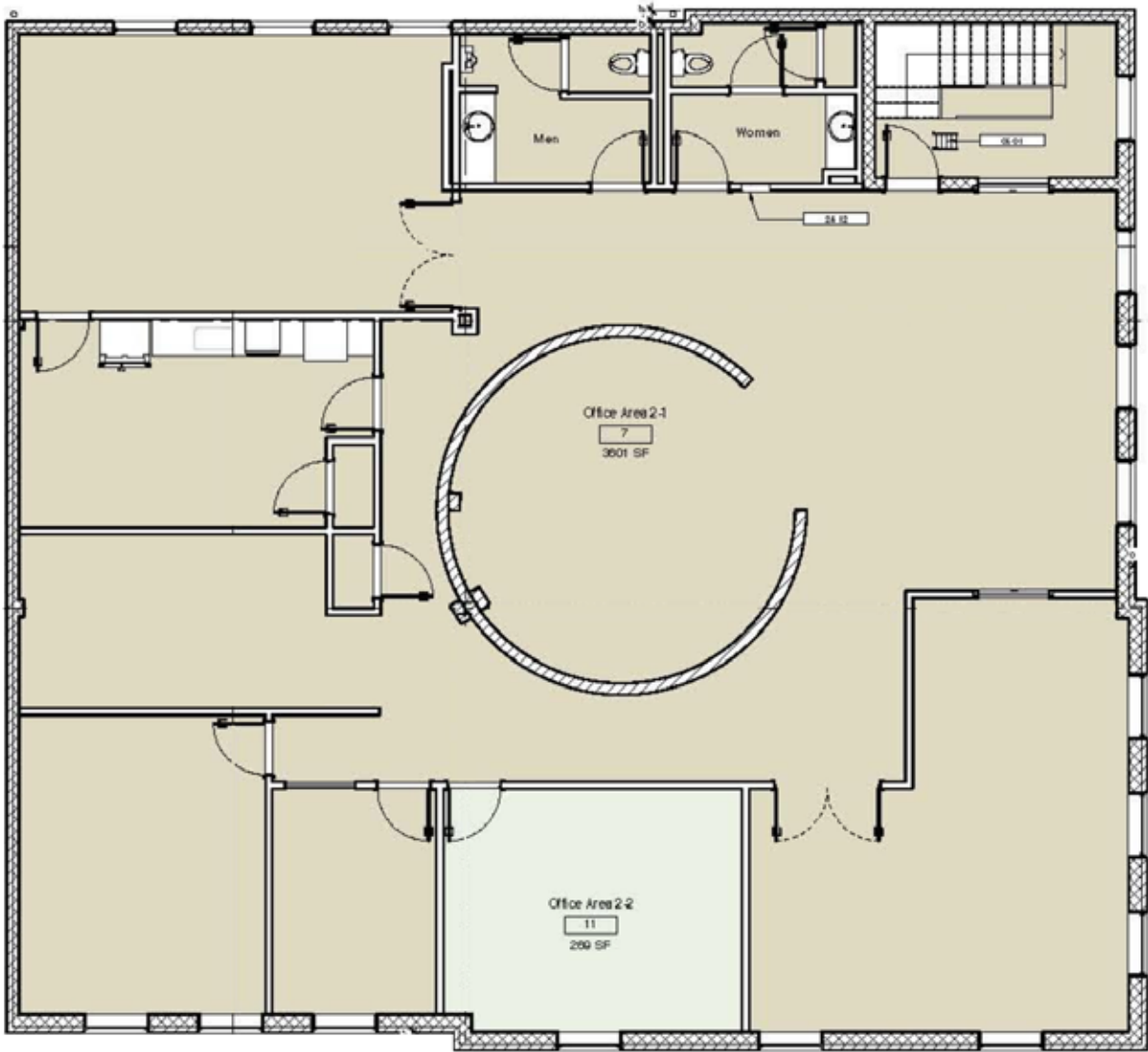
EXTERIOR PHOTOS



COMMERCIAL SPACE

2901 M STREET
GEORGETOWN
Washington, DC

SECOND FLOOR



The information above was furnished to us by sources we believe to be reliable but no warranty or representation is made to its accuracy. It is your responsibility to independently confirm its accuracy and completeness as this offering is subject to correction or errors and omissions, change of pricing, prior to sale, lease or withdrawal from the market, without notice.



CONTACT

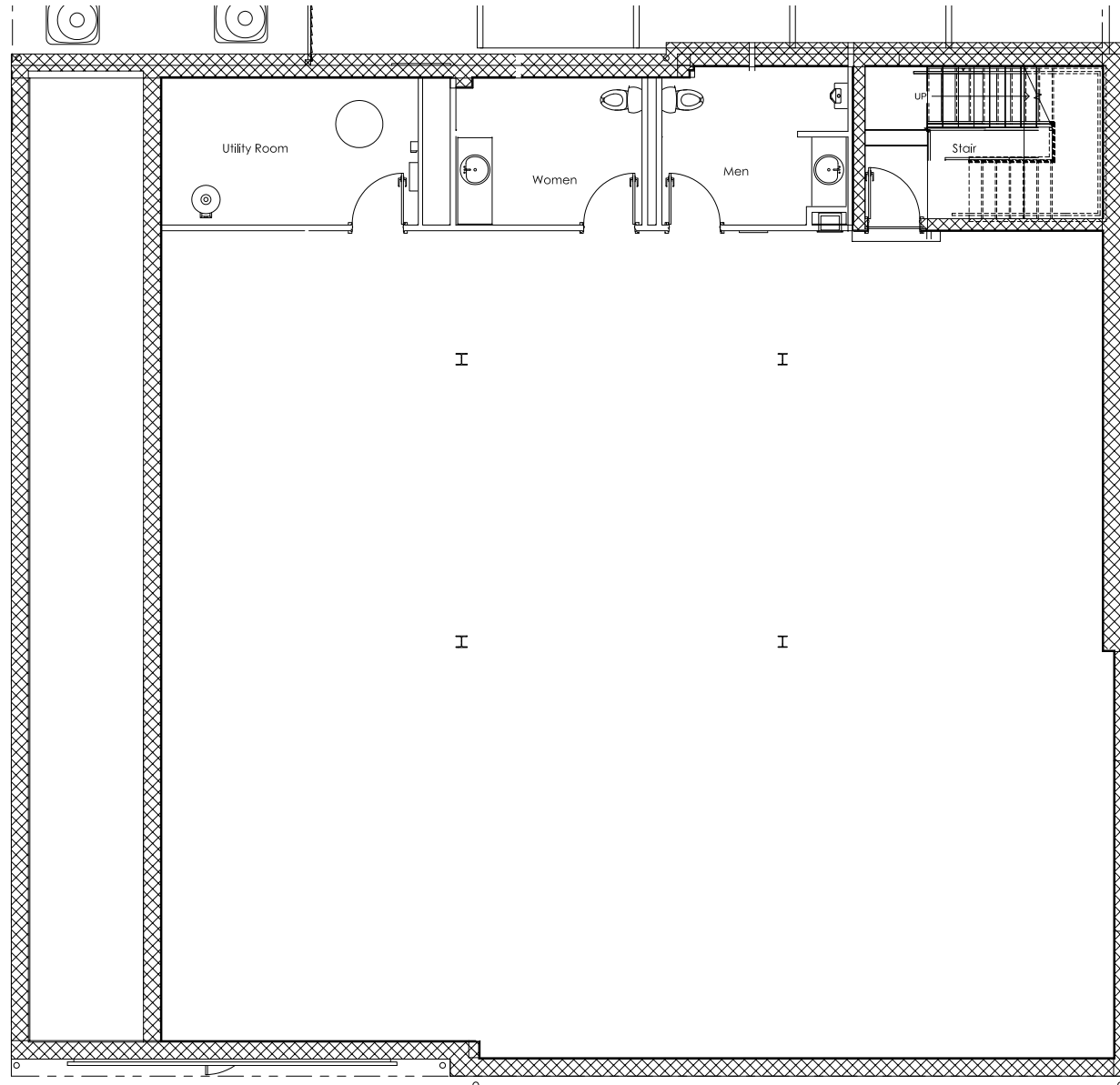
Alex Green
202.607.7736
agreen@jstcommercial.com

Anastasia Kharchenko
703.587.6290
ak@jstcommercial.com

COMMERCIAL SPACE

2901 M STREET
GEORGETOWN
Washington, DC

LOWER LEVEL



The information above was furnished to us by sources we believe to be reliable but no warranty or representation is made to its accuracy. It is your responsibility to independently confirm its accuracy and completeness as this offering is subject to correction or errors and omissions, change of pricing, prior to sale, lease or withdrawal from the market, without notice.



CONTACT

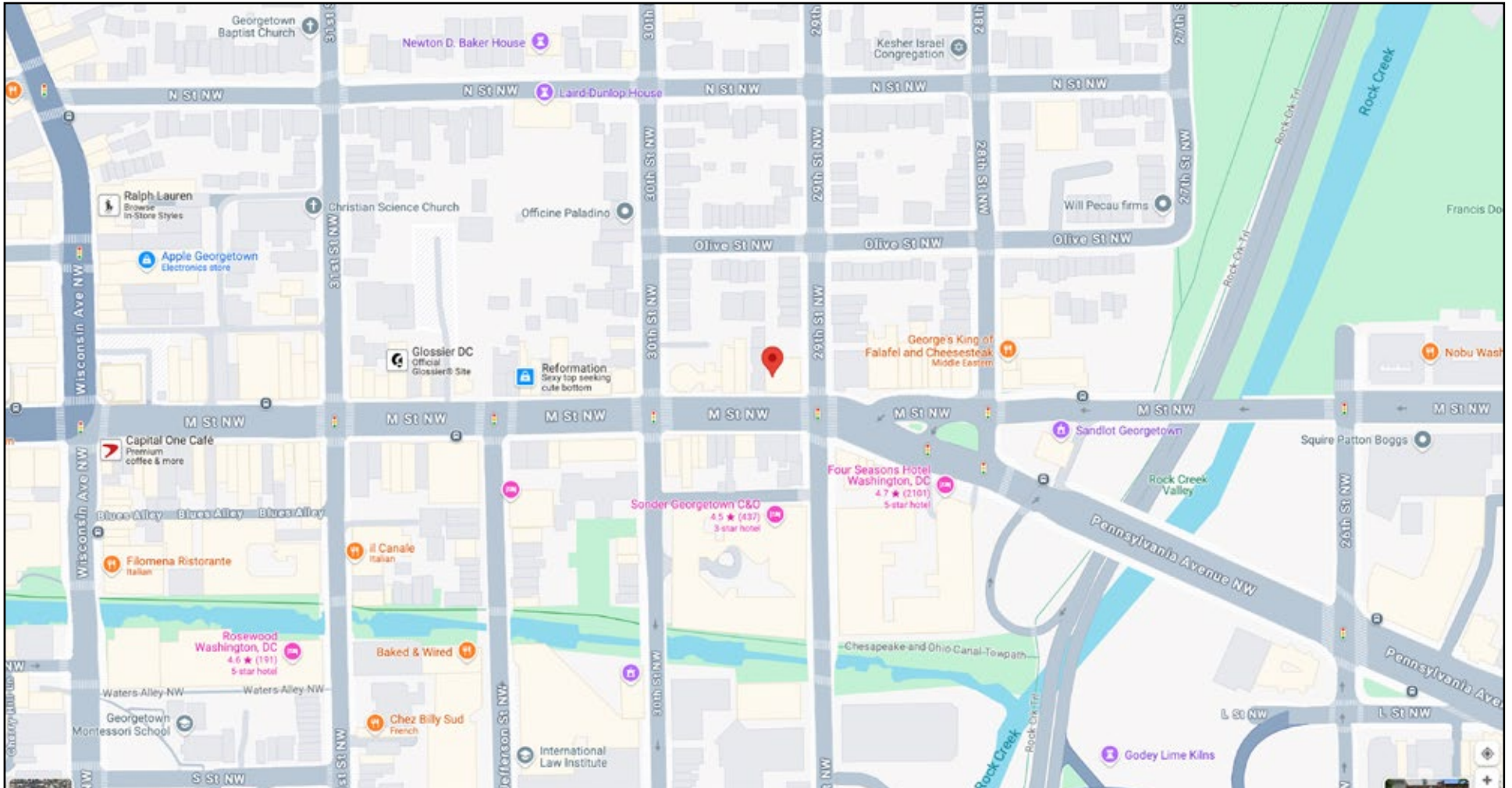
Alex Green
202.607.7736
agreen@jstcommercial.com

Anastasia Kharchenko
703.587.6290
ak@jstcommercial.com

COMMERCIAL SPACE

**2901 M STREET
GEORGETOWN
Washington, DC**

LOCATION MAP



The information above was furnished to us by sources we believe to be reliable but no warranty or representation is made to its accuracy. It is your responsibility to independently confirm its accuracy and completeness as this offering is subject to correction or errors and omissions, change of pricing, prior to sale, lease or withdrawal from the market, without notice.



**J STREET
COMMERCIAL**

CONTACT

Alex Green
202.607.7736
agreen@jstcommercial.com

Anastasia Kharchenko
703.587.6290
ak@jstcommercial.com