

Workplace Co.

**12 APPOLD STREET**

SHOREDITCH, LONDON, EC2A 2AW

---

THEWORKPLACECOMPANY.CO.UK | 020 7993 8075



# 12 APPOLD STREET

Following the refurbishment of the property, the available floors offer bright, open and spacious accommodation with high-quality finishes throughout. The available spaces on a CAT A basis enable a tenant to create a space of their own within the bright and open spaces.

The reception has recently been refurbished creating a welcoming client facing space. In addition, the end of trip facilities have been refurbished to provide tenants with showers, bike racks and lockers.




**New lease** to be agreed direct from the Landlord.

Floor	SQFT	Rent	Rates	Service	£ Monthly	£ Annually
5th	3,510	£57.50	£22	£17.50	£28,373	£340,470
4th	3,606	£57.50	£22	£17.50	£29,149	£349,782
3rd	3,636	£49.50	£22	£17.50	£26,967	£323,604

## Key Features

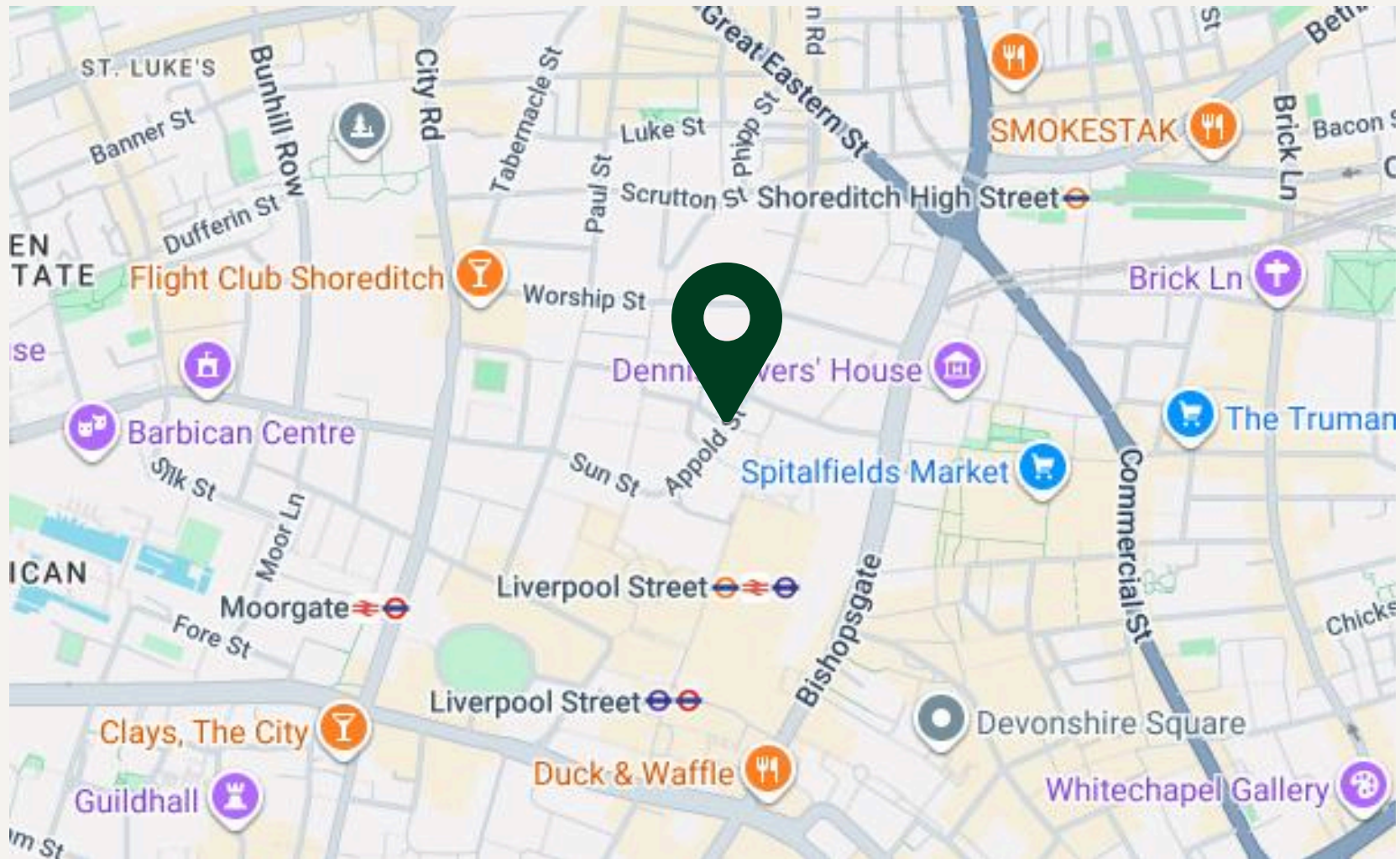
- Newly Refurbished Manned Reception
- Passenger lift
- Air Conditioning
- Column Free
- Meeting Rooms
- Demised WC's & Showers
- Bike Racks & Lockers
- Fibre
- Kitchenette
- Remodelled End of Trip Facilities

## Nearby Stations

-  Liverpool Street (3 mins walk)
-  Moorgate (9 mins walk)
-  Shoreditch High Street (11 mins walk)

# 12 APPOLD STREET

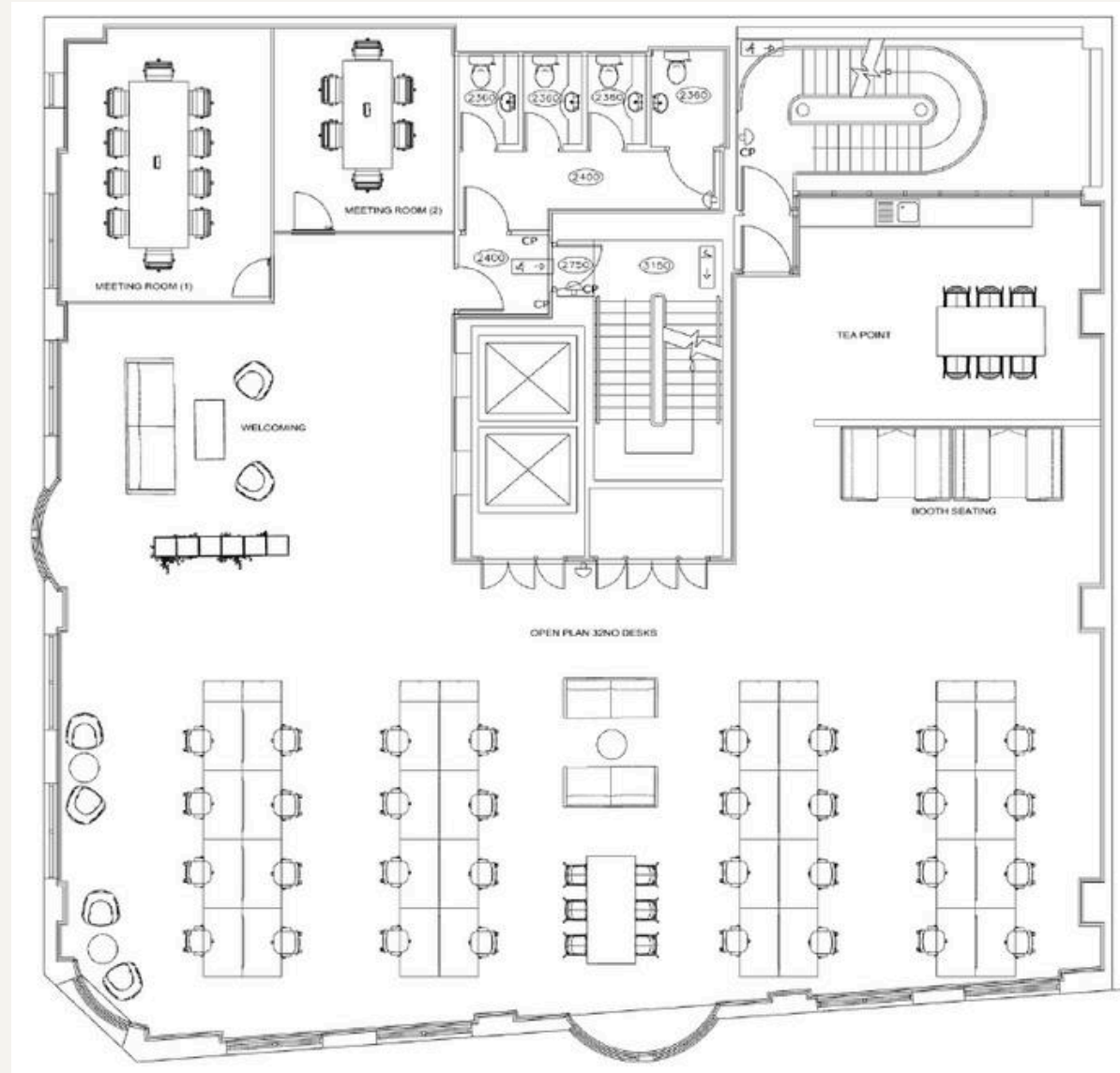
The Appold's position means Liverpool Street, Old Street, Moorgate and Shoreditch High Street stations are all within easy reach in under a ten minute walk. Surrounding the property includes many amenities such as cafe's, bars and restaurants.



# GALLERY



# FLOOR PLAN



Workplace Co.

# VIEWINGS

**Lisa Moran MRICS** - Partner

**DD:** 02079938075 / **M:** 07808073959

**E:** lm@theworkplacecompany.co.uk

**Joshua Levi** - Surveyor

**DD:** 02039047724 / **M:** 07807231203

**E:** jl@theworkplacecompany.co.uk

---

THEWORKPLACECOMPANY.CO.UK | 020 7993 8075

Misrepresentation Act 1967: These particulars are believed to be correct but their accuracy is not guaranteed and they do not form part of any contract. Unless otherwise stated, all prices and rents are quoted exclusive of VAT