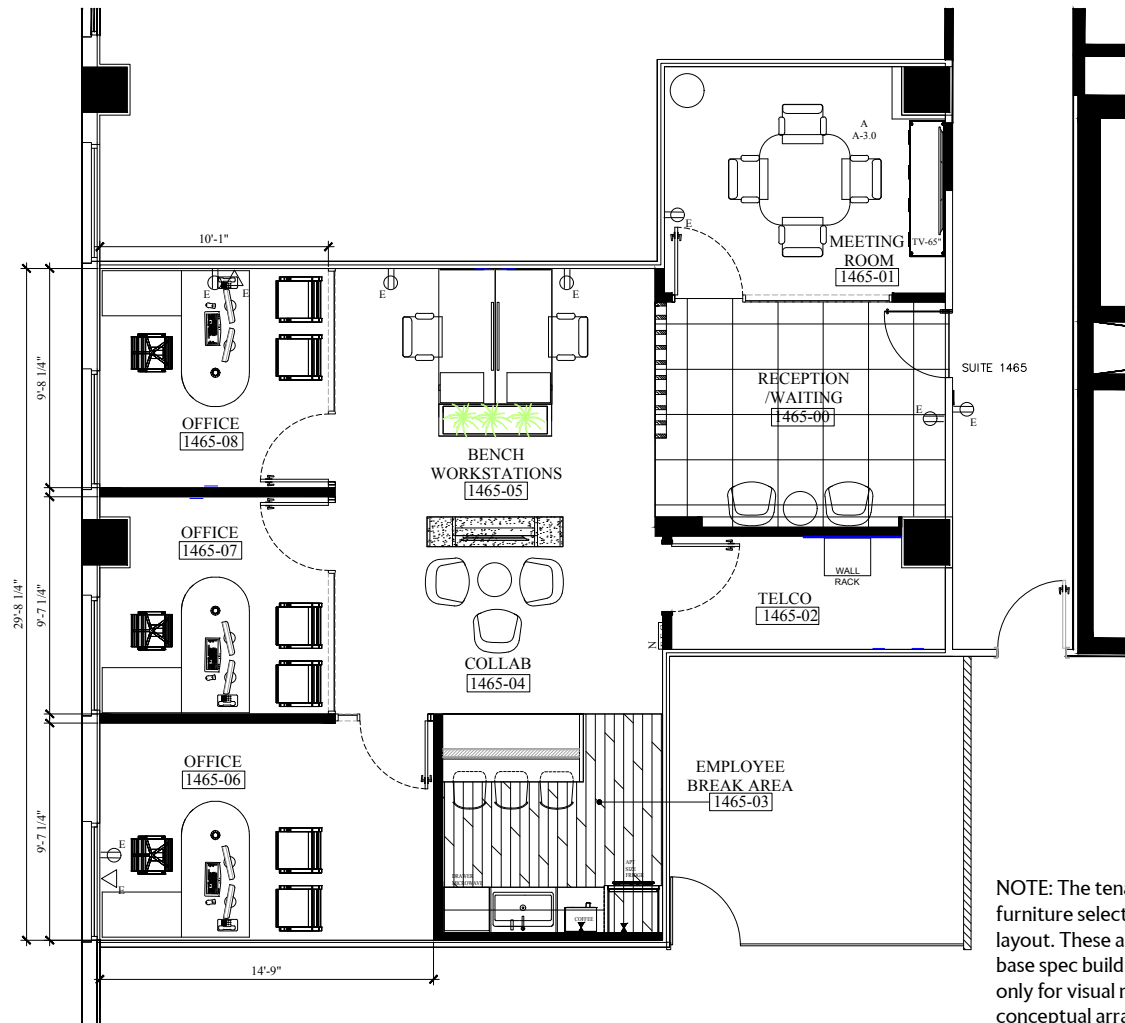


1,425 RSF

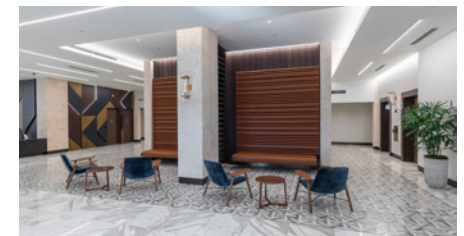
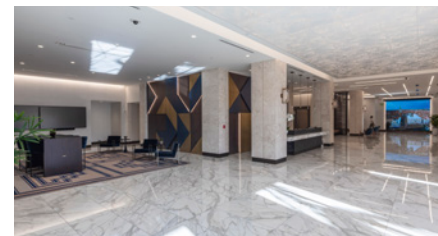
Suite 1465



NOTE: The tenant will determine furniture selection, quantity, and final layout. These are not included in the base spec build and are shown here only for visual reference to depict a conceptual arrangement.

Stephen Rutchik
Vice Chairman
+1 305 519 6688
stephen.rutchik@colliers.com

Kevin Gonzalez
Senior Vice President
+1 305 896 3900
kevin.gonzalez@colliers.com



This document/email has been prepared by Colliers for advertising and general information only. Colliers makes no guarantees, representations or warranties of any kind, expressed or implied, regarding the information including, but not limited to, warranties of content, accuracy and reliability. Any interested party should undertake their own inquiries as to the accuracy of the information. Colliers excludes unequivocally all inferred or implied terms, conditions and warranties arising out of this document and excludes all liability for loss and damages arising there from. This publication is the copyrighted property of Colliers and /or its licensor(s). © 2026. All rights reserved. This communication is not intended to cause or induce breach of an existing listing agreement. Colliers International Florida, LLC.