

## Office/Medical Space for Lease

**\$19/SF**  
+ utilities & cleaning



**Burke Professional Center**  
5272 Lyngate Court, Unit 200  
Burke, VA 22015

**957 SF**  
**Available Now**

- C-2 zoning
- First floor unit
- Ideal for office & medical use
- Windowed offices
- Ample, no cost surface parking
- Individual suite signage
- Conveniently located at the corner of Rolling and Braddock Road minutes from I-495

Kelly O'Brien: 703-447.1511

kobrien@landmarkcre.com

Blair White, CCIM: 703-307-9711

blair@landmarkcre.com

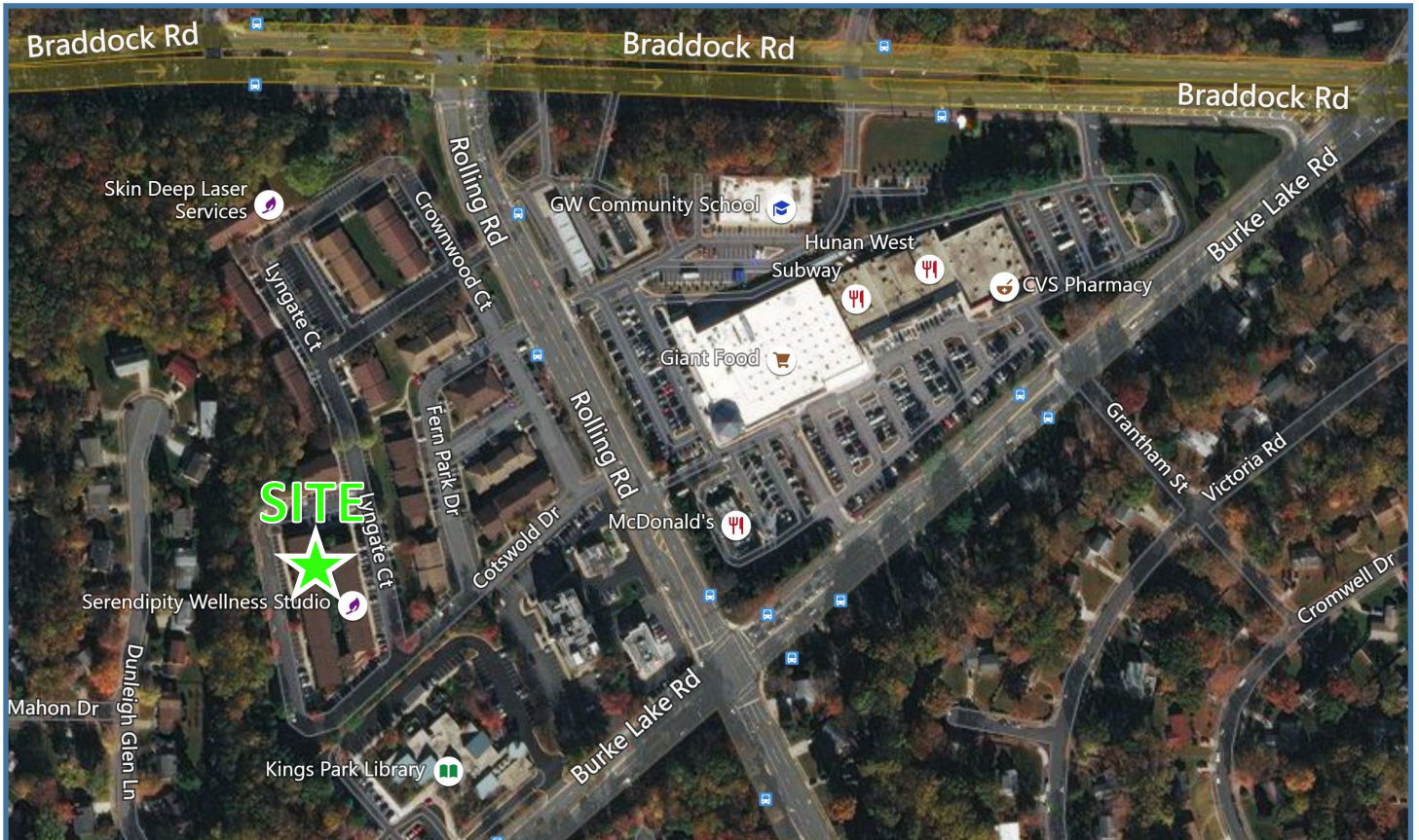
Landmark Commercial Real Estate

LandmarkCRE.com



**LANDMARK**  
COMMERCIAL REAL ESTATE

# Aerials



Kelly O'Brien: 703-447-1511

kobrien@landmarkcre.com

Blair White, CCIM: 703-307-9711

blair@landmarkcre.com

Landmark Commercial Real Estate

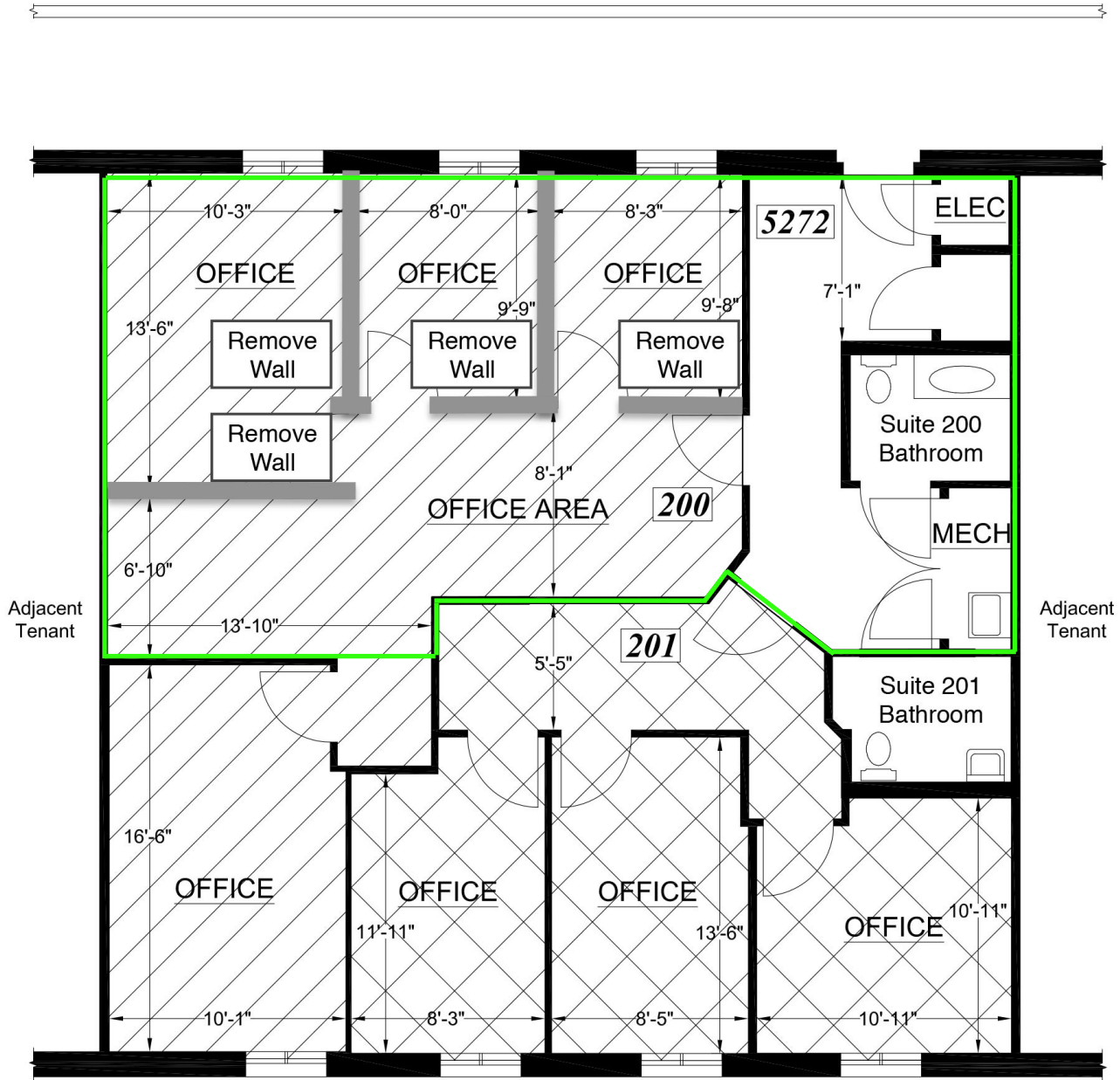
703-437-1440

LandmarkCRE.com



**LANDMARK**  
COMMERCIAL REAL ESTATE

5272 Lyngate, Suite 200



LYNGATE CT

The information above has been obtained from sources believed to be reliable. While we do not doubt its accuracy we have not verified it and make no guarantee, warranty or representation about it. It is your responsibility to independently confirm its accuracy and completeness. Any projections, opinions, assumptions, or estimates used are for example only and do not represent the current or future performance of the property. The value of this transaction to you depends on tax and other factors which should be evaluated by your tax, financial, and legal advisors. You and your advisors should conduct a careful, independent investigation of the property to determine to your satisfaction the suitability of the property for your needs.

Kelly O'Brien: 703-447-1511  
 kobrien@landmarkcre.com  
 Blair White, CCIM: 703-307-9711  
 blair@landmarkcre.com

Landmark Commercial Real Estate  
 LandmarkCRE.com

