

3100 52ND AVENUE

SACRAMENTO, CALIFORNIA 95823

CUSHMAN &
WAKEFIELD

LBA Logistics

FOR SALE OR LEASE



VIEW DRONE VIDEO

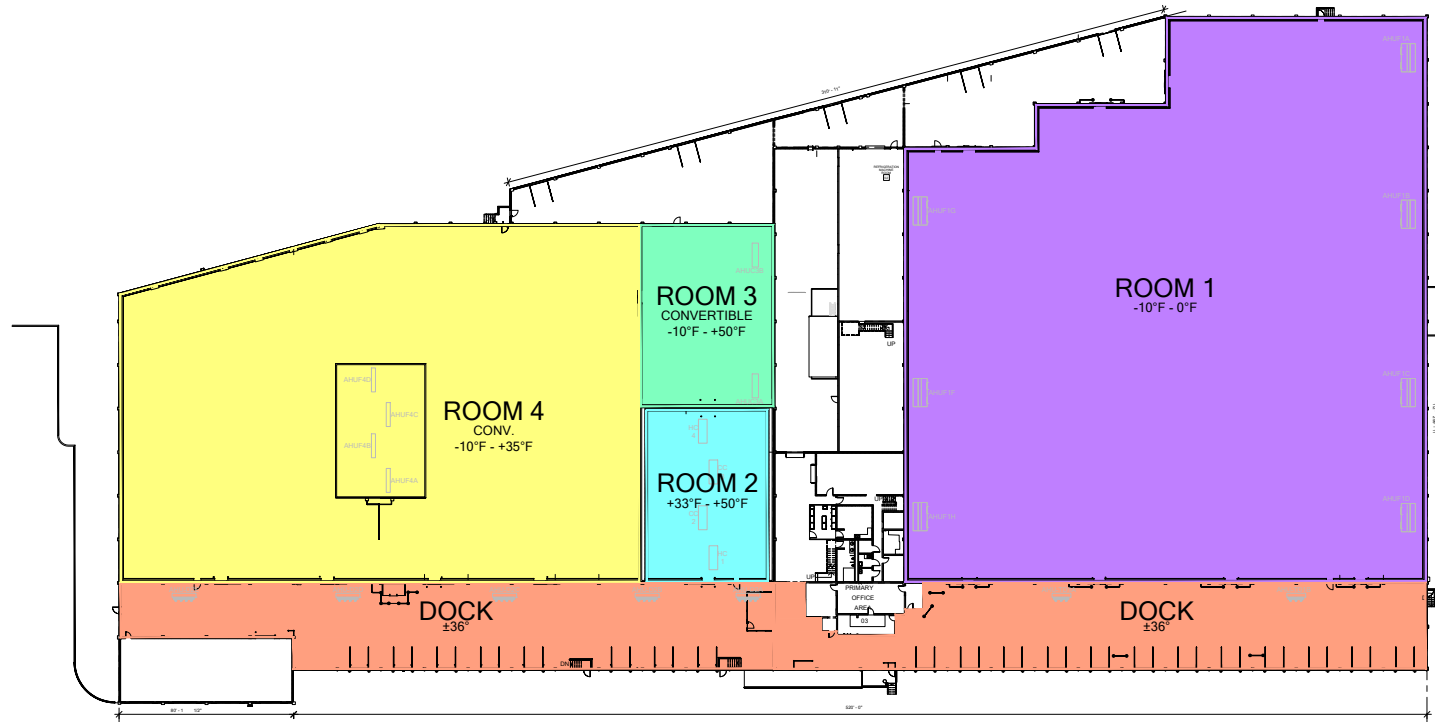
±161,789 SF FREEZER / COOLER FACILITY

PROPERTY SPECS

Building and Site Size:	±161,789 SF on ±8.32 Acres
Freezer Storage Area:	±94,039 SF
Convertible Storage Area:	±5,106 SF
Refrigerated Storage Area:	±4,829 SF
Refrigerated Dock Area:	±22,003 SF
Rail Dock Area (Ambient):	±9,333 SF
Truck Court Depth:	±122'
Dock Doors:	20
Clear Height:	See Floor Plan on Page 4
Significant Infrastructure Upgrades:	See Page 5
Ammonia Refrigeration System with Underfloor System Throughout	
Fully Sprinklered:	See Page 3 for Specifications
Parking: 61 Auto Stalls and 8 Existing Trailer Positions. Trailer Parking Expandable by 26 Positions - See Page 4	



ROOM TEMPERATURES / SQUARE FOOTAGES / SPRINKLER CALCS



-Room 1 (56,333 SF): This room is designated as a freezer. Recommended temperatures are shown at -10F. This room could be operated at -15F (ice cream storage) if desired.

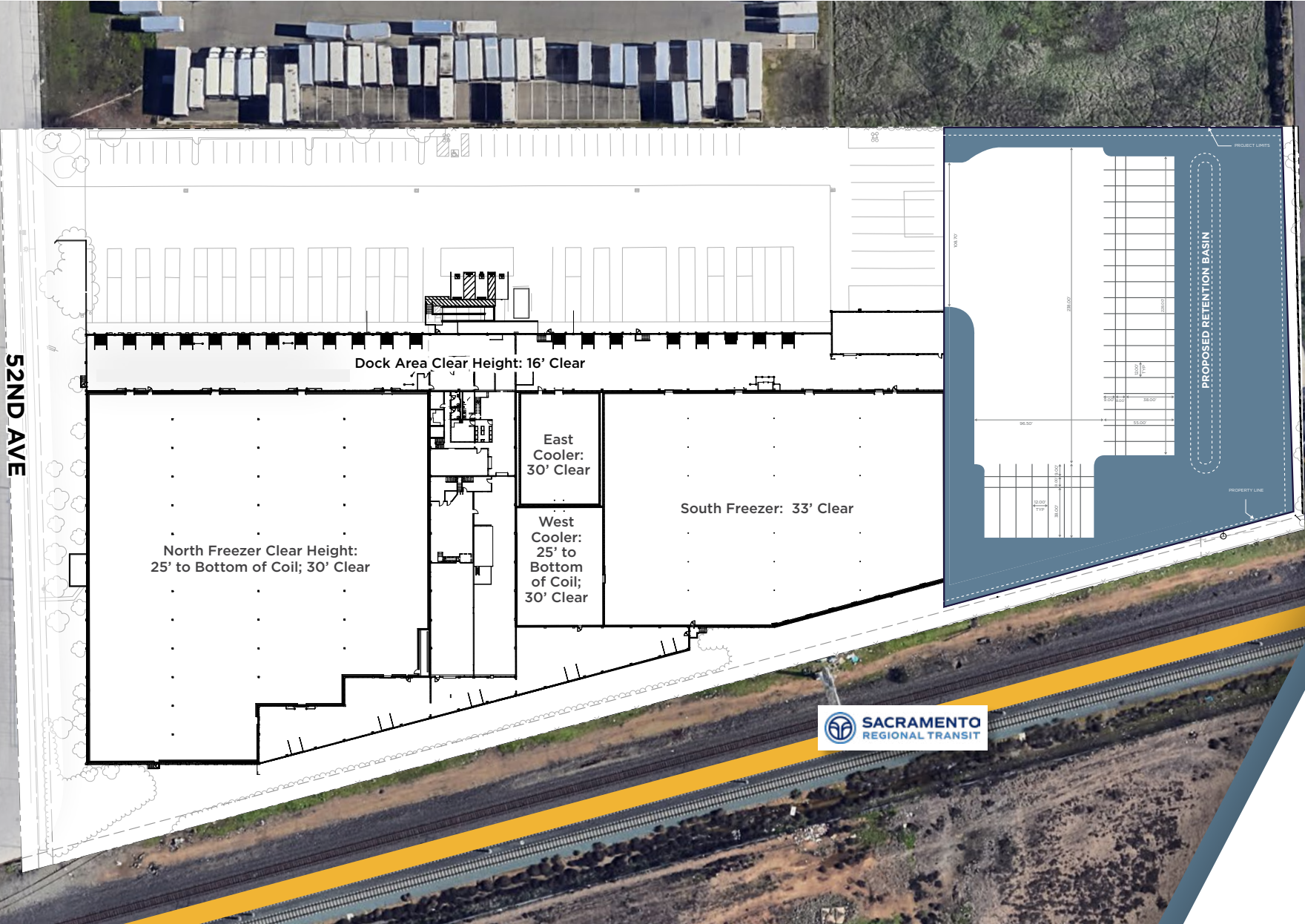
-Room 2 (4,829 SF): The recommended minimum temperature is +33F. This room is not convertible to freezer. Dual Action Dry Branch Sprinkler System.

-Room 3 (5,106 SF): This room is convertible to freezer. The recommended minimum temperature is -10F as this room has the air duct underfloor heating. Dual Action Dry Branch Sprinkler System.

-Room 4 (37,706 SF): This room is designated as a freezer. The recommended minimum temperature is -10F as this room has the air duct underfloor heating. Dual Action Dry Branch Sprinkler System.

-Refrigerated docks (22,003 SF): The recommended temperature is > +36F, as the air units are air defrost.

SITE PLAN | CLEAR HEIGHTS | POTENTIAL TRAILER PARKING



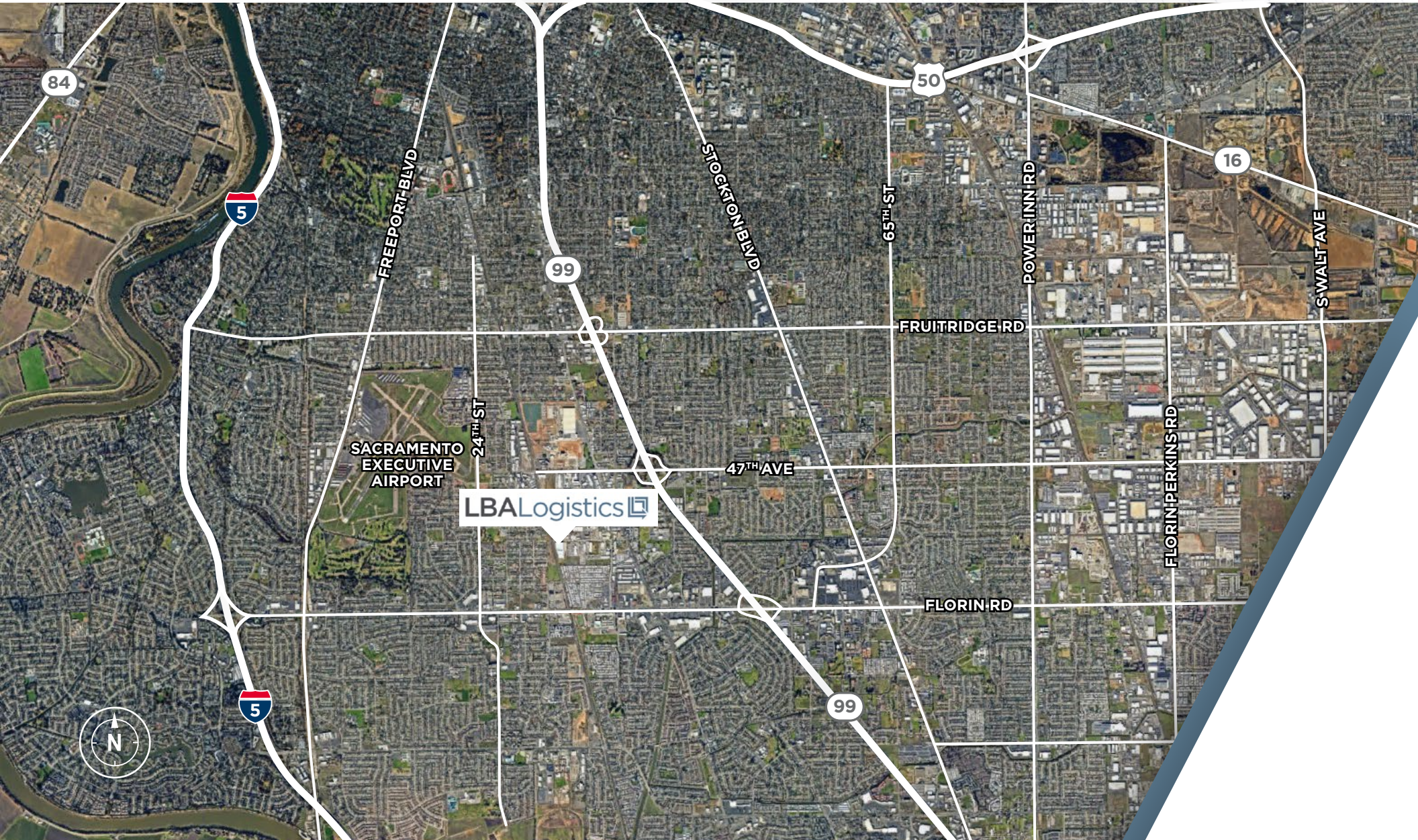
*heights are to the bottom of the beam but should be independently verified

RECENT INFRASTRUCTURE IMPROVEMENTS

1. Evaporative condenser deep cleaning and leak repairs
2. New VFDs for condenser fans
3. PSRV replacement on NH₃ system
4. New NH₃ plant controls to Allen Bradley 5069 Logix platform and micro processor control panels
5. New NH₃ leak detection, utilizing CTI components, new horns, strobes
6. New engine room emergency ventilation system
7. New engine room pipe insulation
8. New NH₃ transfer pumps
9. NH₃ system leak test
10. 17 new MCC motor starters
11. Oil filter change on compressors
12. New water treatment system for all 5 condensers
13. Newly installed booster compressor (with spare back-up)
14. New glycol underfloor heat exchange and slab in freezer 1
15. New heating element for forced draft fan underfloor heating system in freezer 4
16. LED lighting throughout the whole building
17. 3000A main bus duct testing. Documents available. **Subject to tenant verification*
18. Maintenance and testing of main switchboard/main breaker documents available
19. New air compressor for dry sprinkler system
20. New accelerator valves for dry sprinkler system
21. New fire alarm panel
22. New fire detection system for dual action fire sprinklers
23. New seal coated roof with insulation
24. PSM/RMP programs ready for start up
25. New ADA ramp
26. New wrought iron fencing along 52nd Avenue
27. New entrance gate and keypad



LOCAL ACCESS

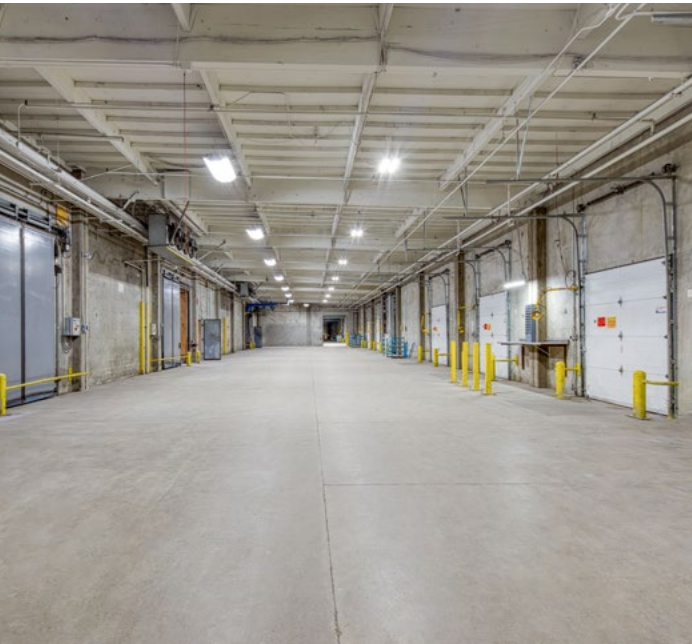
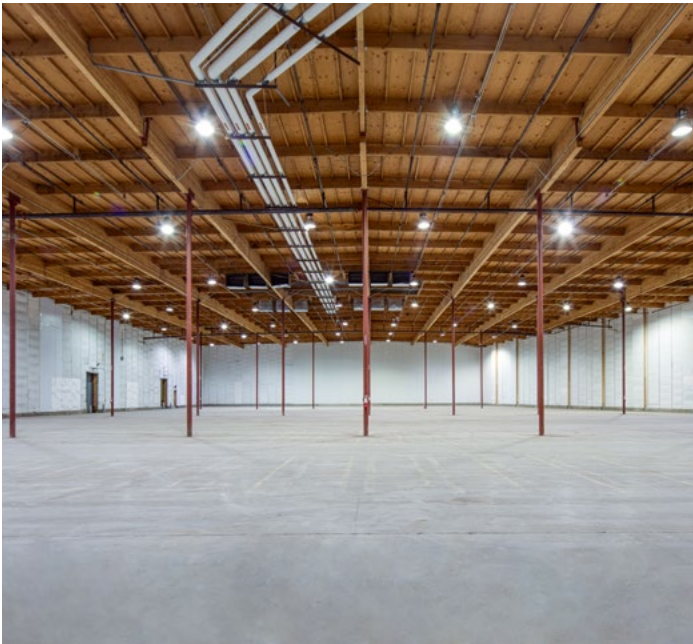


REGIONAL ACCESS

ADDRESS	DRIVE TIME	DISTANCE
Downtown Sacramento	14 min	7.4 miles
Port of Stockton	56 min	47.9 miles
Port of Oakland	90 min	87.9 miles
San Francisco	95 min	93.3 miles
San Jose	60 min	125 miles
Reno	135 min	137 miles



PROPERTY PHOTOS





For more information, please contact:

BRYCE MACDONALD

Executive Director
+1 916 288 4806
bryce.macdonald@cushwake.com

DAVID NICHOLSON

Managing Director
+1 916 288 4422
david.nicholson@cushwake.com

VICTOR DEBOER

Executive Director
+1 510 891 5804
victor.deboer@cushwake.com

TYSON VALLENARI

Executive Managing Director
+1 209 425 3960
tyson.vallenari@cushwake.com

400 Capitol Mall | Suite 1800 | Sacramento, California 95814 | +1 916 288 4800 | cushmanwakefield.com

©2026 Cushman & Wakefield. All rights reserved. The information contained in this communication is strictly confidential. This information has been obtained from sources believed to be reliable but has not been verified. NO WARRANTY OR REPRESENTATION, EXPRESS OR IMPLIED, IS MADE AS TO THE CONDITION OF THE PROPERTY (OR PROPERTIES) REFERENCED HEREIN OR AS TO THE ACCURACY OR COMPLETENESS OF THE INFORMATION CONTAINED HEREIN, AND SAME IS SUBMITTED SUBJECT TO ERRORS, OMISSIONS, CHANGE OF PRICE, RENTAL OR OTHER CONDITIONS, WITHDRAWAL WITHOUT NOTICE, AND TO ANY SPECIAL LISTING CONDITIONS IMPOSED BY THE PROPERTY OWNER(S). ANY PROJECTIONS, OPINIONS OR ESTIMATES ARE SUBJECT TO UNCERTAINTY AND DO NOT SIGNIFY CURRENT OR FUTURE PROPERTY PERFORMANCE.

