

102-110

JOHN STREET
FINANCIAL DISTRICT, NYC

Between Gold & Pearl Streets

RETAIL/QSR FOR LEASE

APPROXIMATE SIZE

Space A: 842 SF
Space B: 1,011 SF
~~Space C: 749 SF~~ Leased

ASKING RENT

Upon Request

POSSESSION

Immediate

TERM

Negotiable

FRONTAGE

25-75 FT

COMMENTS

- Brand-new mixed-use development in the heart of FiDi with state-of-the-art amenities including lobby lounge, fitness center, and bar
- 172-key boutique hotel rooms and 250-resident units above
- Spaces will be delivered in white-box condition with wood flooring
- Venting possible, plumbing in place, restrooms to be installed, and brand-new storefronts
- 400 - 600 AMP's per space
- Flexible layouts and combinations 100% possible

NEIGHBORS

Stout • Carvel • Subway • Orange Theory • Starbucks • Felice • Harry's Italian • Pearl Diner • Coffee Project • Hey Thai • Key Food • Sweat 440 • Martin Busch Jewelers • Thompson Hotels • Duane Reade • Citi Bank

TRANSPORTATION

2 3 R W 4 5 A C J Z

NOAM AZIZ

Senior Director
212.468.5984
naziz@meridiancapital.com

JOSHUA VILINSKY

Associate
212.468.5922
jvilinsky@meridiancapital.com



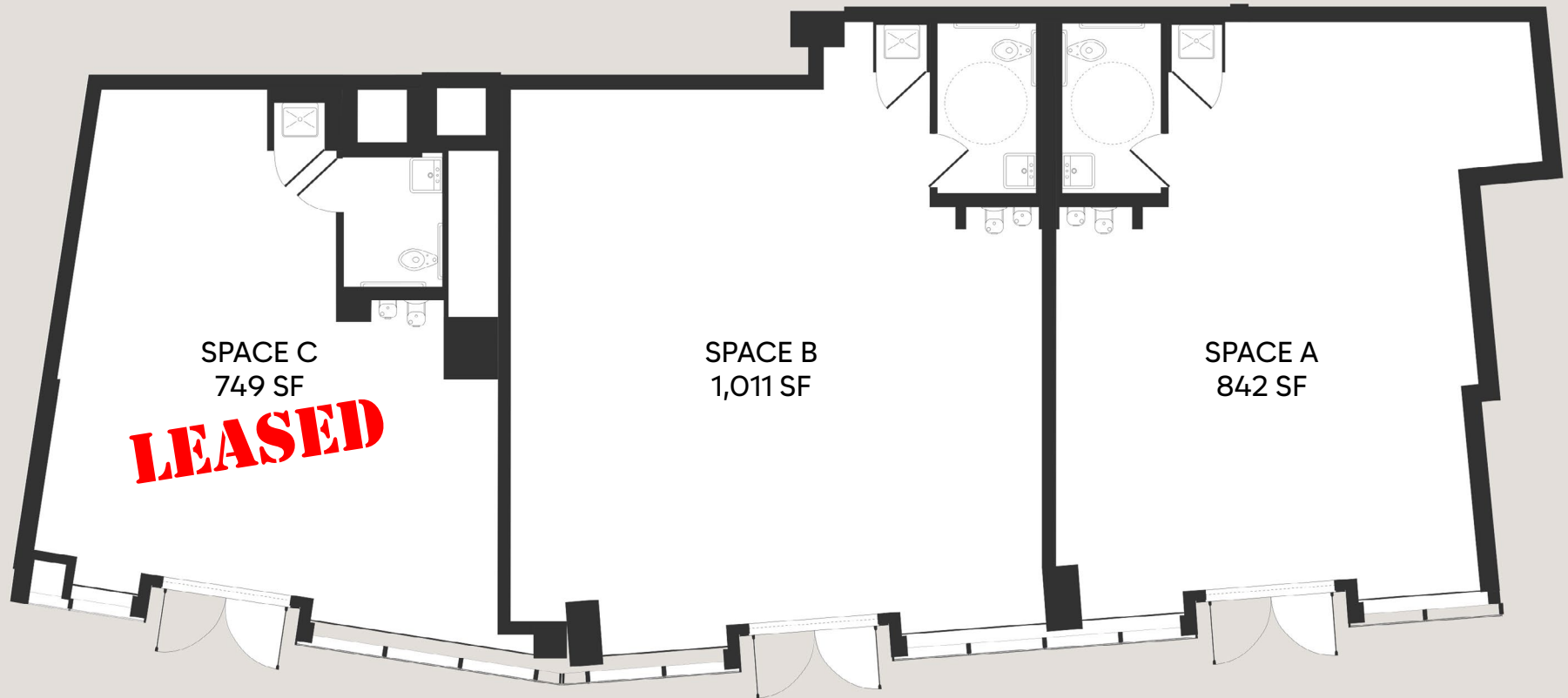
PROPERTY INFORMATION



MERIDIAN
RETAIL LEASING

All information supplied is from sources deemed reliable and is furnished subject to errors, omissions, modifications, removal of the listing from sale or lease, and to any listing conditions, including the rates and manner of payment of commissions for particular offerings imposed by Meridian Capital Group. This information may include estimates and projections prepared by Meridian Capital Group with respect to future events, and these future events may or may not actually occur. Such estimates and projections reflect various assumptions concerning anticipated results. While Meridian Capital Group believes these assumptions are reasonable, there can be no assurance that any of these estimates and projections will be correct. Therefore, actual results may vary materially from these estimates and projections. Any square footage dimensions set forth are approximate.

FLOOR PLAN



SPACE C
749 SF
LEASED

SPACE B
1,011 SF

SPACE A
842 SF

ENTRANCES ON JOHN STREET
CAN BE COMBINED

NOAM AZIZ
Senior Director
212.468.5984
naziz@meridiancapital.com

JOSHUA VILINSKY
Associate
212.468.5922
jvilinsky@meridiancapital.com



MERIDIAN
RETAIL LEASING

102-110 JOHN STREET
 FINANCIAL DISTRICT, NYC | Between Gold and Pearl Streets

RETAIL/QSR FOR LEASE



NEIGHBORS

NOAM AZIZ
 Senior Director
 212.468.5984
 naziz@meridiancapital.com

JOSHUA VILINSKY
 Associate
 212.468.5922
 jvilinsky@meridiancapital.com



MERIDIAN
 RETAIL LEASING

All information supplied is from sources deemed reliable and is furnished subject to errors, omissions, modifications, removal of the listing from sale or lease, and to any listing conditions, including the rates and manner of payment of commissions for particular offerings imposed by Meridian Capital Group. This information may include estimates and projections prepared by Meridian Capital Group with respect to future events, and these future events may or may not actually occur. Such estimates and projections reflect various assumptions concerning anticipated results. While Meridian Capital Group believes these assumptions are reasonable, there can be no assurance that any of these estimates and projections will be correct. Therefore, actual results may vary materially from these estimates and projections. Any square footage dimensions set forth are approximate.