



# The Chambers

Police Street / King's Street

**To Let**

Refurbished Character Workspace

Fitted and Furnished Opportunities Available

*2,506 sq ft*

# The Chambers

*The Chambers* is a stunning landmark Grade II Listed building located in the heart of Manchester on the corner of *King Street* and *Police Street*. The 1st floor has recently been refurbished to provide contemporary workspace and is located on the pedestrian section of King Street close to popular retail and leisure destinations such as *Tast*, *Gails* and *El Gato Negro Tapas*.

Exterior



# The King Street Community

King Street is one of Manchester's most iconic streets, rich in *tradition and heritage* and an exciting location for businesses to prosper. King Street has enjoyed a resurgence and as an occupier of *The Chambers* you will find on your doorstep a range of premium brands as well as diverse mix of food and drink outlets providing a perfect place to relax and socialise after work.

BOODLES

Rapha.

Vivienne Westwood



GAIL's



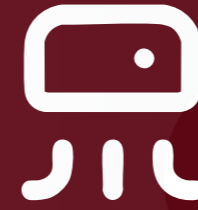
Retailers and restaurants operating on King's Street

# What's on offer

Refurbished character workspace with a corner aspect and great natural daylight. The refurbished workspace contains the following specification:



Entrance



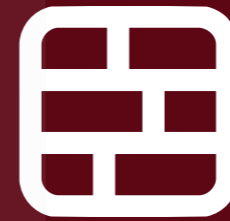
Air Conditioning



Video Intercom System



Shower Facilities



Raised Access Flooring



Fitted Kitchen / Tea Point



WC's and Disabled WC's on each floor



LED Lighting



Open Plan Office Floors

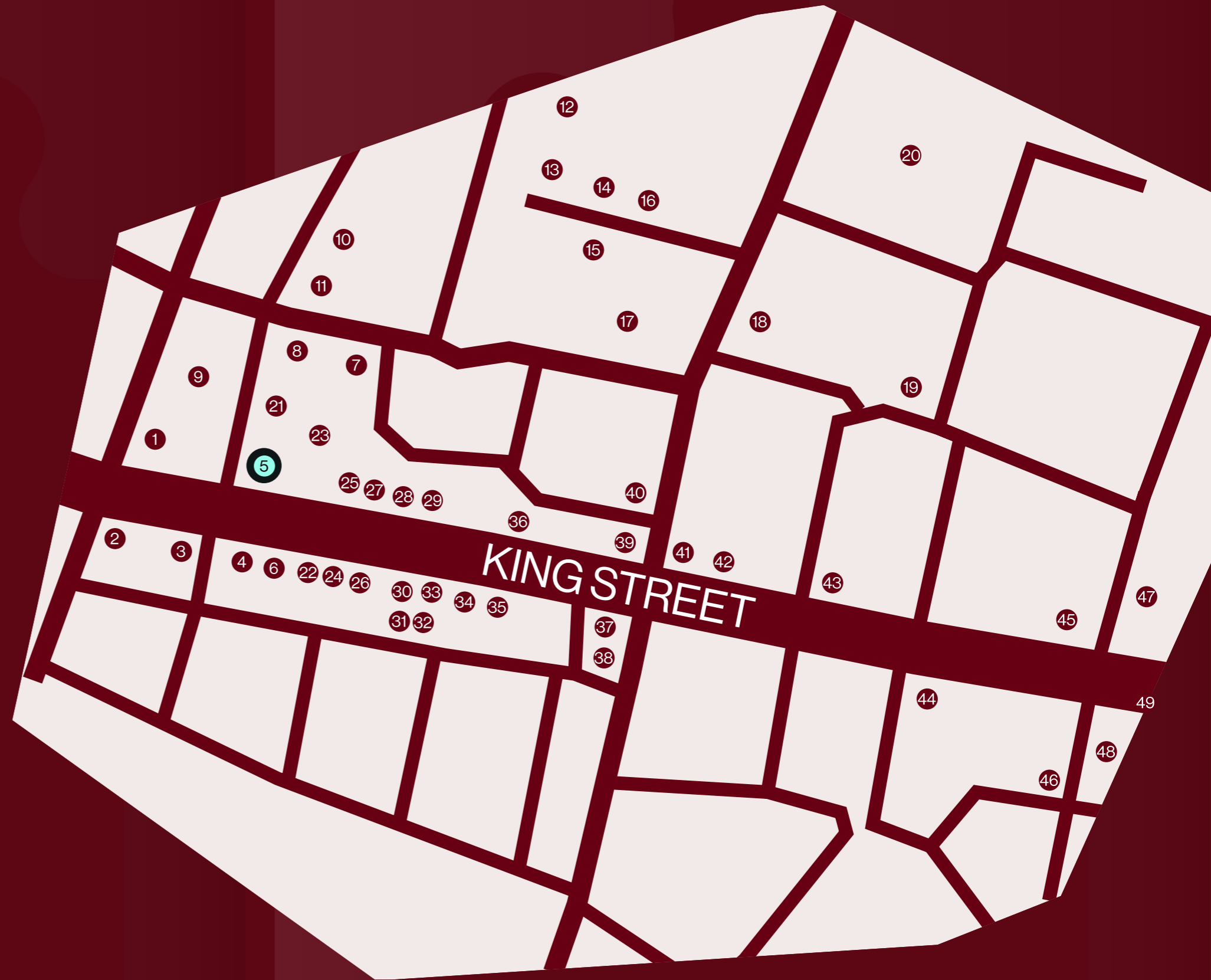


Passenger Lift

# Amenities

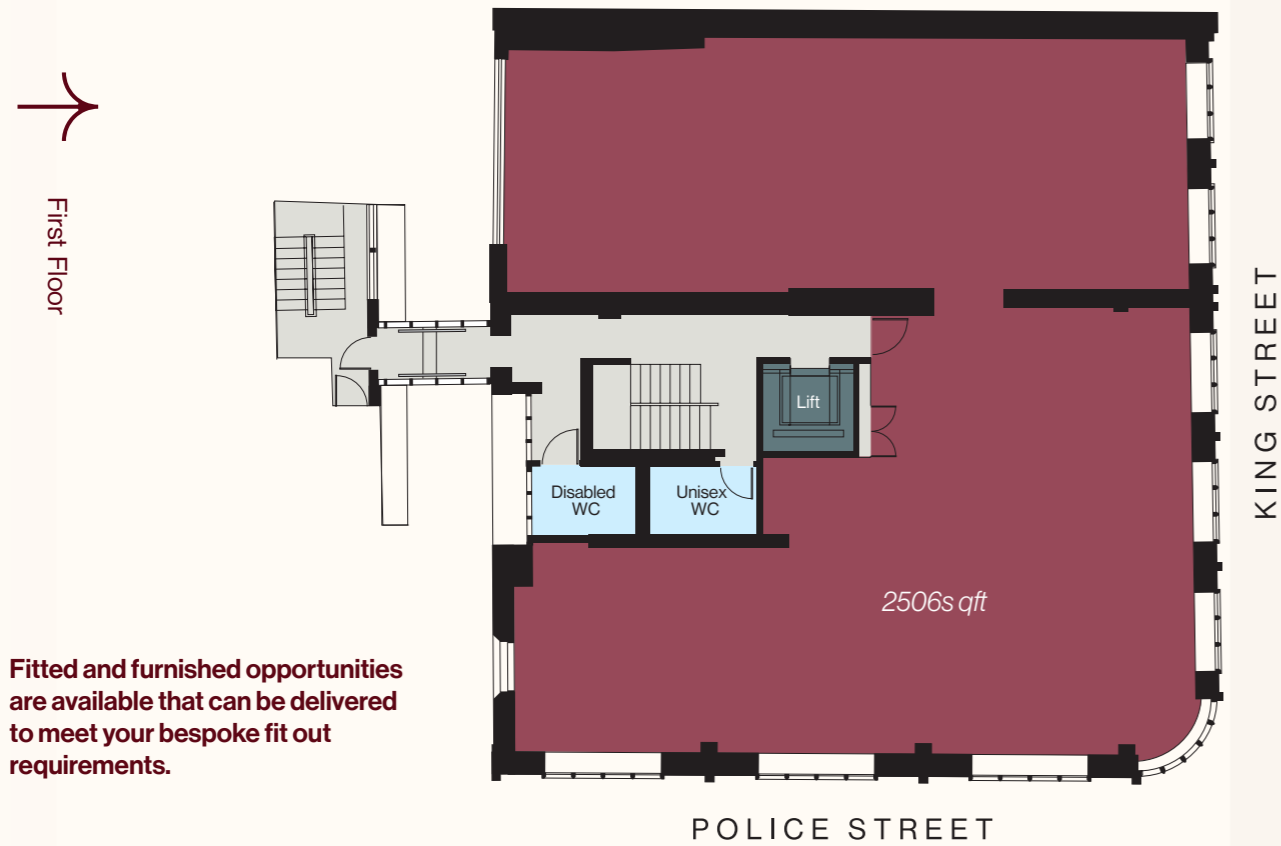
All within a 5 Minute walk.  
The best of Manchester on your doorstep

- |                              |                           |
|------------------------------|---------------------------|
| 1. Hobbs                     | 26. Charles Tyrwhitt      |
| 2. Clarendon Fine Art        | 27. Neal's Yard Remedies  |
| 3. Castle Fine Art           | 28. Hancocks              |
| 4. Gail's                    | 29. Loake                 |
| 5. Boodles                   | 30. Belstaff              |
| 6. Tast                      | 31. Rapha                 |
| 7. Russel&Bromley            | 32. Wood&Company          |
| 8. TAG Heuer                 | 33. El Gato Negro         |
| 9. Waterstones               | 34. Edit Suits Co         |
| 10. Holland&Barrett          | 35. Clarks                |
| 11. David M Robinson / Rolex | 36. Franco Manca          |
| 12. Lululemon                | 37. Blank Street Coffee   |
| 13. Watches of Switzerland   | 38. Knoops                |
| 14. Annie's                  | 39. Patagonia             |
| 15. Sandinista               | 40. Mr Thomas' Chop House |
| 16. Yard's                   | 41. Miller & Carter       |
| 17. Corbieres Bar            | 42. L'Antica              |
| 18. Pret A Manger            | 43. Kala                  |
| 19. Sam's Chophouse          | 44. Pizza Express         |
| 20. Arndale                  | 45. All Bar One           |
| 21. Rockefellas              | 46. Flight Club           |
| 22. Lake Shoes               | 47. Black Cat Club        |
| 23. Austen & Blake           | 48. Lucky Cat             |
| 24. Whistles                 | 49. Vivienne Westwood     |
| 25. The White company        |                           |



# The Workspace

The 1st floor offers 2,506 sq.ft of character workspace that is flexible in its configuration to meet the requirements of modern industry. The corner location of the 1st floor provides excellent natural daylight as well a good aspect with views along King Street.



Fitted and furnished opportunities are available that can be delivered to meet your bespoke fit out requirements.



Office Space with central kitchen



WCs



# Perfectly Situated

King Street is no more than a 10 minute walk from Manchester's key rail links at Manchester Piccadilly, Victoria Train Station and Deansgate Railway Stations. You are also only a short walk from St Peter's Square, which is the central hub of the region wide metro link tram system.



 *The Chambers*

 *Tram*

# LET'S START A CONVERSATION.

**OBI**

**ANDREW COWELL**

acowell@obiproperty.co.uk  
07584 990 976  
0161 237 1717

[www.obiproperty.co.uk](http://www.obiproperty.co.uk)

**AVISON  
YOUNG**

**MATT PICKERSGILL**

Associate Director

mattpickersgill@avisonyoung.com  
07837 032488  
0161 956 4017

[www.avisonyoung.co.uk](http://www.avisonyoung.co.uk)

OBI give notice that these particulars are set out as a general outline only for the guidance of intending Purchasers or Lessees and do not constitute any part of an offer or contract. Details are given without any responsibility and any intending Purchasers, Lessees or Third Party should not rely on them as statements or representations of fact, but must satisfy themselves by inspection or otherwise as to the correctness of each of them. No person employed or engaged by OBI has any authority to make any representation or warranty whatsoever in relation to this Property. These details are believed to be correct at the time of compilation, but may be subsequent amendment. Brochure designed and produced by OBI. November 2022. 0161 237 1717