

110 E 9th St
Los Angeles



CMC

163,955 SF FOR SUBLEASE

CBRE

Space Potential



Sublease term
through 12/31/2029
(Longer term available)



163,955 SF (Divisible)
on 3 Floors



High-end Fully built-out
office, showroom, and
photo studio space



Furniture is available



Where You Take Space



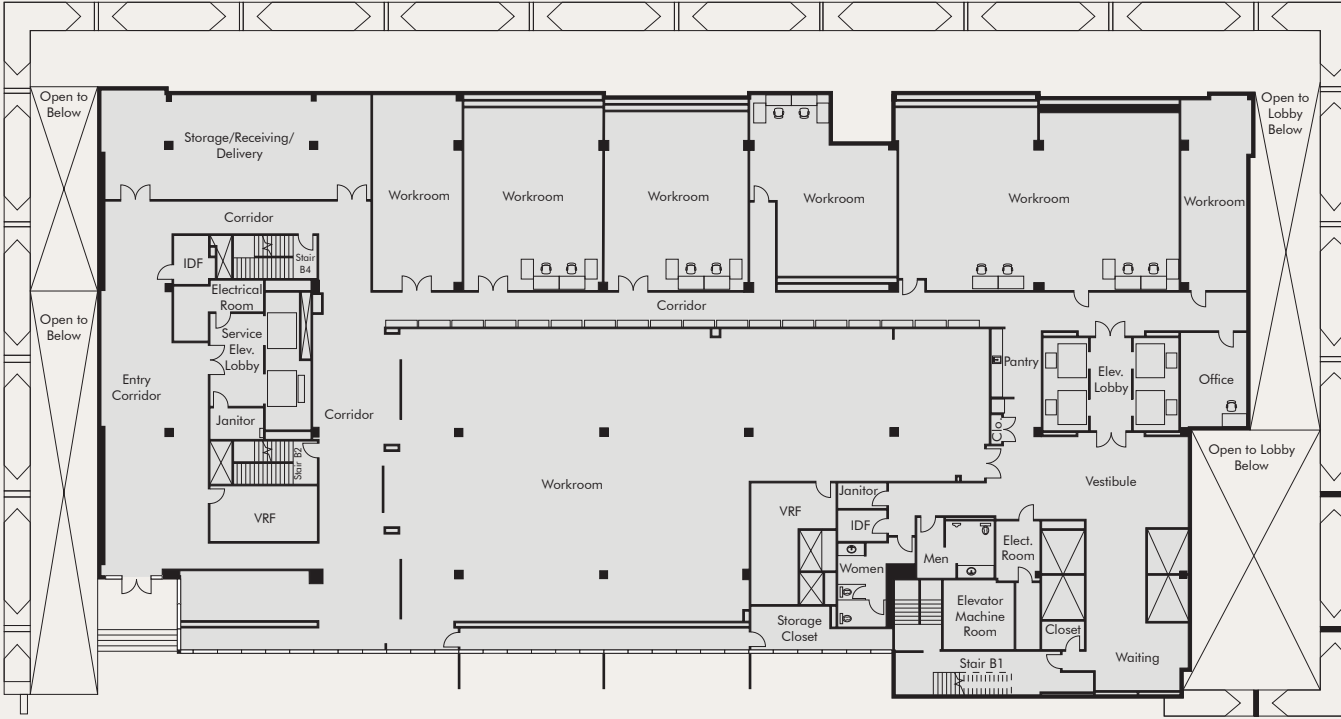
Floor Plan

Photo Studio, Showroom, and Mock Store

16,332
Square Feet

FL

02

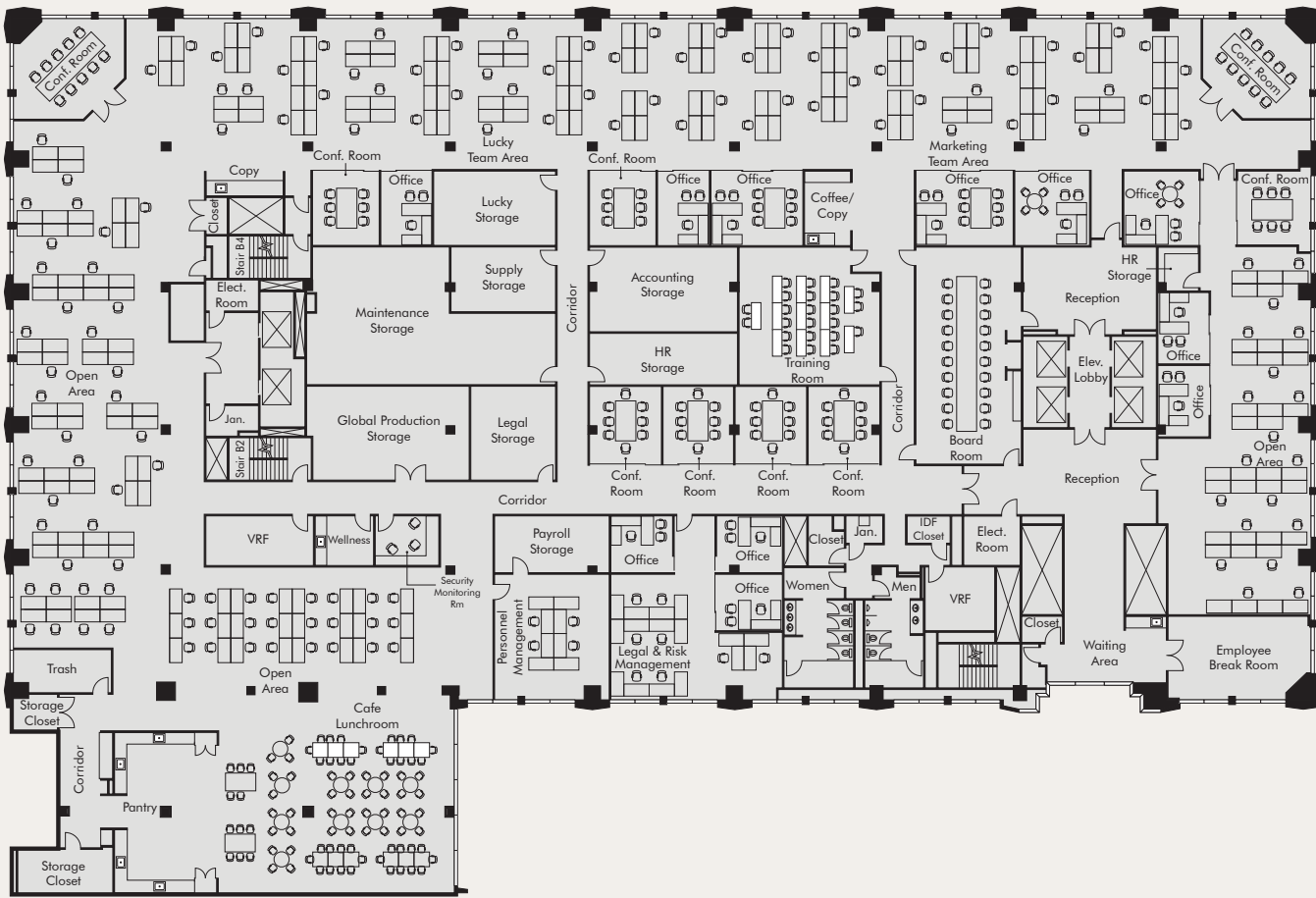


Floor Plan

43,184
Square Feet

FL

04

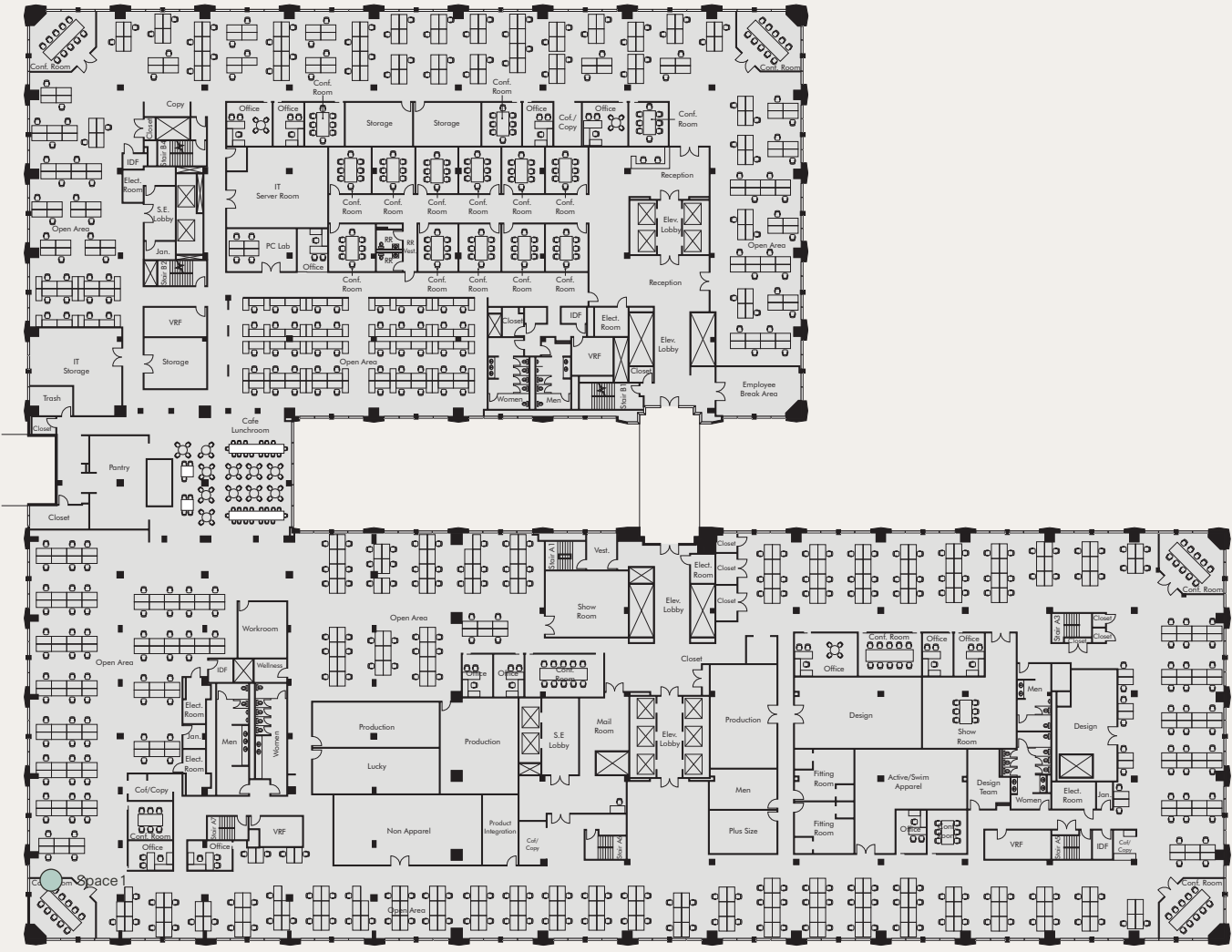


Floor Plan

104,439
Square Feet

FL

05



Where Creativity Takes Space

Experience inspiration and collaboration in a highly improved, fully renovated creative campus





Where Innovation Takes Space

Enjoy 24/7 building access with multiple elevator banks, fostering a secure and healthy work environment thanks to professional on-site management. Benefit from a ground-floor plaza, and tenant rooftop and sky decks. Ample onsite parking, interconnecting sky bridges, and amenity spaces on tenant floors are also available



CALIFORNIA MARKET CENTER

163,955 Square Feet
For Sublease

John Zanetos
Executive Vice President
+1 213 613 3704
john.zanetos@cbre.com
Lic. 01346686

Chris Penrose
Senior Vice President
+1 213 613 3108
chris.penrose@cbre.com
Lic. 01840456

Kelli Snyder
Senior Associate
+1 213 613 3308
kelli.snyder@cbre.com
Lic. 02004355

CBRE

© 2025 CBRE, Inc. All rights reserved. This information has been obtained from sources believed reliable but has not been verified for accuracy or completeness. CBRE, Inc. makes no guarantee, representation or warranty and accepts no responsibility or liability as to the accuracy, completeness, or reliability of the information contained herein. You should conduct a careful, independent investigation of the property and verify all information. Any reliance on this information is solely at your own risk. CBRE and the CBRE logo are service marks of CBRE, Inc. All other marks displayed on this document are the property of their respective owners, and the use of such marks does not imply any affiliation with or endorsement of CBRE. Photos herein are the property of their respective owners. Use of these images without the express written consent of the owner is prohibited.