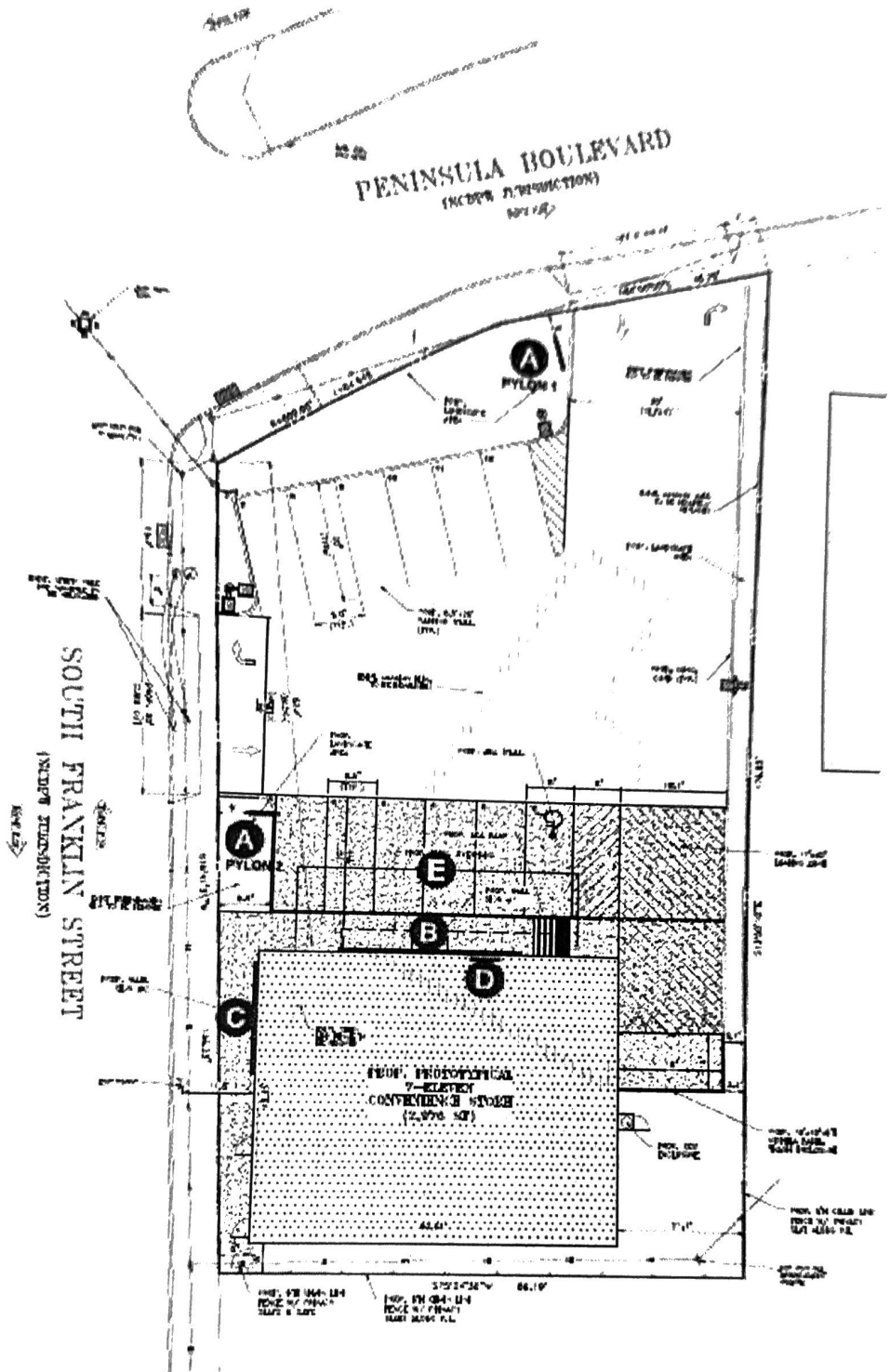
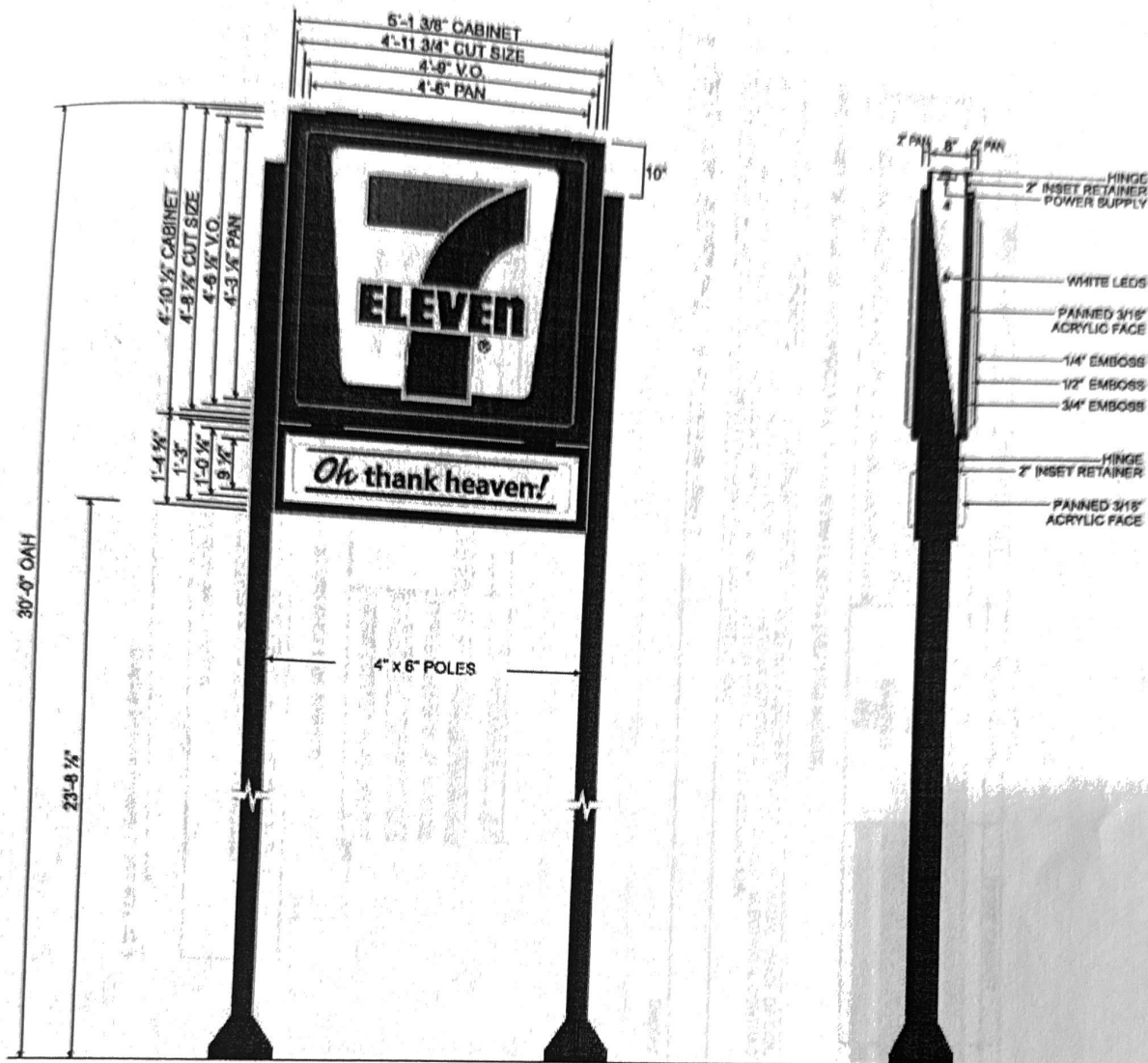


1 | Site Plan
1/32" = 1'-0"



1 | Site Plan
1/32" = 1'-0"



MANUFACTURE & SHIP TWO (2) M25 D/F INTERNALLY ILLUMINATED "MAIN ID" SIGN CABINETS. 3/16" THICK PAN FORMED & EMBOSSSED WHITE ACRYLIC FACES W/ TRANSLUCENT VINYL GRAPHICS APPLIED FIRST SURFACE. 8" DEEP EXTRUDED ALUM. CABINET W/ 2" INSET HINGED RETAINERS TO BE PAINTED DURANODIC BRONZE. CABINET TO BE INTERNALLY ILLUMINATED W/ WHITE LEDS. 2" INSET RETAINERS TO BE HINGED ON ONE SIDE OF CABINET.

MANUFACTURE & SHIP TWO (2) CUSTOM D/F INTERNALLY ILLUMINATED "OTH" SIGN CABINETS. 3/16" THICK PAN FORMED WHITE ACRYLIC FACES W/ TRANSLUCENT VINYL GRAPHICS APPLIED FIRST SURFACE. 8" DEEP EXTRUDED ALUM. CABINET W/ 2" INSET HINGED RETAINERS TO BE PAINTED DURANODIC BRONZE. CABINET TO BE INTERNALLY ILLUMINATED W/ WHITE LEDS. 2" INSET RETAINERS TO BE HINGED ON ONE SIDE OF CABINET.

7-ELEVEN VINYL SPECS: 3M 3630-44 ORANGE, 3M 3630-33 RED, 3M 3630-26 GREEN

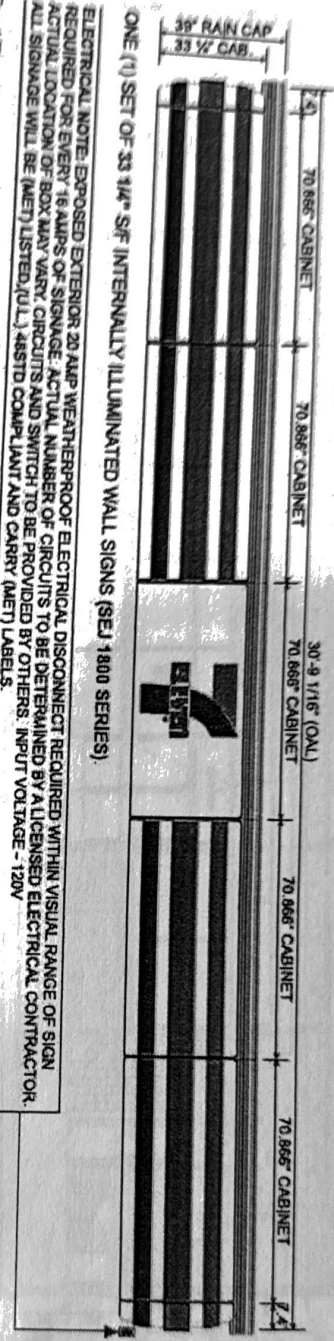
NOTE: TWO (2) PYLON SIGNS TOTAL

7-ELEVEN LOGO DIMENSIONS: OAH: 46" OAL: 44 3/16"	OTH DIMENSIONS: OAH: 10 7/16" OAL: 62 11/16"
---	---

2 Front Elevation & Side Detail - Standard M25 Pylon & Custom OTH Cabinets - Sign A
3/8" = 1'-0"

Display Square Footage (Main ID Cabinets): 24.9
Display Square Footage ("OTH" Cabinets): 7.1
Total (Each Pylon): 32.0

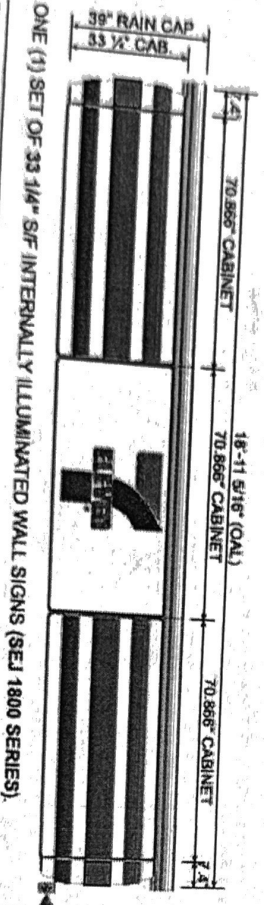
3 Front Elevation - SEJ 1800 Series Wall Sign Cabinets - Sign B
 $\frac{3}{4}'' = 1'-0''$



ONE (1) SET OF 33 1/4" S/F INTERNALLY ILLUMINATED WALL SIGNS (SEJ 1800 SERIES).
 ELECTRICAL NOTE: EXPOSED EXTERIOR 20 AMP WEATHERPROOF ELECTRICAL DISCONNECT REQUIRED WITHIN VISUAL RANGE OF SIGN. REQUIRED FOR EVERY 16 AMPS OF SIGNAGE. ACTUAL NUMBER OF CIRCUITS TO BE DETERMINED BY A LICENSED ELECTRICAL CONTRACTOR. ACTUAL LOCATION OF BOX MAY VARY. INPUT VOLTAGE - 120V. ALL SIGNAGE WILL BE (MET) LISTED (UL), 485TD COMPLIANT AND CARRY (MET) LABELS.

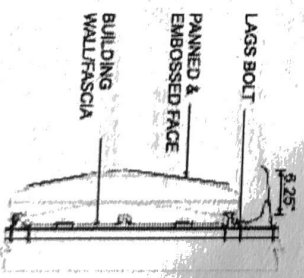
Display Square Footage(Cabinets): 85.3

4 Front Elevation - SEJ 1800 Series Wall Sign Cabinets - Sign C
 $\frac{1}{2}'' = 1'-0''$



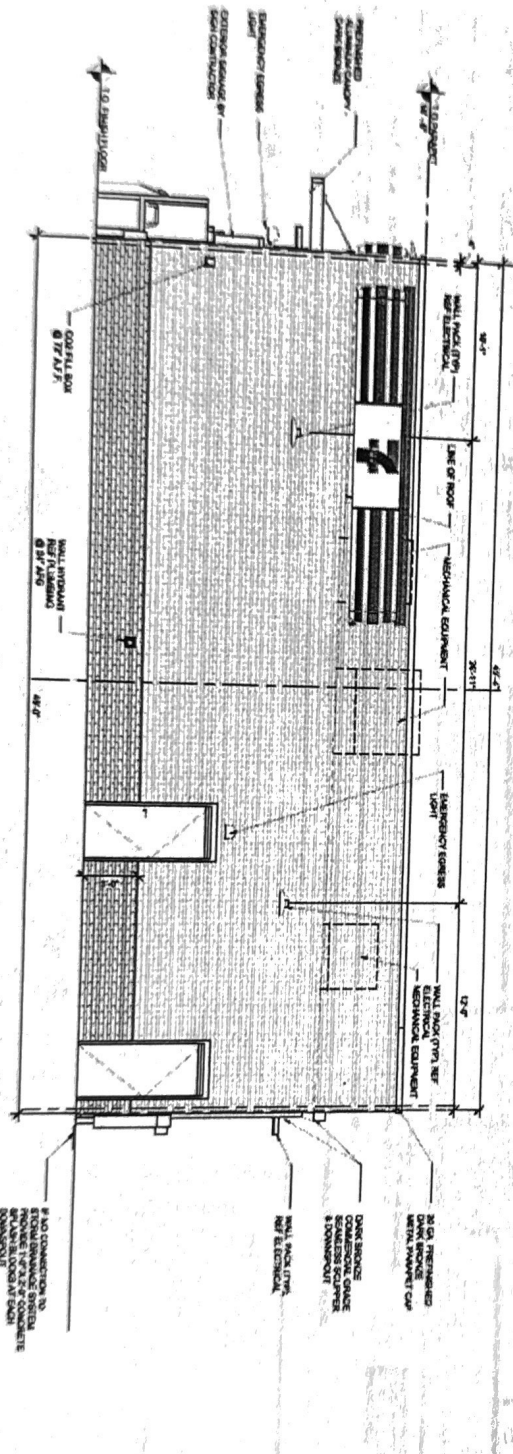
ONE (1) SET OF 33 1/4" S/F INTERNALLY ILLUMINATED WALL SIGNS (SEJ 1800 SERIES).
 ELECTRICAL NOTE: EXPOSED EXTERIOR 20 AMP WEATHERPROOF ELECTRICAL DISCONNECT REQUIRED WITHIN VISUAL RANGE OF SIGN REQUIRED FOR EVERY 16 AMPS OF SIGNAGE. ACTUAL NUMBER OF CIRCUITS TO BE DETERMINED BY A LICENSED ELECTRICAL CONTRACTOR. ACTUAL LOCATION OF BOX MAY VARY. INPUT VOLTAGE - 120V. ALL SIGNAGE WILL BE (MET) LISTED (UL), 485TD COMPLIANT AND CARRY (MET) LABELS.

Display Square Footage(Cabinets): 52.5



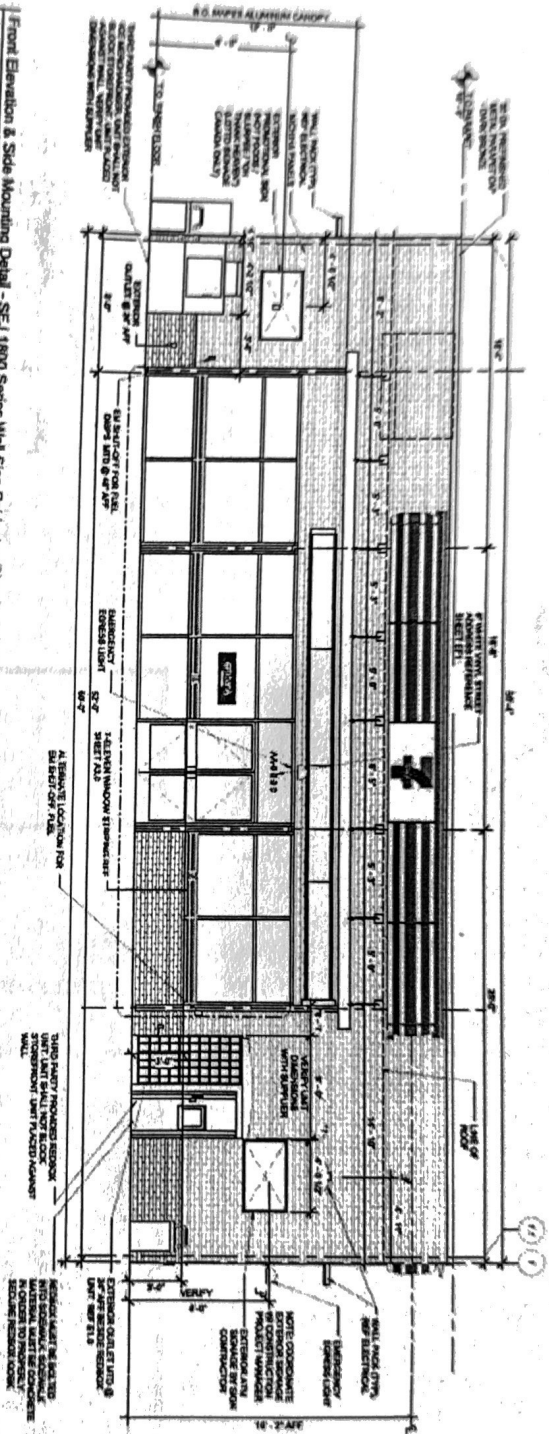
5 Side Mounting Detail - Sign B & C
 NTS
 NOTE: FOR COMPLETE INSTALL INSTRUCTIONS, REFER TO ENCLOSED MANUFACTURERS' DOCUMENTS.

7 Side Elevation & Side Mounting Detail - SEJ 1800 Series Wall Sign Cabinets - Sign C
 $\frac{1}{8"} = 1'-0"$



Display Square Footage: 52.5

6 Front Elevation & Side Mounting Detail - SEJ 1800 Series Wall Sign Cabinets - Sign B, D & E
 $\frac{1}{8"} = 1'-0"$



Display Square Footage: 53.3

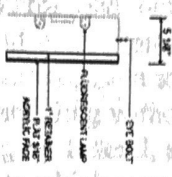


INSTALL ONE (1) STANDARD INTERIOR INTERNALLY ILLUMINATED SELF-HANGING SIGN 3/16" THICK FLAT WHITE ACRYLIC FACE WITH VINYL GRAPHICS APPLIED TO FRONT SURFACE. CABINET TO BE INTERNALLY ILLUMINATED WITH TWO (2) 1" ROUND GRAPHIC LIGHTS. CABINET & LETTERING ALL PAINTED BLACK. SIGN TO HANG INSIDE THE STORE BEHIND GLASS AS INDICATED IN PHOTO OVERLAP WITH EYE BOLTS.

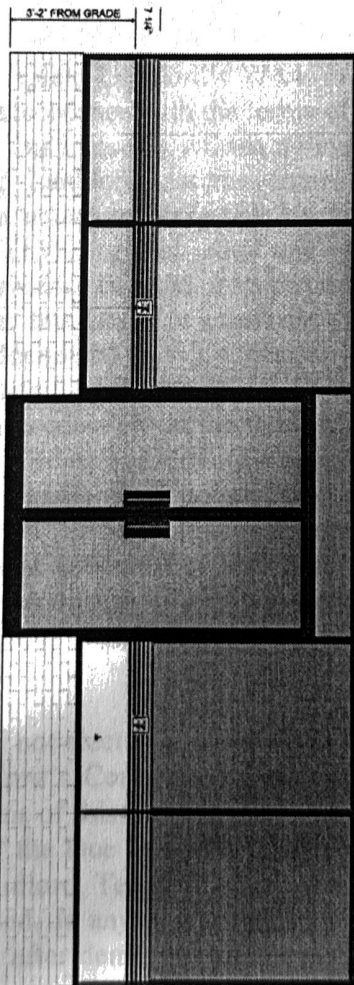
48991 SPEC: 3M 3536-157 BLUE, 3M 3536-153 RED, 3M 3536-126 GREEN

NOTE: ATM WALL SIGN TO BE FABRICATED & PROVIDED BY OTHERS!

NOTE: EXACT INSTALL LOCATION TBD



8 Front Elevation - Side Mounting Detail - Standard Interior ATM Self-Hanging Sign - Sign D
1'-0" x 1'-0" Display Square Footage: 1.2



WINDOW VINYL GRAPHICS TO BE APPLIED SECOND SURFACE ONTO DESIGNATED STORE WINDOWS.

NOTE: WINDOW GRAPHICS KITS TO BE PROVIDED AND INSTALLED BY OTHERS. NOT PART OF HARBINGER'S SCOPE OF WORK.

9 Front Elevation - Typical Window Vinyl Graphics - Sign E
3'-0" x 1'-0"

NO SILVER FRONTING UNDER THE STRIPES EXCEPT TO HIDE EQUIPMENT IN THE SILL/COUNTER AREA WHEN DESIRED.