

COMPASS



129 Duane Street
1250 SF-Ground Floor Retail In The Heart of Tribeca





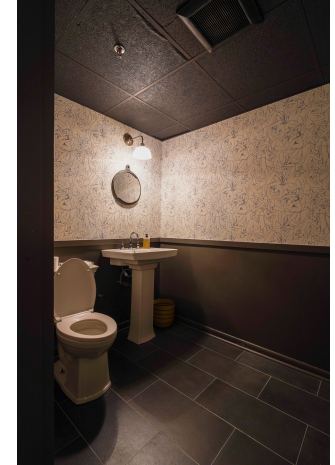
Key Details

1250 sf of A+ Retail on Duane Street
Available For Lease June 1

- Prime Tribeca location
- 15 1/2 foot ceilings
- Excellent frontage and visibility
- Flagpole
- 300 sf of storage
- High pedestrian traffic
- Non vented food uses considered

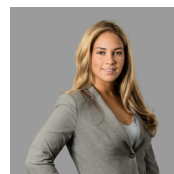
Flexible layout to suit multiple uses
with Amazing Restaurants &
Shopping nearby

Perfect for an Art Gallery, Furniture
Store , Interior Design, Home Goods
and many other uses.



David Graff

Executive Vice President
917.664.1452
david.graff@compass.com



Stephanie Moore

Executive Managing Director
347.824.9872
smoore@compass.com



Catherine O'Toole

Principal
212.961.6252
catherine.otoole@compass.com