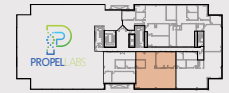
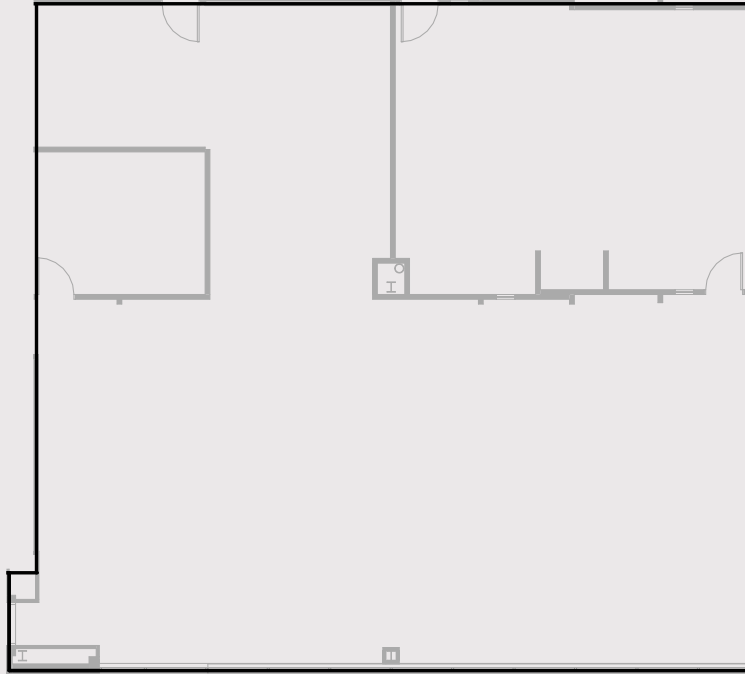


SENECA MEADOWS

CORPORATE CENTER



20501 SENECA MEADOWS PARKWAY | BUILDING 8

Available

3,676 sf

Parking Ratio

3.5 spaces/ 1,000 sf

Column Spacing

30 ft x 30 ft

Ceiling Height

9ft 6in

Features

- Top floor existing office space
- Contiguous to Propel Labs Germantown—perfect opportunity for Lab conversion
- Amenity package in building: conference room, café/lounge, gym/locker rooms
- Walkable to Wegman's and The Shops at Seneca Meadows



Minkoff

Mike Maites | Director of Leasing
mmaites@minkoffdev.com

Ben Wiebusch | Leasing Associate
bwiebusch@minkoffdev.com

240.912.0200 | minkoffdev.com

REAL ESTATE
PERSONAL PERSPECTIVE