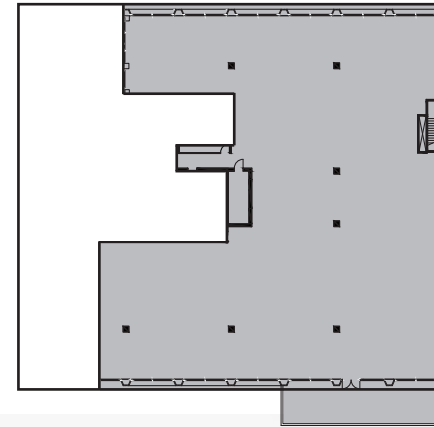
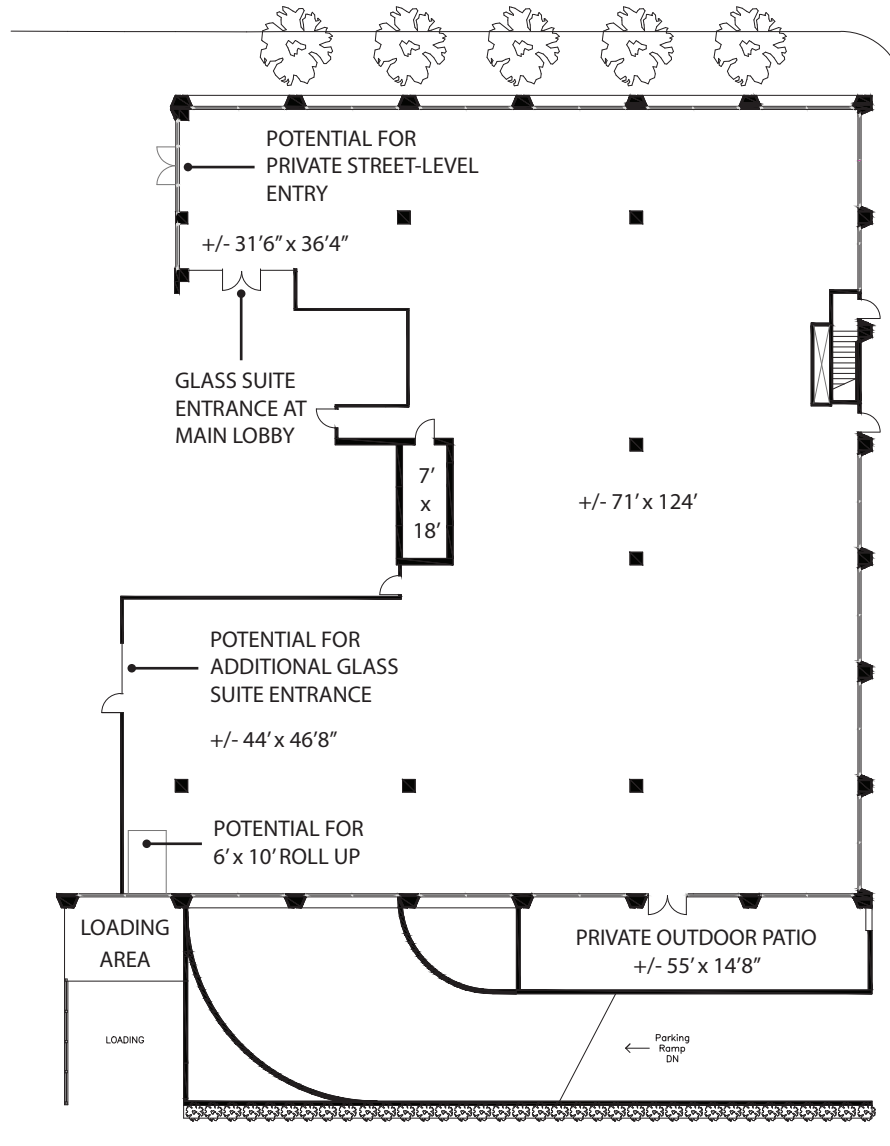


>>> 1ST FLOOR

15,370 RSF (Suite 110)



KEY PLAN

Tradition of Ambition
BUILD YOURS

795 Folsom Street boasts open layouts with towering, exposed ceilings, designed to ignite creativity and foster dynamic collaboration among visionary thinkers.



Soaring 14' Windows on 3 Sides
Prominent Glass Suite Entrance at Main Lobby
Potential for Private Street-Level Suite Entrance

Potential for 6' x 10' Roll-Up Door at Loading Area
Private Outdoor Patio for Exclusive Use
Tall 16' High Ceilings

